

Welsh Wreck Web Research Project (North Cardigan Bay)

On-line research into the wreck of the: *SV Amlwch Packet*



Two Masted Schooner aground

Report compiled by:
Malcolm Whitewright

Report Title:

**Welsh Wreck Web Research Project
(North Cardigan Bay)
On-line research into the wreck of the:
*SV Amlwch Packet***

Compiled by:

Malcolm Whitewright
14 St Brides Road
Little Haven
Haverfordwest
Pembrokeshire
SA62 3UN
Tel: +44 (0)7879814022
E-mail: malcolmwhitewright@hotmail.co.uk

On behalf of:

Nautical Archaeology Society
Fort Cumberland
Fort Cumberland Road
Portsmouth
PO4 9LD
Tel: +44 (0)23 9281 8419
E-mail: nas@nauticalarchaeologysociety.org
Web Site: www.nauticalarchaeologysociety.org

Managed by:

Malvern Archaeological Diving Unit
17 Hornyold Road
Malvern
Worcestershire
WR14 1QQ
Tel: +44 (0)1684 574774
E-mail: MADUdiving@gmail.com
Web Site: www.madu.org.uk

Date:

June 2020

Report Ref:

Leave blank

1.0 Abstract

This project is to discover information relating to the reported wreck of the schooner *SV Amlwch Packet* for which there is a report (MADU Ref. 235) of it having gone aground on 14 October 1881 at Abererch, Caernarfonshire, Wales. The home port was not given (Fig. 1).

The Coflein report gives the *SV Amlwch* wrecked at Abererch on 14 October 1881 and became a total loss.

The objective is to establish the facts relating to the wreck report and discover the circumstances leading up to the grounding and the outcome, together with any other relevant information.

The research is limited to information available on-line as access to libraries and record offices was not possible at this time due to the lockdown for the COVID-19 pandemic.

Figure 1, Extract from MADU data-base

Ships aground at Abererch Oct. 1881

235	14/10/1881	Amlwch Packet	Abererch
236	14/10/1881	Dreadnought	Abererch
237	14/10/1881	Harkaway	Abererch
238	14/10/1881 *	Jane Ellen	Abererch
239	14/10/1881	St George	Abererch

Schooner	tc, ch		1832		235
Schooner	tc, iwj			home port: Barmouth	236
Schooner	tc, ch, iwj			home port: Chester	237
Schooner	tc, iwj	78	1863	* iwj: 04-10-1881/ home port: Porthmadog	238
Brig	tc, ch, iwj				239

2.0 Index

2.1 Table of Contents		Page No.
1.0 Abstract -----		3
2.0 Index -----		4
2.1 Table of Contents		4
2.2 List of Pictures		4
2.3 List of Figures		5
2.4 Contributors		5
2.5 Abbreviations		5
3.0 Introduction -----		6
4.0 Background -----		7
5.0 Research Methodology -----		8
6.0 Results -----		9
7.0 Analysis -----		20
8.0 Conclusions & Recommendations -----		20
9.0 References -----		20
Appendices:		
Appendix A, Specification <i>SV Amlwch Packet</i>.		21
Appendix B, Extracts from the Mercantile Navy Lists showing the <i>SV Amlwch Packet</i>.		22
Appendix C, Extract from Crew List for the <i>SV Amlwch Packet</i>. Voyages and final entry 1881.		26
Appendix D, The Timeline for the <i>SV Amlwch Packet</i>.		30
Appendix E, The storm 14th October 1881, extracts from contemporary newspaper reports.		31
2.2 List of Pictures		Page No.
Front Cover: Two masted schooner aground.		1
Picture 1, The Amlwch Pool.		10

2.3 List of Figures

Page No.

Fig. 1	Extract from MADU Data Base, Ships aground at Abererch Oct. 1881	3
Fig. 2	Extract <i>SV Amlwch Packet</i> from MADU data base.	7
Fig. 3	Extract from R Cadwalader data-base.	7
Fig. 4	Extract from Appropriation book.	10
Fig. 5	Extract from Amlwch historical record.	11
Fig. 6	Extract from Coflein: Treweek yard at Amlwch	12
Fig. 7	Location of Port Nant or Porth y Nant. North coast of Llŷn Peninsular.	13
Fig. 8	Final Voyage from Swansea, Pwllheli (Abererch) and Port Nant	14
Fig. 9	St Tudwals Roads	14
Fig.10	Extract from Coflein record of wreck.	15
Fig.11	WRECK site record (Jan Lettens 2011).	16
Fig.12	Extract from Clip Files, Owners 1863 to 1878	18
Fig.13	Extract from Lloyds Register (Owner Companies) 1883	19
Fig.14	Extract from Crew List archive.	19
Fig.15	Extract from Crewlist: Masters of the <i>SV Amlwch Packet</i> .	20

2.4 Contributors

Thanks to:-

Mr Ian Cundy

Mr Robert Cadwalader

Dr Julian Whitewright, Senior Teaching Fellow, Faculty of Maritime Archaeology, Southampton University

Mr Jack Pink, Southampton University, Maritime Archaeologist.

2.5 Abbreviations

A list of abbreviations some of which used in report, i.e.

GAT	Gwynedd Archaeology Trust
IJNA	International Journal of Nautical Archaeology
MADU	Malvern Archaeological Diving Unit
NAS	Nautical Archaeology Society
NPRN	National Primary Resource Number
OS	Ordnance Survey
RCAHMW	Royal Commission on the Ancient & Historical Monuments of Wales
URL	Uniform Resource Locator

3.0 Introduction

This wreck is listed as one of five vessels driven aground on 14th October 1881 at Abererch. It seemed logical to examine the circumstances of all five and prepare a report for each. I hoped to discover information which would answer the following questions:

- What were the vessel's specifications?
- What historical information is available relating to the vessel?
- What was the story leading up to wrecking?
- What caused the wrecking?
- What has happened since the wrecking?
- Has anyone previously investigated or researched the vessel back story?
- Has anyone dived, recorded, surveyed or worked on the site?
- Has any salvage, etc. been carried out?
- Have there been any previous reports produced relating to the vessel?

5.0 Research Methodology

The following were used in this research:-

Acer Laptop with fast fibre wireless internet connection, I-phone.

Search engines used were

Google Chrome

AVG Secure Browser

Microsoft Office

Windows 10

Snip & Sketch

Methodology: first step to check out Coflein, report on wreck at Abererch.

Then Lloyds Register. Amlwch ship building and Anglesey archive. Newspaper records. Crewlist.

List of sources,

Coflein: <https://www.coflein.gov.uk/en/site/search> record of the beaching (Abererch).

Lloyds Register of shipping: <https://hec.lrfoundation.org.uk/archive-library/lloyds-register-of-ships-online> -

Lloyds Register, usually a good starting point. But in this instance because the vessel was under 50 Tons on early classification it was not listed in the Lloyds Register. Also records missing for some of the crucial years

Library of Wales: <https://newspapers.library.wales/view/3310679/3310687/68/> - excellent for local news reports on the storm and beaching.

[The Cambrian News and Merionethshire Standard Archive](#) - good source.

<http://www.maritimearchives.co.uk/> - good to identify ships and for crew lists

Crew lists and other documents: <http://www.crewlist.org.uk/about/findingoncrewlists> - Very good for this vessel

<http://shipbuildinghistory.com/shipyards/emergencylarge/foundation.htm>

https://content.libraries.wsu.edu/digital/collection/cchm_photo/id/6983/

<https://www.wrecksite.eu/wreck.aspx?33705>

<https://www.crewlist.org.uk/data/vesselsalpha?>

<https://web.archive.org/web/20070425234855/http://freespace.virgin.net:80/r.cadwalader/maritime/lifeboat/wreck.htm>

<https://southampton.spydus.co.uk/cgi-bin/spydus.exe/FULL/WPAC/BIBENQ/>

<http://amlwchhistory.co.uk/ship-building/> ships built at Amlwch and history of port

6.0 Results

- **Build and specification of the *SV Amlwch Packet*,**

From the Official Number Appropriation record (Fig 4), the vessel is listed as the Official Number 1545, Amlwch Packet, 27 Ton, Sailing Ship, Port of Registration Beaumaris, Date of Registration 2nd December 1847. See Appendix A.

Figure 4, Extract from Official Number Appropriation List.

Appropriation Books, Official Numbers 1501 - 1550 (1545) Image source [clip](#) CLIP images

Official Number.	Name of Ship.	Tonnage.	Whether Steam or Sailing Ship.	Port of Registry.	Date of Registry.	Occasion of Appropriation.	Date of Appropriation.
1501							1855
1544	Conservative	62		Liverpool	19 th Nov 1856		
1545	Amlwch Packet	27		Beaumaris	2 nd Dec 1847		
1546	Margaret	115		Liverpool	14 th Mar 1856		

Both the MADU and Cadwalader data bases have the *SV Amlwch Packet* built at Amlwch in 1832. (Figs. 2&3)

The Appropriation record May 5th 1855, has the vessel at 27 Tons, as does the early Mercantile Navy listings. The Amlwch Record of vessels built has the vessel at 35 Tons (Fig. 6). Crewlist have it at 54 or 55 Tons Net. Aled Eames (Ventures in Sail 1878) has it at 55Tons. The vessel is not listed in the Lloyds Register for the period because it was rated under 50 Tons. Later under the Lloyds new classification it was rated 55 Tons and appears in the Mercantile Navy list as such in 1867. The relevant Lloyds lists are not available from 1874 and the vessel is not recorded in the Registers from 1832 to 1874.

The Mercantile Navy list records are in Appendix

I have been unable to discover any dimensional information on the *SV Amlwch Packet*, or any photographs, drawings or contemporary descriptions. My guess is that it was a two masted (main and foremast) schooner, single deck but, as a 'Packet', may have had accommodation cabin for a small number of passengers. The typical dimensions for this type of vessel would be length 65ft, Beam 16ft and depth 8ft.

- **Historical information relating to the *SV Amlwch Packet*,**

The schooner was in use for approximately 49 years and appears to have had a remarkably uneventful career. I found no reference to this vessel in the newspaper archives. Ivor Wynne Jones lists it in his index but it is not shown in the Abererch list on his shipwreck map (P. 27).

The Schooner was built at the Nicholas Treweek Yard at Amlwch (Fig. 5). It was owned and operated by Nicholas Treweek and then Treweek, Son & Co, until Dec 1873. Sailing Packets were progressively replaced with steam powered vessels from 1850. The vessel although built in 1832 was not registered with an official number until 1847 (15 years on). It is possible that this is when it entered cargo service and ceased to be a Packet. Thomas H Jones of 3 Mountain Place, Bangor became owner on 1st January 1876. It is recorded in Crewlist as being owned by Captain Wm Williams of Abererch Road, Pwllheli for six months from 1st January 1878. He was also the Master and continued to be Master, when ownership went to GH Jones of Bangor, on 1st July 1878.

Figure 5, Extract from Amlwch historical record.

Vessels built in Amlwch

Built	Name	Tones	By	Rig	Brought	Owned by	Master/Fate/Notes
1832	Amlwch Packet	37	Treweek Bros	Smack/schooner?	1832	N.Treweek... T.Jones of Bangor	Capt Griffith Jones. Wrecked Abererch 14th October 1881

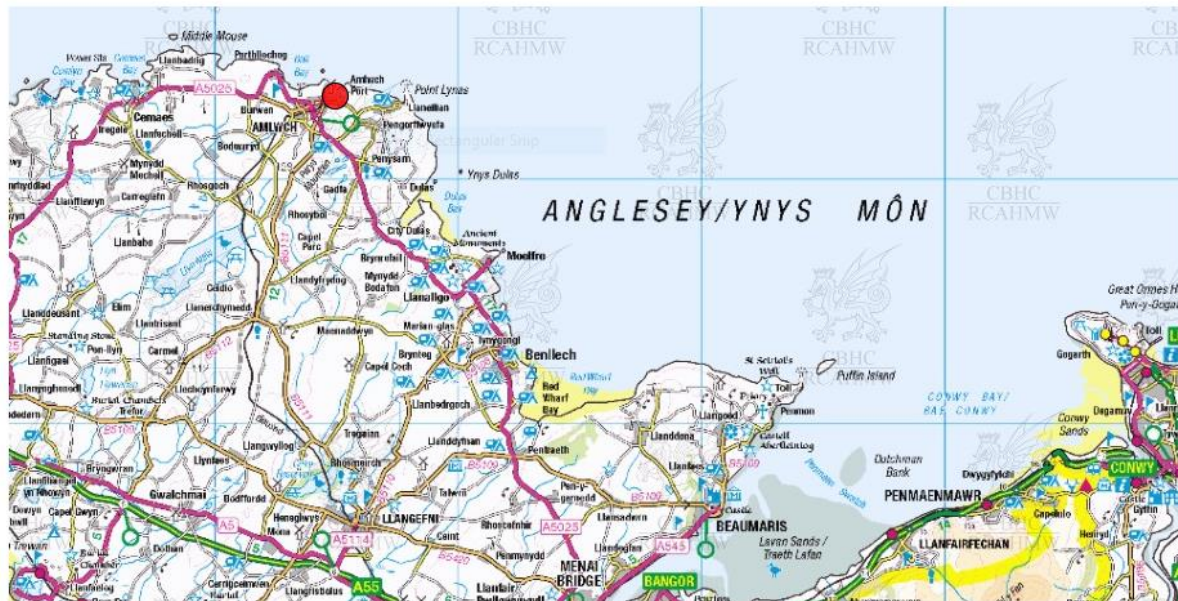
Picture 2, The Amlwch Pool.



The Amlwch ship yards of Nicholas Treweek (Fig. 5) and William Thomas produced many vessels in the C19th. The business started with the repair of sailing vessels such as the Hero but later built both wooden and then steel sailing and steam ships.

Figure 6, Extract from Coflein: Treweek yard at Amlwch

Location, North East Anglesey.



© Copyright and database right 2020. All rights reserved. Ordnance Survey licence number 0100022206

Nicholas Treweek's shipyard is the first recorded at Amlwch and in part utilised a quay which may date back to the first copper exports during the reign of Elizabeth I. Small amounts of shipbuilding activity had taken place on the western side of the harbour prior to 1825. Nicholas Treweek established a yard employing 32 men when he was commissioned by his father James (who was the Agent for the Mona Mine Co.) to build a 68nt sloop called the *UNITY* in 1825. The yard continued in his name until business was transferred to a new dry dock in 1858 (NPRN 41246) and became by 1866 'Treweek & Sons Co.'

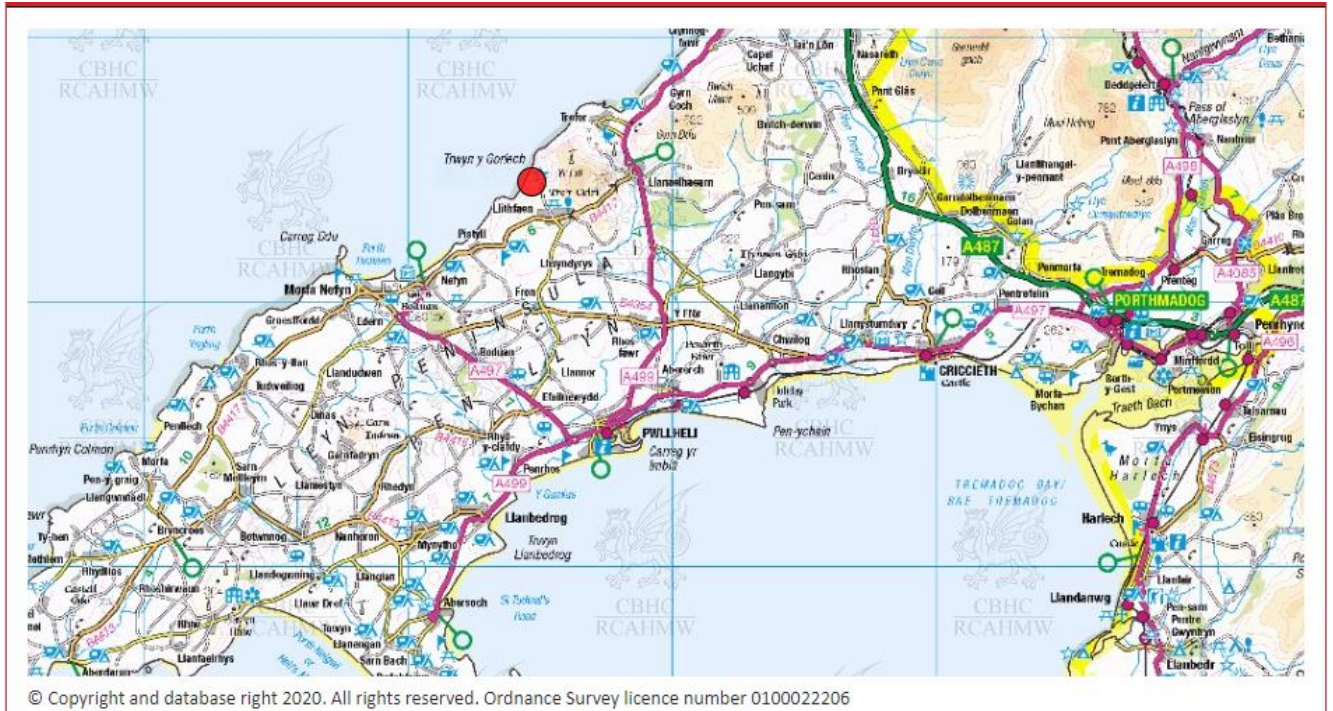
- **Lead up to wrecking,**

The *SV Amlwch Packet* was on passage from Swansea, Bristol Channel to Port Nant carrying coal. The Master was Captain Wm. Williams (since June 1876). Porth y Nant, located near the village of Lithfaen on the northern coast of the Llŷn Peninsula, Gwynedd, in northwest Wales (Fig 6). The quarry named Nant Gwrtheyrn opened in 1861, and was serviced by a village called Porth y Nant, on the site of the current language centre. Nant Gwrtheyrn produced setts used for road surfacing. The community lived an isolated existence, with product shipped and goods shipped out mainly via the Irish Sea.

A particularly violent storm (see Appendix F) was travelling west across the Atlantic crossing Ireland on the 13th October and the west coast of Wales. The storm's intensity was greatest on the 14th southerly to south westerly as it passed. This storm became famous for the destruction of a great part of the Eyemouth fishing fleet with great loss of life there. It is possible that the Master had observed a storm warning when passing a signal station or just his experience and seamanship motivated him to seek shelter which caused him to seek shelter at the 'safe' anchorage on the south side of the Llŷn peninsular at St. Tudwal's Roads. Coastal storm warnings had been developed and instituted by Admiral Robert Fitzroy at his newly established Meteorology Department in London. But after his suicide in 1865 the forecasts were suspended in 1866, subsequently to be re-instated in 1879, after much lobbying from shipping companies and fishermen.

St. Tudwal's roads was recognised and much used, by vessels of the period, to seek shelter from westerly gales and considered a safe and secure anchorage by virtue of the clay sea bed. Indeed there were several other vessels there also – most of the ships with both anchors (port & starboard) deployed.

Figure 7, Location of Port Nant or Porth y Nant. North coast of Llŷn Peninsular.



- **The wrecking,**

Hurricane force winds blew up during the night of 13th/14th such that at approximately 6 a.m. both anchor cables parted and the schooner was driven ashore onto Abererch beach one mile east of Pwllheli (Fig. 7). The crew were all saved by means of ropes attached from the shore to the rigging. Several other ships were driven ashore on the same beach (see figure 2. MADU list). Although the tides were neap the seas were tremendous and 'all will sustain heavy damage' it was observed. The waves were sweeping over the vessels and pounding them on the beach. The wind was such that railway carriages were blown over from the rail track and seas crashed over the harbour wall at Pwllheli. – see Appendix F.

Figure 8, Final Voyage from Swansea (Bristol Channel), Pwllheli (Abererch) and Port Nant .



© Copyright and database right 2020. All rights reserved. Ordnance Survey licence number 0100022206

- **Cause of the wrecking and background information,**

The Master, in caution, decided to shelter in St Tudwals Roads (Fig.8) from the impending hurricane force storm (Appendix D). It seems that all five vessels there, although their anchors were holding, the anchor cables parted leaving them helpless with the inevitable beaching at Abererch.

Although it was a beach grounding the seas were such as to cause damage. Other reports indicate that only the SV Dreadnought was actually a wreck. However the SV Amlwch Packet was now 49 years old and I believe the Owner decided to scrap the damaged vessel possibly at Pwllheli. Coflein records it as wrecked there (Fig 9).

Figure 9, St Tudwals Roads

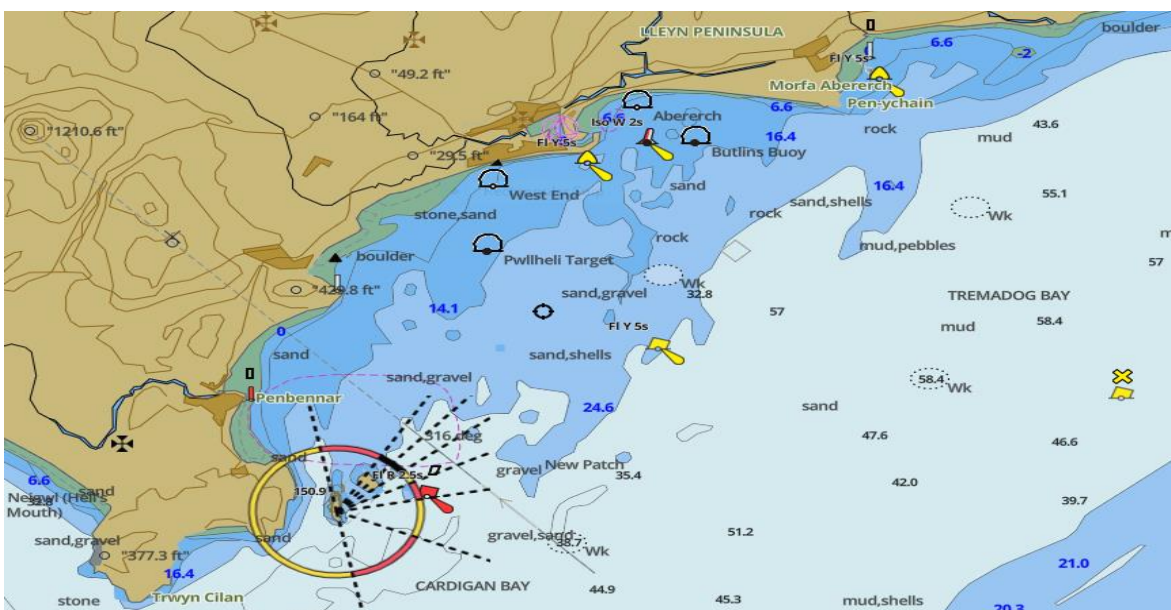


Figure 10, Extract from Coflein Record of wrecking.



Coflein

AMLWCH PACKET

Site Details



© Copyright and database right 2020. All rights reserved. Ordnance Survey licence number 0100022206

NPRN 240609

Site Description Archaeological remains associated with the loss of this vessel are not confirmed as present at this location, but may be in the vicinity.

Map Reference SH33NE

Grid Reference SH3942935900

Event and Historical Information:

Unitary (Local) Authority Maritime

The AMLWCH PACKET was a wooden schooner belonging to the port of Beaumaris. The schooner was wrecked at Abererch on 14 October 1881.

Old County Maritime

Community Maritime

Sources include:

Wynne-Jones, I, 2001, Shipwrecks of North Wales, 4 ed, p152

Type of Site WRECK

Maritime Officer, RCAHMW, June 2010.

Broad Class MARITIME

Period Post Medieval

Figure 11, WRECK site record (Jan Lettens 2011).

www.wrecksite.eu

EN Log In

home
wrecks
charts
people
references
other
interactive

SV Amlwch Packet (+1881)

> DOWNLOAD

Details

general

nationality: [british](#)

purpose: [transport](#)

type: [schooner](#)

propulsion: [sailing ship](#)

date built: [1832](#)

details

about the loss

cause lost: [ran aground \(wrecked\)](#)

date lost: [14/10/1881](#) [dd/mm/yyyy]

about people

owner: [Jones T., Bangor \(UK\)](#)

captain: [Jones, Griffith](#)

about the wreck

references

updates

entered by: [Jan Lettens](#)

entered: [19/12/2011](#)

Pictures Rectangular Snip

[Jan Lettens](#) 25/05/2011

This is a thumbnail version of the chart [Cardigan Bay - Northern Part](#). You do not have sufficient rights to see this chart in full resolution [11573x7444 pixels]. Have access to this chart (and more charts) via one of the following services

Advertisement

advertise

access to maps & positions

You may consider access to

- [British Isles Hydrographic Service](#)
+ 591 maritime charts and wrecks shown on charts
+ 167,460 wreck positions worldwide
- [France Hydrographic Service](#)
+ 130 maritime charts and wrecks shown on charts
+ 139,100 wreck positions worldwide
- [All Hydrographic Services](#)

Search

search wreck

name starts with

show prev. names

[search](#)

search chart

[chart catalogue](#)

search owner/builder

Position

[Jan Lettens](#) 20/12/2011

latitude: [hydro member](#)

longitude: [hydro member](#)

remarks: [Alternative position 'Abererch beach'](#)

AIS: [hydro member](#)

mark [add position to my marks \(+/-5miles\)](#)

dist. homeport: [dist. homeport](#)

position disp.: ▼

show neighbour wrecks: [members only](#)

History

[Jan Lettens](#) 19/12/2011

On October 14th, 1881, the British schooner AMLWCH PACKET (Capt. Griffith Jones), built in 1832 at Amlwch and owned by Jones T., Bangor, was wrecked, off Abererch, Wales.

People on board

Documents

[Jan Lettens](#) 26/01/2017 [EN]

[Sailing ships - types of rigs](#)

ref. used: [Lettens Jan & Tierney Bren](#)

The Wreck today

Movies

- **Since the wrecking** the ship was sold and dismantled, possibly at Pwllheli.
- **Previous investigation or research of this vessel,**
The only previously documented information is that which is contained in the data bases.
- **The Site,**
As an aground wreck site there is nothing to record by diving or surveying at the site.
- **Additional Information,**
With research limited to on-line at the present time I have not been able to discover a copy of the builder's original plans or any photographs, drawings, sketches, paintings, pictures etc.
- **Events encountered during the vessel's lifetime,**
None discovered. See Timeline at Appendix E.
- **Passengers and crew,**
The *SV Amlwch Packet* although a small schooner may have some provision for a few passengers when operating as a Mail Packet. Subsequently carrying coastal cargoes (Coal, Wood, Copper) it would not have.
Crew, whilst operated as a Mail Packet the regular crew seems to have been Master, Mate and one Seaman. See also Appendix C.

Crew List 1863, (Extract from Clip Files)

Ship details

Vessel	AMLWCH PACKET	Dates	1/7/1863 to 31/12/1863
Official number	1545	List type	List D
Ownership	TREWEEK SONS & CO	Registered	BEAUMARIS, 14/1862
	AMLWCH PORT	Tonnage	55 net
Master	WILLIAM OWEN	Archives	Anglesey Archives
	AMLWCH	Archives reference	W/DB/32

Crew names

Forename	Surname	Age/DOB	Birthplace	Capacity	Previous vessel
WILLIAM	OWEN	50	AMLWCH, ANGLESEA	MASTER	THIS VESSEL
ROBERT	LONG	48	AMLWCH, ANGLESEA	MATE	THIS VESSEL
JAMES	HUGHS	32	AMLWCH, ANGLESEA	SEAMAN	THIS VESSEL

Crew list 1878 (Extract from Clip files)

Vessel	AMLWCH PACKET	Dates	1/1/1878 to 30/6/1878
Official number	1545	List type	List D
Ownership	WM WILLIAMS	Registered	BEAUMARIS, 14/1862
	ABERBERCH ROAD	Tonnage	54 net
Master	WM WILLIAMS	Archives	Anglesey Archives
	ABERBERCH ROAD	Archives reference	W/DB/32
	PWLLHELI		

Crew names

Forename	Surname	Age/DOB	Birthplace	Capacity	Previous vessel
WILLIAM	WILLIAMS	48	PWLLHELI	MASTER	AMLWCH PACKET, BEAUMARIS, 1877
OWEN	JONES	33	PWLLHELI	MATE	AMLWCH PACKET, BEAUMARIS, 1877
RICHARD	OWENS	18	PORTDINORWIC	AB	AMLWCH PACKET, BEAUMARIS, 1877
THOMAS	ROBERTS	28	MENAI BRIDGE	MATE	BESSIE ANNE, CARNARVN, 1878
BENJAMIN	WILLIAMS	18	ANGLESEA	AB	ANNIE, LPOOL, 1878
JOHN	ROBERTS	23	HOLYHEAD	MATE	DISPATCH, MILFORD, 1878
ROBERT	WYNNE	17	AMLWCH	AB	ANNIE LLOYD, CARNARVON, 1878

- **Owners and Masters,**

The owners of the *SV Amlwch Packet* 1863 to 1878 are listed at Figure 9, At the wrecking in 1881 the owner was GH Jones, possibly part of T Jones & Co, Port Penrhyn, Bangor, Carnarvon (Fig. 11) and the Master was Captain Wm Williams also of Bangor.

Figure 12, Extract from Clip Files, Owners 1863 to 1878



Owners of the ship with official number 1545

Surname	Forename	Address	Ship's name	Port	From	To	Archive	Reference	Links
TREWEEK SONS & CO		AMLWCH PORT	AMLWCH PACKET	BEAUMARIS, 14/1862	1/1/1863	30/6/1863	Anglesey RO	WDB/32	Transcript
		AMLWCH PORT	AMLWCH PACKET	BEAUMARIS, 14/1862	1/7/1863	31/12/1863	Anglesey RO	WDB/32	Transcript
TREWEEK	N	AMLWCH	AMLWCH PACKET	BEAUMARIS, 14/1862	1/1/1866	30/6/1866	Anglesey RO	WDB/32	Transcript
TREWEEK SONS & CO		AMLWCH PORT	AMLWCH PACKET	BEAUMARIS, 14/1862	1/7/1866	31/12/1866	Anglesey RO	WDB/32	Transcript
TREWICK	N	AMLWCH	AMLWCH PACKET	BEAUMARIS, 14/1862	1/1/1868	30/6/1868	Anglesey RO	WDB/32	Transcript
TREWEEK SONS & CO		AMLWCH PORT	AMLWCH PACKET	BEAUMARIS, 14/1862	1/7/1868	31/12/1868	Anglesey RO	WDB/32	Transcript
TREWEEK	N	AMLWCH	AMLWCH PACKET	BEAUMARIS, 14/1862	1/7/1869	31/12/1869	Anglesey RO	WDB/32	Transcript
		AMLWCH	AMLWCH PACKET	BEAUMARIS, 14/1862	1/1/1870	30/6/1870	Anglesey RO	WDB/32	Transcript
TREWEEK SONS & CO		AMLWCH PORT	AMLWCH PACKET	BEAUMARIS, 14/1862	1/7/1870	31/12/1870	Anglesey RO	WDB/32	Transcript
TREWICK	NICHOLAS	AMLWCH	AMLWCH PACKET	BEAUMARIS, 14/1862	1/1/1873	30/6/1873	Anglesey RO	WDB/32	Transcript
TREWEEK	N	AMLWCH	AMLWCH PACKET	BEAUMARIS, 14/1862	1/7/1873	31/12/1873	Anglesey RO	WDB/32	Transcript
JONES	THOS H	BEAUMARIS	AMLWCH PACKET	BEAUMARIS, 14/1862	1/1/1876	30/6/1876	Anglesey RO	WDB/32	Transcript
JONES	THOMAS	BANGOR	AMLWCH PACKET	BEAUMARIS, 14/1862	1/7/1876	31/12/1876	Anglesey RO	WDB/32	Transcript
WILLIAMS	WM	ABERBERCH ROAD, PWLLHELI	AMLWCH PACKET	BEAUMARIS, 14/1862	1/1/1878	30/6/1878	Anglesey RO	WDB/32	Transcript
JONES	G H	BANGOR	AMLWCH PACKET	BEAUMARIS, 14/1862	1/7/1878	31/12/1878	Anglesey RO	WDB/32	Transcript

Figure 13, Extract from Lloyds Register (Owner Companies) 1883

RECORDED IN THE REGISTER BOOK. 45

<p>Jones, Edward, 4, High Street, Portmadoc. Reg. Tons w. Catharine & Margaret 91</p> <p>Jones, Edward, Aberystwith. w. Ann Jones 92 w. Native 85</p> <p>Jones, Edward J., 2, Queen's Road, Aberystwith. w. Clarissa 96 w. Fanny Pothergill 180 w. Hope 287 w. Volunteer 65</p> <p>Jones, Mrs. Elizabeth, Port Dinorwic, co. Carnarvon. w. Pursuit 89</p> <p>Jones, Evan, & Co., Peabody Buildings, Cardiff. w. Caroline Spooner 663 w. Glaslyn 763 w. Headly 92 w. Satellite 487 i.s. South Wales 891</p> <p>Jones, Evan, & Co., Portmadoc. w. Hannah & Jane 92</p> <p>Jones, H., Portmadoc. w. David Sinclair 122</p> <p>Jones, Hugh, Tany-park, Maefo, Nevin, Carnarvon. w. Ann & Ellen 110</p>	<p>Jones, John, 3, Brook Row, Bangor, Carnarvon. Reg. Tons w. Confidence 75</p> <p>Jones, John, i.s. Lindsay 719</p> <p>Jones, John, Fynonwa, Penbryn, co. Cardigan. w. Leander 72</p> <p>Jones, John, Llanigon, Carnarvonshire. w. Industry 84</p> <p>Jones, John, Llota, C.M.I. w. Prince Hassan 400</p> <p>Jones, John, Carnarvon. w. Martha 98</p> <p>Jones, John, & Co., Llanystudyg, Carnarvonshire. w. Janet 129</p> <p>Jones, John, & Co., Folow's Place, Aberystwith. w. Madona 163</p> <p>Jones, John, & Co., Garth Cottage, Portmadoc. w. C. E. Spooner 172 w. John Evans 127 w. Mary Claasen 182</p> <p>Jones, John, & Co.,</p>	<p>Jones, Lewis, & Co., Aberystwith. Reg. Tons w. Gronsa 159</p> <p>Jones, Mrs. M., Llanfihangel-y-druckan, Merioneth. w. Theda 150</p> <p>Jones, Morgan, & Co., 94, High Street, Portmadoc. w. Ann Jones 85 w. Cuero 230 w. Killia Lass 185 w. Mary Watkins 169</p> <p>Jones, Morris, & Co., 25, Lombard Street, Portmadoc. w. Edward Windus 156 w. Ellen Greaves 254 w. Jannett & Jane 81</p> <p>Jones, O., & Co., Llanystudyg, Cardiff. w. Margaret & Ann 29</p> <p>Jones, Owen, 47, North Street, Penbryn, Carnarvonshire. w. Marquis of Anglesea 74</p> <p>Jones, Owen, Brynafryd, Llanbedrog, Carnarvon. w. Sarah Rowe 61</p> <p>Jones, Peter, Marine Terrace, Portmadoc. w. Ebenezer 96 w. Sultana Reina 129</p> <p>Jones, Peter, & Co.</p>	<p>Jones, Robert, Crueth, Carnarvon. Reg. Tons w. Cardiganshire 365</p> <p>Jones, Robert, & Tyng-Moes-Prathas, Carnarvon. w. Bolina 98</p> <p>Jones, Robert, & Co., Amlwch, Anglesea. w. Catherine Williams 97 w. Cwm Avon 74</p> <p>Jones, Robert, & Co., Caulys, Penbryn, Carnarvon. w. Physician 79</p> <p>Jones, Rowland, Llanystudyg, near Crivieth. w. Margaret & Mary 91</p> <p>Jones, R. & D., 28, Brunswick Street, Liverpool. i.s. Ant 107 i.s. Bee 96 i.s. Nant Francon 129 i. Snowdon 1065</p> <p>Jones, R. W., & Co., Newport, Mon. i.s. Camargo 638</p> <p>Jones, T., & Co., Port Penbryn, Bangor, Carnarvon. w. Margaret Jane 117</p> <p>Jones, T. C., 26, Chapel Street, Liverpool. i. Hermione 403</p>	<p>Jones, William, Amlwch, Anglesea. Reg. Tons w. Miss Evans 97</p> <p>Jones, William, w. Token 83</p> <p>Jones, William, 13, Church Street, Epremont, Cheshire. w. Cyprus 916</p> <p>Jones, William, w. John Williams 74</p> <p>Jones, William, Quey Parade, Swansea. w. Express 56</p> <p>Jones, William, & 27, High Street, Portmadoc. w. Florence 100 w. John Davies 84</p> <p>Jones, Wm., & Chater. w. Cestrian 84</p> <p>Jones, Wm., & Co., Abercon, co. Glamorgan. w. Sisters 165</p> <p>Jones, W. B., 7, Russell Street, Swansea. i. Gadlys 500 i. Kildonan 650</p> <p>Jones, W. E., & Port Dinorwic, near Bangor.</p>
--	---	---	--	--

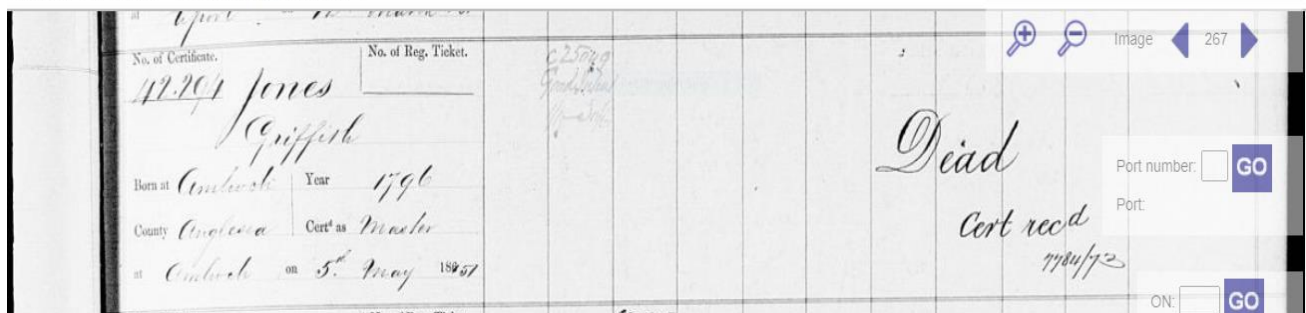
Masters,

The first Master is believed to be Captain Griffith Jones, born at Amlwch in 1796 (Fig 13).

Figure 14, Extract from Crew List archive.

 BT 124 entry for GRIFFITH JONES, Certificate: 42294. Source: BT124/6, recorded service: 1861 - 1886, certificates: 40802 - 43820, image 267, row 3

[Back to results](#)



A list of Masters from 1863 to 1878 is at Figure 14, below.

The Master at the time of the wrecking, at Abererch 1881, was Captain Wm Williams, Bangor.

Owen Jones from Amlwch, previously Seaman on *SV Amlwch Packet* and the *Martha* and then Master of the *Anne & Catherine* of Amlwch, became Master of the *SV Amlwch Packet* on 1/1/1868 then aged 39.

1878 There is a Mate listed as Owen Jones age 33, from Amlwch (previously served on the *SV Charles* as Able Seaman) i.e. 16 years younger than the previous Captain Owen Jones, but possibly related.

Figure 15, Extract from Crewlist: Masters of the *SV Amlwch Packet*.**Masters: From 1863 to 1878**

Surname	Forename	Address	Ship's name	Port	From	To	Archive	Reference	Links
OWEN	WILLIAM	AMLWCH PORT	AMLWCH PACKET	BEAUMARIS, 14/1862	1/1/1863	30/6/1863	Anglesey RO	W/DB/32	Transcript
		AMLWCH PORT	AMLWCH PACKET	BEAUMARIS, 14/1862	1/7/1863	31/12/1863	Anglesey RO	W/DB/32	Transcript
OWENS	WILLIAM	AMLWCH	AMLWCH PACKET	BEAUMARIS, 14/1862	1/1/1866	30/6/1866	Anglesey RO	W/DB/32	Transcript
		AMLWCH PORT	AMLWCH PACKET	BEAUMARIS, 14/1862	1/7/1866	31/12/1866	Anglesey RO	W/DB/32	Transcript
JONES	OWEN	AMLWCH	AMLWCH PACKET	BEAUMARIS, 14/1862	1/1/1868	30/6/1868	Anglesey RO	W/DB/32	Transcript
		AMLWCH PORT	AMLWCH PACKET	BEAUMARIS, 14/1862	1/7/1868	31/12/1868	Anglesey RO	W/DB/32	Transcript
JONES	O	AMLWCH	AMLWCH PACKET	BEAUMARIS, 14/1862	1/7/1869	31/12/1869	Anglesey RO	W/DB/32	Transcript
GOOD	W	AMLWCH	AMLWCH PACKET	BEAUMARIS, 14/1862	1/1/1870	30/6/1870	Anglesey RO	W/DB/32	Transcript
HUGHES	HUGH	AMLWCH PORT	AMLWCH PACKET	BEAUMARIS, 14/1862	1/7/1870	31/12/1870	Anglesey RO	W/DB/32	Transcript
PARRY	HU	AMLWCH	AMLWCH PACKET	BEAUMARIS, 14/1862	1/1/1873	30/6/1873	Anglesey RO	W/DB/32	Transcript
		AMLWCH	AMLWCH PACKET	BEAUMARIS, 14/1862	1/7/1873	31/12/1873	Anglesey RO	W/DB/32	Transcript
WILLIAMS	W	BEAUMARIS	AMLWCH PACKET	BEAUMARIS, 14/1862	1/1/1876	30/6/1876	Anglesey RO	W/DB/32	Transcript
WILLIAMS	WM	BANGOR	AMLWCH PACKET	BEAUMARIS, 14/1862	1/7/1876	31/12/1876	Anglesey RO	W/DB/32	Transcript
		ABERBERCH ROAD, PWLLHELI	AMLWCH PACKET	BEAUMARIS, 14/1862	1/1/1878	30/6/1878	Anglesey RO	W/DB/32	Transcript
WILLIAMS	WILLIAM	BANGOR	AMLWCH PACKET	BEAUMARIS, 14/1862	1/7/1878	31/12/1878	Anglesey RO	W/DB/32	Transcript

7.0 Analysis

I believe that the conclusions arrived at are accurate

8.0 Conclusions & Recommendations

I have probably spent approximately 25 hours on this project including about 14 hours on-line.

I do not believe that there is scope for any further development of this incident.

The wreck of the vessel is documented in Coflein and elsewhere and all the dates coincide.

9.0 References

Lloyds Registers
Coflein
Plimsoll Project: Lloyds register entries
Library of Wales
The Mercantile Navy Lists
Amlwch and Anglesey archive
Crew List
Ivor Wynne Jones
Henry Parry
Aled Eames
R Cadwalader

Appendices:**Appendix A, Specification *SV Amlwch Packet*.**

Vessel	Name/s	Amlwch Packet		
	Type	Schooner		
		Coastal Cargo, Built as a mail packet.		
Built	Date	Launched 1832		
	Builder	Nicholas Treweek		
		Amlwch, Anglesey		
Construction	Materials	Wood, Iron bolted.		
	Decks	Single with a hold and some passenger accommodation		
	Bulkheads	Not Known		
Propulsion	Type	Sail.		
	Details	Two masted (Main and Fore) Schooner		
Dimensions	Length	Estimated 60ft	ins	m
	Beam	16ft	ins	m
	Draught	8ft	ins	m
Tonnage	Gross	55		
	Net	27		
Owner	First	Treweek Sons & Co 1832 to 1873		
		Amlwch, Anglesey		
	Last	T Jones		
		Bangor		
	Others	T Thomas, Beaumaris and Bangor 01/1/76 to 31/12/76		
		Wm Williams, Abererch Road, Pwllheli, 01/1/78 to 30/6/78		
		G H Jones, Bangor from 01/7/1878		
Registry	Port	Beaumaris		
	Flag	British H.K.L.W.		
	Number	1545		
History	Routes	Poss. Holyhead – Dublin. Holyhead - Liverpool		
		Mail Packet then Irish Sea coastal trading		
	Cargo	Mail, Parcels, Copper, Coal, Wood.		
Final Voyage	From	Bristol Channel		
	To	Port Nant		
	Captain	Wm Williams, Bangor		
	Crew	Mate: William Williams 26 yrs. Boy: Hugh Williams 12 yrs.		
	Passengers	None		
	Cargo	Coal		
Wrecking	Date	14/10/1881		
	Location	Abererch Beach, one mile east of Pwllheli.		
	Cause	Hurricane force storm		
	Loss of life	None – All rescued with help from people on shore		
	Outcome	Sold for dismantling		

Appendix B, Extracts from the Mercantile Navy Lists showing the SV *Amlwch Packet*.

Mercantile Navy List

The Mercantile Navy List was first published in 1849. Whilst Lloyd's Register of Ships lists vessels over 50 tons for British vessels and 100 gross tons regardless of their country of registration, the Mercantile Navy List records all British registered vessels one quarter of a ton and over.

1848

BRITISH REGISTERED VESSELS.

17

H.J.S.B to H.K.C.W					H.K.D.B to H.K.M.W				
Off. No.	Signal Letters.	Name of Vessel, and Port of Registry.	Tons.	Horse Power.	Off. No.	Signal Letters.	Name of Vessel, and Port of Registry.	Tons.	Horse Power.
1	H.K.B.H	Elizabeth of Liverpool	113		1	H.K.L.K	SHARROCK OF LONDON	200	200
2	H.K.B.S	Laurel of Banff	99		2	H.K.L.S	Susan and Margaret of Dumfries	37	
3	H.K.B.T	Napoleon the 2nd of Liverpool	1433		3	H.K.L.T	Jessie McClew of Stranraer	98	
4	H.K.B.V	Sampson of Inverness	45		4	H.K.L.V	Conservative of Liverpool	55	
5	H.K.B.W	Commerce of Cardigan	34		5	H.K.L.W	<i>Amlwch Packet</i> of Beaumaris	27	
6	H.K.C.B	Frances Ann of Liverpool	63		6	H.K.M.B	Margaret of Waterford	108	
7	H.K.C.D				7	H.K.M.C	Friends of Aberystwith	39	

1858, page 232

Ship: AMLWCH PACKET

Image

Page 232 GO

Ami to Ane		Ane to Ann		Ann to Ann		Ann to Ann	
Off. No.	Name of Vessel and Port.	Off. No.	Name of Vessel and Port.	Off. No.	Name of Vessel and Port.	Off. No.	Name of Vessel and Port.
26091	Ami, Gooie	41265	Anemone, Picton, N. S.	26544	Ann, Gooie	26207	Ann, Sierra Leone
30926	AmicoFidelle, Malta	8855	Angela, Newcastle	14840	Ann, Guernsey	7883	Ann, Southampton
31751	Amicus, Adelaide	16880	Angela Burdett Coutts, Lipl.	35781	Ann, Halifax	13847	Ann, Southampton
11270	Amicus, Jersey	30042	Angelica, Malta	6251	Ann, Hartlepool	23835	Ann, Stockton
35679	Amiel, Lunenburg	8826	Angelina, Cardigan	19140	Ann, Hartlepool	2479	Ann, Sunderland
40678	Amillon, Singapore	37734	Angelina, St. John's, Nwfd.	23009	Ann, Hartlepool	23177	Ann, Sunderland
30249	Amiona, Bathurst	24463	Angelina, Shields	26304	Ann, Harwich	23358	Ann, Sunderland
9859	Amity, Aberystwith	36053	Angelique, Arichat, C. B.	12740	Ann, Hastings	23680	Ann, Sunderland
10664	Amity, Beaumaris	4922	Angerona, Boston	32053	Ann, Hobart Town	14017	Ann, Swansea
10892	Amity, Bridgwater	13267	Anghared, Carnarvon	7552	Ann, Hull	32506	Ann, Sylvest, Cape Hen
23908	Amity, Bristol	39294	Angier, Antigua	7661	Ann, Hull	33868	Ann, Sylvest, Cape Hen
22007	Amity, Cardigan	13279	Angier, Poole	8711	Ann, Inverness	23760	Ann, Teignmouth
9579	Amity, Colchester	3213	Anglesa, Glasgow	8539	Ann, Ipswich	7004	Ann, Truro
16356	Amity, Colchester	34857	Anglesa, Glasgow	11896	Ann, Ipswich	25140	Ann, Waterford
11434	Amity, Fowey	17122	Anglesa, Liverpool	26335	Ann, Ipswich	40183	Ann, Wellington, X. Ind
326	Amity, Gooie	26417	Anglesa, London	12013	Ann, Irvine	583	Ann, Wells
17421	Amity, Gooie	2246	Anglessa Lass, Beaumaris	14607	Ann, Irvine	16719	Ann, Weymouth
15169	Amity, Greenock	27004	Anglia, Chester	31334	Ann, Jaffna	9634	Ann, Whitby
25624	Amity, Greenock	555	Anglia, Liverpool	12811	Ann, Jersey	22263	Ann, Whitby
18132	Amity, Kirkwall	2144	Anglicania, Shields	24003	Ann, Lancaster	22562	Ann, Whitby
17502	Amity, Liverpool	19603	Anglo-French, Portsmouth	7809	Ann, Leith	8615	Ann, Whitehaven
4620	Amity, London	13228	Anglo-Saxon, Glasgow	12736	Ann, Lerwick	9280	Ann, Whitehaven
26401	Amity, London	26380	Anglo-Saxon, Liverpool	1627	Ann, Limerick	12751	Ann, Wigtown
18841	Amity, Maldon	26363	Anglo-Saxon, London	1828	Ann, Liverpool	5402	Ann, Wisbech
3678	Amity, Newcastle	11582	Anglo-Saxon, Shields	1993	Ann, Liverpool	4713	Ann, Yarmouth
19318	Amity, Penzance	24136	Angora, Fleetwood	6002	Ann, Liverpool	6513	Ann, Yarmouth
4248	Amity, Pwllheli	32462	Angus Henry, Sydney	6971	Ann, Liverpool	6775	Ann, Yarmouth
9664	Amity, Rochester	26383	Anjer, Liverpool	6884	Ann, Liverpool	6790	Ann, Yarmouth
20211	Amity, Rye	9807	Ann, Aberystwith	10478	Ann, Liverpool	15219	Ann, Yarmouth
2210	Amity, Shields	17006	Ann, Aberystwith	12041	Ann, Liverpool	23771	Ann, Adamson, Sunderland
39876	Amity Hall, Kingston, Ja.	37698	Ann, Arichat, C. B.	13078	Ann, Liverpool	33637	Ann, Amy, Jersey
1545	<i>Amlwch Packet</i> , Beaumaris	37702	Ann, Arichat, C. B.	14542	Ann, Liverpool	38027	Ann, Augusta, York, X. I.
17988	Annner, Pwllheli	40165	Ann, Auckland	16078	Ann, Liverpool	1438	Ann, Baldwin, Liverpool
6219	Amonocka, Wisbech	40244	Ann, Auckland	18039	Ann, Liverpool	20305	Ann, Bantfield, Sicily
		19511	Ann, Banff	24097	Ann, Liverpool	19278	Ann, Beer, Fowey

Mercantile Navy List 1867

Page 20 »

2308	Amity, Milford	N.T.M.S	43	John Trows, Pembroke.
4683	Amity, Newport	V.L.H.M	271	Wm. Williams, Newport, Monmouthshire.
11434	Amity, Plymouth		72	Richard Winsor, Plymouth.
4248	Amity, Pwllheli		23	William Howell, Nevin, Carnarvon.
9664	Amity, Rochester	K.J.G.F.	30	David Thomas Alton, Cheney Rock, Sheppy Is., Kent.
20211	Amity, Rye	M.W.F.J	43	A. R. Vidler, Rye.
28673	Amity, Scarborough		35	Rickman Skelton, Stoolale Yard, Fliley, Yorkshire.
52390	Amity, Sydney		29	William Loutit, Sydney, N.S.W.
39876	Amity Hall, Kingston, Jamaica	S.R.D.J	14	Samuel Stephens, Kingston, Jamaica.
1545	Amlwch Packet, Beaumaris		55	Nicholas Treweek, Amlwch, Anglesey.
22185	Ammonite, Ipswich		52	Edw. Packard, Westerfield, Ipswich, Suffolk.
43438	Amodavally, Jaffna		28	P. Murogapulle, Walwettytorre, Ceylon.
32956	Amoor, Liverpool	R.C.J.B	1344	Wm. Tarrell, Bristol.
39225	Amoret, Faversham	R.N.J.W	159	William Gann, High Street, Whitstable.
29464	Amoy, Dundee	Q.F.S.G.	299	James Parkman, Ferry Port on Craig, Fife.
40711	Amoy, Singapore	S.W.N.B	79	Tay Ho Swen, Singapore.
52929	Amphion, Borrowstoness		188	John Scott, Inverkeithing, Fife.
9383	Amphion, Greenock	F.H.C.O	19	Joseph Tomlin, Crosses, Isle of Wight.

Mercantile Navy List, 1870, page 19 Ship: AMLWCH PACKET Image source: [clip](#) Crew List Index Proj

Year 1870 GO Page 19 GO Notes Search

ALPHABETICAL LIST OF BRITISH REGISTERED VESSELS.

19

Official No.	Name of Ship and Port of Registry.	Commercial Code Signal (if any).	Registered Tonnage.	Horses Power.	Name and Address of Sole Registered Owner, or of Managing Owner when there are more Owners than One.
52390	Amity, Sydney		29	..	William Loutit, Sydney, N.S.W.
39876	Amity Hall, Kingston, Jamaica	S.R.D.J	14	..	Samuel Stephens, Kingston, Jamaica.
1545	Amlwch Packet, Beaumaris		55	..	Nicholas Treweek, Amlwch, Anglesey.
22185	Ammonite, Ipswich		52	..	Edw. Packard, Westerfield, Ipswich, Suffolk.
43438	Amodavally, Jaffna		28	..	P. Murogapulle, Walwettytorre, Ceylon.
58238	Amoor, Dundee	H.V.L.T	303	..	W. O. Taylor, Dundee.

B 2

Mercantile Navy List, 1880, page 164 Ship: AMLWCH PACKET, Sail Image source: [clip Crew List Index Project](#)

Year 1880 GO

Page 164 GO

Notes Search again

164 **ALPHABETICAL LIST OF BRITISH REGISTERED SAILING VESSELS.**

Official No.	Name of Ship and Port of Registry.	Rig.	Where built.	When built.	International Code Signal (if any).	Registered Tonnage.	Name and Address of Sole Registered Owner, or of Managing Owner when there are more Owners than One.
66359	Aminta, St. John's N.F.I.	Sr.	P. R. I.	1872	..	23	Joseph Chapman, Grimsby, Lincolnshire.
67665	Amity, Grimsby	Dy.	Ipswich	1872	..	66	Fredk. Osborne, 50, Orwell St., Grimsby.
17502	Amity, Liverpool	Bg.	Whithorn	1830	M.G.V.R.	87	John Halligan, Carlingford, co. Louth.
60759	Amity, Lowestoft	Dy.	Lowestoft	1871	..	27	Richard Butcher, 30, High St., Lowestoft.
68340	Amity, Plymouth	Cr.	Plymouth	1875	..	20	Thos. Robt. Roose, Plymouth.
59124	Amity, St. John, N.B.	Bk.	Sackville, N.B.	1872	R.P.V.T	535	Geo. M'Leod, St. John, N.B.
23873	Amity, Scarborough	Lt.	Hull	1860	..	35	Jas. Sellers, 23, E. Sandgate, Scarborough.
52390	Amity, Sydney, N.S.W.	K.	Hawkesbury Riv., N.S.W.	1866	..	29	William Loutit, Sydney, N.S.W.
39876	Amity Hall, Kingston, Jamaica	Sp.	London	(a)	S.R.D.J	14	Samuel Stephens, Kingston, Jamaica.
1545	Amlwch Packet, Beaumaris	Sr.	Amlwch	1832	..	55	Thomas Jones, 3, Mountain Pl., Bangor, Carnarvon.
-	Ammeperwa, Jaffna	Dhy.	Jaffna	1835	..	21	Asson Naynamazamadoc Moheddeen, Manaar.

Mercantile Navy List, 1882, page 177 Ship: AMLWCH PACKET, Sail Image source: [Memorial University Digital Arc](#)

Year 1882 GO

Page 177 GO

177 **ALPHABETICAL LIST OF BRITISH REGISTERED SAILING VESSELS.**

Official No.	Name of Ship and Port of Registry.	Rig.	Where built.	When built.	International Code Signal (if any).	Registered Tonnage.	Name and Address of Sole Registered Owner, or of Managing Owner when there are more Owners than One.
60759	Amity, Lowestoft	Dy.	Lowestoft	1871	..	27	Richard Butcher, 30, High St., Lowestoft.
68340	Amity, Plymouth	Cr.	Plymouth	1875	..	20	Thos. Robt. Roose, Plymouth.
52390	Amity, Sydney, N.S.W.	K.	Hawkesbury Riv., N.S.W.	1866	..	29	William Loutit, Sydney, N.S.W.
1545	Amlwch Packet, Beaumaris	Sr.	Amlwch	1832	..	55	Thomas Jones, 3, Mountain Pl., Bangor, Carnarvon.
-	Ammeperwa, Jaffna	Dhy.	Jaffna	1835	..	21	Asson Naynamazamadoc Moheddeen, Manaar.

This is the last entry – so consistent with having been scrapped after 1881.

Page 281

45 5 H.K.L.W Amlwch Packet of Beaumaris . 27 • H.K.C.B Commerce of Cardigan

Gore's Directory of Liverpool and Its Environs for the Year 1849.

PACKETS AND TRADERS.		83
PACKETS AND TRADERS.		
ABERDEEN.—Liverpool Packet, George Reid.	HUGH CRAIG and Co. Agents, 7, King-street.	
ABERDOVEY.—Sincerity, Mary Ann, Ann, Mary, and Success.	MOSES ELIAS, Broker.	
ABERYSTWITH.—Speculation, Sincerity, Sisters, Pilot, and John and Ann.	MOSES ELIAS, Broker.	
AMLWCH.—Providence, Margaret, Amlwch Packet, Cambria Cutter, and Ann.	E. WILLIAMS, Agent.	
ANNAN and CARLISLE.—Steam Packet. City of Carlisle, once a week.		

Mercantile Navy List 1864

BRITISH REGISTERED VESSELS.

H.K.D.B to H.K.M.W				
Off. No.	Signal Letters.	Name of Vessel, and Port of Registry.	Tons.	Horses Power.
2	H. K. L. S	Susan and Margaret of Dumfries	37	300
3	H. K. L. T	Jessie McClew of Stranraer	98	
4	H. K. L. V	Conservative of Carnarvon	57	
5	H. K. L. W	Amlwch Packet of Beaumaris	54	

Appendix C, Extract from Crew List for the SV Amlwch Packet. Voyages and final entry 1881.

Maritime History Archive

1881 Crew List Details

Home ◀◀ New Search ◀◀ Previous Crew Member ◀◀ Next Crew Member ◀◀ View Crew Member List

Name: Hugh Williams

Voyage Year: 1881

Vessel Name: Amlwch Packet

Official No.: 1545

RECEIVED
12 JUL 81
REGISTRY OF THE PORT OF SWANSEA

List D. No. 1545 Par PORT OF SWANSEA Amount of Fee £ 10

ACCOUNT OF VOYAGES AND CREW OF HOME TRADE SHIP, TO BE DELIVERED HALF-YEARLY TO THE SHIPPING MASTER AT THE ABOVE PORT.

Name of Ship	Official Number	Port of Registry	Port No. and Date of Registry	Registered Tonnage	MANAGING OWNER		MASTER		Date of Commencement of Half-Year	Date of Termination of Half-Year
					Name	Address (state No. of House, Street, & Town)	Name	Address (state No. of House, Street, & Town)		
Amlwch Packet	1545	Swansea	14 1862	54	J. H. Jones	Banger	W. Williams	Porthell, Swansea	1 st January 1881	31 st June

Account of the Voyages (C)
 Reported a list of the crew at Port Madoc 2nd January 1881 and round C.C. April at Port Madoc from 1st January to the 31st April.
 Sailed from Port Madoc 3rd February and arrived at Swansea 2nd March. Sailed from Swansea 12th March and arrived at Glasgow 16th March. Sailed from Glasgow 2nd April and arrived at Port Madoc 29th March.
 Port Madoc 13th April Sigmouth 22nd April Sigmouth 2nd May Penryn 8th May Penryn 25th May Port Madoc 28th May.
 Port Madoc 9th June Southampton 17th June Southampton 27th June Par 8th July 1881.

ACCOUNT OF THE CREW AND OF OTHER PARTICULARS REQUIRED BY LAW, IN RESPECT OF THE ABOVE-MENTIONED VOYAGES OR EMPLOYMENT OF THE SAID SHIP.

Merchant Seaman's Fund Contribution		Name of the MASTER and the Crew Christian and Signature to be set forth at full length (see Note 2).	Age	Tone and County where born.	No. of Fund Ticket (if any)	No. of Royal Naval Volunteer Certificate (if any)	Ship in which he last served, and Port also, together with the nature of his Employment.	Date and Place of Discharge from each Ship.		Date and Place of joining this Ship.		Is what Capacity employed, and if Mate, No. of his Certificate (if any).	Date, Place, and Cause of Death, or Leaving this Ship, also of Maiming or Hurt.	
Months	Days							Date	Place	Date	Place		Date	Place
		William Williams	34	Porthell	-	-	Amlwch Packet of Swansea	Continued from last 6 Months		Master	1 st July	Par	Continued	
		William Williams	26	Porthell	-	-	do	Continued from last six Months		Mate	1 st July	Par	Continued	
		Hugh Williams	19	Porthell	-	-	John Jones's Swansea	27 th Jan, Port Madoc 2 nd May, Port Madoc C.C.			1 st July	Par	Continued	

ACCOUNT OF APPRENTICES ON BOARD.

Name of Apprentice, Christian and Signature at full length.	Age	Registry of Indenture.		Registry of Assignment (if any).	
		Date of.	Part of.	Date of.	Part of.

PARTICULARS RELATING TO WAGES AND EFFECTS OF DECEASED SEAMEN (see Note 4).

Name of Deceased Seaman, Christian and Signature at full length.	No. of Fund Ticket, or Certificate or R.V.C. (if any).	Net Amount Due paid to Shipping Master, as per Account in Form KK.	Particulars of Effects (if any) delivered to Shipping Master, as per Account in Form KK.
		£ - - -	

Received at Port Madoc of Swansea the 7th day of July 1881
 by W. Williams Shipping Master.

I Declare the above Account to be true.
 Signed W. Williams Master or Owner.

* The Shipping Master should certify from the Master of the Ship the Christian (Under R.V. 2. or E. 2.) belonging to any Seaman who has died or deserted, and forward the same to the Registrar General with this Return. Should the Master have died his Certificate should also be obtained and forwarded in like manner.

LONDON: PRINTED BY GEORGE EDWARD EYRE AND WILLIAM SPOTTISWOODE, PRINTERS TO THE QUEEN'S MOST EXCELLENT MAJESTY. [OVER]

1881 Crew Member Details

Home <<> New Search <<> Previous Crew Member <<> Next Crew Member <<> View Crew Member List

Name: William Williams Voyage Year: 1881 Vessel Name: Amlivch Packet Official No.: 1545

This Agreement is to be used only for Voyages made on the Coasts of the United Kingdom, or to the Islands of Jersey, Guernsey, Alderney, Sark, and Isle of Man, or to places on the Continent of Europe between the River Elbe and Brest, inclusive.

Eng. 6.

G. R. A. H. U. OFFICE OF CUSTOMS, CONSUL, OR VICE-CONSUL, TO BE MADE WITH THE CONSENT OF THE PERSONS INTERESTED.

Sanctioned by the Board of Trade, July 1880. In pursuance of 17 & 18 Vict. c. 134.

HALF-YEARLY AGREEMENT AND ACCOUNT OF VOYAGES AND CREW OF A SHIP ENGAGED IN THE HOME TRADE ONLY.

NOTICE.—As this Agreement is made for Voyages in the Home Trade only, the Crew need not be engaged before a Superintendent of Mercantile Marine. On whatever date the Agreement is made, it expires on the next following 30th day of June or 31st day of December next, or the case may be, and is then, or within 21 days afterwards, to be delivered to the Superintendent of a Mercantile Marine Office. If, however, the Ship is absent from the United Kingdom on the 30th day of June or 31st day of December, then this Agreement remains in force until the first arrival of the Ship at her final port of destination in the United Kingdom after such date, or the discharge of cargo consequent on such arrival, when it is to be delivered up to a Superintendent.

On this Agreement and Account of Crew being duly completed and deposited at a Mercantile Marine Office, the Superintendent will issue the Certificate C.C., to enable the Ship to be cleared at the Custom House.

Neglect to deposit the returns within the time prescribed by the Merchant Shipping Act subjects the Owner or Master to a penalty, and will lead to delay in the issue of the Clearance Certificate and consequent detention of the Ship.

N.B.—The Master's attention is specially directed to the "Instructions to Masters of Home Trade Vessels," contained on page 10.

Name of Ship.	Official No.	Port of Registry.	Port No. and Date of Register.	Registered Tonnage.	Nominal Horse-power of Engines (if any).	No. of Beams for whom accommodation is certified, 20 & 21 Vict. c. 134.
Amlivch Packet	1545	Beaumaris	14 1862	54		

REGISTERED MANAGING OWNER, or PERSON appointed under the 38 & 39 Vict. c. 88.		MASTER.		Distance in feet and inches between the centre of the disc, showing the maximum load line in salt water, and the upper edge of the lines indicating the position of the ship's deck above that centre.	
Name.	Address. (State No. of House, Street, and Town.)	Name.	No. of Certificate (if any).	Address. (State No. of House, Street, and Town.)	
J. H. Jones	Banger	J. Williams		Pwllheli	

Scale of Provisions to be allowed and served out to the Crew during the Voyage, in addition to the daily issue of Line and Lemon Juice and Sugar, or other antiscorbutics in any case required by Law.	Bread lb.	Rice lb.	Pork lb.	Tinned Meats lb.	Rasp and Currant Juice lb.	Preserved Peas lb.	Com-pared or Pre-served Vegetables lb.	Flour lb.	Beans lb.	Lard lb.	Tea lb.	Sugar lb.	Spice lb.	Meat in Water lb.

The several Persons whose names are hereto subscribed, and whose description are contained on the other side or sides, and of whom 2 are engaged as Sailors, hereby agree to serve, in the several capacities expressed against their respective Names, on board the said Ship, which is to be employed in the General Coasting Trade.

And the Crew agree to conduct themselves in an orderly, faithful, honest and sober manner, and to be at all times diligent in their respective Duties, and to be obedient to the lawful commands of the said Master or of any Person who shall lawfully succeed him, and of their Superior Officers, in everything relating to the said Ship and the Stores and Cargo thereof, whether on board, in boats, or on shore; in consideration of which Services to be duly performed, the said Master hereby agrees to pay to the said Crew as Wages the Sums against their Names respectively expressed, and to supply them with provisions according to the above Scale: And it is hereby agreed, That any Embezzlement or willful or negligent Destruction of any part of the Ship's Cargo or Stores shall be made good to the Owner out of the Wages of the Person guilty of the same: And if any Person enters himself as qualified for a duty which he proves incompetent to perform, his Wages shall be reduced in proportion to his incompetency; and it is also agreed that the Regulations for maintaining discipline sanctioned by the Board of Trade, which are printed herein and numbered by the parties hereto, and shall be considered to be embodied in this Agreement.

And it is also agreed, That if any Member of the Crew considers himself to be aggrieved by any breach of the Agreement or otherwise, he shall represent the same to the Master or Officer in charge of the Ship in a quiet and orderly manner, who shall thereupon take such steps as the case may require: and it is also agreed, That the

Said crew shall work all cargoes a ballast when required

Date and Place of first Signature of Agreement.

Date.	Place.
7th July 1881	Par

In Witness whereof the said Parties have subscribed their Names on the other Side or Sides hereof on the days against their respective Signatures mentioned.

William Williams Master's Signature.

These Columns to be filled in by the Master at the end of the last Voyage or the half-year.			To be filled in by the Superintendent.	
Date of Termination of the last Voyage.	Port at which the last Voyage terminated.	I hereby declare to the truth of the Entries in this Agreement and Account of Crew, &c.	Received at	the day of
15/10/81	Pwllheli	William Williams Master.	1882.	August

1 Here the probable nature of the Ship's employment for the ensuing six months is to be described, thus, "In the Coasting Trade of the United Kingdom"; "In the Home Trade." The particulars of each Voyage made under this Agreement are to be inserted in the Form provided on page 10.

2 Here are to be inserted the Numbers of any of the Regulations for maintaining discipline issued by the Board of Trade, and printed on page 9 hereof, which the parties agree to adopt.

3 Here any stipulations may be inserted to which the parties agree, and which are not contrary to Law.

N.B.—This Form must not be unstitched. No leaves may be taken out of it, and none may be added or substituted. Care should be taken at the time of Engagement that a sufficiently large Form is used. If more men are engaged during the half-year, terminating on the 30th day of June or 31st day of December next, than the number for whom signatures are provided in this Form, an additional Form Eng. 6 should be obtained and used.

[Ten Pages.]

Crew on board at time of wrecking (possibly all family)

Name: William Williams Voyage Year: 1881 Vessel Name: Amlivch Packet Official No.: 1545

[First Crew List Page] [Prev] 1 2 3 4 [Next] [Last Crew List Page]

(N.B. 4 out of the 10 pages in the agreement were scanned. The other 6 pages did not contain any information.)

Name of

PARTICULARS OF ENGAGEMENT.

Reference No.	SIGNATURES OF CREW.	Year of Birth.	Town or County where born.	If in the Reserve, No. of Commission or R V 2.	Ship in which he last served.		Date and Place of signing this Agreement.	
					State Name and Official No. or Port she belonged to.	Year.	Date.	Place.
1	2	3	4	5	6	7	8	
1	William Williams <small>Master to sign first.</small>	1827	Pwllheli	e	Amlivch Packet	1881	7 July	Par
2	William Williams	1855	Pwllheli	e	do	1881	7 July	Par
3	Hugh Williams	1862	Pwllheli	e	do	1881	7 July	Par
4								

Crew paid off record,

Name: William Williams Voyage Year: 1881 Vessel Name: Amlivch Packet Official No.: 1545

[First Crew List Page] [Prev] 1 2 3 4 [Next] [Last Crew List Page]

(N.B. 4 out of the 10 pages in the agreement were scanned. The other 6 pages did not contain any information.)

Ship Amlivch Packet

3

PARTICULARS OF DISCHARGE, &c.
To be filled in by the Master upon the Discharge, Death, or Desertion of any Member of his Crew.

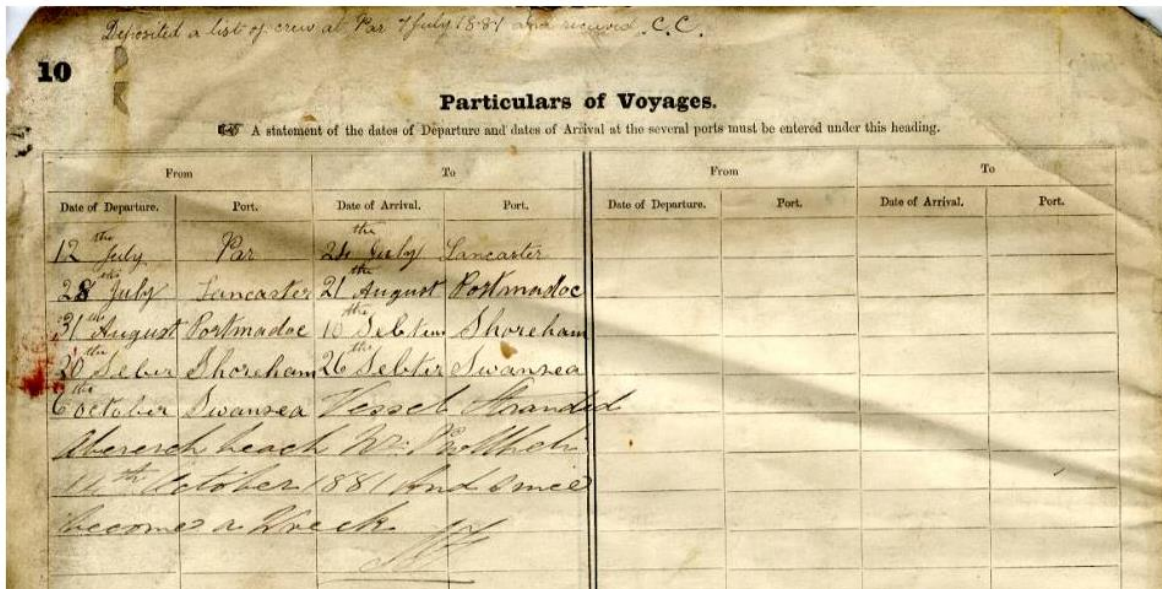
In what Capacity engaged, and if Master, Mate, or Engineer, No. of his Certificate (if any).	Time at which he is to be on board.	Amount of Wages per Week, Calendar Month, Share, or Voyage.* <small>(Erase words which do not apply.)</small>	Amount of Wages advanced on entry.	Signature of Superintendent of Mercantile Marine, H.M. Consul, or other Witness to the Engagement.	Date, Place, and Cause of leaving this Ship, or of Death.			Report of Character. I		Reference No.
					Date.	Place.	Cause.†	For Ability in Boatmanship.	For General Conduct.	
9	10	11	12	13	14	15	16	17	18	
Master			✓	J. Penrose			vessel becomes a wreck.			1
Mate	alone 3	5.0	✓	J.P.	12/10/81	Pwllheli	Wrecked			2
O.S.	alone 2	5.0	✓	J.P.	do	do	do			3

Final entry confirming the wreck:

Name: William Williams **Voyage Year:** 1881 **Vessel Name:** Amlvch Packet **Official No.:** 1545

[First Crew List Page] [Prev] 1 2 3 4 [Next] [Last Crew List Page]

(N.B. 4 out of the 10 pages in the agreement were scanned. The other 6 pages did not contain any information.)



Reads: Left Swansea 6th October –

Then: ‘Vessel stranded Abererch beach, near Pwllheli 14th October 1881, and since became a Wreck’.

Last voyages:

Par is a copper exporting Par is a village and fishing port with a harbour on the south coast of Cornwall.



Left Swansea on 6th October 1881.

Appendix D, The Timeline for the *SV Amlwch Packet*.

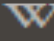

- 1832 Built at Treweek Yard, Amlwch, Anglesey. Owner Treweek Sons & Co. Master Wm Owen
- 1863 Master Wm Owen, Amlwch Port
- 1868 Master Owen Jones, Amlwch 1/1/1868 to 31/12/1869
- 1870 Master W Good, Amlwch 1/1/1870 to 30/6/1870
- 1870 Master Hugh Hughes, Amlwch Port
- 1873 Master H U Parry, Amlwch
- 1876 Master W Williams, Beaumaris 1/1/1876 to 30/06/1876
- 1876 Master Wm Williams, Bangor from 1/7/1876. Owner 1/1/1876: Thos. H Jones, Beaumaris
- 1878 Master Wm Williams, Abererch Road, Pwllheli 1/1/1878 to 30/6/1878 Also listed as Owner for this period.
- 1878 Master Wm Williams, Bangor. Owner G H Jones, Bangor.
- 1880 Owner T Jones, Bangor
- 1881 Wrecked aground at Abererch. Master: Captain Griffith Jones, Bangor. Owner GH Jones (T Jones & Co.), Bangor

Appendix E, The storm 14th October 1881, extracts from contemporary newspaper reports.

Extracts from the Cambrian News and Merionethshire Standard.

News  Cite  Share

THE STORM. I Since the terrible gale, known in this part of the country as the Royal Charter gale there has not I be so severe a storm on the Welsh coast as was experienced last Friday and the preceding Thursday night. Induration it was more prolonged than that storm in which the large steamship and its living freight were lost. The wind began to freshen on Thursday evening from the south-south-east, and, increasing in force, veered to the south-south-west between ten and eleven, at which time it was blowing a gale. The storm continued with increased violence ,until three o'clock on Friday afternoon, when rain began to fall, and the wind, which was then blowing almost due west, to abate. It is calculated by Professor Stone, of the

News  Cite  Share

PWLLHELI. A most terrific storm has prevailed here from about midnight on Thursday last week. It is feared that great destruction has been done to property, both on land and sea. A large stack of hay belonging to Mr. Owen Owens, coal merchant, of this town, was whirled away and scattered before the wind. Several signal posts on the Cambrian Railways have been blown down. House tops and chimney pots have been also blown off in several of the adjacent neighbourhoods. About six a.m. on Friday, the schooner Dreadnought, Captain Bogan, laden with pitwood, from Cork for Barrow, parted her cables at St. Tudwell's Roads, and was driven ashore at Abererch beach, near this town. The crew were all saved by means of ropes attached from the shore to the rigging. The surf is making a clean sweep over the vessel, and she will be greatly damaged, if not a total wreck. The schooner Amlwch Packet, Captain Williams, with coals, from Bristol Channel for Port Nant, is also ashore here, having drifted before the wind from the roads; crew saved. The Harkaway, from Beaumaris, met with a similar fate, as did also the schooner John Ellis, Captain Willoughby, from Portmadoc for Copenhagen crew saved. The brig St. George, for Aberdovey, laden with deals, is also ashore crew saved.