

**Welsh Wreck Web Research Project
(North Cardigan Bay)
On-line research into the wreck of the:
Ann & Catherine**



A cargo smack 1875

Report compiled by:

Graeme Perks

Report Title:

**Welsh Wreck Web Research Project
(North Cardigan Bay)
On-line research into the wreck of the:
*Ann & Catherine***

Compiled by:

Graeme Perks
graperks@aol.com
Sutton Coldfield
UK

On behalf of:

Nautical Archaeology Society
Fort Cumberland
Fort Cumberland Road
Portsmouth
PO4 9LD
Tel: +44 (0)23 9281 8419
E-mail: nas@nauticalarchaeologysociety.org
Web Site: www.nauticalarchaeologysociety.org

Managed by:

Malvern Archaeological Diving Unit
17 Hornyold Road
Malvern
Worcestershire
WR14 1QQ
Tel: +44 (0)1684 574774
E-mail: MADUdiving@gmail.com
Web Site: www.madu.org.uk

Date:

April 2022

Report Ref:

Leave blank

1.0 Abstract

The “www Research Project” is about, discovering by on line research details of ships, on the MADU data base of wrecks of North Wales, the circumstances of their loss, details of the owners and crew, the cargo carried and their history.

The *Ann & Catherine* was a wooden smack built by Griffith Davies at Maesgarnedd, near Barmouth in 1839. The *Ann & Catherine* was registered at Beaumaris, later at Caernarfon but appears to have initially been based at Barmouth. The *Ann & Catherine* sailed to England, Ireland and Scotland. In 1856 the crew were rescued by the RNLi and in 1872 in the *Ann & Catherine* was towed in disabled after a rigging failure. The *Ann & Catherine* was reported beneaped twice, being refloated the second time with difficulty due to a gale.

The *Ann & Catherine* broke away from her mooring, unattended in 1878 and was wrecked on the shore.

2.0 Index

2.1 Table of Contents	Page No.
1.0 Abstract -----	3
2.0 Index -----	4
2.1 Table of Contents	4
2.3 List of Pictures	5
2.4 Contributors	5
2.5 Abbreviations	5
3.0 Introduction -----	6
4.0 Background -----	7
5.0 Research Methodology -----	9
6.0 Results -----	11
7.0 Analysis -----	20
8.0 Conclusions & Recommendations -----	22
9.0 References -----	23
 Appendices:	
Appendix A – L R entries Ann & Catherine -----	24
Appendix B – Timeline for Ann & Catherine -----	25
Appendix C – Lloyds surveyors report for Ann & Catherine -----	38
Appendix D – Ports and other Locations -----	41
Appendix E – Mercantile Navy List -----	42
Appendix F – Crew Lists Index -----	43

2.3 List of Pictures

Page No.

Front Cover: A cargo smack 1875 -----	1
Fig. 1 Portinllaen Harbour 1893 -----	12
Fig. 2 Abererch beach -----	18

2.4 Contributors

Madu

2.5 Abbreviations

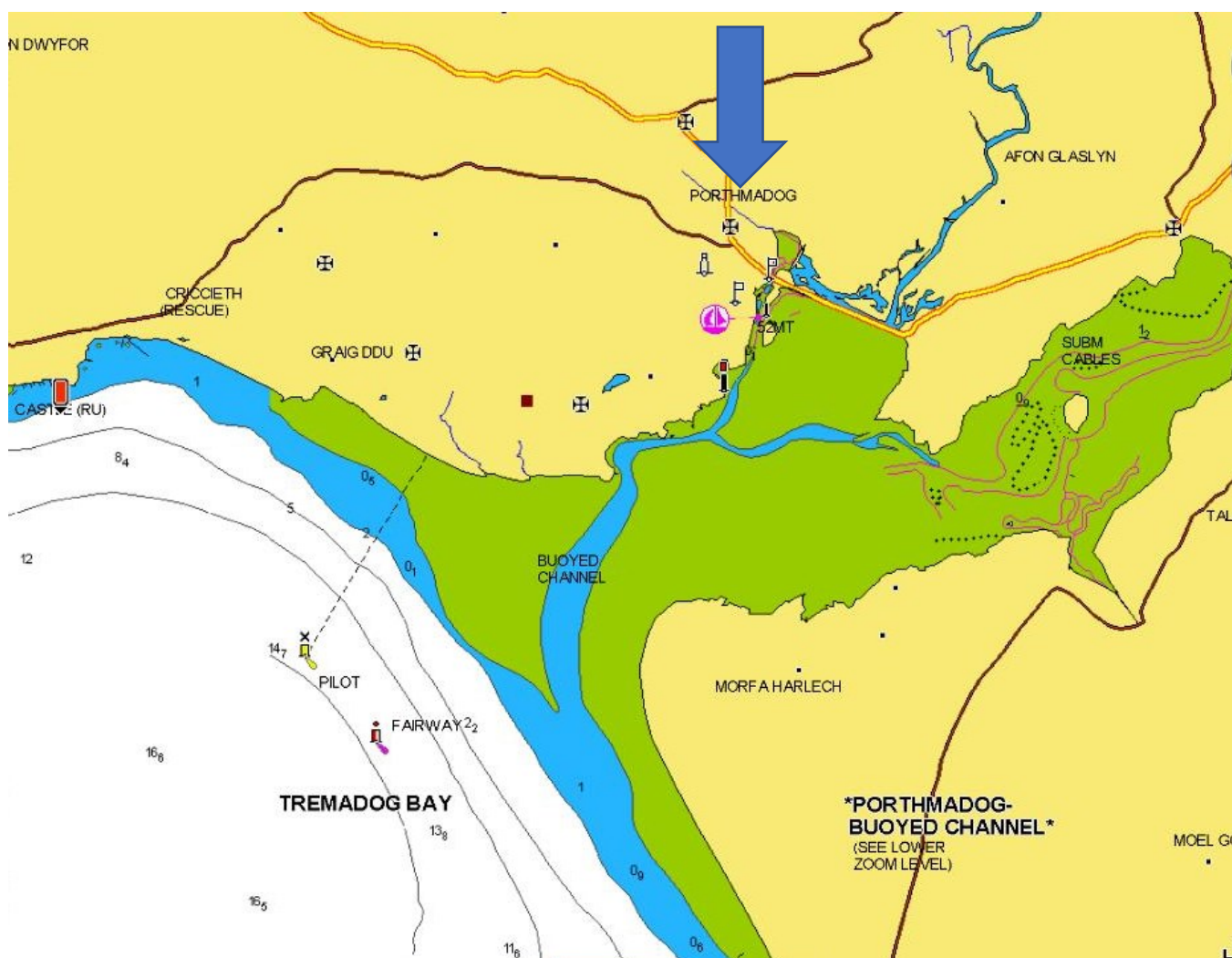
BNA	British Newspaper Archives
LR	Lloyds Register of shipping
MADU	Malvern Archaeological Diving Unit
MNL	Mercantile Navy List
NAS	Nautical Archaeology Society
NAW	National Archives of Wales
NPRN	National Primary Resource Number
OS	Ordnance Survey
RNLI	Royal National Lifeboat Institution
SMG	Shipping and Mercantile Gazette
WNL	Welsh Newspapers on Line
w/e	Week ending

3.0 Introduction

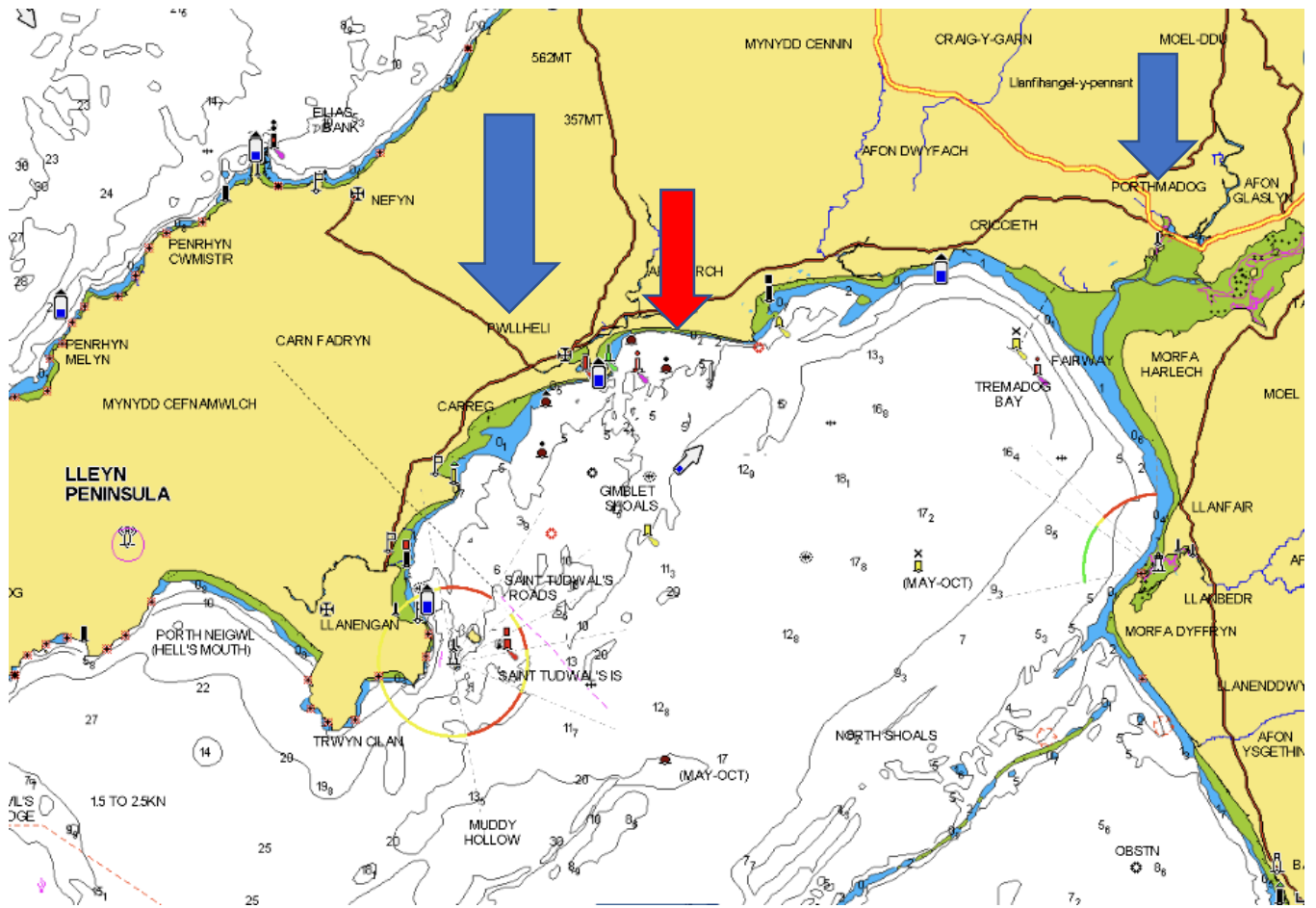
1. I selected *Ann & Catherine* to research because she was a smack and wished to identify her and see how much information I could find about her. I also wanted to find out what happened and I wanted to discover:
2. The dimensions of the vessel, although for this period of time apart from the draught, they would have only been recorded in on line information if the Lloyd's survey was available or the vessel had been advertised for sale in a surviving newspaper. Who the builder was and when she was built and any other information available about her.
3. Information concerning the voyages, cargo's, any events affecting the vessel, details of its masters, crew and owners.
4. To find out the sequency of events leading up to the loss of the vessel, whenever that was and the event in 1878.
5. To discover the cause of the event in 1878 and if the vessel survived, the cause of its eventual loss.
6. The events that happened after the incident in 1878 and up to and after its loss if it survived.
7. If there were any previous research of the vessel for the 1878 incident and its story.
8. If there was a wreck site for *Ann & Catherine* and if it had been identified, dived and recorded.
9. If any salvage of the vessel and its cargo had been carried out
10. If any previous reports had been produced for the *Ann & Catherine*.


4.0 Background

When I started this project it was reported that the *Ann & Catherine* was a wooden smack of 31 tons built in 1839 involved in an incident in Tremadog Bay, near Pwllheli on October 10 1878. There was also an *Ann & Catherine* a wooden smack reported sunk in the harbour at Barmouth on 27th July 1856, a Barmouth vessel.



Porthmadog & Approaches



Porthmadog & Tremadog Bay,  Abererch Beach

5.0 Research Methodology

I used a Microsoft Pixel laptop with access to my home internet running windows 10 operating system. I also used my Apple I pad for research when I was away from the laptop. The new internet provider has now connected my home by a fibre connection so it is very much faster. The Laptop uses Bing search engine but I also use Google which produces less advertisements and less Americanised content.

I searched Lloyds Register of Shipping (LR) for "*Ann & Catherine*" looking for details of her dimensions, master, builders and owners from 1839 with a match. I then searched yearly until 1878.

I searched LR ships, plans and survey reports for "*Ann & Catherine*" with a match.

I searched the Crewlist Project for "*Ann & Catherine*" looking for her official number and links to MNL, appropriation book, crew lists, owner and master with a match. I followed the links for crew lists and found matches.

I searched The British Newspaper Archives (BNA) for "*Ann & Catherine*", and "*Ann& Cath*" looking for sailings, arrivals, a launch, owners, builders, mishaps and any details of her loss and found a number of matches. I changed the search to "*Ann& Cath*" after I found matches where Catherine had been shortened but I needed to read each possible match to identify where it was "*Ann & Catherine*" or "*Cathrn*" instead of scanning the possible matches. The usual search produces almost all the matches on the first few pages but in this search the matches appeared on any page.

I found matches from 1874 for Ann Catherine, Griffiths making voyages to the Baltic, Spain, Portugal and France which I suspected were excessive for a 31 ton smack. I checked the Mercantile Navy List (MNL) and found a schooner Ann Catherine 99 tons also registered at Caernarfon with an owner Griffith Griffiths, the alphabetic listing separates names with & included from the same names without. The Ann & Catherine also had an owner and master Lewis Griffiths. I searched "*Ann & Catherine*" looking for a master Griffiths with a tonnage of 31, in newspapers in Wales on BNA and found matches. I also found Ann Catherine 99, Griffiths sailing to the Baltic.

I searched Welsh newspapers on line for "*Ann & Catherine*" looking for sailings, arrivals, a launch, owners, builders and any details of her loss and found matches.

I searched Coflein site for "*Ann & Catherine*" looking for any details of the wreck and a chart with a match.

I searched wreckeu site for "*Ann & Catherine*" looking for any details of the wreck with no matches.

I searched RNLi magazine archive for "*Ann and Catherine*" looking for an incidents involving her and found a match in 1857 when the crew were rescued.

6.0 Results

Vessel	Name/s	Ann & Catherine	
	Type	Smack	
		Cargo	
Built	Date	1839	
	Launched	12/08/1839	
	Builder	Griffith Davies	
		Maesgarnedd, near Barmouth	
Construction	Materials	Wood	
	Decks	One	
	Bulkheads	None	
Propulsion	Type	Sail	
	Details	Fore and aft rigged	
Engine	Details	N/A	
	Boilers		
Drive	Type		
	Number		
Dimensions	Length	42 ft	0 ins
	Beam	15 ft	6 ins
	Draught	7 ft	10 ins
Tonnage	Gross	32 tons (31 2526/3580)	
	Net	28 tons	
Owner	First	John Williams, John Davies & Co	
	Last	William Jones	
	Others	John Williams, Dolgelly, Lewis Griffiths, Rhaddall, Merioneth	
Registry	Port	Beaumaris, Caernarvon	
	Flag	British	
	Number	10282	
History	Routes	Wales to Ireland, Scotland and England	
	Cargo	Coal, Slates	
Final Voyage	From	Lymington	
	To	Portmadoc w/e October 2 1878	
	Captain	Griffiths	
	Crew	None	
	Passengers	None	
	Cargo	None	
Wrecking	Date	October 8th 1878	
	Location	On mooring at Porthmadog	
	Cause	South westerly Storm force 10 winds	
	Loss of life	none	
	Outcome	Wrecked, blown ashore on weir at Abererch beach	

Shipping and Mercantile Gazette - Friday 08 February 1850

PORTINLLAEN – Feb. 6 : We were visited last night with a tremendous gale at N.W., with heavy showers of sleet and rain, and today a perfect gale, wind N.W. The schooner *Sedulous*, of Nevin; *Amner* of Pwllheli; and *Ann and Catherine* of Beaumaris; parted in the roads at 4 A.M. this morning and ran on the beach.



Fig. 1

Portinllaen Harbour 1893

Caernarvon & Denbigh Herald - Saturday 02 August 1856

BARMOUTH —The vessel *Ann and Catherine*, of Barmouth, bound from Drogheda to this port, arrived outside the bar here in the evening of the 24th ult. The tide being low she was obliged to anchor off till about 12 o'clock, before which time however the wind rose, and the sea became very stormy. The united strength of four sturdy pilots was not sufficient to enable them to come along side of her, and the night being very dark, the vessel got ashore. The inhabitants were aroused about four o'clock on the 25th, and the coxswain of the lifeboat having summoned his crew, they succeeded, after much exertion, in taking the crew ashore. We are happy to learn that the vessel got off next tide, very little injured. It was found necessary to discharge the cargo into barges and thence convey it to Barmouth.

JOURNAL OF THE NATIONAL LIFE-BOAT INSTITUTION JANUARY 1st, 1857

SERVICES OF LIFE-BOATS.

Barmouth.—At midnight, on the 25th of July last, the smack, *Ann and Catherine*, of Barmouth, stranded on the bar off that place, the wind blowing a gale from W. S. W. at the time. At 2 A.M. the Barmouth lifeboat, belonging to the National Life-boat Institution, was launched and succeeded in rescuing her crew of three persons, and in bringing them safely to the shore. The lifeboat was reported to have behaved very well on the occasion.

Portsmouth Times and Naval Gazette – Saturday 06 September 1856

PRESERVATION OF LIFE FROM SHIPWRECK – On Thursday a meeting of the Royal National Lifeboat Institution was held at its house.

A reward of £6 10s was voted for the crew of the lifeboat of the Institution stationed at Barmouth, in consideration of their laudable services in putting off in the lifeboat and rescuing the crew of three men of the smack *Ann and Catherine*, which was stranded near the old lighthouse of that place during a heavy gale of wind on 25th July.

Lloyd's List - Saturday 10 August 1861

TENBY. 8th arrived *Anne & Catherine*, Prichard for Ipswich—leaky [Llanelly]

North Wales Chronicle - Saturday 11 January 1862

B A R M O U T H .

T O B E S O L D B Y A U C T I O N ,
BY MR. D. JONES,
 At the RED LION INN, Barmouth. on MONDAY, Jan. 20,
 1862, at 6 o'clock p.m.,—
THE SMACK, "ANN & CATHERINE,"
 of Barmouth, 28 Tons burden, and carrying 50 Tons.
 She is perfectly sea-worthy, and all her materials in good
 condition,—her rigging being quite new.
 For further particulars apply to Capt. JOHN WILLIAMS,
 Schooner "Ellen," Barmouth, or to the Auctioneer, Tre'-
 madoc.

Shipping and Mercantile Gazette - Friday 17 July 1863

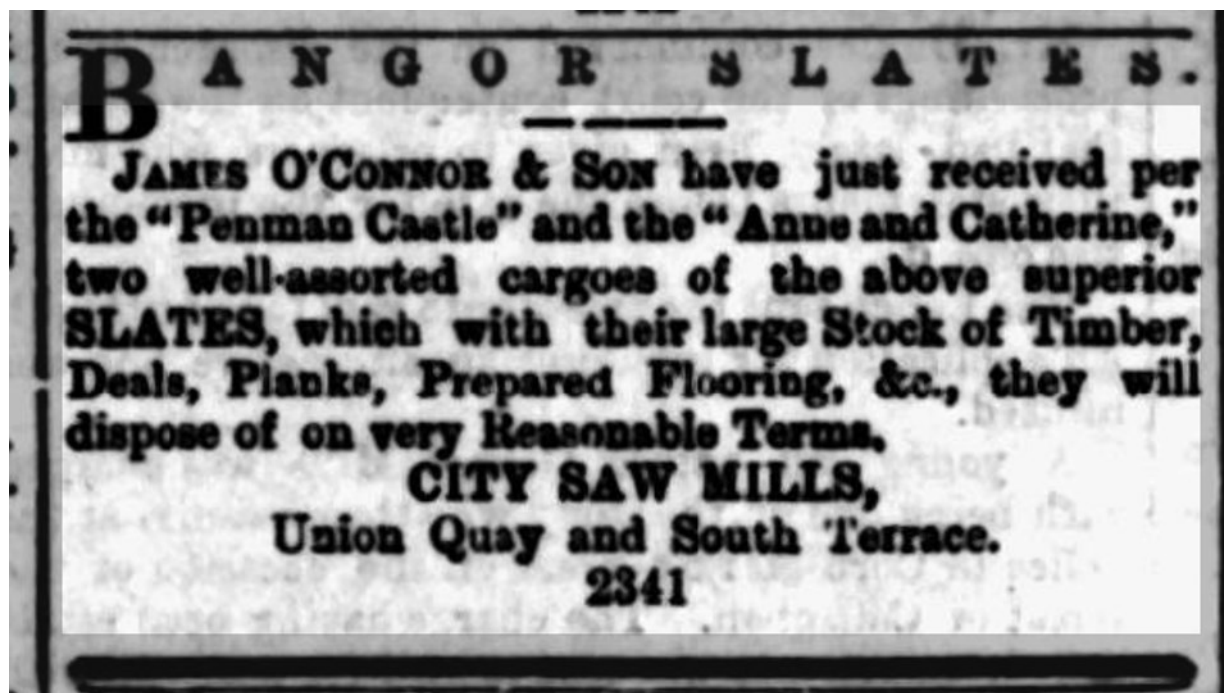
MILFORD—July 16 :N fine, very warm.

Put in - The *Ann and Catherine*, Pritchard, from Britonferry for Belfast, making water.

Globe - Saturday 12 December 1868

BANGOR, Dec. 11.— Arrived, the *Ann and Catherine* from Poole, for Runcorn, with loss of anchors, chains, and sails and windlass damaged.

Cork Daily Herald - Thursday 22 April 1869



Shipping and Mercantile Gazette - Tuesday 26 December 1871

BARMOUTH—Dec. 25; A strong from the SW all day yesterday and most part of last night, with heavy rain, and very thick, but moderated towards the morning. The wind to-day is W, light, and weather clear. No casualties reported along the coast. Barometer 29 60. Windbound— *Ann and Catherine*, Griffiths, for Liverpool; and *Margaret and Jane*, Pugh, for Portmadoc.

Lloyd's List - Friday 19 January 1872

HOLYHEAD, 17th Jan. The *Ann & Catherine*, from Garston to Kingstown, has put in to stop leak.

Shipping and Mercantile Gazette - Tuesday 30 July 1872

The following Depositions, continued from our of yesterday, have been made to the Receivers of Wreck at different Ports, the Reports from our own Correspondents having already appeared in the Shipping Gazette :—

Ann and Catherine. —Report of John Griffiths, Master of the smack *Ann and Catherine*, of Caernarvon, from Portmadoc for Newport (Mon.), with a cargo 54 tons slates: Left Portmadoc July 24, at 10 a m., wind westerly, light, and fine. Proceeded, and on Friday, the of 26th July, 10 a.m., the tide at the time being near high water, weather cloudy, and wind S.E., a fresh breeze, the ship being under whole sail, a wind on the starboard tack, St. Ann's Head bearing N.N.E., distant about five miles, with considerable beam sea running, the mast-head, immediately under the rigging, gave way, and broke short off, and everything aloft came down deck with a crash, the topmast breaking and the mainsail splitting in the fall. Set the jib with the cross jack halliard, and steered for Milford Haven. About 11 a.m. the smack *Margaret and Jane*, of Barmouth, came to our assistance, and threw a rope on board of us and hauled her hawser, and she towed us up to the town of Milford. Arrived at anchorage about 2.30 p.m.

Shipping and Mercantile Gazette - Saturday 15 January 1876

ABERDARON —Jan 14; NE, light, fine. Put into the bay, 13th, and sailed the same tide—The schooner *Martha and Harriett*, Williams, from Pomaron for Liverpool 11 days. Smacks *Ann Catherine*, Jones, from Abersoch for Woodend and *Catherine*, Marks, from Abersoch for Coonah's Quay.

Shipping and Mercantile Gazette - Wednesday 06 December 1876

ABERDARON— Dec. 5: SSW, boisterous. The *Ann Catherine*, Jones, was driven by the force of the late gale onto Borthor Beach and is beneaped.

Shipping and Mercantile Gazette - Friday 30 March 1877

ABERDARON— March 29: SW, fine. In the bay—The *Ann Catherine*, Jones, from Bardsey Island for Pwllheli.

Shipping and Mercantile Gazette - Wednesday 16 May 1877

ABERDARON—May 15: Easterly, fine. Arrived—The *Ann Catherine*, Jones, from Saundersfoot.

Shipping and Mercantile Gazette - Friday 18 May 1877

ABERDARON— May 17 : SW, fine. The smack *Ann and Catherine*, Jones, beneaped here ; will have wait until next spring tide.

Shipping and Mercantile Gazette - Tuesday 29 May 1877

ABERDARON—May 28: During the last 24 hours it blew a strong gale from SSW with rain at intervals. The smack *Ann and Catherine*, Jones is still here, it did not float this spring.

Shipping and Mercantile Gazette - Wednesday 30 May 1877

ABERDARON—May 29: WSW, boisterous. An oar, with *Mervinia* branded on it, has been picked up on this beach, apparently not long the water. Efforts are being made to launch the smack *Ann and Catherine*.—[See paragraph in S.& M. G. of yesterday.]

The Cambrian News and Merionethshire Standard 11th October 1878

PWLLHELI.

STORM.—Since Sunday, Oct. 6th, the weather has been very wild at this and neighbouring places. Heavy wind followed by cold showers prevailed. At Llanystymdwy, the mason work of a new house was partly blown down. Several vessels had to run in here for shelter. On Tuesday night, October 8th, the smack, *Ann and Catherine* of Carnarvon, broke from her moorings and was washed by a heavy sea to the weir at Abererch beach. Fortunately there were no lives lost.



Fig. 2 Abererch beach

Coflein

The ANN AND CATHERINE was a 31nt wooden smack built in 1839. At time of loss on 10 October 1878, the vessel was owned by W Jones of Treflys, Porthmadog (also the master) The smack was caught at moorings by a south westerly force 10 gale and blown ashore near Pwllheli.

Sources include:

Board of Trade Wreck Return 1878 Appendix Parts I-IV pg93 (159)

Larn and Larn Shipwreck Database 2002

Maritime Officer, RCAHMW, June 2010.

Maes y garnedd

By the mid-19th century the ferry, which still from Penrhyn point, transported slate from quarries in the Panteinon Valley along with lead, copper and manganese from Cyfannedd fawr above Arthog across the estuary to Barmouth whence it was shipped out. With the increase of goods from Barmouth after the 17th century came an increase in demand for ships (and thus an increase in boat yards) at places like Penmaenpool and Borthwnog. On the north side of the estuary and at the eastern end, Maes-y-garnedd was a busy ship-building centre as well as a trading centre for the distribution of goods and merchandise (including flour, oatmeal, beans, rye, timber, bark etc) from Barmouth for local people inland around Dolgellau.

7.0 Analysis

The identification of the correct *Ann and Catherine* was sometimes difficult but by recording possible matches and then critically looking at if they matched confirmed matches I was able to eliminate some possible matches. Where a later match showed the weight of the vessel or the weight of cargo I removed some mistakes. I mistakenly identified Thomas as a master of *Ann and Catherine* but after two years a match showed the vessel was a schooner registered at Amlwch so I deleted the entries. The *Ann and Catherine* with the masters Williams, Owen, Price, Davies, Jones, Rees, Thomas and Hughes at various times were the wrong weight, type vessel or registered at another port. I also found an *Ann and Catherine* working in the Preston, Barrow area without a master's name been given but I found an *Ann and Catherine* registered at Fleetwood so I eliminated the matches. I later found a vessel with the master Davis working from Lancaster but this is the name of the owner of the *Ann & Catherine* registered at Fleetwood. The *Ann and Catherine* without a master's name where the distance involved was large such as the east coast of England or Scotland and beyond I ignored. There was an *Ann Catherine* registered at Caernarvon with the master also Griffiths from 1874 that caused me some confusion but it was sailing to the Baltic, Hamburg & Portugal. The correct vessel was confirmed by the tonnage recorded at Cardiff in 1874. I found a report of *Ann & Catherine*, Jones arriving at Swansea from Catania, Sicily which was puzzling but I then found a *Catherine Ann*, Jones making the same journey and saw the mistake in the report. The *Ann & Catherine* was not issued with an international identification signal so any vessels of the same name recorded passing were not this vessel.

The Lloyds survey for the *Ann and Catherine* when she was completed gives the location for the survey on the dry beach while she was being built.

The tonnage given for the *Ann and Catherine* on the Lloyds survey as 31 2526/3580 tons, 32 tons in LR and MNL, often given as 31 tons in port and 28 tons when advertised for sale in 1862, carrying 50 tons of cargo. In the SMG of 30 July 1872 the masters deposition gives the cargo as 54 tons of slates. When the mast-head, immediately under the rigging, gave way, and broke short off, and everything aloft came down deck with a crash, the topmast breaking and the mainsail splitting in the fall. The weight vessels carried in cargo at this time was not restricted by load lines.

The *Ann and Catherine* was reported beneaped twice in 1876 and 1877, this is when a vessel is unable to sail due to a lack of sufficient depth of water. It may

be caused by taking the ground or being driven aground on a spring tide, with the tides for the following two weeks being lower. On May 28 1877 the *Ann and Catherine* was reported as failed to float on the spring tide at Aberdaron due to a gale. The heights of tides are not only caused by the position of the Sun and moon but also by storms and atmospheric pressure.

I was unable to identify the weir on Abererch beach where the *Ann & Catherine* was reported wrecked, which does not have a river running into it. The river Arfan runs close to it and parallel to it, emptying into the sea at Pwllheli.

I discovered there was another *Ann & Catherine* on the database when I finished this report, reported sunk in Barmouth harbour 25th July 1856. This was the same vessel but it was aground not sunk and the crew were rescued by the RNLI. The cargo was discharged to barges and the vessel recovered (Caernarvon & Denbigh Herald - Saturday 02 August 1856).

The BNA produced most of the reports concerning the *Ann and Catherine* with the WNL the remainder.

The crew lists held at the Gwynedd Archive service, National Archives and National Maritime Museum would prove useful in identifying the masters and crew but are not available on line.

8.0 Conclusions & Recommendations

I have spent about 30 hours on this project with about 90% spent on line and copying newspaper reports. The difficulty in identifying the correct vessel added to the time spent in completing the report.

The date of the loss of the *Ann and Catherine* is given in the Coflein entry as the 10th October 1878 but The Cambrian News and Merionethshire Standard of the 11th October 1878 gives the date as the 8th. If the incident had occurred on the 10th it is unlikely to have appeared in the newspaper dated the 11th.

The project has answered most of my original questions except about the crew, and details of the masters and owners. It also resulted in two entries in the database being combined. The only other research I found on line was the Coflein entry.

There is not a dive site for the *Ann and Catherine* as she was driven off her mooring and washed ashore. She was not carrying any cargo and the master and crew were ashore.

The *Ann and Catherine* was involved in a number of incidents of being driven ashore, the crew being rescued by the RNLi, towed in by another smack disabled and finally breaking away from her mooring and being lost. There is only one deposition on line for being disabled, the remaining incidents lack details. So there is little to provide any further publication.

9.0 References

<https://www.britishnewspaperarchive.co.uk/>

<https://coflein.gov.uk/>

<https://www.google.co.uk/>

<http://www.heneb.co.uk>

<https://hec.lrfoundation.org.uk/>

<https://lifeboatmagazinearchive.rnli.org/>

<https://www.navionics.com/>

<https://newspapers.library.wales/>

<https://en.wikipedia.org/>

Appendices:

Appendix A – Table of Lloyd’s Registers entries for the *Ann & Catherine*

Arethusa B ₂ pt I.B.	A. Baxter	174	Abrdn	1839	J. Ogilby	Aberdn	Abn. Lisbn	6	A	1
		162	O.Lh,&E.							9
Assiduous Sr	J. Vittery	74	Ipswen	1812	S. Vittery	Dartmh	Drt. StUbs	—	Æ	1
		60	Isl&Srprs	39						9
Ann Bk YM. 29	J. Johnson	539	W.ime	1839	Johnson&	Liverpl	Liv. NOrls	4	A	1
		575	Hk.RP, BB &	YP. 7 mo						10
Angelina G d 31 I.B.	Brodersen	113	Holl'd		Peters	Ostend	Lon.Ostend	—	Æ	1
										10
Ann & Catherine Sk I.B.	Williams	32	Brmth	1839	Williams	B'maris	Bar.Ireland	10	A	1
				8 mo						9
Ardent P	RRoberts	80	Nevin	1826	Thomas	B'maris	Bms. Londn	—	Æ	1
			nw.TSds&lrp.	39						10
Ark S	Johnson	198	Sndrld	1839	Forster	Sndrld	Sld.London	9	A	1
		178		10 mo						10
Admiral R -noff Bk	Tobisen	266	Sndrld	1835	Capt&C	Ptrsbrg	Lon,Ptrsbg	10	A	1
			Drp.39							10
Alligator Sr	RWCook	198	Shrhm	1839	Cook&C,	London	Shm, Livrpl	12	A	1
										10

Lloyd's Register of Shipping 1839

In the Supplement

Ann & Catherine, smack built at Barmouth August 1839 using iron bolts, owner and master Williams, registered at Beaumaris, sailing Barmouth to Ireland, classified A1 for 10 years by Lloyds September 1839

1840, 1841, 1842, 1843, 1844 No changes

1845 New survey September still A1, No other changes

1846, 1847, 1848, 1849 No changes

1850 no entry

Appendix B – The Timeline for the *Ann & Catherine*

1839

- October 28 1839 Belfast arrived Ann & Catherine, Williams from Barmouth - Bark
- November 3 1839 Belfast sailed Ann & Catherine, Williams for Dublin – Bark
- November 26 1839 Dublin sailed Catherine, Williams for Liverpool - Grain
- November 30 1839 Holyhead arrived Ann & Catherine, Williams from Dublin
 . for Liverpool
- November 30 1839 Beaumaris put in Ann & Catherine, Williams from Dublin
 . for Liverpool
- December 2 1839 Beaumaris sailed Ann & Catherine, Williams for Liverpool

1840

- w/e July 4 1840 Swansea arrived Ann & Catherine, Williams
- July 21 1840 Beaumaris arrived Ann & Catherine, Williams from Newry
 . for Carnarvon
- October 24 1840 Holyhead remains Ann & Catherine, Williams from Barmouth
 . for Londonderry
- October 30 1840 Donaghadee sailed Ann & Catherine for Londonderry
- w/e November 5 1840 Londonderry arrived Ann & Catherine, Williams from
 . Barmouth – Bark
- November 18 1840 Londonderry sailed Ann & Catherine for Glasgow
- December 30 1840 Runcorn arrived Ann & Catherine, Williams from Glasgow

1841

January 4 1841 Runcorn sailed A & Catherine, Williams for Liverpool

January 18 1841 Caernarvon passed through the strait Ann & Catherine, Williams
· from Liverpool for Barmouth

March 15 1841 Caernarvon passed Ann & Catherine, Williams from Liverpool for
· Barmouth

w/e May 1 1841 Beaumaris cleared out Ann & Catherine, Williams for Barmouth

June 28 1841 Liverpool sailed Ann & Catherine, Williams for Barmouth

w/e October 30 1841 Port Madoc sailed Ann & Catherine, Williams

1842

February 15 1842 Newry sailed Ann & Catherine, Williams for Liverpool

w/e July 30 1842 Milford sailed Ann & Catherine, Williams for Drogheda

1843

January 23 1843 Dartmouth arrived Ann & Catherine from London for Newry ##

May 15 1843 Milford put & sailed Ann & Catherine, Williams from Barrow for
· Swansea

May 17 1843 Mumbles put in & proceeded Ann & Catherine, Williams from
· Barmouth for Swansea

June 7 1843 Drogheda sailed Ann & Cath., Williams for Milford

September 18 1843 Milford sailed Ann & Cathrn, Williams for Drogheda

September 24 1843 Drogheda arrived Ann & Cath., Williams from Milford

1844

February 26 1844 Swansea sailed Ann & Cath, Williams for Drogheda

March 9 1844 Milford sailed Ann & Cath., Williams for Drogheda

March 23 1844 Drogheda arrived Ann & Cath., Williams from Milford

April 27 1844 Swansea sailed Ann & Cath, Williams for Barmouth

To June 21 1844 Swansea arrived Ann & Cath., Williams from Barmouth

July 30 1844 Drogheda arrived Ann & Cath., Williams from Milford

August 27 1844 Barmouth sailed Ann & Cath, Williams for Swansea

October 23 1844 Belfast arrived Ann & Cath., Williams from Barmouth

1845

February 15 1845 Port Penryn, Bangor arrived Ann & Cath., Williams from
. Amwlch

March 11 1845 Barmouth arrived Ann & Cath., Williams from Drogheda

April 25 1845 Drogheda sailed Ann & Cath, Williams for Barmouth

August 7 1845 Swansea arrived Ann & Cath., Williams from Barmouth

October 6 1845 Barmouth sailed Ann & Cath, Williams for Amwlch

1846

February 9 1846 Barmouth sailed Ann & Cath, Williams for Milford

w/e September 5 1846 Cardiff sailed Ann & Catherine, Williams for Drogheda
. -Coal

September 24 1846 Drogheda sailed Ann & Cath, Williams for Barmouth

October 31 1846 Drogheda arrived Ann & Cath., Williams from Milford

1847

May 6 1847 Runcorn sailed Ann & Cath for Liverpool

August 28 1847 Llanelly arrived Ann & Catherine, Williams from Liverpool

1850

April 23 1850 Portmadoc arrived Ann & Catherine, Williams from Barmouth
w/e July 13 1850 Port Penryn, Bangor cleared out Ann & Catherine, Williams
August 27 1850 Pentewan sailed Ann & Cath, Williams for Liverpool

1851

April 15 1851 Rochester arrived Ann & Cath., Williams from Bangor
May 1 1851 Barmouth arrived Ann & Catherine, Williams from Drogheda
w/e May 24 1851 Port Penryn, Bangor arrived Ann & Catherine, Williams
June 12 1851 Barmouth arrived Ann & Catherine, Williams from Drogheda
w/e November 6 1851 Port Penryn, Bangor cleared out Ann & Catherine, Williams
. - Slates
w/e November 20 1851 Port Penryn, Bangor arrived Ann & Catherine, Williams
w/e December 11 1851 Port Penryn, Bangor cleared out Ann & Catherine,
. Williams - Slates

1852

w/e April 30 1852 Port Penryn, Bangor cleared out Ann & Catherine, Williams
. - slates
August 31 1852 Dundalk sailed Ann & Catherine, Williams for Bangor
w/e September 17 1852 Port Penryn, Bangor arrived Ann & Cath., Williams
w/e September 24 1852 Port Penryn, Bangor cleared out Ann & Catherine,
. Williams - slates

1853

w/e January 28 1853 Barmouth sailed Ann & Catherine, Williams
February 3 1853 Drogheda sailed Ann & Cath, Williams for Barmouth
March 30 1853 Barmouth arrived Ann & Catherine, Williams

April 13 1853 Barmouth sailed Ann & Catherine, Williams

w/e May 27 1853 Barmouth arrived Ann & Catherine, Williams

w/e June 24 1853 Port Penryn, Bangor cleared out Ann & Catherine, Williams
 . - slates

w/e July 29 1853 Port Penryn, Bangor arrived Ann & Catherine, Williams

w/e August 5 1853 Port Penryn, Bangor cleared out Ann & Catherine, Williams
 . - slates

w/e October 1 1853 Port Penryn, Bangor arrived Ann & Catherine, Williams

October 8 1853 Port Penryn, Bangor cleared out Ann & Catherine, Williams
 . - slates

w/e December 3 1853 Port Penryn, Bangor arrived Ann & Cath., Williams

w/e December 10 1853 Port Penryn, Bangor cleared out Ann & Catherine,
 . Williams - slates
 .

w/e December 24 1853 Port Penryn, Bangor arrived Ann & Cath., Williams

1854

April 13 1854 Caernarvon arrived Ann & Catherine, Williams

w/e September 23 1854 Port Penryn, Bangor arrived Ann & Catherine, Williams

w/e October 7 1854 Port Penryn, Bangor cleared out Ann & Catherine, Williams
 . - slates

November 3 1854 Barmouth arrived Ann & Cath, Williams from Drogheda

w/e November 18 1854 Port Penryn, Bangor arrived Ann & Cath., Williams

December 6 1854 Dublin Ann & Catherine for Bangor – Potatoes

w/e December 16 1854 Port Penryn, Bangor arrived Ann & Catherine, Williams

1855

w/e January 20 1855 Port Penryn, Bangor cleared out Ann & Catherine, Williams
 . - slates

w/e May 12 1855 Port Penryn, Bangor cleared out Ann & Catherine, Williams
· - slates

w/e June 16 1855 Port Penryn, Bangor arrived Ann & Catherine, Williams

w/e June 23 1855 Port Penryn, Bangor arrived Ann & Catherine, Williams

w/e June 23 1855 Port Penryn, Bangor cleared out Ann & Catherine, Williams
· - slates

July 12 1855 Port Penryn, Bangor sailed Ann & Catherine, Williams for London
· - slates

w/e September 1 1855 Port Penryn, Bangor arrived Ann & Catherine, Williams

1856

w/e January 26 1856 Port Penryn, Bangor cleared out Ann & Catherine, Williams
· - slates

w/e May 17 1856 Port Penryn, Bangor arrived Ann & Catherine, Williams

w/e July 12 1856 Port Penryn, Bangor arrived Ann & Catherine, Williams

July 24 1856 Off Barmouth arrived Smack Ann & Catherine from Drogheda
· - Timber

July 25 1856 Barmouth crew of Ann & Catherine of Barmouth rescued by RNLI
· lifeboat from vessel which was aground

1857

w/e January 24 1857 Barmouth sailed Ann & Catherine, Williams

w/e August 15 1857 Portmadoc arrived Ann & Catherine, Williams

August 20 1857 Portmadoc sailed Ann & Catherine, Williams

1858

w/e February 27 1858 Port Penryn, Bangor cleared out Ann & Catherine, Williams
· - slates

w/e May 29 1858 Port Penryn, Bangor cleared out Ann & Catherine, Williams
· - slates

w/e July 24 1858 Port Penryn, Bangor cleared out Ann & Catherine, Williams
· - slates

w/e August 21 1858 Port Penryn, Bangor arrived Ann & Catherine, Williams

w/e October 2 1858 Port Penryn, Bangor cleared out Ann & Catherine, Williams
· - slates

1859

w/e June 18 1859 Port Penryn, Bangor cleared out Ann & Catherine, Williams
· - slates

w/e December 17 1859 Port Penryn, Bangor arrived Ann & Catherine, Williams

1860

January 31 1860 Kingstown sailed Ann & Catherine for Barmouth

1861

June 15 1861 Barrow arrived Ann & Catherine, Pritchard from Amlwch

August 8 1861 Tenby arrived Ann & Catherine, Pritchard for Ipswich – leaky

October 4 1861 Garston arrived Ann & Catherine 31, Pritchard from Portmadoc

October 23 1861 Barrow sailed Ann & Catherine, Pritchard for Britonferry

1862

January 17 1862 Barrow arrived Ann & Catherine, Pritchard from Dublin - ballast

January 21 1862 Barrow sailed Ann & Catherine, Pritchard for Swansea

March 13 1862 Amlwch arrived Ann & Catherine, Pritchard from Pembury

April 9 1862 Barrow arrived Ann & Catherine, Pritchard from Amlwch

May 9 1862 Waterford arrived Ann & Catherine, Pritchard from Barrow - ballast
 June 4 1862 Liverpool, Wellington Dock arrived Ann & Catherine, Pritchard
 . from Neath
 June 5 1862 Liverpool sailed Ann & Catherine, Pritchard for Peel
 August 15 1862 Dublin arrived Ann & Catherine, Pritchard from Llanelly
 September 16 1862 Waterford arrived Ann & Catherine, Pritchard from Neath
 . - coals
 October 29 1862 Ardrossan arrived Ann & Catherine, Pritchard from Greenock
 November 5 1862 Ardrossan sailed Ann & Catherine, Pritchard for Britonferry
 December 4 1862 Holyhead sailed Ann & Catherine, Pritchard for Liverpool

1863

April 27 1863 Barrow arrived Ann & Catherine, Pritchard from Kingstown
 April 29 1863 Barrow sailed Ann & Catherine, Pritchard for Port Talbot
 June 5 1863 Glasgow sailed Ann & Cath., Pritchard for Dublin
 June 10 1863 Dublin arrived Ann & Catherine, Pritchard from Glasgow
 June 20 1863 Barrow arrived Ann & Catherine, Pritchard from Dublin
 June 23 1863 Barrow sailed Ann & Catherine, Pritchard for Britonferry
 July 6 1863 Neath arrived Ann & Catherine, Pritchard from Barrow
 July 16 1863 Milford put in Ann & Catherine, Pritchard from Britonferry for Belfast
 . Leaking
 August 1 1863 Ayr arrived Ann & Catherine, Pritchard from Belfast
 August 6 1863 Ayr sailed Ann & Catherine, Pritchard for Waterford

1865

April 17 1865 Liverpool, Stanley Dock arrived Ann & Catherine 31, Pritchard
 . from Barmouth
 w/e May 27 1865 Portmadoc sailed Ann & Catherine, Pritchard for Garston

May 30 1865 Liverpool, Garston dock arrived Ann & Catherine 31, Pritchard
 . from Portmadoc

June 15 1865 Portmadoc arrived Ann & Catherine, Pritchard from Barmouth

July 27 1865 Portinllaen arrived Ann & Catherine, Pritchard from Newport

July 27 1865 Portinllaen sailed Ann & Catherine, Pritchard for Llanhawn

August 24 1865 Portmadoc arrived Ann & Catherine, Pritchard from Barmouth

w/e September 9 1865 Portmadoc sailed Ann & Catherine, Pritchard for Newport

1866

w/e February 24 1866 Portmadoc sailed Ann & Catherine, Pritchard for Liverpool

February 28 1866 Liverpool cleared out Ann & Catherine, Pritchard for Portmadoc

March 15 1866 Portmadoc arrived Ann & Catherine, Pritchard from Liverpool

May 1 1866 Liverpool sailed Ann & Catherine, Pritchard for Greenock

May 25 1866 Holyhead arrived Ann & Catherine, Pritchard from Barmouth

May 28 1866 Liverpool arrived Ann & Catherine, Pritchard from Barmouth

w/e June 25 1866 Portmadoc arrived Ann & Catherine, Pritchard from Barmouth

July 21 1866 Garston arrived Ann & Catherine 31, Pritchard from Liverpool

September 5 1866 Holyhead arrived Ann & Catherine, Pritchard from Runcorn
 . for Barmouth

October 31 1866 Portmadoc entered loading Ann & Catherine, Pritchard
 . for Bristol

1867

w/e March 2 1867 Portmadoc sailed Ann & Catherine, Pritchard

April 10 1867 Portmadoc arrived Ann & Catherine, Pritchard from Barmouth

April 10 1867 Portmadoc entered loading Ann & Catherine, Pritchard for
 . Porthcawl

w/e April 20 1867 Portmadoc arrived Ann & Catherine, Pritchard from Barmouth
 April 26 1867 Portmadoc sailed Ann & Catherine, Pritchard for Porthcawl
 May 12 1867 Cardiff sailed Ann & Catherine, Pritchard for Portmadoc
 w/e May 25 1867 Portmadoc arrived Ann & Catherine, Pritchard from Cardiff
 w/e August 3 1867 Portmadoc sailed Ann & Catherine, Pritchard for Liverpool
 September 4 1867 Carnarvon arrived Ann & Catherine, Pritchard from Barmouth
 w/e September 21 1867 Portmadoc arrived Ann & Catherine, Pritchard from
 . Carnarvon
 w/e November 20 1867 Portmadoc arrived Ann & Catherine, Pritchard
 w/e November 30 1867 Portmadoc arrived Ann & Catherine, Pritchard

1868

February 11 1868 Neath, Britonferry arrived Ann & Catherine, Jones from
 . Middlesbrough
 February 24 1868 Neath, Britonferry sailed Ann & Catherine, Jones for Bangor
 March 6 1868 Beaumaris arrived Ann & Catherine, Jones from Belfast
 March 13 1868 Liverpool cleared out Ann & Catherine, Jones for Barmouth
 w/e April 18 1868 Portdinllaen sailed Ann & Catherine, Jones
 May 22 1868 Liverpool cleared out Ann & Catherine, Jones for Mochra
 September 11 1868 Kingstown arrived Ann & Catherine from Liverpool – Coal
 December 11 1868 Bangor arrived Ann & Catherine from Poole for Runcorn
 . – damaged

1869

w/e June 26 1869 Mochras sailed Ann & Catherine, Jones for Liverpool
 June 25 1869 Liverpool cleared out Ann & Catherine, Jones for Mochras
 W/e July 17 1869 Mochras arrived Ann & Catherine, Jones from Liverpool
 August 23 1869 Liverpool arrived Ann & Catherine, Jones from Mochras

October 11 1869 Liverpool arrived Ann & Catherine, Jones from Mochras

October 15 1869 Liverpool cleared out Ann & Catherine, Jones for Mochras

December 13 1869 Mochras arrived Ann & Catherine, Jones from Liverpool

December 25 1869 Portmadoc arrived Ann & Catherine

1870

March 6 1870 Dublin arrived Ann & Catherine from Runcorn

March 26 1870 Portmadoc sailed Ann & Catherine, Jones

May 3 1870 Gravesend arrived Ann & Catherine from Bangor

November 1 1870 Belfast arrived Ann & Catherine from Glasgow

December 13 1870 Drogheda sailed Ann & Catherine for Bangor

1871

January 11 1871 Pill passed for Bristol Ann & Catherine from Cardiff

May 9 1871 Portmadoc arrived Ann & Catherine from Barmouth

w/e May 20 1871 Portmadoc sailed Ann & Catherine, Ellis

June 28 1871 Aberdaron sailed Ann & Catherine, Ellis from Portmadoc
 . for Greenock

June 30 1871 Greenock arrived Ann & Catherine, Ellis from Portmadoc

November 28 1871 Swansea arrived Ann & Catherine, Ellis from Dublin

December 2 1871 Belfast sailed Ann & Catherine for Garston

December 25 1871 Barmouth windbound Ann & Catherine, Griffiths for Liverpool

1872

January 17 1872 Holyhead put in Ann & Catherine from Garston for Kingstown
 . – To stop a leak

March 11 1872 Liverpool arrived Ann & Catherine, Griffiths from Barmouth

March 18 1872 Liverpool cleared out Ann & Catherine for Barmouth

May 11 1872 Bridgewater arrived Ann & Catherine from Barmouth

July 14 1872 Portmadoc arrived Ann & Catherine from Cardiff for Cork

July 24 1872 Portmadoc sailed Ann & Catherine, Griffiths for Newport, Mon-slates

July 26 1872 Milford towed in Ann & Catherine, Griffiths for Newport – damaged

September 21 1872 Milford arrived Ann & Catherine

December 7 1872 Portdinorwic sailed Ann & Catherine, Griffith for Runcorn

December 30 1872 Caernarvon sailed Ann & Catherine, Griffith for Port Dinorwic

1873

January 21 1873 Portmadoc arrived Ann & Catherine, Griffiths from Drogheda

March 17 1873 Liverpool sailed Ann & Catherine for Port Dinorwic

May 23 1873 Pill passed for Bristol Ann & Catherine from Cork

May 30 1873 Silloth sailed Ann & Catherine, Griffiths for Caernarvon

June 6 1873 Bristol, Pill passed Ann & Catherine for Llanelly

June 25 1873 Newport, Mon sailed Ann & Catherine, Griffiths for Milford

October 5 1873 Newport, Mon. arrived Ann & Catherine, Griffiths from Portmadoc

October 20 1873 Newport sailed Ann & Catherine, Jones for Caernarvon

1874

June 10 1874 Liverpool cleared out Ann & Catherine for Bangor

June 28 1874 Newport, Mon. Ann & Catherine, Griffiths from Portmadoc

July 7 1874 Newport, Mon. sailed Ann & Catherine, Griffiths for Abersoch

September 3 1874 Abersoch put in Ann & Catherine, Griffiths

October 3 1874 St Tudwall's Roads put in Ann & Catherine, Griffiths for Cardiff's

October 24 1874 Glamorgan Canal, Cardiff arrived Ann & Catherine 31, Griffiths
from Portmadoc - slates

October 30 1874 Penarth, Cardiff arrived Ann & Catherine 31, Griffiths
· from Cardiff – Light

November 2 1874 Penarth sailed Ann & Catherine for Caernarvon

November 18 1874 Belfast sailed Ann & Catherine for Portmadoc

November 23 1874 Liverpool arrived Ann & Catherine from Bangor

December 24 1874 Newry arrived Ann & Catherine, Jones from Caernarvon

1875

February 9 1875 Carnarvon sailed Ann & Catherine for Barrow

February 19 1875 Barrow in Furness sailed Ann & Catherine for Carnarvon

March 2 1875 Liverpool cleared out Ann & Catherine for Cork

w/e May 12 1875 Portmadoc arrived Ann & Catherine, Jones from Barmouth

May 8 1875 Bangor, NW sailed Ann & Catherine, Jones for Glasgow

May 28 1875 Glasgow sailed Ann & Catherine, Jones for Bangor

July 12 1875 Westport sailed Ann & Catherine, Jones seeking

August 4 1875 Portmadoc sailed Ann & Catherine, Jones for Llanaelhaiarn

September 3 1875 Pwllheli sailed Ann & Catherine, Jones for Portmadoc

w/e October 13 1875 Portmadoc arrived Ann & Catherine, Jones from Pwllheli

1876

January 13 1876 Aberdaron put in smack Ann & Catherine, Jones from Abersoch
· for Woodend

April 1 1876 Britonferry sailed Ann & Catherine, Jones for Friars

June 10 1876 Aberdaron put in windbound Ann & Catherine, Jones from
· BritonFerry for Abersoch

June 23 1876 Bristol, Pill passed Ann & Catherine from Bangor

June 30 1876 Liverpool Canning dock Ann & Catherine 31, Jones from Pwllheli

August 30 1876 Aberdaron arrived Ann & Catherine, Jones from Port Talbot

October 4 1876 Carnarvon sailed Ann & Catherine for Dublin

November 24 1876 Falmouth sailed Ann & Catherine for Ipswich

December 5 1876 Aberdaron driven on beach Ann & Catherine, Jones - beneaped

1877

January 24 1877 Holyhead arrived Ann & Catherine, Jones from Ipswich for
· Londonderry

March 29 1877 Aberdaron arrived Ann & Catherine, Jones from Bardsey Island
· for Pwllheli

April 23 1877 Penarth Roads, Cardiff arrived Ann & Catherine

May 8 1877 Britonferry sailed Ann & Catherine for Abryrn

May 15 1877 Aberdaron arrived Ann & Catherine, Jones from Saundersfoot

July 23 1877 Aberdaron sailed Ann & Catherine, Jones for Porthor

July 29 1877 Aberdaron sailed Ann & Catherine, Jones for Bardsey Island

October 11 1877 Ayr arrived Ann & Catherine from Beaumaris

1878

January 20 1878 Bristol, Pill passed Ann & Catherine from Bangor

February 20 1878 Saltney, Chester arrived Ann & Catherine from Bangor

March 12 1878 Silloth sailed Ann & Catherine for Newry

March 26 1878 Caernarvon arrived Ann & Catherine, Jones from Newry

May 29 1878 Port Dinorwic sailed Ann & Catherine for Greenock

July 12 1878 Aberdaron sailed Ann & Catherine for Pwllheli

August 29 1878 Dublin arrived Ann & Catherine from Portmadoc

October 8 1878 Portmadoc blown off mooring and wrecked Ann & Catherine

Appendix C – Lloyds surveyors report for Ann & Catherine

No. 19 Survey held at Bermouth Date 10 September 1839
 on the Smack Ann and Catherine Master John Williams
 Tonnage 31 3/4 Built at Meysons Bermouth River When built 12 August 1839
 By whom built by Griffith Davies Owners John Williams John Davies & Co
 Port belonging to Beaumaris Destined Voyage Strangford, Ireland
 If Surveyed Afloat or in Dry Dock one the dry Dock

10
 10

Length aloft	42	feet	inches	Extremity Breadth	15	feet	inches	Depth of Hold	7	feet	inches
Scantlings of Timber.				Thickness of Plank.							
Timber and Space	each	16	inches	Keel to Bilge	2	inches	Foot Waling	2 1/2	inches		
Floors	sided	6	Moulded	Bilge Planks	4	Bilge Planks	2 3/4	Ceiling in Flat	2		
1 st Footbooks		6		Bilge to Wales	1 3/4	Ditto Bilge to Clamp	1 3/4	Hold Beam Clamps			
2 nd Ditto		5 1/2		Wales	3	Deck Beam Ditto	3	Ceiling 'twist Decks			
3 rd Ditto		5 1/2		Top-sides	1 1/2	Hold Beam Shells		Deck Beam Ditto			
Top Timbers		5		Sheer Strakes	2 1/2	Upper Deck	2				
Deck Beams	N ^o . of	9		Plank Sheers	2						
Hold Beams	N ^o . of	2		Water-Ways	2						
Keel		7		Upper Deck	2						
Kelsons		19									
Copper. Iron				Size of Bolts in Fastenings.				Iron.			
Heel-Knee, and Dead Wood abaft		7/8		Bolts thro' the Bilge and Foot Waling	3/4	Hold Beam	2 1/2				
Scarphs of Keel	N ^o . none			Butt End Bolts	1/2	Deck Beam	1 1/2				
Floor Timber Bolts		7/8		Lower Pintle of the Rudder	1 1/2						
Kelson ditto		7/8									
Transoms and throats of Hooks		3/4									
Arms of Hooks		3/4									

Timbering.—The Space between the Floor Timbers and Lower Footbooks in this Vessel is 2 Inches. The Space between the Top-timbers is 3 Inches. The Stern, Stern Post, are composed of British Oak the Transoms, Aprons, Knight Heads, Hawse Timbers, of British Oak and are quite free from all defects. The Floors and first Footbooks are composed of 30 30 Timber. The other Footbooks and Top Timbers of 30 30. The Shifts of the first and second Footbooks are not less than 2 feet 4 inch N. B. When less than prescribed by the Rule, state how many. The rest of the Shifts of the Frame are not left. The Frame is well squared from the first Footbook Heads upwards, and neatly free from sap, and from thence downwards, the frame is well squared. The alternate Frames are all bolted together. N. B. If not, state how bolted. The Butts of the Timbers are quite close together; their thickness not less than 1/3 of the entire moulding at that place. The Frame is well checked with a Butt at each end of the cheek. The Main Kelson is composed of British Oak and the False Kelson of British Oak. The Scarphs of the Kelsons are not less than feet inches. Main kelson is one piece. The Deck and Hold Beams are composed of British Oak.

Planking Outside.—From the Keel to the first Footbook Heads the Plank is composed of American Pine. From the first Footbook Heads to the Light Water Mark of British Oak. From the Light Water Mark to the Wales of 5 30 30. The Wales and Black-strakes are of British Oak. The Top-sides of British Oak. The Sheer-strakes and Plank-sheers of 30 30. The Water-ways of 30 30. The Decks of American Red Pine State of . The Shifts of the Planking are not less than 3 Feet 6 Inches. N. B. If less than prescribed by the Rule, state whether general or partial, and if partial, in what part of the Ship. The Planking is wrought between .

Planking Inside.—The Limber-strakes are composed of British Oak the Bilge Planks of British Oak. The Ceiling, Lower Hold, of British Oak Between Decks of . Shelf Pieces of Clamps of British Oak.

Fastenings.—To Hold Beams British Oak knees. Deck Beams 30 30 4 1/2 inches diameter & Iron Bolts of diameter. Number of Breasthooks Three Pointers Crutches . Butts End Bolts are of Iron in the Bottom, and a Bolt in each Butt End through and clenched. Bilge and Footwaling well bolted through and clenched. General Quality of Workmanship Fair & well wrought.

We certify that the preceding is a correct description of the above-named Vessel.
 Builder's Name Griffith Davies
 Surveyor's Name John Jones

C. F. SEYFANG, PRINTER, FARRINGTON STREET, LONDON.

Her Masts, Yards, &c. are in _____ condition, and sufficient in size and length.

She has SAILS.		CABLES, &c.		ANCHORS, and their weights.	
N ^o .		Fathoms.		Inches.	N ^o .
1	Fore Sails,	105	Chain	1 1/2	2
	Fore Top Sails,	70	Hempen Stream Cable	6	1
<i>Gibson</i> 2	Fore Topmast Stay Sails,		Hawser		1
	Main Sails,		Towlines		
<i>Goff</i> 1	Main Top Sails,	60	Warp	3	
	and 4 Square sail		All of the best quality.		

Her Standing and Running Rigging all sufficient in size and Excellent in quality.

She has One Long Boat and _____

The present state of the Windlass is _____ Capstan _____ and Rodder _____

General Remarks—Statement and Date of Repairs.

I have had the opportunity of seeing this vessel very often during the time of her being building—Her frame as well as her In and Outside Planks, are not very heavy, but remarkably good and free from defects—Her Sails and Rigging are of the first quality, and her workmanship is good—

If Sheathed, Doubled, Felted, or Coppered _____ When last done _____

I am of opinion this Vessel should be Classed 10-A-1

The Amount of the Fee£ / / : is received by me, *John Jones*
Special£ : :

Committee's Minute 11 Oct. 1850

Character assigned 10 Years S.P.

Appendix D – Ports and other Locations

Aberdaron is a former fishing village at the western tip of the Llŷn Peninsula in the Welsh county of Gwynedd. It lies 15 miles (24km) west of Pwllheli and 33 miles (54km) south west of Caernarfon. In the 18th and 19th centuries it developed as a shipbuilding centre and port. The mining and quarrying industries became major employers, and limestone, lead, jasper and manganese ("Mango") were exported. There are the ruins of an old pier running out to sea at Porth Simdde, which is the local name for the west end of Aberdaron Beach

Ayr is a town situated on the southwest coast of Scotland

Barrow in Furness – Lancashire, now Cumbria. In 1846 the building of the railway transformed village by enabling transport of iron ore and slate to town. Smelted iron to produce steel, used to build Naval vessels. Export plate bars

Briton Ferry – town, Neath Port Talbot, Wales, it is on the mouth of the River Neath, where it enters Swansea Bay,

Donaghadee is a small town in County Down, Northern Ireland. It lies on the northeast coast of the Ards Peninsula, about 18 miles east of Belfast and about six miles south east of Bangor.

Drogheda is an industrial and port town in County Louth on the east coast of Ireland, 56 km (35 miles) north of Dublin.

Duddon (Duddon bridge) in the Lake District National Park in Cumbria, England.

Garston – On Mersey river above Liverpool

Pentewan is a coastal village and former port in south Cornwall, near St Austell and china clay mining.

Porthdinllaen is a small coastal village near Morfa Nefyn, Gwynedd, on the north coast of the Llŷn peninsular. The headland forms a natural harbour that affords protection from the prevailing westerly winds and Porthdinllaen became important as a harbour of refuge

Runcorn – on Mersey River and Manchester ship canal, exports salt

Westport is a town in County Mayo in Ireland. It is at the south-east corner of Clew Bay, an inlet of the Atlantic Ocean on the west coast of Ireland.

Appendix E Mercantile Navy List

Mercantile Navy List, 1865, page 23 Ship: ANN Image source: [clip](#) Crew List Index Project

Year	1865	GO	Page	23	GO	Notes	Search again
2046	Ann Wilson, Shields, South	H.M.N.J	432	..	R. Wilson, King Street, South Shields.		
37982	Ann and Alice, Yarmouth. N.S.	S.H.G.C	309	..	Abraham M. Hatfield, Yarmouth, N.S.		
3189	Ann and Bell, Belfast	H.S.G.N	48	..	Eliza Thomson, Island Mageo.		
28761	Ann and Betsey, Aberystwith	Q.B.T.J	26	..	Thomas Lewis, Aberystwith.		
10611	Ann and Catherine, Beaumaris	N.W.B.V	68	..	Humphrey Williams, Bangor, Carnarvonshir		
24255	Ann and Catherine, Beaumaris	J.M.C.H	71	..	J. Hughes, Holyhead.		
12082	Ann and Catherine, Carnarvon	M.K.G.B	32	..	(b) John Williams, Dolgelly, Merioneth.		
6020	Ann and Catherine, Fleetwood	K.J.H.Q	38	..	John Davis, Lytham, Lancaster.		
52521	Ann and Catherine, Carnarvon	L.K.H.J	25	..	Owen Barlow, Carnarvon.		
18061	Ann and Catherine, Goole	L.T.Q.C	59	..	Thomas Easton, Nottinghamly, Yorkshire.		
9577	Ann and Elizabeth, Jersey	M.B.K.W	12	..	John Pallot, Jersey.		
9685	Ann and Elizabeth, Colchester	K.S.T.C	17	..	Frederick Ruffin, Brightlingsea, Essex.		
14001	Ann and Elizabeth, John's, Newfoundland	..	93	..	Warren Brotherton, St. John's Newfoundland		
15770	Ann and Elizabeth, Aberystwith	M.R.B.H	68	..	Anne Rees, Portmadoc St., Aberayron.		
15302	Ann and Elizabeth, Barnstaple	J.K.L.H	36	..	Wm. Tamplin, Barnstaple.		
16425	Ann and Elizabeth, Beaumaris	..	25	..	Evan Evans, Victoria Street, Bangor.		
11477	Ann and Elizabeth, Fowey	..	87	..	R. Tregaskes, Fowey, Cornwall.		
43787	Ann and Elizabeth, Goole	..	43	..	G. Strickland, Snaith, Yorkshire.		
10618	Ann and Elizabeth, Liverpool	..	52	..	John Simpson, Runcorn.		
19205	Ann and Elizabeth, Padstow	..	40	..	Robert Williams, Avery, Padstow.		
5616	Ann and Elizabeth, Portsmouth	..	21	..	John Young, Portsmouth.		

1866 No changes

1867 Owner now Lewis Griffiths, Rhaddall, Merioneth

1868, 1869, 1870 No changes

1872 Added to record vessel is a smack built 1839 at Maesgarneidd, Merioneth
 . - No other changes

1873 Not on line

1874, 1875 No changes

1876 Owner now William Jones, Mount Farm, nr Portmadoc





1877 Address enlarged to Mount Farm, Treflys, Portmadoc, Carnarvonshire

1878, 1879 No changes

1880 No record

Appendix F Crew Lists Index

Crew lists 1857 to 1860 in BT 98 at TNA

Year	ON Range	TNA reference
1857	12081-12170	 BT98/4896
1858	12021-12100	 BT98/5225
1859	12041-12105	 BT98/5799
1860	12016-12085	 BT98/6483

Please bear in mind that these are official number **ranges** - there is no guarantee that a particular official number is included in that box.

Click the TNA reference to look up the TNA catalogue for that year. This will give details of how to order copies of the documents they hold.


Images of these documents are also available online on FamilySearch, though only at LDS Church Family History Centres or Affiliate Libraries. For details of how to do this, click [here](#)




Crew lists for official number 12082

[Notes](#)[Previous](#)

Crew lists from 1861 onwards

Ship	Year	Port	Archive	Archives reference/link	Transcript
	1861		The National Archives	 BT 99/29	
ANN & CATHERINE	1862		National Maritime Museum		
ANN & CATHERINE	1863	Caernarfon	Gwynedd Archives Service		
ANN & CATHERINE	1864	Caernarfon	Gwynedd Archives Service		
ANN & CATHERINE	1865		National Maritime Museum		
ANN & CATHERINE	1866	Caernarfon	Gwynedd Archives Service		
ANN & CATHERINE	1867	Caernarfon	Gwynedd Archives Service		

ANN & CATHERINE	1868	Caernarfon	Gwynedd Archives Service
ANN & CATHERINE	1869	Caernarfon	Gwynedd Archives Service
ANN & CATHERINE	1870	Caernarfon	Gwynedd Archives Service
	1870		Maritime History Archive 
ANN & CATHERINE	1871	Caernarfon	Gwynedd Archives Service
ANN & CATHERINE	1872	Caernarfon	Gwynedd Archives Service
ANN & CATHERINE	1873	Caernarfon	Gwynedd Archives Service
ANN & CATHERINE	1874	Caernarfon	Gwynedd Archives Service
	1875		National Maritime Museum ?
ANN & CATHERINE	1876	Caernarfon	Gwynedd Archives Service
ANN & CATHERINE	1877	Caernarfon	Gwynedd Archives Service
ANN & CATHERINE	1878	Caernarfon	Gwynedd Archives Service