

**Welsh Wreck Web Research Project**  
**(North Cardigan Bay)**  
**On-line research into the wreck of the:**  
***Antelope***



*A Dandy in Newquay Harbour*

Report compiled by:

**Graeme Perks**

Report Title:

**Welsh Wreck Web Research Project  
(North Cardigan Bay)  
On-line research into the wreck of the:  
*Antelope***

Compiled by:

**Graeme Perks**  
graperks@aol.com  
Sutton Coldfield  
UK

On behalf of:

**Nautical Archaeology Society**  
Fort Cumberland  
Fort Cumberland Road  
Portsmouth  
PO4 9LD  
Tel: +44 (0)23 9281 8419  
E-mail: [nas@nauticalarchaeologysociety.org](mailto:nas@nauticalarchaeologysociety.org)  
Web Site: [www.nauticalarchaeologysociety.org](http://www.nauticalarchaeologysociety.org)

Managed by:

**Malvern Archaeological Diving Unit**  
17 Hornyold Road  
Malvern  
Worcestershire  
WR14 1QQ  
Tel: +44 (0)1684 574774  
E-mail: [MADUdiving@gmail.com](mailto:MADUdiving@gmail.com)  
Web Site: [www.madu.org.uk](http://www.madu.org.uk)

Date:

**April 2021**

Report Ref:

***Leave blank***

## **1.0 Abstract**

The “www Research Project” is about, discovering by on line research details of ships, on the MADU data base of wrecks of North Wales, the circumstances of their loss, details of the owners and crew, the cargo carried and their history.

Antelope was built in 1868 at New Quay as a smack of 29 tons by Evans and converted to a dandy in 1889. Antelope traded mainly between South and North Wales with voyages also to Ireland. Antelope mainly carried coal to the New Quay area. In 1885 the crew were assisted by the RNLI at Porthdinllaen when in difficulty in a storm.

In 1893 after discharging coal at Cwn Tudy beach near New Quay, Cardiganshire Antelope missed her stays leaving and drifted against the rocks, being wrecked. The crew climbed over the rocks to safety.

## 2.0 Index

<b>2.1 Table of Contents</b>	<b>Page No.</b>
<b>1.0 Abstract</b> -----	3
<b>2.0 Index</b> -----	4
2.1 Table of Contents	4
2.3 List of Pictures	5
2.4 Contributors	5
2.5 Abbreviations	5
<b>3.0 Introduction</b> -----	6
<b>4.0 Background</b> -----	7
<b>5.0 Research Methodology</b> -----	9
<b>6.0 Results</b> -----	10
<b>7.0 Analysis</b> -----	19
<b>8.0 Conclusions &amp; Recommendations</b> -----	21
<b>9.0 References</b> -----	22
 <b>Appendices:</b>	
<b>Appendix A – Lloyds Register Entries for Antelope</b> -----	23
<b>Appendix B – Timeline for Antelope</b> -----	25
<b>Appendix C – Locations of Ports of Call</b> -----	48
<b>Appendix D – Mercantile Navy List</b> -----	53
<b>Appendix E – Crew Lists</b> -----	55
<b>Appendix F – Appropriation book entry</b> -----	70

**2.3 List of Pictures****Page No.**

Front Cover: A Dandy in Newquay Harbour-----	1
Fig. 1 Cwn Tudy Beach -----	17
Fig. 2 Map of Ireland showing Ports -----	50
Fig. 3 Map of Wales showing Ports -----	51
Fig. 4 Map of United Kingdom showing Ports -----	52

**2.4 Contributors**

Madu

**2.5 Abbreviations**

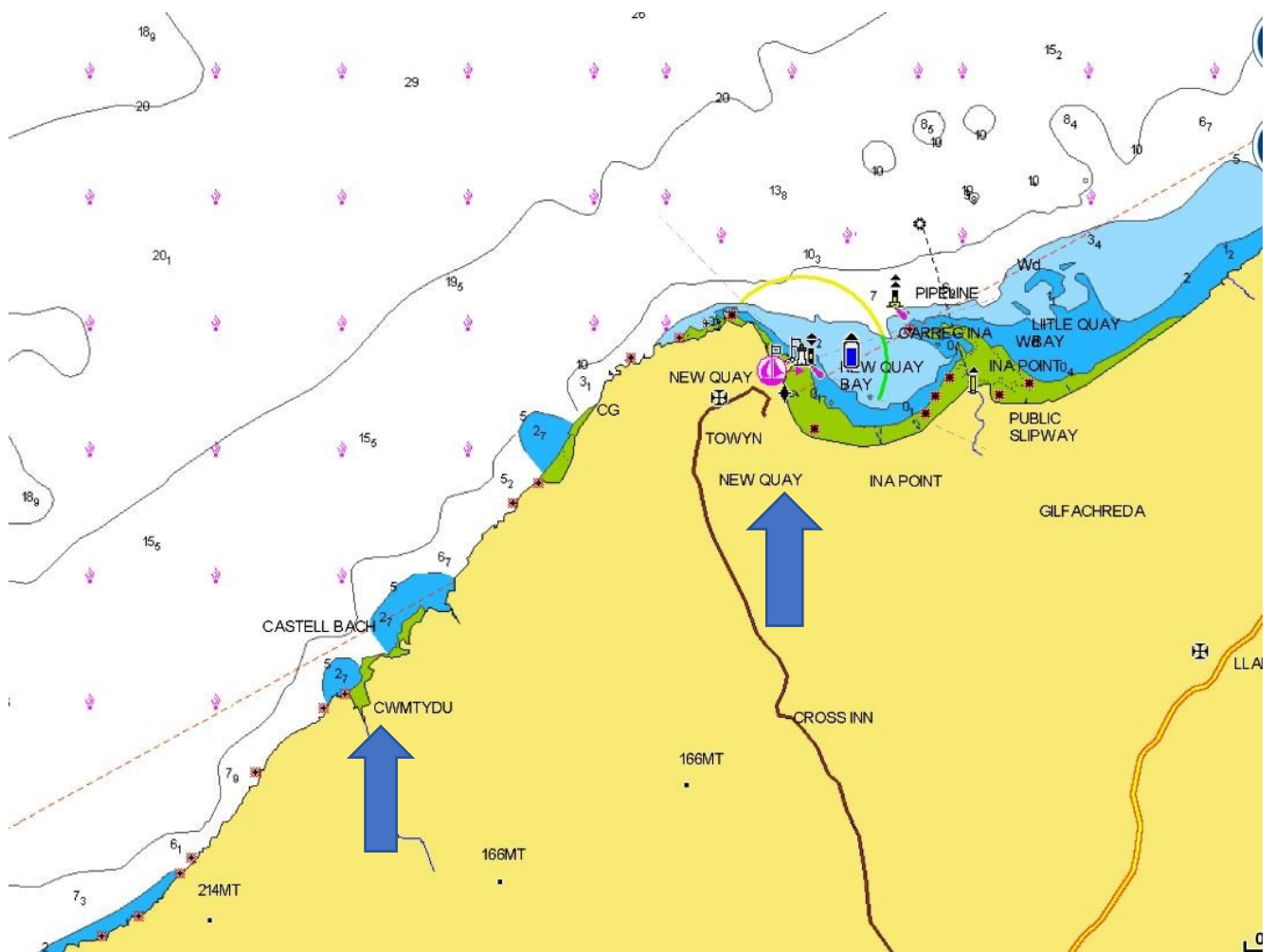
LR	Lloyds Register of shipping
BNA	British Newspaper Archives
MADU	Malvern Archaeological Diving Unit
MNL	Mercantile Navy List
NAS	Nautical Archaeology Society
NAW	National Archives of Wales
NPRN	National Primary Resource Number
OS	Ordnance Survey
RNLI	Royal National Lifeboat Institution
WNL	Welsh Newspapers on Line
w/e	Week ending

### **3.0 Introduction**

1. I selected Antelope to research because I saw she was a ketch of 29 tons and wished to see how much information I could find about her and I wanted to find out what happened to her and I wanted to discover:
2. The dimensions of the vessel, Who the builder was and when she was built and any other information available about her.
3. Information concerning the voyages, cargo's, any events affecting the vessel, details of its masters, crew and owners.
4. To find out the sequency of events leading up to the loss of the vessel, whenever that was and the event in 1893.
5. To discover the cause of the event in 1893 and if the vessel survived, the cause of its eventual loss.
6. The events that happened after the incident in 1893 and up to and after its loss if it survived.
7. If there were any previous research of the vessel for the 1893 incident and its story.
8. If there was a wreck site for Antelope and if it had been identified, dived and recorded.
9. If any salvage of the vessel and its cargo had been carried out
10. If any previous reports had been produced for the Antelope.

### 4.0 Background

When I started this research it was reported that Antelope was a wooden ketch of 29 tons and was involved in an incident on 26<sup>th</sup> August 1893 at New Quay, Cwmtudu, Cardiganshire.



Cwn Tydu and Newquay



## 5.0 Research Methodology

I used a Microsoft Pixel laptop with access to my home internet running windows 10 operating system. I also used my Apple I pad for research when I was away from the laptop and to assist in transcribing reports from the British newspaper archives. The new internet provider has now connected my home by a fibre connection so it is very much faster. The Lap top uses bling search engine but I also use Goggle which produces less advertisements and less Americanised content.

I searched Lloyds Register of Shipping ( LR ) for "Antelope " looking for details of her dimensions, master, builders and owners from 1868 with a match in the Supplement to 1868. I then searched yearly until 1893.

I searched LR ships, plans and survey reports for "Antelope" with no match.

I searched the Crewlist Project for " Antelope" looking for her official number and links to MNL, appropriation book, crew lists, owner and master with a match. I followed the links for crew lists and found matches.

I searched The British Newspaper Archives (BNA) for "Antelope Griffiths", "Antelope Thomas", "Antelope Davies", and "Antelope Evans " looking for sailings, arrivals, a launch, owners, builders, mishaps and any details of her loss and found a number of matches. I also searched "Smack Antelope Newquay" , "Smack Antelope Aberystwith", "Dandy Antelope Newquay" , "Dandy Antelope Aberystwith", "ketch Antelope Newquay" and "ketch Antelope Aberystwith" with some matches. I also searches "Henry Davies" , "Henry Evans", Enoch Thomas" "David Davies", "David Evans" and "Evan Griffiths" looking for any details concerning them and found a match each for David Evans and David Davies.

I searched Welsh newspapers on line for "Antelope", "Antelope Griffiths", "Antelope Thomas", "Antelope Davies", and "Antelope Evans " looking for sailings, arrivals, a launch, owners, builders and any details of her loss and found a few matches.

I searched Coflein site for "Antelope" looking for any details of the wreck and a chart with no match.

I searched wreckeu site for "Antelope" looking for any details of the wreck with no matches.

I searched the Lifeboat Magazine Archive for "Antelope Aberystwith" and found a match in 1884.

## 6.0 Results

Vessel	Name/s	Antelope		
	Type	Smack converted to a Dandy		
		Cargo		
Built	Date	1868		
		Launched May 1868		
	Builder	Evans		
		Newquay		
Construction	Materials	Wood		
	Decks	One		
	Bulkheads	None		
Propulsion	Type	Sail		
	Details	Fore and aft rigged		
Engine	Details	N/A		
	Boilers			
Drive	Type			
	Number			
Dimensions	Length	51 ft	6 ins	
	Beam	16 ft	5 ins	
	Draught	6 ft	9 ins	
Tonnage	Gross	29 tons		
	Net			
Owner	First	Griffiths & Co.		
		Newquay		
	Last	Henry Evans		
		Newquay		
	Others			
Registry	Port	Aberystwith		
	Flag	British		
	Number	56402		
History	Routes	New Quay to Swansea, Porthcawl, Aberayron, Connah's Quay and Ireland		
	Cargo	Coal, slates, old iron, flour, salt, pitwood		
Final Voyage	From	Cwn Tudy, near New Quay		
	To	New Quay, Cardiganshire		
	Captain	David Evans		
	Crew	Henry Evans		
	Passengers	None		
	Cargo	Coal		
Wrecking	Date	26 <sup>th</sup> August 1893		
	Location	Cwn Tudy, near New Quay, Cardiganshire		
	Cause	Missing stays and drifted onto rocks		
	Loss of life	None		
	Outcome	wrecked		

**Gloucestershire Chronicle - Saturday 27 August 1870**

PORT OF GLOUCESTER.  
EXPORTS FOR THE WEEK ENDING AUGUST 26

From Port Madoc—The Antelope, Griffiths. with about 48 tons slates, for J. Sessions and Sons.

**Gloucestershire Chronicle - Saturday 24 September 1870**

GLOUCESTER.  
IMPORTS FOR THE WEEK ENDING SEPT....23.

From Saundersfoot— The Antelope, Griffiths, with about 50 tons coal. for Creme.

**Gloucestershire Chronicle - Saturday 03 September 1870**

PORT OF GLOUCESTER.  
EXPORTS FOR THE WEEK ENDING SEPT. 2 .

For Carmarthen, the Antelope, Griffiths, with 39 tons flour from Reynolds and Allen.

**Gloucestershire Chronicle - Saturday 01 October 1870**

PORT OF GLOUCESTER.  
EXPORTS FOR THE WEEK ENDING SEPT. 30.

For Hayle - the Antelope, Griffiths, with 41 tons salt, from W. Partridge and Co.

**The Cardiff and Merthyr Guardian Glamorgan Monmouth and Brecon Gazette 8<sup>th</sup> April 1871**

DOCK ROBBERIES.—Thomas Richards, a labourer, was charged with stealing a piece of pitwood from the smack Antelope, lying in the West Dock. The prisoner went on board the vessel on Tuesday and asked for a piece of pitwood, which the captain refused. He was afterwards found on the West Dock carrying a piece of pitwood on his shoulder. He was taken into custody but it was subsequently found that the mate had given him the wood and the prisoner was consequently discharged.

**Shipping and Mercantile Gazette - Friday 28 February 1873**

NEWQUAY— Cardigan—Feb. N, very fresh. Put in last night through stress of weather—The Antelope, Griffiths, from Portmadoc for Britonferry.

**Shipping and Mercantile Gazette - Tuesday 01 April 1873**

PENZANCE March 31: SW to cloudy. Put in 29th The Antelope, Griffiths, from Neath for Dunkirk

**Shipping and Mercantile Gazette - Friday 04 April 1873**

PENZANCE April 3 : Sailed, Ist—The Antelope, Griffiths, for Dunkirk.

**Shipping and Mercantile Gazette - Tuesday 29 April 1873**

NEWQUAY—Cardiganshire April 20: 25<sup>th</sup> NNE, fresh, cloudy. to NNW, fresh, fine. Put in, 25<sup>th</sup>—The Antelope, Griffiths, from Dunkirk for Barrow-in- Furness.

**Shipping and Mercantile Gazette - Thursday 08 October 1874**

NEWQUAY—Cardiganshire Oct. 6<sup>th</sup> W a gale.  
In the harbour waiting to proceed The Antelope, Griffiths and others

**The Aberystwith Observer 18<sup>th</sup> September 1875**

**NEWQUAY.**

**TO BE SOLD BY PUBLIC AUCTION, BY**

**M**R G. GRIFFITHS, auctioneer, on SATURDAY, 18TH of SEPTEMBER, 1875, at the Black Lion Hotel, New-quay, at 2 p.m., subject to such Conditions as shall be then produced, the whole (or 64 shares) of the well-known and fast-sailing SMACK "Antelope," of 29 tons register. Built at New-quay in the year 1868, and classed at Lloyd's 12, years.

The above Vessel has always been well kept, and is in first-rate condition.

For further particulars apply to John Thomas, Esq., Blaenwern, Llanarth, or to the Auctioneer, Aberayron.

Steam Saw Mills, Aberayron and Lampeter, September, 10th, 1875.

**Shipping and Mercantile Gazette - Saturday 20 November 1875**

NEWQUAY—Cardiganshire- —Nov. 19; Heavy NW gale, with barometer falling. No sailings or arrivals for some days past. In harbour—The brigs Aurora, Davies; Elizabeth Jane, James; Eutopia, Davis; and Ellen Catherine, Rees. Schooners Relative, Phillips; Emrye, Davies. Smacks Mary Ann, Bees; George Evans, Thomas; Antelope, Griffiths;

### **Shipping and Mercantile Gazette - Saturday 25 December 1875**

NEWQUAY—Cardiganshire- Dec. 24: We have had no sailings or arrivals for some days past, in consequence of the strong westerly gales prevailing. The following are ready to proceed:—The schooners Relative, Event; Elisabeth, Thomas and Sons, Williams; and smacks Antelope, Griffiths; Ina Lass Morgan

### **Shipping and Mercantile Gazette - Monday 01 April 1878**

NEWQUAY —Cardiganshire —March 29: During the last few days we have experienced strong easterly winds, and last night a very strong gale sprang up, with occasional hail storms. The following vessels are riding the harbour safely—The schooners Magdalen Esther, Thomas; Mary Eliza, Evans; Maggie Phillips, Evans; and Ellen Anne. Jones. Smacks Mary Anne, Bees; Ina Lass Morgan; Anne Davies, Davies; and Antelope, Thomas.

### **Lloyd's List - Wednesday 18 May 1881**

LIVERPOOL, May 17, 11 4 A.M.— Antelope, from Bowling, at Runcorn (cargo iron), sprung leak off the baron the 5th inst.

LIVERPOOL, May 17. 12 13 p.m.— Antelope—Lion.— The Antelope, before reported, when getting under weigh off New Ferry 15th inst, fouled the Lion, of Liverpool, and, to clear her, had to cut away forestay and lanyard port fore rigging; she carried away part of topgallant and main bulwarks. The Lion was also damaged.

### **THE LIFE-BOAT JOURNAL February 2<sup>nd</sup> 1885**

PORTHDINLLAEN, NORTH WALES. At ,11 o'clock on the night of the 6th Sept., 1884, the coxswain of the Life-boat, took up his station at the watch-house, so as to be in readiness should the services of the boat be required, as the wind was blowing very hard and there were three vessels at anchor in the bay. At 3 A.M. the wind increased to a strong gale from the N.W., accompanied by a heavy sea, and the coxswain then fired rockets for the crew of the George Moore Life-boat to assemble. At 9 o'clock the smack Antelope, of Aberystwyth, laden with slates, and having a crew of two men on board, showed signals of distress. The Life-boat immediately went to her assistance, and at the request of the Master put three men on board, who assisted to get the vessel into safety

**South Wales Daily News - Friday 04 January 1889**

MASTER MARINER DROWNED.—On Thursday afternoon there was found in the canal, near the Pottery bridge., the body of Mr Evans, master of the smack Antelope, of New Quay. Deceased had been missing since Wednesday night, and was last seen by the foreman at Hill's coal yard, near the Pipehouse. The body was found by James Thomas, the mate of the Antelope, and Evan Williams, of the smack Ina Lass. It was conveyed to the head-bouse, where it awaits an inquest. How the fatality occurred is not known, but it is supposed that in the dark the deceased missed his way.

**South Wales Daily News - Thursday 05 September 1889**

SWANSEA IMPORTS-Sept 4.

Carnarvon, Antelope, 47 slates. Johns & Co

**Cambria Daily Leader - Tuesday 10 September 1889**

SWANSEA SHIPPING NEWS

CLEARANCES

Sept. 9.

Antelope 29, Evans. Newquay, 44 coal, S. and J. Hill

**Lloyd's List - Saturday 11 March 1893**

ANTELOPE.—Newquay (Card.), March 10.—Antelope, of Newquay, entering Newquay this morning took the ground, and is lying badly, strained and made a quantity of water, covering cabin floor. On the flood tide hauled vessel further in ; kept pump going ; vessel not making so much water; still pumping. Vessel on the ground.

**Lloyd's List - Tuesday 14 March 1893**

ANTELOPE. Newquay, Card., March 13.—Ketch Antelope, of Aberystwith, aground on the sands, is still making water; pumping occasionally. Will not be able to examine vessel's bottom until she dries, Wednesday or Thursday.

**South Wales Daily News - Monday 03 April 1893**

Swansea

Imports April 1<sup>st</sup>

Port Dinorwic Antelope 47 slates J Glasbrook Bros.

**Lloyd's List - Monday 28 August 1893**

ANTELOPE.—Newquay. Cardigan, Aug. 27: 840 a.m.— Antelope ketch, of Aberystwith, stranded last night, after discharging coal, close to Cwnatudy, three miles west of Newquay Head; probably total wreck. Crew landed on the rocks.

**South Wales Daily News - Tuesday 29 August 1893**

LOSS OF A NEW QUAY

VESSEL.

The Antelope (dandy), after discharging her cargo at Cwm Tydu beach, on Saturday, while attempting to come out missed her stays and drifted on the rocks, and soon became a total loss. The crew with difficulty saved themselves by climbing over the cliff. If fine weather continues the sails and gear will be saved.



Fig. 1 Cwm Tydu beach

### **Lloyd's List - Thursday 31 August 1893**

#### MARITIME LOSSES AND CASUALTIES

Casualties reported at Lloyds on loss book between Wednesday 23<sup>rd</sup> August and Wednesday 30<sup>th</sup> August 1893 : -

Antelope ..29tons British built 1868 ---- Ashore\*

\*crew saved

### **David Evans, Shipbuilder, Newquay**

#### **Cardiff Times - Friday 01 March 1861**

SHIP LAUNCH AT BARRY ISLAND. A NOVEL SCENE. On Tuesday last a fine three-masted schooner, named the "Laura and Isabel," was launched at Barry Island, in a most successful manner, and amid the plaudits of hundreds who were assembled to witness the novel scene in that locality. On one side of the island is a splendid beach, formed of fine sand, and runs out a distance of 600 yards, capable of affording capital bathing accommodation, Inside the bay there is capacity for building and launching a ship of 1000 tons burthen. There are, in fact, combinations of natural and commercial advantages, which may induce the visitor for summer's recreation, and the mercantile man for business pursuits. Francis Crawshay, Esq., sometime ago took up his residence here, having purchased the island, and came to the determination to build a ship. He employed Mr. David Evans, shipbuilder, Newquay, and under his directions the

vessel whose launch we record was commenced. Her length over all is ninety-seven feet; breadth twenty-three feet; and depth thirteen feet. She will carry 300 tons. and is intended for the foreign trade. In rig she will resemble, we believe, the large clipper schooners of the United States, whose sailing qualities are scarcely surpassed.

### **David Davies, an owner of Antelope**

### **South Wales Daily News - Saturday 29 November 1873**

NEWQUAY. GALLANT RESCUE.—A correspondent says: On Thursday night, about eight o'clock, the inhabitants of this place were struck with terror by hearing wild and heart-rending cries issuing from the bay. It was at once thought, and correctly, that one of the fishing-boats had sunk, and that the cries were those of the perishing crew. A multitude ran wildly towards the lower pier. Launching the life-boat in time was out of the question, and the sea ran so high that it was felt no other boat had the least chance of making its way towards the ill-fated smack but James Jones, Glandwr, feeling it impossible to stand there while his fellow-sailors were perishing without making an effort, at least, to save them, asked would any one join him in open boat? Captain Davies, Queen's Hotel, at once volunteered to go; then followed Griffith Thomas and Captain Jones, Naphtali. They were instantly in a boat, as they made their way through the raging surf the crowd stood in breathless suspense. But before long a shout was heard coming over the water that all were safe so far. Soon they were on the pier. The rescued crew, five in number, were more than half drowned, but they are doing well under the skilful treatment of Dr. Evans.

## 7.0 Analysis

In 1878 and 1879 the master of Antelope is given as Davies, this is the mates name at the time but not the same person or the Davies that later became the master. In 1879 it may be that Antelope was laid up in the harbour under the charge of the mate, Davies.

1873 was the only year Antelope was recorded crossing the English channel when she travelled from Neath to Dunkirk, the cargo is not recorded but was probably coal. The return journey was to Barrow in Furness but the cargo is not recorded and it is unlikely to have been in ballast to this destination outside her usual area.

1881 was another unusual year for the Antelope as she travelled to London, then Scrabster in the far north of Scotland returning to Runcorn and Liverpool.

In 1889 the description of the rig of Antelope changes from a smack to a ketch, the LR for 1889 is unchanged and Antelope does not appear in the 1890 edition. When Antelope is wrecked she is described as a dandy and MNL does not include this description as an option. A dandy has two masts like a ketch but the aft mast is only one third of the size of the main mast whereas on a ketch it is half the size. It is apparent that Antelope had the second smaller mast fitted in about 1889 forward of the rudder stock, if it was fitted behind it would be a yawl. The conversion was done to reduce the size of the main sail by shortening the boom, but keeping the same sail area but with one third of it on the aft mast. This made the sail manageable by a smaller crew, reducing the operating costs of the vessel. The Antelope had been operating with two crew from 1883, before this it operated with a master, a mate and a boy, sometimes described as a cook but at 12 years old, he is unlikely to be a chef.

In January 1889 the master of the Antelope Mr Evans drowns but the transcripts of the crew list show Henry Evans as the master and he continues to be shown as the master until the vessel is wrecked in 1893, with a break in 1892 of six months. The mate who is reported to have found the body is not listed on the crew list. There was only one Antelope of Aberystwith in the MNL at this time and not record of a Antelope of Newquay where this vessel was based. The newspaper report does not fit this Antelope and the crew lists were examined so listing a deceased as the captain would not have been accepted. The location given appears to be on the Swansea Canal which connected with Swansea Docks and Antelope was in Swansea at the time.

The loss of the Antelope at Cwm Tydu was not the first occasion she had delivered cargo there although it is unlikely to have been recorded, she arrived in July

1877 at Newquay from Cwmtidy. At 29 tons she was suited to delivering cargo to beaches where she dried out on the sand for unloading at low tide, these events are unlikely to be recorded, only occasionally her return or sailing to them.

A ship is said to miss stays when she fails in the attempt to go about from one tack to another. This is the explanation given for reason the Antelope was lost on the rocks. It appears she was tacking out of the beach at Cwm Tydu towards the wind, when she failed to complete a tack and continued into the rocks. A vessel like the Antelope which is fore and aft rigged fails to complete a tack and is stuck head to wind with no wind acting on the sails, just making them flap, to provide drive in a new direction.

In the later years Antelope carried mainly coal or culm from South Wales to West Wales often returning in ballast but some voyages she carried old iron.

The BNA produced most of the matches for Antelope with the WNL producing the remainder. The number of reports varied greatly from year to year and for small vessel completing the same short journey so regularly it seems there was numbers of occasions when it was ignored. The place where Antelope was lost after discharging on a beach , suggests it probably delivered to beach locations for communities without a harbour. They would not be reporting to Lloyds List or other newspapers so the arrival went unreported.

The crew lists are transcriptions of the crew and master details only, with no details of the owner or voyages made.

## 8.0 Conclusions & Recommendations

I have spent about thirty five hours on this project with about 95% of the time spent on line.

The Antelope made only one recorded passage to Dunkirk returning to Barrow in Furness, also to London then Scrabster returning to Liverpool via Bowling and Runcorn. The small size of the vessel is unlikely to have made these longer voyages profitable with the volume of cargo she was able to carry. The remainder of her career was spent on short journeys often carrying coal in loads up to 60 tons.

The account of the drowning of the master of the Antelope does not fit the name given for the mate of this Antelope but there is no record of another vessel called Antelope that it could be and it was in Swansea at the time. I cannot resolve the mystery.

If access was available to a genealogist site to research the masters or crew was available, that is an area that may be worth pursuing.

The research has answered most of my questions, I found only one report of another vessel built by Evans of Newquay that may be same builder. The Crew lists may give details of all the crews and various masters, but they are not available on line.

The story of the Antelope is mainly uneventful, lacking in human interest, the wrecking is a mistake from which the crew escaped without aid and there is little to include in any further publication.

## 9.0 References

<https://coflein.gov.uk/>

<https://www.crewlist.org.uk/>

<https://www.geographicguide.com/>

<https://www.google.com/>

<https://www.britishnewspaperarchive.co.uk/>

<https://www.google.com/>

<https://hec.lrfoundation.org.uk/>

<https://lifeboatmagazinearchive.rnli.org/>

<https://www.navionics.com/>

<https://newspapers.library.wales/>

<http://ontheworldmap.com/>

<https://en.wikipedia.org/>

## Appendices:

### Appendix A – Table of Lloyd’s Registers entries for the *Antelope*

10	Ann	Sr	G. Moore	58			Wales	1850	W. James	Milford	Mil. Coaster	5	A 1	5, 68
		I.B.												
11	Annie Richmond	Bk (Iron)	Gibbs	694	178.2	29.3	19.1	1868	RG Sharp	Liverp'l	Cly Austral	-	A 1	6, 68
			Cem 68								(A.&C.P.)			
12	Antelope	Sk	E Griffiths	29	51.6	15.8	6.9	1868	Griffiths & Evans	Newq'y	Ngy. Coastr	12	A 1	5, 68
		I.B.									(A.&C.P.)			
14	Aberystwyth	S	Bartlett	833	154.6	33.7	21.3	1868	New	Liverp'l	St J. Livrp'l	7	A 1	5, 68
		I.B.	Parsons								Liv. Savana			10, 68
15	Alphington	Sr	J Melville	100	79.3	21.3	9.9	1868	Moon	London	Dun. Coastr	8	A 1	6, 68
		I.B.									(A.&C.P.)			
16	Alison	Sr	Wilmott	97	83.6	20.5	9.9	1868	J. Rhys	Goole	Goo. Coaster	8	A 1	7, 68
		I.B.									(A.&C.P.)			
17	Amazon	Bk		604	154.6	31.6	17.9	1867	R Redw'y	Exeter	Drt.	8	A 1	6, 68
		c.f.									(A.&C.P.)			
18	Acacia	Bn	A. Curtis	191	98.0	24.1	12.1	1868	J P Douse	PE Isl	PEI. Livrp'l	5	A 1	6, 68
		I.B.	J. Williams								(A.&C.P.)			4, 69
19	Anne Holland	Sr	G. Jones	136	81.7	23.1	12.0	1868	Jones & C. Griffiths	Pt made	Pmd. Hmbrg	12	A 1	7, 68
		I.B.									(A.&C.P.)			9, 68
20	Amy	Bn	W Pinkh'm	180	102.5	23.7	12.6	1868	Pinkh'm & Mansfield	Plymth	Tgn. Medit.	8	A 1	7, 68
		I.B.									(A.&C.P.)			
21	Anna Maria	Bg	H Laph'm	243	111.7	24.6	14.1	1868	Grant & c. Date	Sale'mb	Drt.	12	A 1	7, 68
		I.B.									(A.&C.P.)			
22	Arcot	S	Gooch	1191	223.3	34.8	21.8	1868	G. D. Tyser	London	Sld. India	-	A 1	7, 68
		(Iron) Cem. 68									(A.&C.P.)			
23	Argos	Scw	G. Rooke	164	129.4	20.1	9.8	1868	J. Gaudet	London	Nwc. France	-	A 1	7, 68
		(Iron) Cem. 68	MC. 68	109	45	H P.					(A.&C.P.)			
24	Ann Duthie	S	A. Birnie	998	200.0	35.2	20.1	1868	Duthie & Duthie	Aberdn	Abn Austral	14	A 1	8, 68
		I.B.									(A.&C.P.)			
25	Alliance	Bk	E. Burdes	368	136.0	23.9	14.9	1858	J. Burdes	N Shlds	Blg.	9	A 1	4, 8, 68
		I.B.									Cont. 67-			

**Supplement 1868** No. 12 Antelope a smack, master E Griffiths, 29 tons, 51ft 6inches long, 15ft 8 inches wide, 6ft 9 inches draught, built in Newquay by Evans, launched May 1868, classified A1 for 12 years in May 1868, with Iron bolts and anchor & chain proved on approved machine. Registered at Newquay sailing as a Newquay Coaster.

1869, 1870, 1871, No changes

1872 official number 56402 added - No other changes

1873, 1874 No changes

1875 classification removed

1876 now registered at Aberystwith, E Griffiths & Co – No other changes

- 1877 master amended -Thomas, owner amended to D Davies & Co, half time  
. Newquay since 1877, gross and net tonnage 29. No other changes
- 1878 master E Thomas, new survey October 1877 at Newquay, classified A1 - No  
. other changes
- 1879 New survey at Newquay April 1880, still A1, now full time Newquay since  
. 1880 – 8years
- 1880 No changes
- 1881 Oner amended to E Thomas & Co. - No other changes
- 1882, 1883 No changes
- 1884 Master amended to H Davies, new survey Newquay June 1884, half time  
. Newquay from 1884, construction material wood added. -No other changes
- 1885 No changes
- 1886 LR new format Universal register , No Changes but details of survey and  
. classification notshown
- 1887 owner now T Evans no other changes
- 1888, 1889 LR old format, No changes
- 1890 Universal register - No entry
- 1891 not available on line
- 1892 no record

## **Appendix B – The Timeline for the *Antelope***

### **1869**

March 26 1869 Portmadoc arrived Antelope, Griffiths from Newquay

April 1 1869 Portmadoc arrived Antelope, Griffiths

May 25 1869 Swansea sailed Antelope, Griffiths for Newquay

July 1 1869 Llanelly arrived Antelope, Griffiths from Newquay

July 10 1869 Llanelly sailed Antelope, Griffiths for Newquay

September 4 1869 Portmadoc arrived Antelope, Griffiths from Newquay

September 9 1869 Portmadoc arrived Antelope, Griffiths from Newquay

September 18 1869 Portmadoc entered loading Antelope, Griffiths for Bristol

October 5 1869 Portmadoc sailed Antelope, Griffiths for Bristol

### **1870**

February 21 1870 Saundersfoot arrived Antelope, Griffiths from Carmarthen

July 12 1870 Newquay, Card. arrived Antelope, Griffiths from Hugin

August 16 1870 Portmadoc sailed Antelope, Griffiths for Gloucester

w/e August 26 1870 Gloucester arrived Antelope, Griffiths from Portmadoc- slates

August 29 1870 Gloucester sailed Antelope, Griffiths for Caermarthen – flour

September 12 1870 Saundersfoot arrived Antelope, Griffiths from Carmarthen

September 17 1870 Saundersfoot sailed Antelope, Griffiths for Gloucester – coal

September 21 1870 Gloucester arrived Antelope, Griffiths from Saundersfoot

September 30 1870 Gloucester sailed Antelope, Griffiths for Hayle

October 11 1870 Hayle arrived Antelope, Griffiths from Helford

### **1871**

March 6 1871 Cardiff sailed Antelope, Griffiths for Waterford  
March 31 1871 Cardiff arrived Antelope, Griffiths from Waterford  
April 6 1871 Cardiff sailed Antelope, Griffiths for Swansea - Pitwood  
April 29 1871 Kinsale sailed Antelope (smack) for Milford  
May 3 1871 Poole sailed Antelope, Griffiths for Bristol  
August 2 1871 Swansea sailed Antelope, Griffiths for Newquay  
August 4 1871 Mumbles passed Antelope, Griffiths for Newquay  
August 14 1871 Newquay, Card. arrived Antelope, Griffiths from Milford  
August 14 1871 Newquay, Card. sailed Antelope, Griffiths for Mostyn  
September 15 1871 Port Talbot arrived Antelope, Griffiths from Mostyn  
September 21 1871 Port Talbot sailed Antelope, Griffiths for Swansea  
September 21 1871 Swansea sailed Antelope, Griffiths for Newquay  
September 25 1871 Newquay, Card. arrived Antelope, Griffiths from Milford  
November 14 1871 Newquay, Card. arrived Antelope, Griffiths from Milford  
December 9 1871 Newquay, Card. sailed Antelope, Griffiths for Swansea

**1872**

January 9 1872 Abersoch sailed Antelope, Griffiths from Roads  
January 10 1872 Abersoch put back into Roads Antelope, Griffiths  
January 11 1872 Abersoch put into Roads Antelope, Griffiths from Portmadoc  
March 20 1872 Liverpool sailed Antelope, Griffiths for Swansea  
March 22 1872 Swansea arrived Antelope, Griffiths from Liverpool  
March 29 1872 Swansea sailed Antelope, Griffiths for Newquay  
May 8 1872 Dublin sailed Antelope for Swansea  
May 11 1872 Swansea arrived Antelope, Griffiths from Dublin  
May 25 1872 Swansea sailed Antelope, Griffiths for Pembrey

June 1 1872 Solva passed through Ramsay sound to northward Antelope,  
. Griffiths for Newquay

June 1 1872 Newquay, Card. arrived Antelope, Griffiths from Pembrey

June 7 1872 Llangranog arrived Antelope, Griffiths from Pembrey

June 13 1872 Llangranog arrived Antelope, Griffiths from Milford

July 12 1872 Newry arrived Antelope from Newport

July 22 1872 Newry sailed Antelope for Glasgow

August 11 1872 Saundersfoot sailed Antelope, Griffiths for Hayle

August 14 1872 Saundersfoot arrived Antelope, Griffiths from Hayle

October 7 1872 Newquay, Card. arrived Antelope, Griffiths from Milford

### **1873**

February 16 1873 Portmadoc arrived Antelope, Griffiths from Cardigan

February 25 1873 Portmadoc sailed Antelope, Griffiths for Britonferry

February 27 1873 Newquay, Card. Put in Antelope, Griffiths from Portmadoc for  
. Britonferry

March 13 1873 Britonferry arrived Antelope, Griffiths from Portmadoc

March 29 1873 Penzance put in Antelope, Griffiths from Neath for Dunkirk

April 1 1873 Penzance sailed Antelope, Griffiths for Dunkirk

April 5 1873 Dunkirk arrived Antelope, Griffiths from Neath

April 25 1873 Newquay, Card. Put in Antelope, Griffiths from Dunkirk for Barrow

May 1 1873 Barrow in Furness arrived Antelope, Griffiths from Dunkirk

May 9 1873 Barrow in Furness sailed Antelope, Griffiths for Britonferry

June 16 1873 Swansea arrived Antelope, Griffiths from Newquay

June 17 1873 Swansea sailed Antelope, Griffiths for Newquay

July 7 1873 Swansea sailed Antelope, Griffiths for Newquay

August 1 1873 Newport, Mon arrived Antelope, Griffiths from Newquay

August 6 1873 Dublin sailed Antelope for Wexford

December 18 1873 Newport, Mon arrived Antelope, Griffiths from Milford

## **1874**

March 6 1874 Swansea arrived Antelope, Griffiths from Newquay

March 14 1874 Swansea sailed Antelope, Griffiths for Newquay

April 22 1874 Portmadoc sailed Antelope, Griffiths for Porthcawl

May 13 1874 Porthcawl sailed Antelope, Griffiths for Portmadoc

w/e May 20 1874 Portmadoc arrived Antelope, Griffiths from Cardiff

June 17 1874 Burryport sailed Antelope, Griffiths for Newquay

July 8 1874 Aberystwith arrived Antelope, Griffiths from Milford

w/e July 15 1874 Aberystwith sailed Antelope, Griffiths for Britonferry

August 24 1874 Burryport sailed Antelope, Griffiths for Cardigan

September 11 1874 Newquay, Card. In harbour waiting tide Antelope, Griffiths

September 28 1874 Newquay, Card. arrived Antelope, Griffiths from Swansea

September 30 1874 Newquay, Card. sailed Antelope, Griffiths for Swansea

October 8 1874 Newquay, Card. In harbour waiting to proceed Antelope, Griffiths

w/e December 2 1874 Portmadoc arrived Antelope, Griffiths from Cardigan

December 12 1874 Portmadoc arrived Antelope, Griffiths from Newport

## **1875**

March 13 1875 Newquay, Card. arrived Antelope, Griffiths from Swansea

April 20 1875 Newquay, Card. sailed Antelope, Griffiths for Caernarvon

April 22 1875 Caernarvon arrived Antelope, Griffiths from Newquay

April 29 1875 Caernarvon sailed Antelope, Griffiths for Kenmare

June 28 1875 Swansea sailed Antelope, Griffiths for Cardigan

July 10 1875 Newquay, Card. sailed Antelope, Griffiths for Dublin  
August 22 1875 Swansea sailed Antelope, Griffiths for Newquay  
September 12 1875 Swansea sailed Antelope, Griffiths for Newquay  
September 19 1875 Newquay, Card. arrived Antelope, Griffiths from Swansea  
September 29 1875 Swansea arrived Antelope, Griffiths from Newquay  
October 10 1875 Newquay, Card. arrived Antelope, Griffiths from Swansea  
November 4 1875 Newquay, Card. remaining in harbour Antelope, Griffiths  
November 19 1875 Newquay, Card. remaining in harbour Antelope, Griffiths  
November 23 1875 Newquay, Card. sailed Antelope, Griffiths for Swansea  
December 24 1875 Newquay, Card. In harbour waiting to proceed Antelope,  
. Griffiths

## **1876**

January 14 1876 Newquay, Card. In the harbour Antelope, Griffiths  
June 6 1876 Newquay, Card. arrived Antelope, Rees from Cardigan  
June 27 1876 Britonferry sailed Antelope, Rees for Newquay  
July 11 1876 Britonferry sailed Antelope, Rees for Newquay  
July 30 1876 Swansea arrived Antelope, Rees from Cardigan  
August 7 1876 Newquay, Card. arrived Antelope, Rees from Milford  
August 22 1876 Swansea arrived Antelope 21, Rees from Newquay – ballast  
August 25 1876 Swansea sailed Antelope, Rees for Newquay  
November 22 1876 Portinllaen put in Antelope, Rees from Liverpool for  
. Aberayron  
November 30 1876 Aberayron arrived Antelope, Rees from Runcorn

**1877**

March 19 1877 Aberayron sailed Antelope, Thomas for Newquay

April 16 1877 Llanelly arrived Antelope from Killough

April 23 1877 Briton ferry arrived Antelope, Thomas from Llanelly

May 5 1877 Neath cleared Antelope for Pwllheli – coal Glyncorwg Coal Co.

May 31 1877 Runcorn sailed Antelope, Thomas for Newquay, Cardiganshire

June 14 1877 Waterford arrived Antelope from Newport - coal

June 23 1877 Swansea sailed Antelope, Thomas for Newquay

June 25 1877 Newquay, Card. arrived Antelope, Thomas from Swansea

June 30 1877 Briton ferry arrived Antelope, Thomas from Newquay

July 2 1877 Neath cleared Antelope for Newquay – culm M S Williams

July 4 1877 Briton ferry sailed Antelope, Thomas for Newquay. Card.

July 17 1877 Neath cleared Antelope for Newquay – culm M S Williams

July 30 1877 Newquay, Card. arrived Antelope, Thomas from Cwntidy

September 4 1877 Swansea sailed Antelope, Thomas for Newquay

**1878**

March 29 1878 Newquay, Card. Riding out gale in harbour Antelope, Thomas

June 23 1878 Llanelly arrived Antelope, Thomas from Newquay

June 25 1878 Llanelly sailed Antelope, Griffiths for Fishguard

July 15 1878 Newquay, Card. arrived Antelope, Thomas from Milford

July 15 1878 Newquay, Card. sailed Antelope, Griffiths for Milford

July 23 1878 Newquay, Card. arrived Antelope from Milford

July 24 1878 Swansea arrived Antelope, Thomas from Newquay

July 26 1878 Swansea sailed Antelope, Thomas for Newquay

September 7 1878 Swansea arrived Antelope, Thomas from Newquay

September 10 1878 Swansea sailed Antelope, Thomas for Newquay

September 22 1878 Swansea arrived Antelope, Thomas from Newquay

October 12 1878 Porthcawl sailed Antelope, Thomas for Newquay

October 17 1878 Newquay, Card. arrived Antelope, Davies from Porthcawl

### **1879**

January 3 1879 Newquay, Card. In the harbour Antelope, Davies

January 27 1879 Newquay, Card. In the harbour Antelope, Davies

February 24 1879 Holyhead arrived Antelope, Thomas from Newquay for  
Carlingford

May 31 1879 Swansea arrived Antelope, Thomas from Newquay

July 14 1879 Newquay, Card. sailed Antelope, Griffiths for Swansea

August 3 1879 Swansea arrived Antelope

December 5 1879 Swansea arrived Antelope, Thomas from Newquay

December 11 1879 Swansea sailed Antelope, Thomas for Newquay

### **1880**

May 27 1880 Cardiff arrived Antelope, Thomas from Newquay

June 22 1880 Swansea sailed Antelope, Thomas for Newquay

August 16 1880 Llanelly cleared Antelope for Newquay – 45 tons coal W Rees

September 7 1880 Swansea sailed Antelope, Thomas for Newquay

### **1881**

March 17 1881 Scrabster arrived Antelope, Thomas from London

May 5 1881 Runcorn arrived Antelope from Bowling – leaky

May 17 1881 Liverpool Antelope in collision with Lion - damaged

July 11 1881 Newquay, Card. arrived Antelope, Thomas from Liverpool

July 27 1881 Wexford sailed Antelope for Swansea

September 9 1881 Swansea arrived Antelope, Thomas from Newquay

September 19 1881 Swansea arrived Antelope, Thomas from Newquay

September 27 1881 Swansea arrived Antelope, Thomas from Newquay

## **1882**

February 9 1882 Portinllaen put in Antelope, Thomas from Newquay for Liverpool

February 10 1882 Portinllaen sailed Antelope, Thomas for Liverpool

February 22 1882 Liverpool cleared Antelope for Newquay

March 16 1882 Holyhead arrived Antelope, Thomas from Newquay

May 31 1882 Swansea sailed Antelope, Davies for Newquay

June 14 1882 Aberdovey arrived Antelope, Thomas from Newquay, Cardigan

July 27 1882 Newquay, Card. arrived Antelope, Davies from Britonferry

August 14 1882 Swansea arrived Antelope, Davies from Newquay

August 17 1882 Swansea sailed Antelope, Davies for Newquay

August 21 1882 Newquay, Card. arrived Antelope, Davies from Swansea

September 4 1882 Newquay, Card. arrived Antelope, Davies from Milford

September 10 1882 Swansea sailed Antelope, Davies for Newquay

September 12 1882 Newquay, Card. arrived Antelope, Davies from Swansea

September 19 1882 Swansea arrived Antelope, Davies from Cardigan

October 4 1882 Swansea sailed Antelope, Davies for Newquay

October 7 1882 Milford arrived Antelope, Davies from Swansea

October 18 1882 Swansea arrived Antelope, Davies from Newquay

October 27 1882 Swansea sailed Antelope, Davies for Newquay

December 21 1882 Swansea arrived Antelope, Davies from Newquay

December 23 1882 South Dock, Swansea Antelope 29, Davies Newquay

### **1883**

January 1 1883 South Dock, Swansea Antelope 29, Davies Newquay

January 5 1883 South Dock, Swansea Antelope 29, Davies Newquay

January 7 1883 Swansea sailed Antelope, Davies for Newquay

March 12 1883 Swansea arrived Antelope, Davies from Newquay

March 14 1883 Swansea cleared Antelope 29, Davies for Newquay-46 tons coal  
. D I Jones & Co

March 15 1883 Swansea sailed Antelope, Davies for Newquay

March 19 1883 South Dock, Swansea Antelope 29, Davies Newquay

April 30 1883 South Dock, Swansea arrived Antelope 29, Davies from Newquay

May 3 1883 South Dock, Swansea Antelope 29, Davies Newquay

May 3 1883 Swansea sailed Antelope, Davies for Newquay

May 21 1883 Briton ferry sailed Antelope, Davies for Newquay. Card.

May 26 1883 Swansea arrived Antelope, Davies from Newquay

May 29 1883 River, Swansea Antelope 29, Davies Newquay

May 29 1883 Swansea sailed Antelope, Davies for Newquay

July 4 1883 Swansea arrived Antelope, Davies from Newquay

July 6 1883 Swansea cleared for sea Antelope 29, Davies for Newquay-46 tons  
. coal D I Jones

July 7 1883 Swansea sailed Antelope, Davies for Newquay

July 9 1883 Newquay, Card. arrived Antelope, Davies from Swansea

July 25 1883 Briton ferry arrived Antelope, Davies from Newquay

August 11 1883 Swansea sailed Antelope, Davies for Newquay

August 21 1883 Swansea arrived Antelope, Davies from Newquay

September 17 1883 Burry port arrived Antelope, Davies from Cardigan  
September 23 1883 Burry port sailed Antelope, Davies for Cardigan  
September 24 1883 Milford arrived Antelope 29, Davies from Pembrey  
October 2 1883 Newquay, Card. sailed Antelope, Davies for Swansea  
October 2 1883 Prince of Wales dock, Swansea arrived Antelope 29, Davies from  
. Newquay  
October 6 1883 Prince of Wales dock, Swansea Antelope 29, Davies Newquay  
October 7 1883 Swansea sailed Antelope, Davies for Newquay  
November 1 1883 South Dock Swansea arrived Antelope 29, Davies from  
. Newquay  
November 7 1883 Swansea sailed Antelope, Davies for Newquay  
November 17 1883 Swansea arrived Antelope, Davies from Newquay  
November 29 1883 Prince of Wales dock, Swansea Antelope 29, Davies Newquay  
December 2 1883 South Dock Swansea arrived Antelope 29, Davies from  
. Newquay  
December 5 1883 Swansea sailed Antelope, Davies for Newquay

## **1884**

March 4 1884 Swansea arrived Antelope, Davies from Newquay  
March 31 1884 Porthcawl arrived Antelope 29 from Newquay – ballast  
April 1 1884 Porthcawl sailed Antelope for Newquay – 50 tons coal  
April 4 1884 Newquay, Card. arrived Antelope, Davies from Swansea  
April 12 1884 Swansea arrived Antelope, Davies from Newquay  
April 16 1884 Swansea sailed Antelope, Davies for Newquay  
April 26 1884 Swansea arrived Antelope, Davies from Newquay  
May 6 1884 Swansea sailed Antelope, Davies for Newquay  
June 1 1884 Swansea arrived Antelope, Davies from Newquay

June 5 1884 Swansea sailed Antelope, Davies for Newquay  
June 9 1884 Newquay, Card. arrived Antelope, Davies from Swansea  
June 17 1884 Newquay, Card. sailed Antelope, Davies for Milford  
June 25 1884 Newquay, Card. sailed Antelope, Davies for Milford  
August 14 1884 Porthcawl arrived Antelope 29 from Cardigan - ballast  
September 6 1884 Porthdinllaen lifeboat rendered assistance to Antelope of  
. Aberystwith carrying slates  
September 13 1884 South Dock Swansea arrived Antelope 29, Davies from  
. Cardigan  
September 20 1884 Newquay, Card. arrived Antelope from Swansea  
November 6 1884 Bristol Pill & Kingroad sailed Antelope for Swansea  
December 26 1884 North Dock, Swansea sailed Antelope 29, Davies for Newquay

## **1885**

w/e April 16 1885 Aberayron sailed Antelope, Davies for Swansea  
w/e April 29 1885 Aberayron sailed Antelope, Davies for Aberdovey  
w/e April 29 1885 Aberdovey arrived Antelope smack, Davies from Newquay  
w/e June 5 1885 Aberayron arrived Antelope, Davies from Swansea  
w/e July 1 1885 Aberdovey arrived Antelope smack, Davies from Caernarvon  
July 1 1885 Aberayron sailed Antelope, Davies for Milford  
July 28 1885 Aberdovey sailed Antelope, Davies for Swansea  
August 8 1885 Swansea arrived Antelope, Davies from Newquay  
September 19 1885 Swansea sailed Antelope, Davies for Newquay  
w/e October 21 1885 Aberayron arrived Antelope, Davies from Porthcawl  
w/e October 26 1885 Aberayron sailed Antelope, Davies for Swansea  
w/e November 11 1885 Aberayron sailed Antelope, Davies for Porthcawl  
w/e December 23 1885 Aberayron arrived Antelope, Davies from Swansea

**1886**

w/e January 6 1886 Aberayron arrived Antelope, Davies from Swansea

w/e February 17 1886 Aberayron sailed Antelope, Davies for Porthcawl

w/e February 24 1886 Aberayron arrived Antelope, Davies from Porthcawl

March 2 1886 South dock, Swansea arrived Antelope 29, Davies from Newquay

w/e March 10 1886 Aberayron sailed Antelope, Davies for Swansea

w/e March 10 1886 Aberayron arrived Antelope, Davies from Swansea

w/e April 7 1886 Aberayron arrived Antelope, Davies from Bristol

w/e April 21 1886 Aberayron arrived Antelope, Davies from Swansea

w/e April 21 1886 Aberayron sailed Antelope, Davies for Swansea

w/e April 28 1886 Aberayron sailed Antelope, Davies for Swansea

w/e May 12 1886 Aberayron arrived Antelope, Davies from Porthcawl

w/e May 26 1886 Aberayron sailed Antelope, Davies for Swansea

w/e June 2 1886 Aberayron arrived Antelope, Davies from Swansea

w/e June 5 1886 Aberayron arrived Antelope, Davies from Swansea

July 14 1886 Aberayron arrived Antelope, Davies from Swansea

August 19 1886 South dock, Swansea arrived Antelope 29, Davies from Newquay

w/e September 22 1886 Aberayron arrived Antelope, Davies from Swansea

w/e September 22 1886 Aberayron sailed Antelope, Davies for Swansea

w/e October 26 1886 Aberayron sailed Antelope, Davies for Swansea

w/e November 11 1886 Aberayron sailed Antelope, Davies for Porthcawl

w/e November 30 1886 Aberayron arrived Antelope from Bristol

w/e November 30 1886 Aberayron arrived Antelope, Davies from Caernarvon

w/e November 30 1886 Aberayron sailed Antelope, Davies for Caernarvon

**1887**

February 2 1887 Porthcawl windbound Antelope

w/e February 16 1887 Aberayron sailed Antelope, Evans for Porthcawl

w/e March 16 1887 Aberayron sailed Antelope, Evans for Swansea

March 17 1887 Newquay, Card. sailed Antelope, Evans for Swansea

April 7 1887 Swansea cleared Antelope, Evans for Newquay – 44 tons coal. Hill

July 1 1887 Swansea sailed Antelope, Evans for Newquay

July 4 1887 Newquay, Card. arrived Antelope, Evans from Swansea

July 18 1887 Newquay, Card. sailed Antelope, Evans for Swansea

July 19 1887 Swansea arrived Antelope, Evans from Newquay

July 22 1887 Swansea sailed Antelope, Evans for Newquay

July 24 1887 Newquay, Card. arrived Antelope, Evans from Swansea

August 4 1887 Porthcawl sailed Antelope, Evans for Newquay 60 tons coal

August 17 1887 Newquay, Card. sailed Antelope, Evans for Swansea

August 18 1887 Swansea arrived Antelope, Evans from Newquay

August 20 1887 Swansea sailed Antelope, Evans for Newquay

w/e August 24 1887 Aberayron arrived Antelope, Evans from Swansea

w/e August 24 1887 Aberayron sailed Antelope, Evans for Swansea

September 8 1887 Newquay, Card. sailed Antelope, Evans for Swansea

September 11 1887 Swansea arrived Antelope, Evans from Newquay

September 11 1887 Swansea sailed Antelope, Evans for Newquay

September 15 1887 Swansea sailed Antelope, Evans for Newquay

September 22 1887 Newquay, Card. arrived Antelope, Evans from Swansea

September 26 1887 Porthcawl arrived Antelope from Cardigan – ballast

September 29 1887 Porthcawl sailed Antelope, Evans for Aberayron

October 2 1887 Newquay, Card. arrived Antelope, Evans from Porthcawl

October 7 1887 Newquay, Card. sailed Antelope, Evans for Swansea  
October 10 1887 Porthcawl arrived Antelope from Aberayron  
October 13 1887 Porthcawl sailed Antelope of Newquay for Cardigan 60 tons coal  
October 18 1887 Newquay, Card. arrived Antelope, Evans from Porthcawl  
October 21 1887 Newquay, Card. sailed Antelope, Evans for Swansea  
October 23 1887 Swansea arrived Antelope, Evans from Newquay  
November 7 1887 Swansea sailed Antelope, Davies for Newquay  
November 12 1887 Newquay, Card. arrived Antelope, Evans from Swansea  
w/e November 16 1887 Aberayron arrived Antelope, Evans from Swansea  
November 22 1887 Newquay, Card. sailed Antelope, Evans for Swansea  
November 24 1887 Swansea arrived Antelope, Evans from Newquay  
December 2 1887 Swansea sailed Antelope, Evans for Newquay  
w/e December 7 1887 Aberayron arrived Antelope, Evans from Swansea

**1888**

March 2 1888 Newquay, Card. sailed Antelope, Evans for Swansea  
March 3 1888 Swansea arrived Antelope 29, Evans from Newquay  
March 6 1888 Swansea sailed Antelope, Evans for Newquay  
March 7 1888 Newquay, Card. arrived Antelope, Evans from Swansea  
March 18 1888 Swansea arrived Antelope 29, Evans from Newquay - ballast  
March 20 1888 South dock Swansea Antelope 29, Evans Newquay  
March 23 1888 In River, Swansea Antelope 29, Evans Newquay  
March 24 1888 Swansea cleared Antelope 29, Evans for Newquay- 44 tons coal  
Hill & Co  
March 24 1888 Swansea sailed Antelope, Evans for Newquay  
March 26 1888 Newquay, Card. arrived Antelope, Evans from Swansea

April 9 1888 Swansea cleared Antelope 29, Evans for Newquay- 44 tons coal  
Hill & Co

April 10 1888 Newquay, Card. arrived Antelope, Evans from Porthcawl

April 16 1888 Newquay, Card. sailed Antelope, Evans for Swansea

April 16 1888 Newquay, Card. Put back Antelope, Evans

April 21 1888 Newquay, Card. sailed Antelope, Evans for Swansea

April 23 1888 Swansea sailed Antelope, Evans for Newquay

April 28 1888 Swansea sailed Antelope, Evans for Newquay

May 5 1888 Newquay, Card. arrived Antelope, Evans from Swansea

May 11 1888 Newquay, Card. sailed Antelope, Evans for Swansea

May 22 1888 Newquay, Card. arrived Antelope, Evans from Swansea

May 25 1888 Swansea sailed Antelope, Evans for Newquay

May 27 1888 Newquay, Card. arrived Antelope, Evans from Swansea

June 1 1888 Newquay, Card. sailed Antelope, Evans for Swansea

June 2 1888 Swansea cleared Antelope 29, Evans for Newquay- 44 tons coal  
S&J Hill

June 3 1888 Swansea arrived Antelope, Evans from Newquay - ballast

June 6 1888 Swansea sailed Antelope, Evans for Newquay

June 7 1888 Newquay, Card. arrived Antelope, Evans from Swansea

June 9 1888 Swansea cleared Antelope 29, Evans for Newquay- 44 tons coal  
S&J Hill

June 18 1888 Swansea arrived Antelope, Evans from Newquay

June 19 1888 In River, Swansea Antelope 29, Evans Newquay

June 19 1888 Swansea sailed Antelope, Evans for Newquay

June 23 1888 Swansea cleared Antelope 29, Evans for Newquay- 44 tons coal Hill

June 24 1888 Newquay, Card. arrived Antelope, Evans from Swansea

July 27 1888 Newquay, Card. arrived Antelope, Evans from Milford

August 2 1888 Swansea arrived Antelope, Evans from Newquay - ballast

August 3 1888 South dock Swansea Antelope 29, Evans Newquay  
August 3 1888 Swansea exports Antelope for Newquay- 44 tons coal S&J Hill  
August 5 1888 Swansea sailed Antelope, Evans for Newquay  
August 16 1888 Swansea arrived Antelope, Evans from Newquay  
August 17 1888 Swansea exports Antelope for Newquay- 44 tons coal  
August 18 1888 River, Swansea sailed Antelope, Evans for Newquay  
August 25 1888 Newquay, Card. arrived Antelope, Evans from Swansea  
August 25 1888 Swansea cleared Antelope 29, Evans for Newquay- 44 tons coal  
. S&J Hill  
September 5 1888 South dock Swansea arrived Antelope 29, from Newquay  
. - ballast  
September 6 1888 South dock Swansea Antelope 29, Evans Newquay  
September 6 1888 Swansea cleared Antelope 29, Evans for Newquay- 44 tons  
. coal S&J Hill  
September 8 1888 South dock Swansea Antelope 29, Evans Newquay  
September 8 1888 Swansea sailed Antelope, Evans for Newquay  
September 10 1888 Newquay, Card. arrived Antelope, Evans from Swansea  
September 17 1888 Porthcawl arrived Antelope, Evans from Cardigan - ballast  
September 18 1888 Porthcawl arrived Antelope, Evans from Newquay  
September 20 1888 Porthcawl sailed Antelope for Newquay  
September 23 1888 Newquay, Card. arrived Antelope, Evans from Porthcawl  
October 9 1888 Newquay, Card. sailed Antelope, Evans for Swansea  
October 11 1888 Swansea arrived Antelope, Evans from Newquay  
October 15 1888 Swansea sailed Antelope, Evans for Newquay  
October 17 1888 Newquay, Card. arrived Antelope, Evans from Swansea  
October 23 1888 Newquay, Card. sailed Antelope, Evans for Swansea  
October 25 1888 Swansea arrived Antelope, Evans from Newquay - ballast  
October 26 1888 Swansea exports Antelope for Newquay- 44 tons coal Hill

October 27 1888 In River, Swansea Antelope 29, Evans Newquay  
October 31 1888 In River, Swansea Antelope 29, Evans Newquay  
October 31 1888 Swansea sailed Antelope, Evans for Newquay  
December 9 1888 Newquay, Card. sailed Antelope, Evans for Porthcawl  
December 11 1888 Porthcawl arrived Antelope, Evans from Newquay  
December 14 1888 Porthcawl sailed Antelope for Newquay  
December 18 1888 Newquay, Card. arrived Antelope, Evans from Porthcawl  
December 30 1888 Swansea arrived Antelope, Evans from Newquay

### **1889**

January 7 1889 Swansea sailed Antelope, Evans for Newquay  
January 8 1889 Newquay, Card. arrived Antelope, Evans from Swansea  
February 21 1889 Newquay, Card. sailed Antelope, Evans for Swansea  
February 23 1889 Swansea arrived Antelope, Evans from Newquay – ballast  
February 26 1889 South Dock, Swansea Antelope 29, Evans Newquay  
February 28 1889 North Dock, Swansea sailed Antelope, Evans for Newquay  
March 3 1889 Newquay, Card. arrived Antelope, Evans from Swansea  
March 11 1889 Newquay, Card. sailed Antelope, Evans for Porthcawl  
March 18 1889 Porthcawl arrived Antelope, Evans from Newquay - ballast  
March 28 1889 Newquay, Card. arrived Antelope, Evans from Porthcawl  
April 7 1889 Newquay, Card. sailed Antelope, Evans for Swansea  
April 10 1889 Swansea arrived Antelope, Evans from Newquay  
April 11 1889 Swansea cleared Antelope 29, Evans for Newquay- 44 tons  
· coal S&J Hill  
April 13 1889 North Dock, Swansea sailed Antelope, Evans for Newquay  
April 16 1889 Newquay, Card. arrived Antelope, Evans from Swansea  
April 25 1889 Newquay, Card. sailed Antelope, Evans for Swansea

April 28 1889 Swansea arrived Antelope, Evans from Newquay - ballast  
May 4 1889 North Dock, Swansea sailed Antelope, Evans for Newquay  
May 7 1889 Newquay, Card. arrived Antelope, Evans from Swansea  
May 9 1889 Newquay, Card. sailed Antelope, Evans for Swansea  
May 16 1889 Newquay, Card. sailed Antelope, Evans for Swansea  
May 18 1889 Swansea arrived Antelope, Evans from Newquay  
May 22 1889 North Dock, Swansea sailed Antelope, Evans for Newquay  
May 25 1889 Newquay, Card. arrived Antelope, Evans from Swansea  
June 15 1889 Newquay, Card. sailed Antelope, Evans for Chester  
June 18 1889 Swansea arrived Antelope, Evans from Newquay  
w/e June 28 1889 Connahs Quay arrived Antelope, Captain Evans from Newquay  
w/e July 4 1889 Connahs Quay sailed Antelope, Evans for Newport  
July 4 1889 Swansea arrived Antelope, Evans from Newquay  
July 4 1889 Swansea sailed Antelope, Evans for Newquay  
July 17 1889 Newquay, Card. sailed Antelope, Evans for Swansea  
July 19 1889 Swansea arrived Antelope, Evans from Newquay - ballast  
July 22 1889 Swansea cleared Antelope 29, Evans for Newquay- 44 tons  
. coal S&J Hill  
July 26 1889 Newquay, Card. sailed Antelope, Evans for Swansea  
July 27 1889 South dock Swansea Antelope 29, Evans Newquay  
July 27 1889 Swansea sailed Antelope, Evans for Newquay  
August 20 1889 Swansea arrived Antelope, Evans from Newquay  
w/e August 23 1889 Caernarvon arrived Antelope, Evans from Newquay  
September 4 1889 Caernarvon sailed Antelope, Evans for Swansea  
September 4 1889 Swansea arrived Antelope, Evans from Caernarvon - slates  
September 6 1889 South dock Swansea Antelope 29, Evans Caernarvon

September 7 1889 Swansea cleared Antelope 29, Evans for Newquay- 44 tons  
coal S&J Hill

September 10 1889 North Dock, Swansea sailed Antelope, Evans for Newquay

October 1 1889 Newquay, Card. sailed Antelope, Evans for Porthcawl

October 3 1889 Porthcawl arrived Antelope, Evans from Newquay - ballast

October 12 1889 Porthcawl sailed Antelope for Newquay

October 21 1889 Newquay, Card. sailed Antelope, Evans for Aberayron

October 24 1889 Newquay, Card. arrived Antelope, Evans from Porthcawl

October 25 1889 Newquay, Card. sailed Antelope, Evans for Swansea

October 30 1889 Swansea arrived Antelope, Evans from Cardigan - ballast

October 31 1889 Swansea cleared Antelope 29, Evans for Newquay- 44 tons  
coal S&J Hill

November 2 1889 Swansea sailed Antelope, Evans for Newquay

November 9 1889 Newquay, Card. arrived Antelope, Evans from Swansea

November 18 1889 Newquay, Card. sailed Antelope, Evans for Swansea

November 24 1889 Swansea arrived Antelope, Evans from Newquay

November 20 1889 Swansea sailed Antelope, Evans for Newquay

November 26 1889 Swansea cleared Antelope 29, Evans for Newquay- 44 tons  
coal S&J Hill

November 29 1889 South dock Swansea Antelope 29, Evans Newquay

## **1890**

February 25 1890 Newquay, Card. sailed Antelope, Evans for Porthcawl

March 12 1890 Porthcawl sailed Antelope for Newquay

March 15 1890 Newquay, Card. arrived Antelope, Evans from Porthcawl

March 31 1890 Swansea arrived Antelope, Evans from Port Dinorwic

April 1 1890 Newquay, Card. sailed Antelope, Evans for Swansea

April 13 1890 Newquay, Card. arrived Antelope, Evans from Swansea

April 7 1890 Swansea sailed Antelope, Evans for Newquay

May 7 1890 Connah's Quay sailed Antelope, Captain Evans for Newquay

May 9 1890 Newquay, Card. sailed Antelope, Evans for Swansea

May 11 1890 Swansea arrived Antelope, Evans from Newquay

May 12 1890 Swansea cleared Antelope 29, Evans for Newquay- 47 tons  
. coal S&J Hill

May 19 1890 Swansea sailed Antelope, Evans for Newquay

May 25 1890 Swansea arrived Antelope, Evans from Cardigan

June 1 1890 Newquay, Card. arrived Antelope, Evans from Swansea

June 3 1890 Swansea arrived Antelope, Evans from Cardigan

June 6 1890 Swansea sailed Antelope, Evans for Newquay

June 7 1890 Newquay, Card. sailed Antelope, Evans for Swansea

June 11 1890 Swansea arrived Antelope, Evans from Newquay

June 13 1890 Swansea cleared Antelope 29, Evans for Newquay- 47 tons  
. coal S&J Hill

June 14 1890 Swansea sailed Antelope, Evans for Newquay

July 18 1890 Holyhead sailed Antelope, Evans for Newquay

July 26 1890 Newquay, Card. sailed Antelope, Evans for Swansea

July 29 1890 Swansea arrived Antelope, Evans from Newquay - ballast

August 2 1890 Swansea sailed Antelope, Evans for Newquay

August 8 1890 Newquay, Card. sailed Antelope, Evans for Swansea

August 9 1890 Newquay, Card. sailed Antelope, Evans for Milford

August 18 1890 Swansea sailed Antelope, Evans for Newquay

August 19 1890 Newquay, Card. arrived Antelope, Evans from Swansea

August 20 1890 Swansea arrived Antelope, Evans from Newquay

August 25 1890 Swansea sailed Antelope, Evans for Newquay

September 1 1890 Newquay, Card. arrived Antelope, Evans from Swansea

September 5 1890 Newquay, Card. sailed Antelope, Evans for Swansea

September 5 1890 Swansea sailed Antelope, Evans for Newquay

September 9 1890 Swansea arrived Antelope, Evans from Newquay - ballast

September 11 1890 Swansea cleared Antelope 29, Evans for Newquay- 44 tons  
. coal S&J Hill

September 11 1890 Swansea sailed Antelope, Evans for Newquay

September 26 1890 Porthcawl arrived Antelope from Cardigan

October 13 1890 Porthcawl arrived Antelope, Evans from Newquay

October 20 1890 Porthcawl sailed Antelope for Newquay -48 tons coal

October 24 1890 Newquay, Card. arrived Antelope, Evans from Porthcawl

## **1891**

March 1 1891 Swansea arrived Antelope, Evans from Newquay - ballast

March 3 1891 Swansea exports Antelope, Evans to Newquay 44 tons coal S&J Hill

March 5 1891 In River, Swansea Antelope 29, Evans Newquay

March 9 1891 Swansea sailed Antelope, Evans for Newquay

April 26 1891 Swansea arrived Antelope, Evans from Newquay

April 28 1891 Swansea exports Antelope, Evans to Newquay 44 tons coal S&J Hill

May 1 1891 In River, Swansea Antelope 29, Evans Newquay

May 4 1891 In River, Swansea Antelope 29, Evans Newquay

May 5 1891 Swansea sailed Antelope, Evans for Newquay

May 19 1891 Swansea exports Antelope, Evans to Newquay 44 tons coal S&J Hill

May 21 1891 Swansea sailed Antelope, Evans for Newquay

September 13 1891 Swansea arrived Antelope, Evans from Newquay - ballast

September 16 1891 Swansea cleared Antelope 29, Evans for Newquay- 44 tons  
. coal S&J Hill

September 18 1891 In River, Swansea Antelope 29, Evans Newquay

September 21 1891 Swansea sailed Antelope, Evans for Newquay

November 9 1891 Porthcawl sailed Antelope, Evans for Newquay – 50 tons coal

## **1892**

February 12 1892 Porthcawl arrived Antelope 29 from Aberayron - ballast

March 7 1892 Porthcawl arrived Antelope from Newquay - ballast

March 28 1892 Porthcawl arrived Antelope from Newquay – ballast

May 11 1892 Swansea arrived Antelope 29, Evans from Newquay – ballast

May 12 1892 South dock Swansea Antelope 29, Evans Newquay

May 12 1892 Swansea exports Antelope, Evans to Newquay 48 tons coal S&J Hill

May 22 1892 Swansea sailed Antelope, Evans for Newquay

June 6 1892 Porthcawl arrived Antelope from Newquay - ballast

June 16 1892 Swansea arrived Antelope, Evans from Newquay – ballast

June 18 1892 Swansea exports Antelope, Evans to Newquay 48 tons coal S&J Hill

June 22 1892 Swansea sailed Antelope, Evans for Newquay

July 12 1892 Swansea exports Antelope, Evans to Newquay 48 tons coal S&J Hill

July 18 1892 Swansea imports Antelope, Evans from Newquay - 32 tons old iron  
Forest & Co

July 22 1892 Swansea sailed Antelope, Evans for Newquay

July 31 1892 Swansea arrived Antelope, Evans from Newquay - 30 tons old iron  
Forest & Co

August 6 1892 Swansea sailed Antelope, Evans for Newquay

August 26 1892 Swansea arrived Antelope, Evans from Newquay - old iron

August 29 1892 Swansea exports Antelope, Evans to Newquay 48tons coal S&JHill

September 5 1892 Swansea sailed Antelope, Evans for Newquay

**1893**

March 3 1893 Swansea arrived Antelope, Evans from Newquay

March 7 1893 Swansea sailed Antelope, Evans for Newquay

March 10 1893 Newquay, Card. arrived Antelope, Evans from Swansea

March 23 1893 Port Dinorwic arrived Antelope from Cardigan

March 30 1893 Swansea arrived Antelope, Evans from Port Dinorwic - slates

April 7 1893 Swansea sailed Antelope, Evans for Newquay

April 19 1893 Newquay, Card. sailed Antelope, Evans for Connahs Quay

May 24 1893 Porthcawl arrived Antelope from Newquay - ballast

June 3 1893 Swansea arrived Antelope, Evans from Cardigan

June 6 1893 Swansea sailed Antelope, Evans for Newquay- 47 tons coal S & J Hill

June 18 1893 Swansea arrived Antelope, Evans from Newquay

June 20 1893 Swansea exports Antelope, Evans to Llangrannog – 44 tons coal  
S & J Hill

June 21 1893 Swansea sailed Antelope, Evans for Llangrannog

July 12 1893 Swansea arrived Antelope, Evans from Llangrannog -light

July 16 1893 Swansea sailed Antelope, Evans for Llangrannog

July 18 1893 Newquay, Card. arrived Antelope, Evans from Swansea

August 8 1893 Newquay, Card. sailed Antelope, Evans for Swansea

August 15 1893 Swansea arrived Antelope, Evans from Newquay

August 18 1893 Swansea sailed Antelope, Evans for Newquay

August 19 1893 Newquay, Card. arrived Antelope, Evans from Swansea

August 26 1893 Sailing from Cwm Tydu beach Antelope, Evans wrecked

## Appendix C            Locations of Ports of call

Aberaeron, previously anglicised as **Aberayron**, is a town, situated between Aberystwyth and Cardigan in Ceredigion, Wales.

**Abersoch** is a village in Llanengan in Gwynedd, Wales. It is on the east-facing south coast of the Llŷn Peninsula

**Bowling** is a village in West Dunbartonshire, Scotland, It lies on the north bank of the Firth of Clyde, between the towns of Clydebank and Dumbarton.

**Briton Ferry** is a town in the county borough of Neath Port Talbot, South Wales.

**Burry Port** is a small town west of Llanelli in Carmarthenshire, Wales, on the Loughor estuary.

**Carlingford** is a town on the Cooley Peninsula, between the waters of Carlingford Lough and the mountain of Slieve Foye, in the northeast of Ireland.

**Connah's Quay** known locally as "The Quay" is the largest town in Flintshire, lying within the Deeside conurbation along the River Dee, near the border with England

**Cwm tydu** Beach is a delightful little beach that sits to the south-west of New Quay. Cwm tydu is home to an old lime kiln that has been lovingly restored.

**Hayle** is a small town and cargo port in west Cornwall, United Kingdom. It is situated at the mouth of the Hayle River and is approximately seven miles northeast of Penzance.

**Helford** is a village on the south bank of the Helford River in west Cornwall, England, approximately five miles south-southwest of Falmouth

**Kenmare** is a small town in the south of County Kerry, Ireland at the head of Kenmare Bay.

**Llangrannog** is a village in Ceredigion, Wales, 6 miles southwest of New Quay, it lies in the narrow valley of the River Hawen.

**Mostyn** is a village in Flintshire, Wales, and electoral ward lying on the estuary of the River Dee, located near the town of Holywell.

**New Quay** is a picturesque seaside town on the Cardigan Bay coast of West Wales.

**Pembrey** is a village in Carmarthenshire, Wales, situated between Burry Port and Kidwelly, overlooking Carmarthen Bay

**Porthcawl** is a town on the south coast of Wales in the county borough of Bridgend, 25 miles west of the capital city, Cardiff and 19 miles southeast of Swansea.

Y Felinheli, formerly known in English as **Port Dinorwic**, is a village, beside the Menai Strait between Bangor and Caernarfon in Gwynedd, northwest Wales.

**Porthdinllaen** is a small coastal village in the Dwyfor locality on the Llŷn Peninsula within Gwynedd, Wales, located on a small promontory, and historically in Caernarfonshire.

Porthmadog, known before 1974 in its anglicised **Portmadoc** form is a Welsh coastal town and community in the Eifionydd area of Gwynedd and the historic county of Caernarfonshire.

**Pwllheli** is a market town and community of the Llŷn Peninsula in Gwynedd, north-western Wales.

**Ramsey Sound** is located at the western end of St David's Peninsula between Ramsey Island and the mainland. It is a dynamic stretch of water with strong tidal currents and hazardous rocks.

**Scrabster** is a small settlement on Thurso Bay in Caithness on the north coast of Scotland. It is some 1 1/2 miles from Thurso, 22 1/2 miles from Wick, 112 miles from Inverness

**Solva** is a village in Pembrokeshire, Wales. The village comprises principally Lower Solva and Upper Solva.





Fig. 3 Map of Wales showing Ports

- Milford
  Gloucester
  Newquay, Card.
  Connah's Quay
  Bristol
- Porthdinllaen
  Burry Port
  Britton Ferry
  Saundersfoot
  Pwllheli
- Portmadoc
  Runcorn
  Mostyn
  Ramsey Sound
  Cardigan
- Caernarvon
  Aberdovey
  Pembrey



Fig. 4 Map of the United Kingdom

-

## Appendix D Mercantile Navy List

Antelope Official number 56402 Registry held at the National Archives ref.BT 110/5/49. Register closed 1893, not available on line.

### Mercantile Navy List

1860 until 1869 no record

1869

17427	†Ant, Gainsborough	..	24	14	R. L. Furley, Hull.
1548	Ant, Lancaster	..	54	..	James Fisher, Barrow, Lancashire.
18005	Ant, Leith	M.K.B.H	23	..	David Landsman, Granton, Edinburgh.
51066	Ant, Leith	W.L.R.H	61	..	Mungo Campbell Gibson, Leith.
18531	Ant, Lerwick	..	25	..	William Hay, Lerwick.
22818	†Ant, Liverpool	..	65	60	Rock Ferry Company (Limited), Rock Fer
25704	Ant, Liverpool	P.H.C.N	23	..	Edward Williams, Liverpool.
5261	Ant, Middlesbro'	..	26	..	Balckow and Vaughan, Middlesbro'.
10330	Ant, Milford	K.N.B.Q	21	..	John Williams, Solva, Pembroke.
18906	Ant, Milford	..	24	..	George Thomas, Pembroke Docks, Pembr
33645	Ant, New Carlisle	R.G.D.W	52	..	James Robin, Jersey.
17278	Ant, Preston	..	38	..	Thomas Iddon, Tarleton, Lancashire.
7983	Ant, Rochester	..	18	..	George J. Williamson, Lower Thames St.,
22430	Ant, Scarborough	N.L.K.G	103	..	Jas. Dodds, Scarborough.
2845	Ant, Sunderland	H.Q.T.N	24	..	Richard Iliff, Sunderland.
40148	Ant, Trinidad	..	18	..	Joseph Pence, Port of Spain, Trinidad.
21701	Ant, Wigtown	N.H.K.R	27	..	Wm. Anderson, Bladnock Bay, Wigtown.
6537	Ant, Yarmouth	..	52	..	Garson Blake, Yarmouth, Norfolk.
28955	Antagonist, Dartmouth	Q.C.P.H	145	..	Edward Vittery, Brixham, Devon.
28261	Antagonist, Hull	..	41	..	Joseph Nichols, junr., Hull.
11995	Antagonist, London	..	44	..	Hewett & Co., 43, Trinity Sq., Tower Hill,
14492	Antagonist, Plymouth	L.N.J.C	404	..	Richard Hill, 9, South Down Place, Plym
9143	Antagonist, Shields	K.G.C.N	288	..	Philip Dodds, North Shields.
11383	Antagonist, Southampton	..	18	..	John Gillett, Gloucester.
48806	Antarctic, Liverpool	V.W.H.P	1252	..	Tapscott and Co., Liverpool.
36036	Antares, Halifax, N.S.	R.T.D.J	41	..	Donald Murray, Halifax, N.S.
55783	Antecede, St. John's, Newfoundland	..	41	..	William Killegrew, St. John's, Newfoundl
48140	Antecello, Halifax, N.S.	V.R.M.G	271	..	John M. Blaikie, Londonderry, Nova Scoti
56402	Antelope, Aberystwith	..	29	..	David Evans, New Quay, Cardiganshire.
37032	Antelope, Cape Town	S.C.H.R	1139	..	John G. Dale, Cape Town.
4168	Antelope, Carnarvon	J.B.K.T	83	..	Owen .., Nevin, Carnarvon.
18181	Antelope, Colchester	..	53	..	Thomas .., Brightlingsea, Essex.
7179	Antelope, Dundee	..	32	..	The Fr .. of Masters and Seamen, D
35876	Antelope, Halifax, N.S.	R.S.K.P	59	..	James .., Old Barns, Colchester, N.S.
36195	Antelope, Halifax, N.S.	R.T.Q.W	25	..	John S .., Chezetcook, N.S.
46624	Antelope, Liverpool	V.K.G.F	209	..	Alexan .. Shand, Liverpool.
50487	Antelope, Liverpool	..	56	..	Joseph .., Wharton, Chester.
24768	Antelope, London	..	61	..	Jas. T .. Morgan, Barking, Essex.
36738	Antelope, Lyttelton, N.Z.	S.B.D.G	17	..	James .., Lyttelton, N.Z.
18964	Antelope, Milford	..	22	..	C. G. Ramsey, Treffgarne Hall, Pembrokes
56097	†Antelope, Newcastle	..	24	20	Beauchamp Tower, Newcastle-on-Tyne.
30653	Antelope, Penang	..	180	..	Ang Ah-Quah, Beech Street, Penang.
16961	Antelope, Portsmouth	M.Q.B.G	20	..	Joseph Redman, West Cowes, Isle of Wigl
35300	Antelope, St. Andrew's, N.B.	Q.L.R.K	83	..	Walter Calder, Deer Island, New Brunswic
36662	Antelope, St. John, N.B.	..	96	..	David Bostwick, Wickham, Queen's Co., Ne

1870 No changes

1871, rig shown, smack

1872, 1873, 1874, 1875 No changes

1876 owner changes to Evan Griffiths, Llwyndafydd, Cardiganshire

1878 owner now David Davies, Queens Hotel, New Quay, Cardiganshire

1879, 1880 No changes

1882 owner now Enoch Thomas, High Ter., New Quay, Cardiganshire

1883,1884,1885, 1886, 1887 No Changes

1888 Owner now Thos. Evans, 20 High Ter., New Quay, Cardiganshire

1889 now rigged as ketch no other changes

1890 no changes

1891 managing agent now Henry Evans 12 High Ter., New Quay, Cardiganshire

1892, 1893, 1894 no changes

1895 no entry

## Appendix E Crew Lists

Vessel ANTELOPE Dates 1/1/1868 to 30/6/1868

Official number 56402 List type Registered ABERYSTWYTH

Master EVAN GRIFFITHS Archives National Library of Wales  
LLWYNDAFYDD, CARDIGANSHIRE Archives reference 55/1/1

### Crew names

Forename	Surname	Age/DOB	Birthplace	Capacity	Previous vessel
EVAN	GRIFFITHS	39	LLWYNDAFYDD, CARD.	MASTER	FIRST VESSEL
EVAN	DAVIES	55	NEWQUAY, CARD.	MATE	LOYALTY, ABERYSTWYTH, 1866
JENKIN	DAVIES	14	NEWQUAY, CARD.	BOY	EAGLET, CARDIGAN, 1868

Vessel ANTELOPE Dates 1/7/1868 to 31/12/1868

Official number 56402 Registered ABERYSTWYTH

Master EVAN GRIFFITH Archives National Library of Wales  
LLWYNDAFYDD, CARDIGANSHIRE Archives reference 55/1/2

### Crew names

Forename	Surname	Age/DOB	Birthplace	Capacity	Previous vessel
EVAN	GRIFFITH	39	LLWYNDAFYDD, CARD.	MASTER	ANTELOPE, ABERYSTWYTH
EVAN	DAVIES	58	CARDIGANSHIRE	MATE	ANTELOPE, ABERYSTWYTH
JENKIN	DAVIES	14	NEWQUAY, CARD.	BOY	ANTELOPE, ABERYSTWYTH

Vessel ANTELOPE Dates 1/1/1869 to 30/6/1869

Official number 56402 Registered ABERYSTWYTH

Master EVAN GRIFFITHS Archives National Library of Wales  
LLWYNDAFYDD, CARDIGANSHIRE Archives reference 55/2/1

## Crew names

Forename	Surname	Age/DOB	Birthplace	Capacity	Previous vessel
EVAN	GRIFFITHS	39	CARDIGANSHIRE	MASTER	ANTELOPE, ABERYSTWYTH
EVAN	DAVIES	58	CARDIGANSHIRE	MATE	ANTELOPE, ABERYSTWYTH
DAVID	DAVIES	14	CARDIGANSHIRE	BOY	FIRST SHIP

Vessel ANTELOPE Dates 1/7/1860 to 31/12/1869

Official number 56402 Registered ABERYSTWYTH

Master EVAN GRIFFITHS Archives National Library of Wales

LLWYNDAFYDD, CARDIGANSHIRE Archives reference 55/2/2

## Crew names

Forename	Surname	Age/DOB	Birthplace	Capacity	Previous vessel
EVAN	GRIFFITHS	40	LLWYNDAFYDD, CARD.	MASTER	ANTELOPE, ABERYSTWYTH
EVAN	DAVIES	60	NEWQUAY, CARD.	MATE	ANTELOPE, ABERYSTWYTH
DAVID	DAVIES	15	NEWQUAY, CARD.	BOY	ANTELOPE, ABERYSTWYTH

Vessel ANTELOPE Dates 1/1/1870 to 30/6/1870

Official number 56402 Registered ABERYSTWYTH

Master EVAN GRIFFITHS Archives National Library of Wales

LLWYNDAFYDD, CARDIGANSHIRE Archives reference 55/3/1

## Crew names

Forename	Surname	Age/DOB	Birthplace	Capacity	Previous vessel
EVAN	GRIFFITHS	39	LLWYNDAFYDD	MASTER	ANTELOPE, ABERYSTWYTH
JOHN	JONES	45	LLWYNDAFYDD	MATE	ANTELOPE, ABERYSTWYTH, 1869

Vessel ANTELOPE Dates 1/7/1870 to 31/12/1870

Official number 56402 Registered ABERYSTWYTH

Master EVAN GRIFFITHS Archives National Library of Wales

LLWYNDAFYDD, CARDIGANSHIRE Archives reference 55/3/1

## Crew names

Forename	Surname	Age/DOB	Birthplace	Capacity	Previous vessel
EVAN	GRIFFITHS	39	LLWYNDAFYDD	MASTER	ANTELOPE, ABERYSTWYTH
JOHN	JONES	45	LLWYNDAFYDD	MATE	ANTELOPE, ABERYSTWYTH, 1869

Vessel ANTELOPE Dates 1/1/1871 to 30/6/1871

Official number 56402 Registered ABERYSTWYTH

Master EVAN GRIFFITHS Archives National Library of Wales  
 LLWYNDAFYDD, CARDIGANSHIRE Archives reference 55/4/1

#### Crew names

Forename	Surname	Age/DOB	Birthplace	Capacity	Previous vessel
EVAN	GRIFFITHS	42	NEW QUAY, CARD.	MASTER	ANTELOPE, ABERYSTWYTH
JOHN	EVANS	52	NEW QUAY, CARD.	MATE	ANGELINA, CARDIGAN

Vessel ANTELOPE Dates 1/7/1871 to 31/12/1871

Official number 56402 Registered ABERYSTWYTH

Master EVAN GRIFFITHS Archives National Library of Wales  
 NEW QUAY Archives reference 55/4/2

#### Crew names

Forename	Surname	Age/DOB	Birthplace	Capacity	Previous vessel
EVAN	GRIFFITHS	42	CARDIGANSHIRE	MASTER	ANTELOPE, ABERYSTWYTH
EVAN	DAVIES	60	CARDIGANSHIRE	MATE	ANTELOPE, ABERYSTWYTH

Vessel ANTELOPE Dates 1/1/1872 to 30/6/1872

Official number 56402 Registered ABERYSTWYTH

Master EVAN GRIFFITHS Archives National Library of Wales  
 NEW QUAY Archives reference 55/4/2

#### Crew names

Forename	Surname	Age/DOB	Birthplace	Capacity	Previous vessel
EVAN	GRIFFITHS	42	CARDIGANSHIRE	MASTER	ANTELOPE, ABERYSTWYTH
EVAN	DAVIES	60	CARDIGANSHIRE	MATE	ANTELOPE, ABERYSTWYTH

Vessel ANTELOPE Dates 1/7/1872 to 31/12/1872

Official number 56402 Registered ABERYSTWYTH

Master EVAN GRIFFITHS Archives National Library of Wales

NEW QUAY Archives reference 55/4/2

## Crew names

Forename	Surname	Age/DOB	Birthplace	Capacity	Previous vessel
EVAN	GRIFFITHS	42	CARDIGANSHIRE	MASTER	ANTELOPE, ABERYSTWYTH
EVAN	DAVIES	60	CARDIGANSHIRE	MATE	ANTELOPE, ABERYSTWYTH

Vessel ANTELOPE Dates 1/1/1873 to 30/6/1873

Official number 56402 Registered ABERYSTWYTH

Master EVAN GRIFFITHS Archives National Library of Wales

NEW QUAY Archives reference 55/6/1

## Crew names

Forename	Surname	Age/DOB	Birthplace	Capacity	Previous vessel
EVAN	GRIFFITHS	43	NEW QUAY	MASTER	ANTELOPE, ABERYSTWYTH
EVAN	DAVIES	60	NEW QUAY	MATE	ANTELOPE, ABERYSTWYTH
EVAN	PHILLIPS	13	NEW QUAY	BOY	FIRST SHIP

Vessel ANTELOPE Dates 1/7/1873 to 31/12/1873

Official number 56402 Registered ABERYSTWYTH

Master EVAN GRIFFITHS Archives National Library of Wales

LLWYNDAFYDD, CARDIGANSHIRE Archives reference 55/6/2

## Crew names

Forename	Surname	Age/DOB	Birthplace	Capacity	Previous vessel
EVAN	GRIFFITHS	44	NEW QUAY, CARD.	MASTER	ANTELOPE, ABERYSTWYTH
EVAN	DAVIES	60	NEW QUAY	MATE	ANTELOPE, ABERYSTWYTH
EVAN	PHILLIPS	13	NEW QUAY	MATE	ATALANTA, CARDIGAN

Vessel	ANTELOPE	Dates	1/1/1874 to 30/6/1874
Official number	56402	Registered	ABERYSTWYTH
Master	EVAN GRIFFITHS NEWQUAY	Archives	National Library of Wales Archives reference 55/7/1

## Crew names

Forename	Surname	Age/DOB	Birthplace	Capacity	Previous vessel
EVAN	GRIFFITHS	45	CARDIGAN	MASTER	ANTELOPE, ABERYSTWYTH
DAVID	EVANS	65	CARDIGAN	MATE	ANTELOPE, ABERYSTWYTH

Vessel	ANTELOPE	Dates	1/7/1874 to 31/12/1874
Official number	56402	Registered	ABERYSTWYTH
Master	EVAN GRIFFITHS LLWYNDAFYDD, CARDIGANSHIRE	Archives	National Library of Wales Archives reference 55/7/2

## Crew names

Forename	Surname	Age/DOB	Birthplace	Capacity	Previous vessel
EVAN	GRIFFITHS	45	NEWQUAY, CARD.	MASTER	ANTELOPE, ABERYSTWYTH
DAVID	EVANS	67	NEWQUAY, CARD.	ABLE SEAMAN	ANTELOPE, ABERYSTWYTH
EVAN	DAVIES	59	NEWQUAY, CARD.	ABLE SEAMAN	GEORGE EVANS, ABERYSTWYTH, 1873

Crew list for 1875 may be held at the Maritime Museum

1876 held at The National Archives BT99/1111

1877 held at The National Archives BT99/1151

Vessel ANTELOPE Dates 1/1/1878 to 30/6/1878  
 Official number 56402 List type Registered ABERYSTWYTH  
 Master ENOCH THOMAS Archives National Library of Wales  
 HIGH TERRACE, NEW QUAY Archives reference 55/8/1

## Crew names

Forename	Surname	Age/DOB	Birthplace	Capacity	Previous vessel
ENOCH	THOMAS	57	NEW QUAY, CARD.	MASTER	ANTELOPE, ABERYSTWYTH
BENJAMIN	DAVIES	37	NEW QUAY, CARD.	MATE	ANTELOPE, ABERYSTWYTH
WILLIAM	EVANS	14	NEW QUAY, CARD.	BOY	FIRST SHIP
DAVID JAMES	DAVIES	14	NEW QUAY, CARD.	BOY	FIRST SHIP

Vessel ANTELOPE Dates 1/7/1878 to 31/12/1878  
 Official number 56402 Registered ABERYSTWYTH  
 Master BENJAMIN DAVIES Archives National Library of Wales  
 NEW QUAY, CARDIGANSHIRE Archives reference 55/8/2

## Crew names

Forename	Surname	Age/DOB	Birthplace	Capacity	Previous vessel
BENJAMIN	DAVIES	46	NEW QUAY, CARD.	MASTER	ANTELOPE, ABERYSTWYTH
JOHN	JONES	55	NEW QUAY, CARD.	MATE	HETTY MARY, ABERYSTWYTH
DAVID	JONES	14	NEW QUAY, CARD.	BOY	ANTELOPE, ABERYSTWYTH

Vessel ANTELOPE Dates 1/1/1879 to 30/6/1879  
 Official number 56402 Registered ABERYSTWYTH  
 Master ENOCH THOMAS Archives National Library of Wales

HIGH TERRACE,  
NEW QUAY  
Crew names

Archives reference 55/9/1

Forename	Surname	Age/DOB	Birthplace	Capacity	Previous vessel
ENOCH	THOMAS	58	NEW QUAY, CARD.	MASTER	ANTELOPE, ABERYSTWYTH
THOMAS	EVANS	54	NEW QUAY, CARD.	MATE	NOT KNOWN, 1878
THOMAS	JONES	14	NEW QUAY, CARD.	BOY	FIRST SHIP

Vessel ANTELOPE

Dates 1/7/1879 to 31/12/1879

Official number 56402

Registered ABERYSTWYTH

Master ENOCH THOMAS

Archives National Library of Wales

## HIGH TERRACE, NEW QUAY

Archives reference 55/9/2

## Crew names

Forename	Surname	Age/DOB	Birthplace	Capacity	Previous vessel
ENOCH	THOMAS	58	NEW QUAY, CARD.	MASTER	ANTELOPE, ABERYSTWYTH
DAVID	DAVIES	56	NEW QUAY, CARD.	MATE	ANTELOPE, ABERYSTWYTH,

Vessel ANTELOPE

Dates 1/1/1880 to 30/6/1880

Official number 56402

Registered ABERYSTWYTH

Master ENOCH THOMAS

Archives National Library of Wales

## HIGH TERRACE, NEW QUAY

Archives reference 55/9/2

## Crew names

Forename	Surname	Age/DOB	Birthplace	Capacity	Previous vessel
ENOCH	THOMAS	58	NEW QUAY, CARD.	MASTER	ANTELOPE, ABERYSTWYTH
DAVID	DAVIES	56	NEW QUAY, CARD.	MATE	ANTELOPE, ABERYSTWYTH,

Vessel ANTELOPE

Dates 1/7/1880 to 31/12/1880

Official number 56402

Registered ABERYSTWYTH

Master ENOCH THOMAS

Archives National Library of Wales

## HIGH TERRACE, NEW QUAY

Archives reference 55/9/2

## Crew names

Forename	Surname	Age/DOB	Birthplace	Capacity	Previous vessel
ENOCH	THOMAS	58	NEW QUAY, CARD.	MASTER	ANTELOPE, ABERYSTWYTH
DAVID	DAVIES	56	NEW QUAY, CARD.	MATE	ANTELOPE, ABERYSTWYTH,

Vessel ANTELOPE Dates 1/1/1881 to 30/6/1881

Official number 56402 Registered ABERYSTWYTH

Master ENOCH THOMAS Archives National Library of Wales

## HIGH TERRACE,NEW QUAY

Archives reference 55/11/

## Crew names

Forename	Surname	Age/DOB	Birthplace	Capacity	Previous vessel
ENOCH	THOMAS	1822	NEW QUAY, CARD.	MASTER	ANTELOPE, ABERYSTWYTH
HENRY	DAVIES	1851	NEW QUAY, CARD.	MATE	ANTELOPE, ABERYSTWYTH

Vessel ANTELOPE Dates 1/7/1881 to 31/12/1881

Official number 56402 Registered ABERYSTWYTH

Master ENOCH THOMAS Archives National Library of Wales

## HIGH TERRACE,NEW QUAY

Archives reference 55/11/

## Crew names

Forename	Surname	Age/DOB	Birthplace	Capacity	Previous vessel
ENOCH	THOMAS	1822	NEW QUAY, CARD.	MASTER	ANTELOPE, ABERYSTWYTH
HENRY	DAVIES	1851	NEW QUAY, CARD.	MATE	ANTELOPE, ABERYSTWYTH

Vessel ANTELOPE Dates 1/1/1882 to 30/6/1882

Official number 56402 Registered ABERYSTWYTH

Master HENRY DAVIES Archives National Library of Wales

## PENYGOYLAN, NEW QUAY

Archives reference 55/12/1

## Crew names

Forename	Surname	Age/DOB	Birthplace	Capacity	Previous vessel
HENRY	DAVIES	1857	NEWQUAY	MASTER	ANTELOPE, ABERYSTWYTH
JOHN	JONES	1820	NEWQUAY	ABLE SEAMAN	ANTELOPE, ABERYSTWYTH
JOHN	LEWIS	1870	NEWQUAY	COOK	

Vessel ANTELOPE Dates 1/7/1882 to 31/12/1882

Official number 56402 Registered ABERYSTWYTH

Master HENRY DAVIES Archives National Library of Wales

## PENYGOYLAN, NEW QUAY, CARD

Archives reference 55/12/2

## Crew names

Forename	Surname	Age/DOB	Birthplace	Capacity	Previous vessel
HENRY	DAVIES	1851	NEWQUAY, CARD.	MASTER	ANTELOPE, ABERYSTWYTH
JOHN	OWEN	1870	NEWQUAY, CARD.	MATE	ANTELOPE, ABERYSTWYTH
JOHN	DAVIES	1871	NEWQUAY, CARD.	BOY	FIRST SHIP
JOHN	JENKINS	1825	NEWQUAY, CAR	MATE	MAELOTA, ABERYSTWYTH

Vessel ANTELOPE Dates 1/7/1883 to 31/12/1883

Official number 56402 Registered ABERYSTWYTH

Master HENRY DAVIES Archives National Library of Wales

## PENYGOYLAN, NEW QUAY, CARD.

Archives reference 55/13/1

## Crew names

Forename	Surname	Age/DOB	Birthplace	Capacity	Previous vessel
HENRY	DAVIES	33	NEWQUAY	MASTER	ANTELOPE, ABERYSTWYTH
JOHN	JENKINS	59	NEWQUAY	MATE	ANTELOPE, ABERYSTWYTH

Vessel ANTELOPE Dates 1/1/1884 to 30/6/1884

Official number 56402 Registered ABERYSTWYTH

Master HENRY DAVIES Archives National Library of Wales  
PENYGOYLAN, NEW QUAY Archives reference 55/14/1

## Crew names

Forename	Surname	Age/DOB	Birthplace	Capacity	Previous vessel
HENRY	DAVIES	1851	NEW QUAY	MASTER	ANTELOPE, ABERYSTWYTH
EVAN	DAVIES	1857	NEW QUAY	MATE	UNKNOWN
JOHN	THOMAS	1850	ABERAYRON	MATE	AGNES CAIRNS, ABERYSTWYTH

Vessel ANTELOPE Dates 1/7/1884 to 31/12/1884

Official number 56402 Registered ABERYSTWYTH

Master HENRY DAVIES Archives National Library of Wales  
NEWQUAY, CARDIGANSHIRE Archives reference 55/14/2

## Crew names

Forename	Surname	Age/DOB	Birthplace	Capacity	Previous vessel
HENRY	DAVIES	1851	NEWQUAY	MASTER	ANTELOPE, ABERYSTWYTH
DAVID	JONES	1841	NEWQUAY	MATE	ANTELOPE, ABERYSTWYTH

1885 crew list may be held at the Maritime Museum

Vessel ANTELOPE Dates 1/1/1886 to 30/6/1886

Official number 56402 Registered ABERYSTWYTH

Master HENRY DAVIES Archives National Library of Wales  
NEWQUAY, CARDIGANSHIRE Archives reference 55/14/2

## Crew names

Forename	Surname	Age/DOB	Birthplace	Capacity	Previous vessel
HENRY	DAVIES	1851	NEWQUAY	MASTER	ANTELOPE, ABERYSTWYTH
DAVID	JONES	1841	NEWQUAY	MATE	ANTELOPE, ABERYSTWYTH

Vessel ANTELOPE Dates 1/7/1886 to 31/12/1886

Official number 56402 Registered ABERYSTWYTH

Master HENRY DAVIES Archives National Library of Wales  
 NEWQUAY, CARDIGANSHIRE Archives reference 55/14/2

## Crew names

Forename	Surname	Age/DOB	Birthplace	Capacity	Previous vessel
HENRY	DAVIES	1851	NEWQUAY	MASTER	ANTELOPE, ABERYSTWYTH
DAVID	JONES	1841	NEWQUAY	MATE	ANTELOPE, ABERYSTWYTH

Vessel ANTELOPE Dates 1/1/1887 to 30/6/1887

Official number 56402 Registered ABERYSTWYTH

Master HENRY EVANS Archives National Library of Wales  
 NEWQUAY, CARD Archives reference 55/16/1

## Crew names

Forename	Surname	Age/DOB	Birthplace	Capacity	Previous vessel
HENRY	EVANS	1841	NEWQUAY, CARD	MASTER	ANTELOPE, ABERYSTWYTH
THOMAS	EVANS	1827	NEWQUAY, CARD	ABLE SEAMAM	ANTELOPE, ABERYSTWYTH

Vessel ANTELOPE Dates 1/7/1887 to 31/12/1887

Official number 56402 Registered ABERYSTWYTH

Master HENRY EVANS Archives National Library of Wales  
 NEWQUAY, CARD. Archives reference 55/16/1

## Crew names

Forename	Surname	Age/DOB	Birthplace	Capacity	Previous vessel
HENRY	EVANS	1841	NEWQUAY, CARD	MASTER	ANTELOPE, ABERYSTWYTH
THOMAS	EVANS	1827	NEWQUAY, CARD	ABLE SEAMAM	ANTELOPE, ABERYSTWYTH

Vessel ANTELOPE Dates 1/1/1888 to 30/6/1888

Official number 56402 Registered ABERYSTWYTH

Master HENRY EVANS Archives National Library of Wales  
 NEWQUAY, CARD. Archives reference 55/16/1

## Crew names

Forename	Surname	Age/DOB	Birthplace	Capacity	Previous vessel
HENRY	EVANS	1841	NEWQUAY, CARD	MASTER	ANTELOPE, ABERYSTWYTH
THOMAS	EVANS	1827	NEWQUAY, CARD	ABLE SEAMAN	ANTELOPE, ABERYSTWYTH

Vessel ANTELOPE Dates 1/7/1888 to 31/12/1888

Official number 56402 List type Registered ABERYSTWYTH

Master HENRY EVANS Archives National Library of Wales

12 HIGH TERRACE, NEW QUAY Archives reference 55/17/2

## Crew names

Forename	Surname	Age/DOB	Birthplace	Capacity	Previous vessel
HENRY	EVANS	1840	NEW QUAY, CARD.	MASTER	ANTELOPE, ABERYSTWYTH
THOMAS	EVANS	1824	NEW QUAY, CARD.	MATE	ANTELOPE, ABERYSTWYTH

Vessel ANTELOPE Dates 1/1/1889 to 30/6/1889

Official number 56402 Registered ABERYSTWYTH

Master HENRY EVANS Archives National Library of Wales

12 HIGH TERRACE NEW QUAY, Archives reference 55/18/1

## Crew names

Forename	Surname	Age/DOB	Birthplace	Capacity	Previous vessel
HENRY	EVANS	1840	NEWQUAY, CARD	MASTER	ANTELOPE, ABERYSTWYTH
BENJAMIN	DAVIES	1844	NEWQUAY, CARD	MATE	MONMOUTHSHIRE, NEWPORT

Vessel ANTELOPE Dates 1/7/1889 to 31/12/1889

Official number 56402 Registered ABERYSTWYTH

Master HENRY EVANS Archives National Library of Wales

12 HIGH TERRACE, NEWQUAY Archives reference 55/18/2

## Crew names

Forename	Surname	Age/DOB	Birthplace	Capacity	Previous vessel
HENRY	EVANS	1840	NEW QUAY	MASTER	ANTELOPE, ABERYSTWYTH
BENJAMIN	DAVIES	1845	NEW QUAY	MATE	CELYNEN, NEWPORT, 1889
DAVID	JONES	1840	NEW QUAY	MATE	JANE, ABERYSTWYTH, 1889

Vessel	ANTELOPE	Dates	1/1/1890 to 30/6/1890
Official number	56402	Registered	ABERYSTWYTH
Master	HENRY EVANS	Archives National Library of Wales	
	NEW QUAY	Archives reference	55/19/1

## Crew names

Forename	Surname	Age/DOB	Birthplace	Capacity	Previous vessel
HENRY	EVANS	49	NEW QUAY	MASTER	ANTELOPE, ABERYSTWYTH
DAVID	JONES	49	NEW QUAY	MATE	ANTELOPE, ABERYSTWYTH
DAVID	EVANS	15	NEW QUAY	BOY	ANTELOPE, ABERYSTWYTH

Vessel	ANTELOPE	Dates	1/7/1890 to 31/12/1890
Official number	56402	Registered	ABERYSTWYTH
Master	HENRY EVANS	Archives National Library of Wales	
	12 HIGH TERRACE, NEWQUAY	Archives reference	55/19/2

## Crew names

Forename	Surname	Age/DOB	Birthplace	Capacity	Previous vessel
HENRY	EVANS	1840	NEWQUAY	MASTER	ANTELOPE, ABERYSTWYTH
DAVID	JONES	1840	NEWQUAY	MATE	ANTELOPE, ABERYSTWYTH
DAVID	EVANS	1875	NEWQUAY	BOY	ANTELOPE, ABERYSTWYTH

Vessel	ANTELOPE	Dates	1/1/1891 to 30/6/1891
Official number	56402	Registered	ABERYSTWYTH

Master HENRY EVANS  
Wales

Archives National Library of

12 HIGH TERRACE, NEW QUAY

Archives reference 55/20/1

Crew names

Forename	Surname	Age/DOB	Birthplace	Capacity	Previous vessel
HENRY	EVANS	1840	NEW QUAY	MASTER	ANTELOPE, ABERYSTWYTH
DAVID	JONES	1838	NEW QUAY	MATE	BESS MITCHELL, SWANSEA

Vessel ANTELOPE

Dates 1/7/1891 to 31/12/1891

Official number 56402

Registered ABERYSTWYTH

Master HENRY EVANS

Archives National Library of Wales

12 HIGH TERRACE, NEW QUAY

Archives reference 55/20/2

Crew names

Forename	Surname	Age/DOB	Birthplace	Capacity	Previous vessel
HENRY	EVANS	1840	NEW QUAY, CARD	MASTER	ANTELOPE, ABERYSTWYTH
JAMES	THOMAS	1838	NEW QUAY, CARD	MATE	ANTELOPE, ABERYSTWYTH

Vessel ANTELOPE

Dates 1/1/1892 to 30/6/1892

Official number 56402

Registered ABERYSTWYTH

Master HENRY EVANS

Archives National Library of Wales

12 HIGH TERRACE, NEW QUAY

Archives reference 55/21/1

Crew names

Forename	Surname	Age/DOB	Birthplace	Capacity	Previous vessel
HENRY	EVANS	1840	NEW QUAY, CARD	MASTER	ANTELOPE, ABERYSTWYTH
JAMES	THOMAS	1838	NEW QUAY, CARD	MATE	ANTELOPE, ABERYSTWYTH

Vessel ANTELOPE

Dates 1/7/1892 to 31/12/1892

Official number 56402

Registered ABERYSTWYTH

Master HENRY EVANS

Archives National Library of Wales

12 HIGH TERRACE, NEW QUAY

Archives reference 55/21/2

## Crew names

Forename	Surname	Age/DOB	Birthplace	Capacity	Previous vessel
HENRY	EVANS	1840	NEW QUAY, CARD	MASTER	ANTELOPE, ABERYSTWYTH
JAMES	THOMAS	1838	NEW QUAY, CARD	MATE	ANTELOPE, ABERYSTWYTH

Vessel ANTELOPE Dates 1/1/1893 to 30/6/1893

Official number 56402 Registered ABERYSTWYTH  
 Master DAVID EVANS Archives National Library of Wales

HIGH TERRACE, NEW QUAY

Archives reference 55/22/1

## Crew names

Forename	Surname	Age/DOB	Birthplace	Capacity	Previous vessel
DAVID	EVANS	1874	NEWQUAY	MASTER	IONE, SWANSEA, 1892
HENRY	EVANS	1840	NEWQUAY	MATE	ANTELOPE, ABERYSTWYTH

Vessel ANTELOPE Dates 1/7/1893 to 31/12/1893

Official number 56402 Registered ABERYSTWYTH

Master HENRY EVANS Archives National Library of  
 Wales

12 HIGH TERRACE, NEW QUAY

Archives reference 55/22/2

## Crew names

Forename	Surname	Age/DOB	Birthplace	Capacity	Previous vessel
HENRY	EVANS	1840	NEW QUAY, CARD.	MASTER	ANTELOPE, ABERYSTWYTH
DAVID	EVANS	1874	NEW QUAY, CARD.	MATE	ANTELOPE, ABERYSTWYTH

### Appendix F Appropriation Book Entry

Image source [clip](#) CLI

Notes

Official Number.	Name of Ship.	Tonnage.	Whether Steam or Sailing Ship.	Port of Registry.	Date of Registry.	Occasion of Appropriation.
5640 1	Jane	29	Sails	Aberporth.	29 May 1868	New vessel
2	Antelope	29	"	"	30 "	"
3	Henry & Taylor	80	Steam	"	3 July "	"
4	Lea	380	Sails	"	8 Feb 1869	"
5	Cambridge	76	"	"	11 Mar "	"
6	Sarah	281	"	"	12 May "	"
7	Elizabeth Jane	73	"	"	14 June "	"
8	Alma	83	"	"	6 Sept "	"
9	S. Lewellyn	161	"	"	14 Dec "	"
5641 0	M. A. Jones	192	"	"	18 Jan 70	"
1	Zenobia	176	"	"	25 Jan 70	"
2	Sarah Davies	90	"	"	13 June "	"
3	Reclaud.	240	"	"	2 July "	"