

**Welsh Wreck Web Research Project**  
**(North Cardigan Bay)**  
**On-line research into the wreck of the:**  
***Dove***



A smack sailing into harbour

Report compiled by:

**Graeme Perks**

Report Title:

**Welsh Wreck Web Research Project  
(North Cardigan Bay)  
On-line research into the wreck of the:  
*Dove of Liverpool***

Compiled by:

**Graeme Perks**  
graperks@aol.com  
Sutton Coldfield  
UK

On behalf of:

**Nautical Archaeology Society**  
Fort Cumberland  
Fort Cumberland Road  
Portsmouth  
PO4 9LD  
Tel: +44 (0)23 9281 8419  
E-mail: [nas@nauticalarchaeologysociety.org](mailto:nas@nauticalarchaeologysociety.org)  
Web Site: [www.nauticalarchaeologysociety.org](http://www.nauticalarchaeologysociety.org)

Managed by:

**Malvern Archaeological Diving Unit**  
17 Hornyold Road  
Malvern  
Worcestershire  
WR14 1QQ  
Tel: +44 (0)1684 574774  
E-mail: [MADUdiving@gmail.com](mailto:MADUdiving@gmail.com)  
Web Site: [www.madu.org.uk](http://www.madu.org.uk)

Date:

**September 2021**

Report Ref:

***Leave blank***

## **1.0 Abstract**

The “www Research Project” is about, discovering by on line research details of ships, on the MADU data base of wrecks of North Wales, the circumstances of their loss, details of the owners and crew, the cargo carried and their history.

The Dove, 29 tons was built as a smack at Glasson dock in 1841 and was registered at and traded from Lancaster with Ireland, Scotland and Wales until sold in 1844 and then registered at Beaumaris. The Dove then started trading between Wales, Ireland and England including London. The Dove was sold again in 1849 but had been converted to a schooner. The Dove was sold again and registered at Liverpool and after being driven onto rocks at Holyhead in in 1868 was sold in Carmarthen. The Dove continued trading as before but was driven ashore in Hell’s Mouth in 1869 and sold for salvage. The Dove was later towed off and repaired at Porthinllaen before continuing sailing until the record of her sailings stopped in 1875.

## 2.0 Index

<b>2.1 Table of Contents</b>		<b>Page No.</b>
<b>1.0 Abstract</b> -----		3
<b>2.0 Index</b> -----		4
2.1 Table of Contents		4
2.3 List of Pictures		5
2.4 Contributors		5
2.5 Abbreviations		5
<b>3.0 Introduction</b> -----		6
<b>4.0 Background</b> -----		7
<b>5.0 Research Methodology</b> -----		10
<b>6.0 Results</b> -----		12
<b>7.0 Analysis</b> -----		22
<b>8.0 Conclusions &amp; Recommendations</b> -----		24
<b>9.0 References</b> -----		25
 <b>Appendices:</b>		
<b>Appendix A – Time line for Dove</b> -----		26
<b>Appendix B – Port &amp; Other Locations</b> -----		48
<b>Appendix C – Mercantile Navy List</b> -----		50
<b>Appendix D – Appropriation Book Entry</b> -----		53
<b>Appendix E - Crew lists Dove of Liverpool 1870</b> -----		54
<b>Appendix F - Probate of Hugh Humphrey Hughes</b> -----		57

**2.3 List of Pictures****Page No.**

Front Cover: A smack sailing into harbour -----	1
Fig. 1 Mathew Simpson -----	19
Fig. 2 Copper tokens from Flint Lead Works -----	20
Fig. 3 Photo of Porth Ysgaden 1866-----	56

**2.4 Contributors**

Madu

**2.5 Abbreviations**

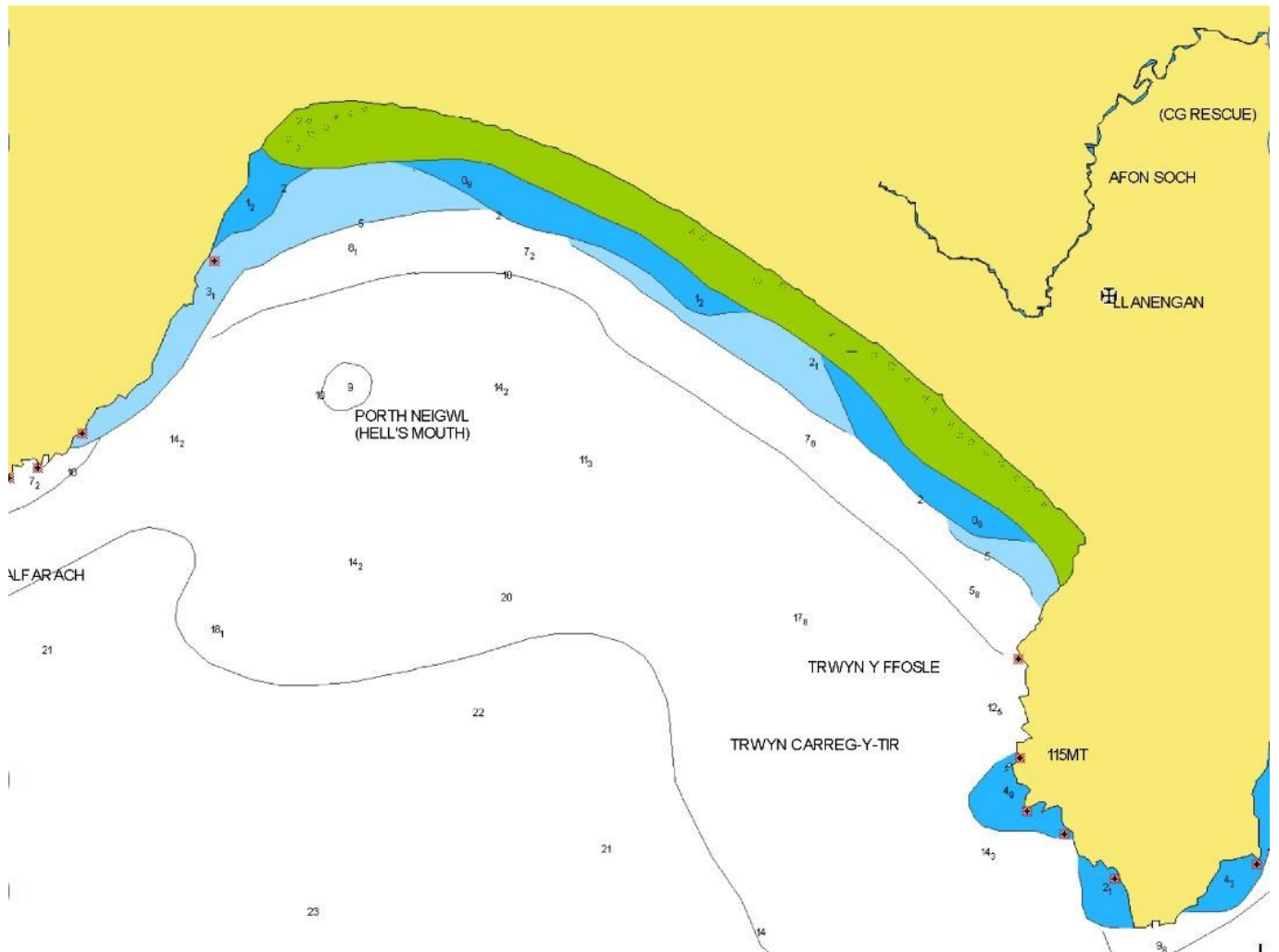
LR	Lloyds Register of shipping
BNA	British Newspaper Archives
FSM	Shipwrecked Fishermen and Mariners Benevolent Society
MADU	Malvern Archaeological Diving Unit
MNL	Mercantile Navy List
NAS	Nautical Archaeology Society
NAW	National Archives of Wales
NPRN	National Primary Resource Number
OS	Ordnance Survey
RNLI	Royal National Lifeboat Institution
WNL	Welsh Newspapers on Line
w/e	Week ending

### **3.0 Introduction**

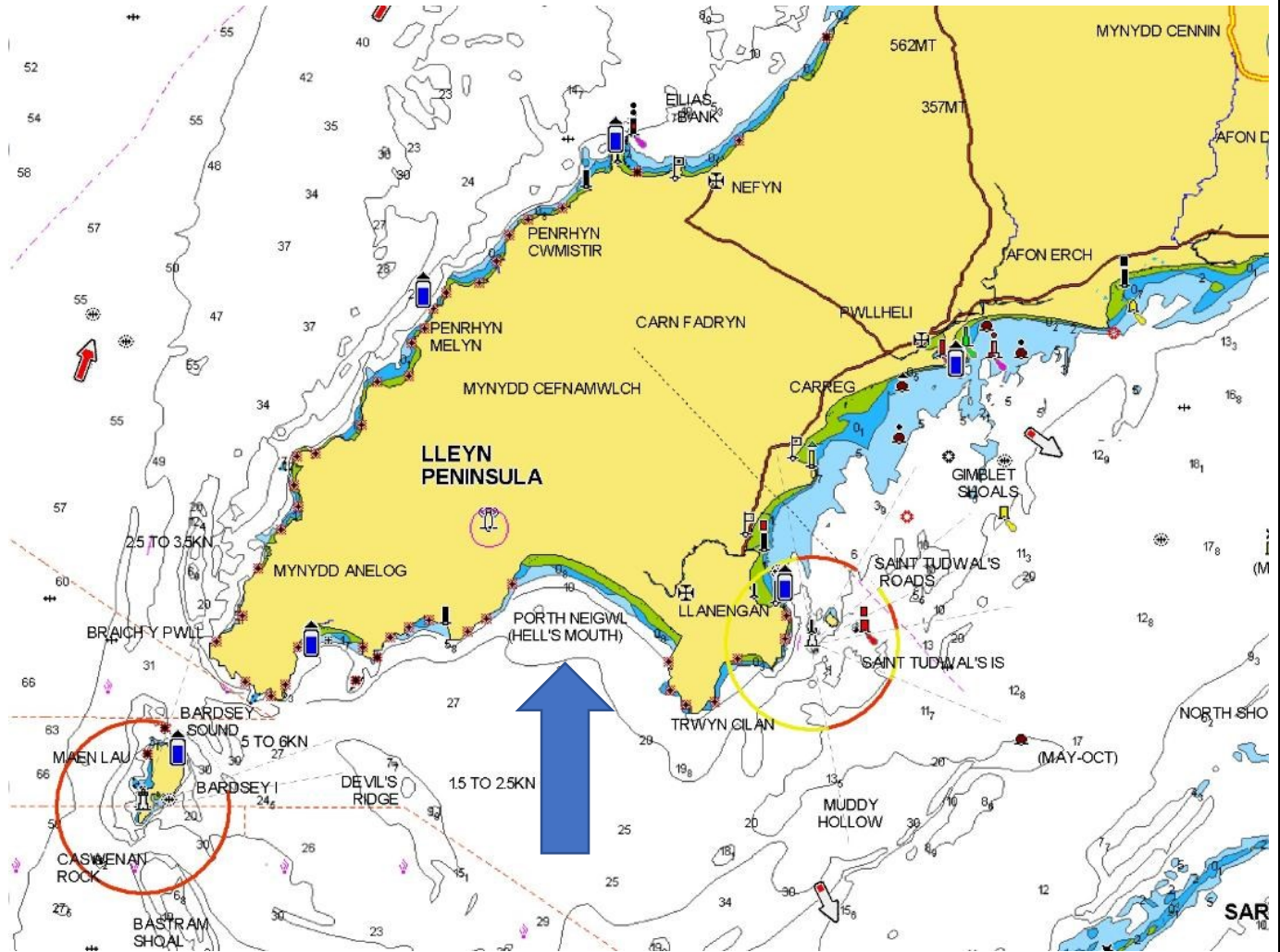
1. I selected Dove to research because very little was known about her, when she was wrecked and where , I wished to see how much information I could find about her, in addition, I also wanted to find out what happened, and to discover:
2. The dimensions of the vessel, although for this period of time apart from the draught, they would have only been recorded in on line information if the Lloyd's survey was available or the vessel had been advertised for sale in a surviving newspaper that included them, who the builder was and when she was built including any other information available about her.
3. Information concerning the voyages, cargo's, any events affecting the vessel, details of its masters, crew and owners.
4. To find out the sequency of events leading up to the loss of the vessel, whenever that was and the event in 1869.
5. To discover the cause of the event in 1869 and if the vessel survived, the cause of its eventual loss.
6. The events that happened after the incident in 1869 and up to and after its loss if it survived.
7. If there were any previous research of the vessel for the 1869 incident and its story.
8. If there was a wreck site for Dove and if it had been identified, dived and recorded.
9. If any salvage of the vessel and its cargo had been carried out
10. If any previous reports had been produced for the Dove.

## 4.0 Background

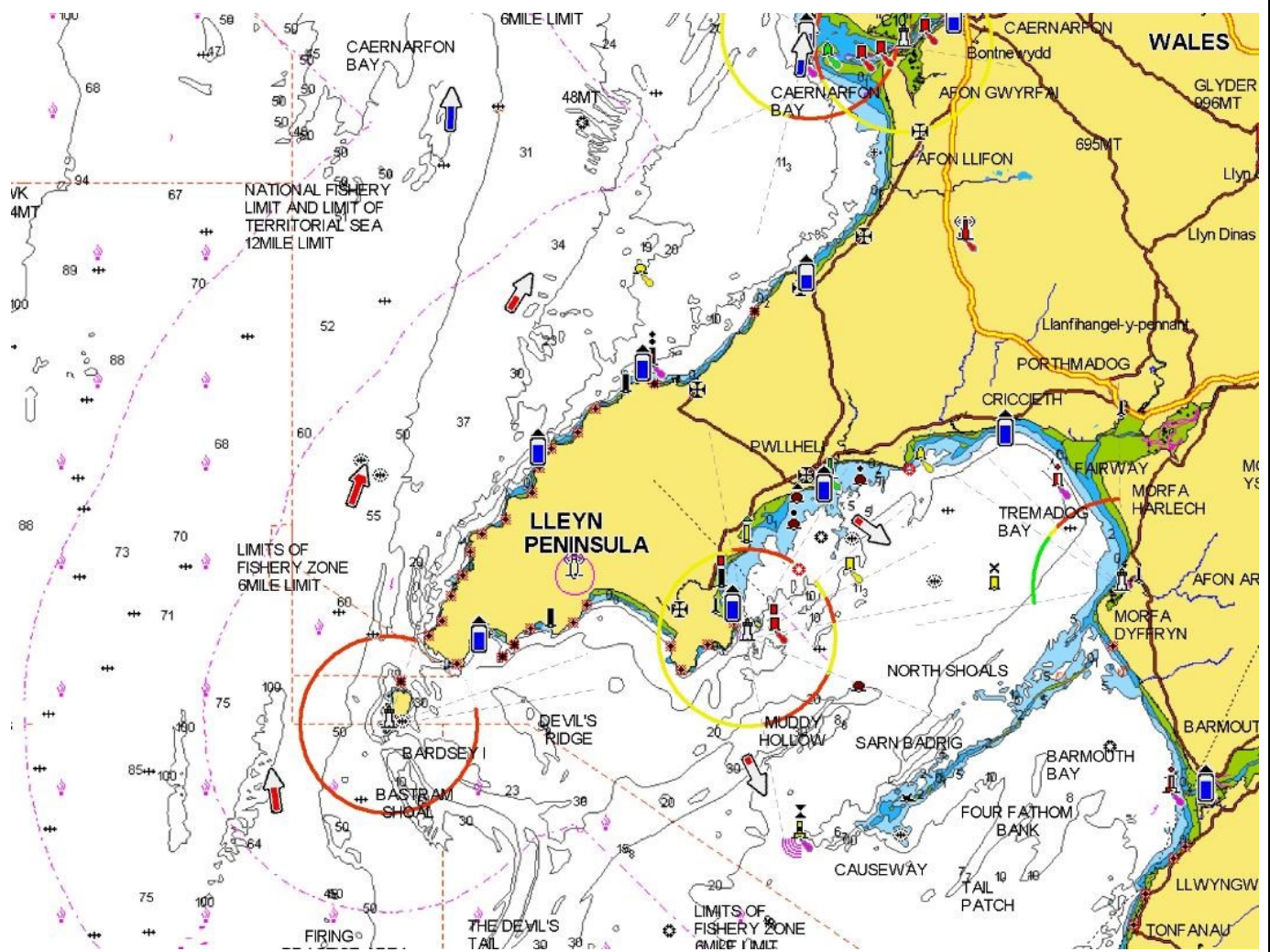
When I started this project it was reported that Dove was wrecked sometime in 1869, somewhere in North Wales and was reported to be a sloop.



Hell's Mouth



Lleyn Penninsula and Hell's Mouth



Lleyrn Peninsula and area

## 5.0 Research Methodology

I used a Microsoft Pixel laptop with access to my home internet running windows 10 operating system. I also used my Apple I pad for research when I was away from the laptop. The new internet provider has now connected my home by a fibre connection so it is very much faster. The Lap top uses bling search engine but I also use Goggle which produces less advertisements and less Americanised content.

I searched Lloyds Register of Shipping ( LR ) for "Dove" looking for details of her dimensions, master, builders and owners from 1841 including the supplement with no match. I then searched yearly until 1843 with no matches. I later searched 1844 and 1845 when I found she had been offered for sale in 1844 with no match

I searched LR ships, plans and survey reports for "Dove" with no match.

I searched The British Newspaper Archives (BNA) for "Dove" looking for sailings, arrivals, a launch, owners, builders, mishaps and any details of her loss and found a number of matches.

I searched "Dove of Beaumaris" since the vessel was registered there for a time and found a schooner of that name master Hughes, but she was wrecked at the entrance to Galway Bay in September 1852, the crew were saved. I checked Irish shipwrecks site to if she had been salvaged and for more details about her, but this could not be the same vessel as she was a brigantine built in 1843 in Nova Scotia of 78 tons.

I searched "Dove of Lancaster" since she was built there and found a match, an advertisement of a smack Dove of Lancaster for sale with the correct details for build place, date and tonnage in 1844.

I then searched "Dove of Lancaster" in the 1840's and found matches in 1841 & 1842 of sailings from Lancaster giving the masters names. I then searched "Dove Crieghton" and "Dove Young" finding matches. I searched "Dove Jones" from 1844 with matches. I also searched "Dove Doughton", "Dove Edwards", "Dove Jones", "Dove Davies", "Dove Evans", "Dove Rowlands", "Dove Williams", "Dove Lloyd", "Dove Jones" and "Dove Hughes" with matches. I also searched "Evans Wavertree", "Owens Penrhosllyny", "Griffiths Castell March" and "Hughes Portinllaen" with no matches

I searched Welsh newspapers on line for "Dove" , "Dove Jones", "Dove Doughton" , "Dove Edwards", "Dove Jones", "Dove Davies", "Dove Evans", "Dove Rowlands", "Dove Williams", "Dove Lloyd", "Dove Jones" and "Dove Hughes",

looking for sailings, arrivals, a launch, owners, builders and any details of her loss and found a match. I also searched " Evans Wavertree", "Owens Penrhosllyyny", and "Hughes Portinllaen" with no matches. I also searched "Griffiths Castell March" with a match.

I searched Coflein site for "Dove" looking for any details of the wreck and a chart with no match.

I searched wreckeu site for "Dove" looking for any details of the wreck with a match but no new information.

I purchased a subscription for Ancestry to look at the crew list for 1870 available on line and found a copy of the two crew lists for that year.

I searched the 1861 Census via Ancestry for the master Jones on the Dove and found a Dove in Runcorn registered in Aberystwith matching the details but it was 25 tons and another vessel. I also searched Hugh Humphrey Hughes of Portinllaen in census records with no match, but found a probate record. I searched Ancestry Master & mates certificates UK & Ireland for "Hugh Hughes" and "John Herbert" with no matches.

I searched google for "Dove of Lancaster", "Dove of Beaumaris", and "Dove of Liverpool" with no matches.

I also searched " Evans Wavertree", "Owens Penrhosllyyny", and "Hughes Portinllaen" with no matches

## 6.0 Results

Vessel	Name/s	Dove	
	Type	Smack converted to a Schooner	
Built	Date	1841	
	Builder	Unknown but may be Glasson Dock Shipbuilders Glasson Dock, Lancaster	
Construction	Materials	Wood,	
	Decks	One	
	Bulkheads	None	
Propulsion	Type	Sail	
	Details	Fore and Aft rigged	
Engine	Details	N/A	
	Boilers		
Drive	Type		
	Number		
Dimensions	Length	48ft	0 ins
	Beam	13ft	3 ins
	Draught	6 ft	6 ins
Tonnage	Gross	32 88-100ths	
	Net	29	
Owner	First	Unknown Lancaster	
	Last	Henry Griffiths Castell March, Llangian, Carnarvonshire	
	Others	B P Evans Jun., Wavertree, Liverpool, John Owens, Penrhosllyny, Anglesea, Hugh Humphrey Hughes, Portinllaen, Carnarvonshire.	
Registry	Port	Lancaster, Beaumaris, Liverpool	
	Flag	British	
	Number	10651	
History	Routes	Wales to Isle of Man, Ireland, Scotland & England	
	Cargo	Slates, Flour, Wheat, Beans, Oats, Charcoal, Iron fittings, Lead ore, Copper ore, Bricks, Iron ore, Limestone, Grain	
Final Voyage	From	Milford 10 <sup>th</sup> December 1869	
	To	Ulverston	
	Captain	Lloyd	
	Crew	Unknown	
	Passengers	None	
	Cargo	18 tons Charcoal	
Wrecking	Date	11 <sup>th</sup> December 1869	
	Location	Porth Migwl (or Hell's Mouth),	
	Cause	Mistaking lead mine light for Bardesy Light house	
	Loss of life	None	
	Outcome	Total Loss, salvaged & repaired	

**Wexford Independent - Wednesday 30 June 1841**

EXPORTS, Dove, Lancaster, 730 brls of oats, brls of beans.

**Lancaster Gazette - Saturday 01 January 1842**

LANCASTER SHIPPING LIST.

Entered December 31. — Dove, Creighton, from Ramsay, Isle of Man, with 150 loads of potatoes and 1600 bushels of wheat, for John Whiteside.

**Lancaster Gazette – Saturday 25 March 1843**

LANCASTER SHIPPING LIST

Entered March 10 — The Dove, of Lancaster, Young, with 1,649 bushels of wheat, for E. Baynes.

**Shipping and Mercantile Gazette - Monday 05 February 1844**

BEAUMARIS —Feb. 2:Wind N.W., blowing hard. Put in, windbound- Dove, Jones; Juno. Evans ; and Providence. Richards ; from Liverpool for Amlwch.

**Gore's Liverpool General Advertiser - Thursday 29 February 1844**

ON SALE,

The fine little Smack DOVE, of Lancaster; Lying in King's Dock. Burthen per register 32 tons new measurement, 46 tons old measurement, and carries 62 tons on 7½ feet draft of water; was built at Glasson Dock, near Lancaster, in 1841, of the best materials, and is in good order well found in every respect.—

For further particulars

Apply STRONG and REID, No. 4. Chapel-walks.

**Shipping and Mercantile Gazette - Friday 06 September 1844**

HOLYHEAD—Sept. 4: Wind, last night and this day E. by S., strong gale and squally. Put in— Dove, Jones, from Aberystwith for Flint

### **Liverpool Standard and General Commercial Advertiser - Tuesday 13 November 1849**

Tomorrow, (Wednesday) the 14<sup>th</sup> Instant, at One o'clock, at the brokers sale room, Derby Buildings, Fenwick Street

The Schooner DOVE ;

32 88-100th tons per register; built at Glasson Dock, Lancaster, in 1841, of the best materials. Length, 48 feet; breadth, 13 feet 3-10ths ; depth, 6 feet 6-10ths.- She is now in good order, and may be sent to sea immediately: lying in St Georges Dock basin. – Apply to

TONGUE, CURRY & Co., Brokers

### **North Wales Chronicle - Saturday 04 January 1851**

PORTMADOC, Jan. 2nd.-Weather: thick, rainy - Wind bound, , Druid, Evans; Eliza, Jones; Dove, Jones; Economy, Roberts Abeona, Griffiths; Illyria, Evans; Topaz, Roberts Margaret, 1onces; Edward, Jones; Mary Elizabeth, Morris; Endeavour, Jones.

For the last five days we have experienced thick, rainy weather. last night it blew a heavy gale at S. W. with torrents of rain which have caused high floods from the mountains.

### **Shipping and Mercantile Gazette - Friday 10 January 1851**

ABERYSTWITH—Jan. 7 The weather continues very unsettled, wind from S.E. to W., accompanied with rain and very hazy, the sea in the bay running very high every day; bar. variable. „ , Put in, windbound—The schooner Druid, Newell; and smack Dove, Jones, from Portmadoc; both for the Bristol Channel.

### **Shipping and Mercantile Gazette - Wednesday 30 July 1851**

FOWEY— July 29 : 27, a.m. and Noon—S.W., strong, with heavy rain; p.m.—Moderate, showery. 28—S.W., strong; a.m. after Noon—Incessant rain ; p.m. —Moderate, thick, and hazy. 29, a.m.— S.W., fresh, showery. Put in—. Dove, Jones, for Aberystwith ; and Mary Dare, Clayton, for Aberavon ; both from London.

### **Shipping and Mercantile Gazette - Monday 10 January 1853**

ABERYSTWITH—Jan, 8 : W. strong, showery, with hail, and very unsettled ; bar. 28 70, very variable; ther. 48. Vessels lying here loaded in the harbour, waiting for fair weather, viz. The Waterloo, Lewis. Castle, Jenkins. Dove, Jones.

### **Shipping and Mercantile Gazette - Saturday 27 February 1869**

PORTINLLAEN-Feb 26: NW, strong.

The Dove schooner, from Saundersfoot for this place, is on the beach discharging culm ; and the wind being right in, she cannot come out until it has moderated.

### **Gloucestershire Chronicle - Saturday 10 April 1869**

PORT OF GLOUCESTER. arrivals for the Week ending April 9.

From Aberslyfi —The Dove, Lloyd, with 48 tons slate slabs, for Belcher and Gee.

### **Gloucestershire Chronicle - Saturday 17 April 1869**

PORT of GLOUCESTER. Exports for the Week ending April 16

For Carmarthen. the Dove, Lloyd, with 36 tons flour, from Reynolds and Allen

### **Lloyd's List - Thursday 23 April 1868**

HOLYHEAD, 21st Apl. The DOVE (schnr.), Jones, of and loading for Liverpool, with iron, parted her moorings in Crogyl Pool, Rhosneigr, this morning and drifted on the rocks ; she will become a total wreck unless the weather moderates the cargo has been discharged ; crew saved.

**Caernarvon & Denbigh Herald - Saturday 13 June 1868**

Euston Station, June, 1868.

2619

**SALES BY MESSRS. E. H. OWEN & SON.  
TO MASTER MARINERS AND OTHERS.**

**TO BE SOLD, PRIVATELY,  
BY MESSRS. E. HUGH OWEN AND SON,**

**THE SCHOONER DOVE, of Liverpool**  
with the whole of her out-fit appurtenances, as she now  
lies at the Wharf, near Mr. Barlow's Yard, Carnarvon.

Apply to Messrs. E. HUGH and SON, Auctioneers, Car-  
narvon. 2679

**GROWING CROPS OF HAY.**

**TO BE SOLD, PRIVATELY,  
SEVERAL lots of GROWING HAY and**

**Preston Herald - Saturday 14 August 1869**

Serious Accident on the Quay at Fleetwood —About four o'clock on Saturday afternoon, accident of singular nature occurred on the Quay. A party of excursionists were watching the steam crane engaged in discharging the schooner Dove, near the Salt Warehouse, when one of them, an old man, from Blackburn, whose name we have been unable to ascertain, incautiously stepped in the way of the crane beam, and was struck by it across the back, and was thus compelled to jump to the deck of the vessel; in doing so fell forward, cutting his forehead and face very badly, and was picked up in state of Insensibility. He was taken back to Blackpool that night. No blame can attached to the man in charge of the crane, who, notwithstanding being nearly covered by tarpauling, has quite sufficient to do in attending to the working of the crane. His position, too, the rear of the crane, would prevent his seeing the man's dangerous position.

**Western Daily Press - Friday 15 October 1869**

IMPORTS COASTWISE. Tuesday, October 12.

Dove, Bangor —Jones and Nash, 50 tons slates

**North Wales Chronicle and Advertiser for the Principality December 18 1869**

The Dove, of Liverpool, Lloyd master, when on a voyage from Milford to Ulverstone with a cargo of charcoal got on shore at Porthneigwl, or Hellsmouth, at 4 p.m., last Saturday. Crew saved.

**Shipping and Mercantile Gazette - Monday 13 December 1869**

PWLLHEU—Dec. 12: SW, fresh. The Dove schooner, of Liverpool, Lloyd, from Milford for Ulverstone, with a cargo of charcoal, came on shore at Hellsmouth yesterday morning at 4 a.m. ; crew saved.

**Shipping and Mercantile Gazette - Wednesday 22 December 1869**

Report of Edward Hughes, Mate and Sailing Master of the Schooner Dove, of Liverpool, 29 tons, from Milford for Ulverston (charcoal, about 18 tons) (before noticed); —Left Milford Dec. 10; and on the 11th, at 1 A.M., weather thick, wind W.S.W., a strong gale, ship being on port tack with sails set. At 1 30 A.M. carried away mainsheet. We then lowered the mainsail down and stowed it away. At 2.0 a.m. came on to blow a whole gale, with heavy rain and very thick. At 3 A-M. we saw a light, which we supposed to be Bardsey Light, our reckoning distant about four miles, on starboard bow. We kept the same course, being N.E. by N. About 3 10 a.m. saw land about one mile distant on starboard bow. We then hauled her up with her head to N.W., and then saw land again right ahead. We then wore the vessel to try get her clear of the rocks, then let the anchor with about 20 fathoms chain, which did not hold her, and she drove broadside on the beach Porth Migwl (or Hell's Mouth), the sea making a clean breach over her. At 4 A.M. all got into the rigging, where we remained until the tide receded. The light which we saw proved to a light at Tonrallt Lead Mines, Llanengan, near Porth Migwl.

### **Gloucester Journal - Saturday 19 August 1871**

PORT OF GLOUCESTER.

- Imports for the Week ending August 18, 1871.

From Port Madoc—the Endeavour, Williams, 36,000 slates for Barkworth and Spaldin ; the Dove, Evans, 34,500 ditto for Barkworth and Spaldin

### **Gloucester Journal - Saturday 18 May 1872**

GLOUCESTER. Imports for the Week ending May 17.

From Port Madoc—the John, Jones, 73 tons slates for Sanders and Booth ; the Priscilla, Gainey, ditto for Barkworth and Spaldin ; the Dove, Evans, ditto for Price and Co.

### **Shipping and Mercantile Gazette - Tuesday 18 June 1872**

ST. TUDWAL ROADS—June 17: Variable, light, cloudy, sultry. Put in, 15th, p.m.—Dove, Evans, from Milford; for Abersoch. The last two vessels are waiting for rise of water to go into Abersoch to discharge.

### **Shipping and Mercantile Gazette - Friday 01 November 1872**

ST. TUDWAL ROADS-Oct 31: moderate; bar. 20 80, mercury rising.

The schooner Dove, Evans, and the smack Pilot Queen, Jones, are both laid up at Abersoch for the winter.

### **Shipping and Mercantile Gazette - Friday 05 September 1873**

ST. TUDWAL ROADS—Sept. N, fresh, showery. The Dove, Evans, has been beached at Penryndy to discharge coals.

### **Shipping and Mercantile Gazette - Monday 05 July 1875**

LLANEALHAIARN July 3<sup>rd</sup> - Put in through stress weather, 4th—The Dove, Jones, for Caernarvon.

## Glasson Dock Shipbuilders

In 1836 established by James Penny Nicholson with Daniel Simpson, a shipwright from Liverpool. A Graving dock opened in December 1840. James and Daniel resigned in 1852 and his brother Matthew Nicholson took over. The shipbuilding yard producing some 50 vessels and a graving dock for the repair of vessels, this remained until 1968. In 1907 Shipbuilding ended when the yard was Nicholson and Sons

In the 1841 Census, the occupants of Dalton terrace, Glasson Dock can be seen to come from a range of occupations: a grocer; a labourer (albeit a Lamb, one of Glasson's older families); two officers of customs; and the 29-year-old Matthew Simpson, shipbuilder. In 1851, the promoter of the shipyard himself, James Nicholson, lived in Thurnham Terrace/Dalton Terrace

In 1867 the cottages in Dalton Terrace, except one in the ownership of Mrs Cliffe, were all let at an annual rent of £8, but the 'double house' at the top of the row was let for £ 18 per annum to Matthew Simpson, at that time the proprietor of the shipyard.



Fig. 2

Mathew Simpson died 27 Sep 1900 aged 80 years

## Flint Lead Works

The company was founded by George Roskell and was the only issuer of copper tokens in North Wales in the 19th century. The company produced lead from ore obtained from mines on the nearby Halkyn mountain. These lead smelting works by which firm, or their successors (Roskell, Williamson and Co.), the tokens are issued. In 1852 the Flint Lead Works became absorbed in the more extensive Alkali Works of Muspratt Bros. and Huntley, which by 1885 was one of the largest, if not the largest, chemical works in Britain



Fig. 2 Copper tokens from Flint Lead Works

Between 1807 and 1821, no regal copper coins were struck resulting in a shortage of small change. This caused major problems, particularly in the growing industrial cities of the Midlands and north of England. For a period of 4 years, between 1811 and 1815, numerous factories, tradespeople and even workhouses issued tokens. The images depicted are generally of an industrial nature, showing factories and machinery, thus giving us a visual picture of the growing expansion of the machine age.

## **Mr. Henry Griffith**

### **The Cambrian News and Merionethshire Standard 23rd July 1886**

Recovery of Tenement. Mr. Henry Griffith, Castell march, summoned Griffith Griffiths, The Wellings, Llangran, for having refused to deliver up the possession of The Wellings. Proof of service of the usual notices having been given, a warrant was ordered to issue in twenty-two days.

## **Cargos**

Jet black is a type of lignite, the lowest rank of coal, and is a gemstone. Unlike many gemstones, jet is not a mineral, but is rather a mineraloid. It is derived from wood that has changed under extreme pressure.

## 7.0 Analysis

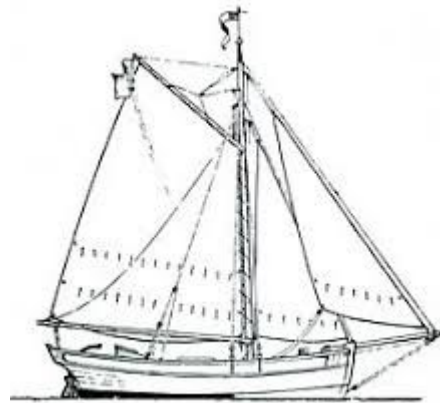
The Dove did not appear in LR at 29 tons it apparently was not considered necessary by her owners.

The Dove was built at Glasson Dock, Lancaster and there only appears to have been one ship builder there the Glasson Dock Shipbuilders.

A smack is a sailing vessel with one mast and a schooner has two masts with the aft or rearmost mast the same height or taller.



A two masted schooner



A smack

The actual sail layout varied between ports and over time, with topsail schooners having extra sails above the mainsail.

The Dove probably looked very much like the above drawing of the smack when it was built, with the addition of a second mast made later after 1844. The convention at the time was to call a two masted schooner, a schooner with an additional masts described with the vessel as a three masted schooner up to the largest built, a seven masted schooner.

The Dove was offered for sale in February 1844 as a smack in Lancaster.

The Dove was again advertised for sale by auction in November 1849 in Liverpool Standard and General Commercial Advertiser when she was described as a schooner. The vessel does not appear to have been lengthened or otherwise changed as the tonnage is unaltered.

In June 1868 the offer for sale implies the Dove is damaged from the April 1868 event when she was on the rocks at Holyhead after her chain parted and was lying in Carnarvon.

Flint Lead works was probably the customer for the lead ore carried from Aberystwyth to Flint by the Dove. The silver - lead mines outside Aberystwyth were never very profitable and were plagued by flooding and ceased operation in the 1880's due to the low price for ore due to foreign imports.

Porth Neigwl (Hell's Mouth) comprises a three and a half mile wide south-west facing sandy bay, with rocky cliffs to the east and west. It was appropriately named, and feared by generations of seamen. Any sailing ship unfortunate enough to be swept into the bay during a south-westerly gale would have had great difficulty in escaping, and would be faced with the choice of running into the cliffs or on to the beach. Most ships opted for the beach and some never left and would have been pounded to pieces on the beach and scavenged.

The crew list (Appendix E ) for 1<sup>st</sup> January to 30<sup>th</sup> June 1870 describes the vessel being sold but "nearly a wreck" then floated off the shore at Hell's Mouth 23<sup>rd</sup> June 1870 and brought to Portinllaen but not having crew employed. The same list also shows the Dove being registered at Liverpool number 378 of 1855, while the MNL shows her being registered at Beaumaris until 1865. It appears Hugh Hughes, Master and John Herbert the mate of Dove in 1870 did not hold Master or mates certificates.

Fig.1 shows how vessels of the size of Dove reached isolated villages, anchoring and drying out at low tide to unload the cargo. There are a number of recorded instances of Dove unloading this way.

The Dove was laid up by the new owner Hugh Humphrey Hughes from November in 1870 and this appears to be continued until the records cease.

The crew lists for Dove cease in 1875 and although the record in MNL continues until 1882 there are no records on line of her sailing after 1875 or her fate. There is a report of another Dove being condemned by the Board of Trade in 1875 and seized when the owners attempted to send her to sea. There is no evidence the Dove was condemned but the Board of Trade were active following the Commission looking at unseaworthy ships and Clause 11 of the Merchant Shipping Act of 1871 (whereby sending unseaworthy vessels to sea is made a misdemeanour) was operative.

The majority of the reports concerning the Dove were found in BNA with the remainder in WNL. The crew lists were from the Liverpool Archive available on line via Ancestry.

## 8.0 Conclusions & Recommendations

I have spent about 20 hours on this project with 95% spent on line. This was a project that starting from the loss of the Dove proved difficult. It was only after I tried searching in relation to Lancaster where Dove was built in Glasson Dock I started to discover more about her. The crewlist project provided details that she had survived being ashore in Hell's mouth but until I downloaded the crew list for 1870 I had no details. Dove is a difficult name to research because of the volume of possible matches produced and needed other details often missing to narrow the search.

The final fate of the Dove is unknown, so there is no wreck site to preserve or dive.

I purchased a subscription to Ancestry to obtain the crew list for 1870 on line and it provided the probate record for Hugh Humphrey Hughes who bought her a salvage on Hell's mouth beach. I lacked sufficient details to trace any other persons involved with the Dove.

The research has answered some of my original questions but not details about the owners or crews, except 1870 or the final disposal of the Dove. The necessary information is not available on line.

The crew lists held by the Maritime History Archive and the National Maritime Museum would assist in completing this project but are not available on line.

The story of the Dove is incomplete and not worthy of any further publication until further research can be made.

## 9.0 References

<https://www.crewlist.org.uk/>

<https://www.findagrave.com/>

<https://www.geographicguide.com/>

<https://www.britishnewspaperarchive.co.uk/>

<https://www.google.com/>

<https://www.gracesguide.co.uk/>

<https://hec.lrfoundation.org.uk/>

<https://historypoints.org/>

<http://www.irishshipwrecks.com/>

<https://www.navionics.com/>

<https://newspapers.library.wales/>

<https://redrosecollections.lancashire.gov.uk/>

<https://www.rhiw.com/>

<https://westernmininghistory.com/>

<https://en.wikipedia.org/>

## Appendices:

### Appendix A – The Timeline for the *Dove*

#### 1841

June 19 1841 Lancaster sailed Dove, Creighton for Port William – general cargo  
w/e June 30 1841 Wexford sailed Dove for Lancaster – oats and beans  
November 6 1841 Whitehaven arrived Dove, Creighton from Ramsey  
November 10 1841 Whitehaven sailed Dove, Creighton for Carrickfergus  
December 17 1841 Whitehaven arrived Dove, Creighton from Ramsey IM –wheat  
December 26 1841 Lancaster sailed Dove, Creighton for Whitehaven  
December 31 1841 Lancaster arrived Dove, Creighton from Ramsey IM- potatoes

#### 1842

February 22 1842 Whitehaven arrived Dove, Creighton rfrm Whithorn  
February 24 1842 Whitehaven sailed Dove, Creighton for Whithorn  
March 5 1842 Whitehaven arrived Dove, Creighton form Whithorn  
March 24 1842 Whitehaven arrived Dove, Creighton form Whithorn  
April 3 1842 Whitehaven sailed Dove, Creighton for Whithorn  
May 4 1842 Whitehaven arrived Dove, Creighton form Whithorn  
May 10 1842 Whitehaven sailed Dove, Creighton for Whithorn

#### 1843

January 5 1843 Swansea arrived Dove, Jones from Wicklow – ballast  
January 23 1843 Amlwch, Anglesea arrived Dove, Jones from Liverpool  
April 12 1843 Aberystwith sailed Dove, Jones for Llanelly  
April 26 1843 Aberystwith arrived Dove, Jones from Chester  
May 24 1843 Aberystwith arrived Dove, Jones from Pembrey

June 2 1843 Anglesea arrived Dove, Jones from Liverpool  
 June 14 1843 Aberystwith arrived Dove, Jones from Pembrey – coal  
 June 21 1843 Llanelly arrived Dove, Jones from Aberystwith – ballast  
 June 29 1843 Llanelly sailed Dove, Jones for Aberystwith – coal  
 July 3 1843 Amlwch, Anglesea sailed Dove, Jones for Liverpool  
 July 8 1843 Amlwch, Anglesea arrived Dove, Jones from Liverpool  
 July 12 1843 Aberystwith sailed Dove, Jones for Llanelly  
 July 19 1843 Aberystwith arrived Dove, Jones from Llanelly – coals  
 July 26 1843 Aberystwith sailed Dove, Jones for Pembrey  
 August 8 1843 Amlwch, Anglesea arrived Dove, Jones from Liverpool  
 August 11 1843 Aberystwith sailed Dove, Jones for Flint  
 September 6 1843 Llanelly arrived Dove, Jones from Liverpool  
 September 12 1843 Aberystwith arrived Dove, Jones from Llanelly  
 September 14 1843 Llanelly arrived Dove, Jones from Liverpool – copper ore  
 September 22 1843 Amlwch, Anglesea sailed Dove, Jones for Liverpool  
 October 7 1843 Aberystwith arrived Dove, Jones from Hayle  
 October 20 1843 Portmadoc arrived Dove, Jones from Hayle  
 October 31 1843 Portmadoc arrived Dove, Jones from Cardiff  
 November 4 1843 Solva put in Dove, Jones from Portmadoc for Cardiff  
 November 9 & 10 1843 Cardiff arrived Dove, Jones from Port Madoc  
 November 18 1843 Glamorganshire canal arrived Dove, Jones from Aberystwith -  
 . - slates  
 November 23 1843 Cardiff sailed Dove, Jones for Aberystwith  
 December 13 1843 Aberystwith sailed Dove, Jones for Flint  
 December 20 1843 Aberystwith sailed Dove, Jones – Lead ore

## 1844

January 9 1844 Holyhead put in Dove, Jones from Flint for Aberdovey  
 February 2 1844 Beaumaris put in windbound Dove, Jones from Liverpool for  
 . Amlwch

February 5 1844 Amlwch, Anglesey arrived Dove, Jones from Liverpool  
February 13 1844 Amlwch, Anglesey sailed Dove, Jones for Liverpool  
February 22 1844 Amlwch, Anglesey arrived Dove, Jones from Liverpool  
March 8 1844 Amlwch, Anglesey arrived Dove, Jones from Liverpool  
March 24 1844 Amlwch, Anglesey arrived Dove, Jones from Liverpool  
April 17 1844 Amlwch, Anglesey arrived Dove, Jones from Liverpool  
April 24 1844 Aberystwith sailed Dove, Jones for Neath  
May 1 1844 Aberystwith sailed Dove, Jones – ballast  
May 2 1844 Neath cleared out Dove, Jones for Aberystwith  
May 3 1844 Aberystwith arrived Dove, Jones from Neath  
May 14 1844 Aberystwith arrived Dove, Jones from Ayr  
May 23 1844 Aberystwith arrived Dove, Jones from Milford  
May 24 1844 Aberystwith sailed Dove, Jones – ballast  
May 29 1844 Aberystwith arrived Dove, Jones  
June 17 1844 Aberystwith sailed Dove, Jones for Swansea  
August 1 1844 Swansea arrived Dove, Jones from Chester - bricks  
August 5 1844 Swansea sailed Dove, Jones for Newport  
August 7 1844 Newport, Mon. arrived Dove, Jones from Swansea  
August 11 1844 Newport, Mon. sailed Dove, Jones for Aberystwith  
August 21 1844 Aberystwith arrived Dove, Jones from Newport - coals  
September 4 1844 Holyhead put in Dove, Jones from Aberystwith for Flint  
September 6 1844 Penryn arrived Dove, Jones from Amlwch  
September 11 1844 Aberystwith arrived Dove, Jones from Neath – coals  
September 13 1844 Aberystwith sailed Dove, Jones for Flint – Lead ore  
w/e September 16 1844 Llanelly arrived Dove, Jones from Liverpool – Copper ore  
September 25 & 26 1844 Bristol arrived Dove, Jones from Chester  
October 11 1844 Swansea sailed Dove, Jones for Hayle  
October 24 1844 Hayle arrived Dove, Jones from Swansea  
October 29 1844 Hayle arrived Dove, Jones from Swansea

November 9 1844 Aberystwith arrived Dove, Jones from Hayle

November 15 1844 Aberystwith arrived Dove, Jones from Hayle – iron castings

December 4 1844 Aberystwith sailed Dove, Jones for Flint – Lead ore

December 9 1844 Pwllheli arrived Dove, Jones from Flint

December 12 1844 Pwllheli arrived Dove, Jones

December 26 1844 Port Madoc arrived Dove, Jones

December 27 1844 Port Madoc sailed Dove, Jones for Newport

December 29 1844 Pwllheli sailed Dove, Jones

## **1845**

January 4 1845 Newport, Mon. arrived Dove, Jones from Portmadoc - slates

January 8 1845 Newport, Mon. sailed Dove, Jones for Aberystwith

January 15 1845 Aberystwith arrived Dove, Jones from Newport – coal

w/e January 18 1845 Swansea sailed Dove, Jones for Port Talbot

February 4 1845 Aberystwith sailed Dove, Jones for Flint – lead ore

February 12 1845 Aberystwith sailed Dove, Jones for Flint – lead ore

March 12 1845 Holyhead remains Dove, Jones

April 4 1845 Aberystwith arrived Dove, Jones from Chester

April 30 1845 Aberystwith sailed Dove, Jones for Flint – lead ore

May 14 1845 Aberystwith arrived Dove, Jones from Redwharf - limestone

May 16 1845 Aberystwith arrived Dove, Jones from Carnarvon

May 23 1845 Aberystwith sailed Dove, Jones for Flint

May 28 1845 Aberystwith sailed Dove, Jones for Flint – lead ore

June 7 1845 Beaumaris passed Dove, Jones for Bangor

June 12 1845 Aberystwith arrived Dove, Jones from Redwharf

June 12 1845 Caernarvon sailed Dove, Jones for Aberdovey

June 15 1845 Caernarvon arrived Dove, Jones

June 20 1845 Aberystwith sailed Dove, Jones for Flint

June 25 1845 Aberystwith sailed Dove, Jones for Flint – lead ore

July 7 1845 Aberystwith arrived Dove, Jones from Redwharf  
w/e July 16 Aberystwith arrived Dove, Jones from Redwharf - limestone  
July 17 1845 Porthcawl arrived Dove, Jones from Cork – ballast  
August 20 1845 Aberystwith sailed Dove, Jones for Neath – black jet  
August 27 1845 Aberystwith sailed Dove, Jones for Neath  
September 3 1845 Neath sailed Dove, Jones for Beaumaris  
September 10 1845 Aberystwith sailed Dove, Jones  
September 18 1845 Bristol arrived Dove, Jones from Youghal  
October 15 1845 Aberystwith arrived Dove, Jones  
October 29 1845 Aberystwith sailed Dove, Doughton for Chester

**1846**

May 17 1846 Mumbles put in Dove, Doughton from Neath for Aberystwith  
July 8 1846 Neath outwards Dove, Doughton for Aberystwith  
September 11 1846 Aberystwith arrived Dove, Doughton from Redwharf  
September 23 1846 Aberystwith arrived Dove, Doughton from Redwharf  
September 25 1846 Aberystwith sailed Dove, Doughton – ballast  
October 14 1846 Tenby arrived Dove, Doughton from Llanelly for Aberystwith  
October 19 1846 Aberystwith arrived Dove, Doughton from Llanelly

**1847**

March 21 1847 Caernarvon arrived Dove, Doughton  
March 25 1847 Caernarvon sailed Dove, Doughton for Llanelly  
w/e March 31 1847 Llanelly arrived Dove, Doughton from Caernarvon  
May 9 1847 Caernarvon arrived Dove, Doughton  
May 18 1847 Caernarvon sailed Dove, Doughton for Cardiff  
May 23 1847 Caernarvon sailed Dove, Doughton  
June 16 1847 Aberystwith sailed Dove, Doughton for Liverpool

June 22 1847 Liverpool sailed Dove, Downton for Bangor

July 19 1847 Aberystwith arrived Dove, Doughton from Neath

August 4 1847 Aberystwith sailed Dove, Doughton for Flint

August 11 1847 Aberystwith sailed Dove, Doughton for Flint

September 6 1847 Caernarvon arrived Dove, Doughton from Redwharf

September 6 1847 Caernarvon remains Dove, Doughton for Aberdovey

w/e September 6 1847 Caernarvon sailed Dove, Doughton for Swansea

w/e October 26 1847 Port of Chester arrived Dove, Doughton from Neath – coals

November 5 1847 Portinllaen put in Dove of Aberystwith from Chester for

Swansea

December 8 1847 Cardiff sailed Dove, Doughton for Dublin

## **1848**

January 10 1848 Aberystwith arrived Dove, Doughton from Dublin - limestone

March 20 1848 Holyhead put in Dove, Doughton from Flint for Aberystwith

March 24 1848 Holyhead sailed Dove, Doughton for Aberystwith

March 29 1848 Aberystwith arrived Dove, Doughton from Flint - coal

April 29 1848 Caernarvon sailed Dove, Doughton for Aberdovey

June 14 1848 Aberystwith arrived Dove, Doughton from Milford

July 1 1848 Bristol arrived Dove, Doughton from Aberystwith

July 6 1848 Newport, Mon. cleared Dove, Doughton for Dublin

July 19 1848 Dublin arrived Dove, Doughton from Newport

July 27 1848 Dublin sailed Dove, Doughton for Newport

August 12 1848 Aberystwith sailed Dove, Doughton for Cardiff

September 1 1848 Aberystwith arrived Dove, Doughton from Newport

## **1849**

March 23 1849 Aberystwith sailed Dove, Edwards for Bristol

April 10 1849 Newport, Mon. cleared Dove, Edwards for Chester  
May 11 1849 Chester sailed Dove, Edwards for Dublin  
June 5 1849 Newport, Mon. arrived Dove, Edwards from Pwllheli  
June 6 1849 Newport, Mon. cleared Dove, Edwards for Portreath  
June 16 1849 Port Talbot arrived Dove, Edwards  
July 11 1849 Aberdovey arrived Dove, Edwards from Caernarvon  
July 19 1849 Aberdovey arrived Dove, Edwards  
August 1 1849 Saundersfoot arrived Dove, Edwards from Aberdovey  
August 13 1849 Drogheda sailed Dove, Edwards for Aberdovey  
August 26 1849 Aberdovey arrived Dove, Edwards from Penrhyndy  
September 11 1849 Newport, Mon. cleared Dove, Edwards for Aberdovey  
September 28 1849 Aberdovey arrived Dove, Edwards from Newport  
October 4 1849 Aberdovey arrived Dove, Edwards  
October 10 1849 Aberdovey sailed Dove, Edwards for Bristol Channel  
October 29 1849 Portmadoc sailed Dove, Edwards for Cardiff  
November 1 1849 Port Madoc sailed Dove, Edwards  
November 12 1849 Newport, Mon. arrived Dove, Edwards from Bridgwater  
November 14 1849 Newport, Mon. cleared Dove, Edwards for Saltney  
December 6 1849 Chester arrived Dove, Edwards from Newport

**1850**

January 7 1850 Holyhead sailed Dove, Edwards for Pwllheli  
January 11 1850 Pwllheli arrived Dove, Edwards from Chester  
February 25 1850 Dublin arrived Dove, Jones from Newcastle  
w/e March 14 1850 Newport, Mon. arrived Dove, Edwards from Pwllheli – iron ore  
March 21 1850 Port Madoc sailed Dove, Jones

April 11 1850 Aberystwith inwards Dove, Edwards

w/e July 4 1850 Flint arrived Dove, Jones

w/e July 4 1850 Flint sailed Dove, Jones

July 17 1850 Aberystwith arrived Dove, Jones from Chester

July 31 1850 Aberystwith arrived Dove, Jones from Chester - bricks

August 1 1850 Aberystwith sailed Dove, Jones for Bristol

August 9 1850 Bristol arrived Dove, Jones from Aberystwith

August 14 1850 Aberystwith sailed Dove, Jones for Bristol

September 1 1850 Aberystwith arrived Dove, Jones from Newport

September 5 1850 Aberystwith arrived Dove, Jones from Newport

September 18 1850 Aberystwith sailed Dove, Jones for Swansea

September 25 1850 Aberystwith sailed Dove, Jones for Swansea

October 2 1850 Swansea sailed Dove, Jones for Aberystwith

October 5 1850 Aberystwith sailed Dove, Jones for Swansea

October 9 1850 Aberystwith arrived Dove, Jones from Swansea

November 14 1850 Aberystwith sailed Dove, Jones for Flint

December 3 1850 Caernarvon passed through the straits Dove, Jones for  
Aberystwith

December 7 1850 Caernarvon sailed Dove, Jones for Portmadoc

December 10 1850 Portmadoc arrived Dove, Jones from Saltney

December 12 1850 Portmadoc arrived Dove, Jones

December 14 1850 Caernarvon sailed Dove, Jones for Aberystwith

## **1851**

January 2 1851 Portmadoc windbound Dove, Jones

January 6 1851 Portmadoc sailed Dove, Jones for Newport

January 7 1851 Aberystwith put in windbound Dove, Jones for Bristol Channel

January 9 1851 Portmadoc sailed Dove, Jones  
February 13 1851 Aberystwith sailed Dove, Jones for Newport  
February 18 1851 Aberystwith sailed Dove, Jones for Newport  
February 19 1851 Newport, Mon. cleared Dove, Jones for Aberystwith  
w/e February 22 1851 Newport, Mon. arrived Dove, Jones from Portmadoc -slates  
February 22 1851 Runcorn sailed Dove, Jones for Amlwch  
March 13 1851 Aberystwith arrived Dove, Jones from Newport  
March 22 1851 Aberystwith sailed Dove, Jones for Bristol Channel  
March 25 1851 Newport, Mon. cleared Dove, Jones for Aberystwith  
March 27 1851 Aberystwith sailed Dove, Jones for Bristol Channel  
May 1 1851 Aberystwith sailed Dove, Jones for Bristol  
May 5 1851 Bristol arrived Dove, Jones from Aberystwith  
May 18 1851 Bideford, Appledore arrived Dove, Jones from Gloucester  
June 2 1851 London customs house entered in Dove, Jones from Bristol  
July 7 1851 London customs house cleared out Dove, Jones for Aberystwith  
July 29 1851 Fowey put in Dove, Jones for Aberystwith from London  
August 5 1851 Ulverstone arrived Dove, Jones from Amlwch  
August 24 1851 Aberystwith sailed Dove, Jones for Llanelly  
August 31 1851 Runcorn arrived Dove, Jones from Bristol  
September 2 1851 Porthcawl sailed Dove, Jones for Port Talbot  
w/e September 6 1851 Llanelly sailed Dove, Jones for Aberystwith  
September 6 1851 Runcorn sailed Dove, Jones for Amlwch  
September 8 1851 Aberystwith arrived Dove, Jones from Llanelly  
September 11 1851 Aberystwith arrived Dove, Jones  
September 24 1851 Runcorn sailed Dove, Jones for Dungarvan  
October 20 1851 Aberystwith sailed Dove, Jones for Flint

w/e October 29 1851 Flint arrived Dove, Jones from Aberystwith

w/e October 29 1851 Flint sailed Dove, Jones for Aberystwith

w/e November 8 1851 Flint sailed Dove, Jones for Aberystwith

November 5 1851 Aberystwith arrived Dove, Jones from Flint

November 26 1851 Aberystwith arrived Dove, Jones from Chester

November 27 1851 Aberystwith sailed Dove, Jones for Llanelly

December 15 1851 Llanelly sailed Dove, Jones for Aberystwith

December 18 1851 Aberystwith arrived Dove, Jones from Llanelly

December 19 1851 Aberystwith sailed Dove, Jones for Llanelly

December 24 1851 Aberystwith arrived Dove, Jones from Llanelly

December 29 1851 Hayle arrived Dove, Jones from Port Talbot

## **1852**

January 14 1852 Hayle sailed Dove, Jones for Swansea

March 4 1852 Milford put in Dove, Jones from Portmadoc for Cardiff

March 6 1852 Milford sailed Dove, Jones for Cardiff from Portmadoc

March 11 1852 Flint arrived Dove, Jones from Aberystwith

March 18 1852 Flint sailed Dove, Jones for Beaumaris

March 19 1852 Beaumaris arrived Dove, Jones from Flint

March 29 1852 Port Penryn, Bangor cleared out Dove, Jones – slates

March 31 1852 Port Penryn, Bangor cleared out Dove, Jones – slates

March 31 1852 Caernarvon passed through the straits from Dove, Jones from  
 . Bangor for Aberystwith

April 25 1852 Caernarvon passed through the straits from Dove, Jones Saltney  
 . for Aberystwith

June 19 1852 Caernarvon passed through the straits from Dove, Jones from  
 . Wepra for Aberystwith

June 20 1852 Aberystwith arrived Dove, Jones from Flint  
June 24 1852 Aberystwith arrived Dove, Jones from Chester  
July 23 1852 Aberystwith sailed Dove, Jones for Bristol  
July 29 1852 Bristol arrived Dove, Jones from Aberystwith  
August 2 1852 Newport, Mon. cleared Dove, Jones for Aberystwith  
August 19 1852 Aberystwith arrived Dove, Jones from Newport  
August 30 1852 Aberystwith arrived Dove, Jones from Flint  
September 9 1852 Aberystwith arrived Dove, Jones from Flint  
September 27 1852 Aberystwith sailed Dove, Jones for Llanelly  
September 29 1852 Llanelly arrived Dove, Jones from Aberystwith  
October 8 1852 Llanelly sailed Dove, Jones for Bridgewater  
October 19 1852 Newport, Mon. cleared Dove, Jones for Aberystwith  
November 4 1852 Aberystwith arrived Dove, Jones from Newport  
November 30 1852 Llanelly sailed Dove, Jones for Aberystwith

**1853**

January 8 1853 Aberystwith windbound lying in harbour loaded Dove, Jones  
January 28 1853 Aberystwith sailed Dove, Jones for Llanelly  
January 30 1853 Llanelly arrived Dove, Jones from Aberystwith  
February 4 1853 Llanelly sailed Dove, Jones for Aberystwith  
February 8 1853 Aberystwith arrived Dove, Jones from Llanelly  
March 6 1853 Aberystwith sailed Dove, Jones for Dublin  
March 29 1853 Aberystwith arrived Dove, Jones from Dublin  
April 7 1853 Aberystwith arrived Dove, Jones  
April 23 1853 Aberystwith sailed Dove, Jones for Llanelly  
April 23 1853 Aberystwith put back Dove, Jones for Llanelly

April 27 1853 Aberystwith sailed Dove, Jones for Llanelly

May 29 1853 Llanelly arrived Dove, Jones from Aberystwith

June 2 1853 Aberystwith sailed Dove, Jones

June 16 1853 Aberystwith arrived Dove, Jones

July 14 1853 Holyhead put in Dove, Jones from Aberystwith for Dee Bank

July 21 1853 Flint arrived Dove, Jones

July 25 1853 Par sailed Dove, Jones for Runcorn

August 13 1853 Beaumaris passed by Dove, Jones for Aberystwith

September 18 1853 Aberystwith arrived Dove, Jones from Llanelly

September 28 1853 Aberystwith arrived Dove, Jones from Llanelly

December 1 1853 Aberystwith sailed Dove, Jones

December 28 1853 Newport, Mon. arrived Dove, Jones from Gloucester – iron

## **1854**

January 12 1854 Aberystwith arrived Dove, Jones from Newport

March 27 1854 Pwllheli put in Dove for Liverpool

June 18 1854 Aberystwith arrived Dove, Jones from Newport – coals

July 10 1854 Queenstown arrived Dove, Davies from Newport

July 30 1854 Llanelly arrived Dove, Davies from Aberystwith

August 2 1854 Aberystwith arrived Dove, Davies from Isle of Man

August 9 1854 Holyhead put in Dove, Davies from Llanelly for Caernarvon

August 11 1854 Holyhead sailed Dove, Davies for Caernarvon

August 29 1854 Aberystwith arrived Dove, Davies from Red Wharf

September 8 1854 Aberystwith arrived Dove, Davies from Newport

September 27 1854 Aberystwith arrived Dove, Davies from Milford

October 26 1854 Pwllheli sailed Dove, Davies

November 8 1854 Newport, Mon. arrived Dove, Davies from Pentundee - sundries

November 29 1854 Aberystwith arrived Dove, Davies from Newport

### **1855**

April 30 1855 Aberystwith sailed Dove, Davies seeking cargo

September 16 1855 Waterford sailed Dove, Davies for Aberystwith - Limestones

November 8 1855 Portmadock arrived Dove, Davies

November 13 1855 Pwllheli put in Dove, Davies for Portmadock from Cardiff

November 15 1855 Portmadock sailed Dove, Davies

December 17 1855 Waterford arrived Dove 28, Davies from Cardiff - Coals

### **1856**

March 12 1856 Aberystwith sailed Dove, Davies for Milford

March 26 1856 Aberystwith arrived Dove, Davies from Milford

April 23 1856 Aberystwith arrived Dove, Davies from Cardiff

### **1857**

September 31 1857 Waterford sailed Dove to Newport - Pitwood

October 25 1857 Carnarvon arrived Dove, Jones from Liverpool

November 5 1857 Waterford sailed Dove - ballast

December 16 1857 Carnarvon arrived Dove, Jones from Dublin

### **1858**

March 4 1858 Port Madock arrived Dove, Jones

June 19 1858 Aberystwith arrived Dove, Jones from Red Wharf

June 25 1858 Aberystwith arrived Dove, Jones from Red Wharf

July 7 1858 Aberystwith sailed Dove, Jones

July 14 1858 Holyhead off the port Dove 28, Jones from Aberystwith

July 15 1858 Liverpool arrived Dove, Jones from Aberystwith

### **1859**

June 4 1859 Pill & Kingroad arrived Dove from Aberystwith & passed to Bristol

June 18 1859 Pill & Kingroad sailed Dove for Aberystwith

July 26 1859 Pill & Kingroad arrived Dove from Aberystwith & passed to Bristol

### **1860**

May 10 1860 Aberystwith arrived Dove, Williams from Llanelly - Coals

May 12 1860 Aberystwith sailed Dove, Williams for Bristol – lead ore

May 17 1860 Bristol arrived Dove, Williams from Aberystwith

June 28 1860 Aberystwith arrived Dove, Williams from Llanelly - Coals

August 27 1860 Pill & Kingroad arrived Dove from Aberystwith & passed to Bristol  
· – Lead ore

September 1 1860 Pill & Kingroad sailed Dove, Williams for Newport - ballast

November 8 1860 Portdinorwic arrived Dove, Rowlands from Caernarvon

### **1861**

April 8 1861 In Runcorn Dove, Jones

May 23 1861 Aberystwith sailed Dove, Jones

August 16 1861 Llanelly arrived Dove, Jones from Aberystwith

October 24 1861 Aberystwith arrived Dove, Jones

### **1862**

April 18 1862 Port Dinorwic sailed Dove, Rowlands for Liverpool

April 18 1862 Beaumaris passed by Dove, Rowlands for Liverpool

June 19 1862 Almwch sailed Dove, Rowlands for Dulas

w/e August 23 1862 Almwch arrived Dove, Rowlands

September 11 1862 Almwch arrived Dove, Rowlands from Moelfre

w/e September 20 1862 Almwch arrived Dove, Rowlands

September 25 1862 Almwch sailed Dove, Rowlands for Douglas

October 7 1862 Almwch sailed Dove, Rowlands for Bangor

October 9 1862 Caernarvon arrived Dove, Rowlands from Isle of Man

w/e November 6 1862 Portdinorwic arrived Dove, Rowlands from Caernarvon

### **1863**

March 12 1863 Amlwch arrived Dove, Rowlands from Mostyn

March 17 1863 Liverpool arrived Dove, Rowlands from Dulas

w/e April 4 1863 Amlwch arrived Dove, Rowlands

May 11 1863 Liverpool arrived Dove, Rowlands from Amlwch

August 15 1863 Liverpool cleared out Dove, Rowlands for Mostyn

w/e September 10 1863 Amlwch arrived Dove, Rowlands from Mostyn

w/e September 10 1863 Amlwch sailed Dove, Rowlands for Dulas

### **1864**

w/e January 7 1864 Port Dinorwic sailed Dove, Rowlands for Liverpool

### **1865**

February 24 1865 Lancaster arrived Dove from Amlwch - Grain

March 23 1865 Portmadock arrived Dove, Owen

April 1 1865 Lancaster arrived Dove from Amlwch - Grain

**1866**

January 24 1866 Almych sailed Dove Williams for Lancaster  
February 18 1866 Almych arrived Dove Williams from Fleetwood  
April 19 1866 Almych sailed Dove Williams for Holyhead  
April 27 1866 Holyhead sailed Dove for Amlwch  
March 7 1866 Almych sailed Dove Williams for Lancaster  
May 16 1866 Amlwch sailed Dove Williams for Pwllheli  
May 23 1866 Pwllhell sailed Dove Williams for Liverpool  
June 17 1866 Liverpool sailed Dove Williams for Almwyh  
July 3 1866 Amlwch sailed Dove Williams for Holyhead  
July 13 1866 Portinllaen sailed Dove Williams for Runcorn  
August 31 1866 Portinllaen arrived Dove, Williams from Llanbedrog  
September 6 1866 Portinllaen arrived Dove, Williams from Llanbedrog  
September 20 1866 Portinllaen sailed Dove Williams to load for Liverpool  
October 5 1866 Dublin arrived Dove from Aberystwith – slates  
October 12 1866 Bristol arrived Dove from Bangor - Slates  
October 15 1866 Runcorn arrived Dove, Williams from Nevin  
October 31 1866 Liverpool sailed Dove Williams for Almwyh  
November 10 1866 Amlwch sailed Dove Williams for Cemlyn

**1867**

May 4 1867 Liverpool cleared out Dove, Owens for Amlwch  
May 18 1867 Amlwch sailed Dove, Owens for Liverpool  
May 25 1867 Liverpool arrived Dove, Owen from Mostyn  
June 10 1867 Liverpool cleared out Dove, Owens for Amlwch

June 12 1867 Liverpool sailed Dove, Owens for Amlwch

June 20 1867 Amlwch arrived Dove, Owen from Liverpool

July 3 1867 Amlwch sailed Dove, Owens for Liverpool

August 5 1867 Runcorn sailed Dove, Owens for Liverpool

August 15 1867 Amlwch arrived Dove, Owen from Liverpool

August 23 1867 Runcorn arrived Dove, Owen from Amlwch

August 31 1867 Liverpool sailed Dove, Owens for Dulas

September 2 1867 Runcorn sailed Dove, Owens for Liverpool

September 27 1867 Amlwch arrived Dove, Owen from Dulas

October 21 1867 Liverpool cleared out Dove, Owens for Holyhead

December 5 1867 Holyhead sailed Dove, Owens for Cymelyn

December 23 1867 Glasson Dock, Lancaster arrived Dove, Owen from Amlwch

December 28 1867 Duddon arrived Dove, Owen from Ellesmere

December 30 1867 Duddon sailed Dove, Owen for Ellesmere

## **1868**

February 6 1868 Holyhead arrived Dove, Owens from Liverpool

April 21 1868 Holyhead Dove of Liverpool, Jones loading for Liverpool on rocks

June 8 1868 Lying at Carnarvon for sale schooner Dove of Liverpool

October 14 1868 Mochras sailed Dove, Lloyd for Portmadoc

November 12 1868 Portmadoc sailed Dove, Lloyd

## **1869**

February 3 1869 Saundersfoot remained loaded Dove, Lloyd for Portinllaen

February 16 1869 Saundersfoot remains Dove, Lloyd for Portinllaen – gales

February 26 Portinllaen discharging culm Dove, Lloyd from Saundersfoot

March 18 1869 Portinllaen sailed Dove, Lloyd for Aberdovey  
March 18 1869 Aberystwith arrived Dove, Lloyd from Portinllaen  
March 19 1869 Aberystwith sailed Dove, Lloyd for Aberdovey  
March 19 1869 Aberdovey arrived Dove, Lloyd from Portinllaen  
March 30 1869 Aberdovey sailed Dove, Lloyd for Gloucester – slates  
w/e April 9 1869 Gloucester arrived Dove, Lloyd from Aberslyfi - slates  
April 17 1869 Gloucester sailed Dove, Lloyd for Carmarthen – 36 tons flour  
May 20 1869 Portinllaen sailed Dove, Lloyd for Chester  
June 22 1869 Swansea arrived Dove, Lloyd from Aberystwith  
July 29 1869 Port Penrhyn, Bangor sailed Dove, Lloyd - slates  
August 4 1869 Holyhead sailed Dove, Lloyd for Wexford  
August 6 1869 Wexford arrived Dove, Lloyd from Bangor  
August 12 1869 Wexford sailed Dove, Lloyd for Bangor  
August 14 1869 Fleetwood unloading Dove  
December 10 1869 Milford sailed Dove, Lloyd for Ulverston  
December 11 1869 Hells Mouth on shore Dove, Lloyd from Milford to Ulverston

**1870**

June 23 1870 Hell's Mouth floated off Dove and towed to Portinllaen  
August 8 1870 Portinllaen sailed Dove, Hughes for Runcorn  
August 11 1870 Portinllaen sailed Dove, Hughes for Runcorn  
August 13 1870 Holyhead arrived Dove, Hughes for Runcorn  
August 15 1870 Portinllaen sailed Dove, Hughes for Runcorn  
August 20 1870 Runcorn arrived Dove, Hughes from Portinllaen  
August 29 1870 Runcorn sailed Dove, Hughes for Port Rush  
September 10 1870 Portrush arrived Dove, Hughes from Runcorn

September 27 1870 Portrush sailed Dove, Hughes for Portinllaen

September 30 1870 Portinllaen arrived Dove, Hughes from Portrush

October 5 1870 Portinllaen arrived Dove, Hughes from Caernarvon - limestone

October 5 1870 Portinllaen sailed Dove, Hughes for Porthysgaden

October 7 1870 Portinllaen arrived Dove, Hughes from Porthysgaden

November 1870 Portinllaen arrived Dove, Hughes from Caernarvon

. - limestones

November 10 1870 Portinllaen arrived Dove, Hughes from Caernarvon

. - limestones

November 20 1870 Laid up, crew discharged

## 1871

January 22 1871 Porthinllaen Dove, Hughes for London is still here

March 27 1871 Aberdaron put in Schooner Dove, Hughes from Abersoch for

. Porthinllaen

April 24 1871 Porthinllaen sailed Dove, Evans for Caernarvon

May 11 1871 Porthinllaen sailed Dove, Evans for Cardiff

May 16 1871 Cardiff arrived Dove, Evans from Portmadoc

May 22 1871 Cardiff sailed Dove, Evans for Britonferry

June 19 1871 Portmadoc arrived Dove, Evans from Abersoch

June 25 1871 Swansea arrived Dove, Evans from Portmadoc

w/e August 2 1871 Portmadoc sailed Dove, Evans

August 5 1871 Porthinllaen sailed Dove, Evans for Gloucester

August 17 1871 Gloucester arrived Dove, Evans from Portmadoc

September 1 1871 Gloucester sailed Dove, Evans for Swansea

September 6 1871 Swansea sailed Dove, Evans for Pwllheli

**1872**

April 7 1872 Portmadoc arrived Dove, Evans from Abersoch

April 11 1872 Portmadoc arrived Dove, Evans

May 10 1872 Portmadoc sailed Dove, Evans for Gloucester

May 14 1872 Gloucester arrived Dove, Evans from Portmadoc

June 15 1872 St Tudwall's put in Dove, Evans from Milford for Abersoch

June 18 1872 St Tudwall's gone into Abersoch to discharge Dove, Evans

June 22 1872 St Tudwall's sailed Dove, Evans for Portmadoc

June 26 1872 Portmadoc arrived Dove, Evans from Abersoch

July 10 1872 Portmadoc sailed Dove, Evans for Newport

July 29 1872 Caernarvon arrived Dove, Evans from Newport

August 7 1872 Portmadoc arrived Dove, Evans from Abersoch

August 17 1872 Portmadoc sailed Dove, Evans for Belfast

August 22 1872 Holyhead arrived Dove, Evans from Portmadoc for Belfast

October 2 1872 Liverpool arrived Dove from Pwllheli

October 16 1872 St Tudwall's put in Dove, Evans from Garston for Penryn Mines

October 17 1872 Pwllheli arrived Dove, Evans from Liverpool

October 30 1872 Newport, Mon. sailed Dove, Evans for Weston

November 1 1872 Abersoch laid up for Winter Dove, Evans

**1873**

April 13 1873 Port Talbot arrived Dove, Evans from Portmadoc

April 24 1873 St Tudwall Roads put in Dove, Evans for Porthinllaen

May 15 1873 Portmadoc arrived Dove, Evans from Abersoch

May 29 1873 Portmadoc sailed Dove, Evans for Swansea

June 17 1873 St Tudwall Roads put in Dove, Evans from Neath to Abersoch

June 25 1873 Portmadoc arrived Dove, Evans from Abersoch

August 4 1873 Newport arrived Dove, Evans from Portmadoc

August 9 1873 Newport, Mon. sailed Dove, Evans for Aberystwith

September 4 1873 Penryndy beached Dove, Evans to discharge – Coals

## **1874**

w/e June 3 1874 Portmadoc arrived Dove, Jones from Abersoch

June 26 1874 Portmadoc sailed Dove, Jones for Cardiff

June 29 1874 Glamorgan Canal, Cardiff arrived Dove, Jones from Portmadoc

. - slates 29

w/e August 8 1874 Portmadoc arrived Dove, Jones from Dublin

w/e September 19 1874 Portmadoc arrived Dove, Jones from Neath – Fire bricks

w/e October 7 1874 Portmadoc arrived Dove, Jones from Newry

November 4 1874 Brittonferry sailed Dove, Jones for Portmadoc

November 12 1874 Portmadoc arrived Dove, Jones from Mochas

w/e November 25 1874 Mochas arrived Dove, Jones from Neath

w/e November 25 1874 Mochas sailed Dove, Jones for Portmadoc

December 1 1874 Pwllheli put in windbound Dove, Jones from Portmadoc for Leith

w/e December 28 1874 Portmadoc arrived Dove, Jones from Neath

## **1875**

February 14 1875 Brittonferry arrived Dove, Jones from Portmadoc

February 25 1875 Milford arrived Dove, Jones from Neath

March 24 1875 Mochas sailed Dove, Jones for Portmadoc

w/e April 10 1875 Pwllheli arrived Dove, Jones from Portmadoc

w/e April 10 1875 Pwllheli sailed Dove, Jones for Neath

April 25 1875 Britonferry sailed Dove, Jones for Portmadoc

June 5 1875 Britonferry arrived Dove, Jones from Portmadoc

June 11 1875 Portmadoc sailed Dove, Jones for Neath

June 17 1875 Britonferry sailed Dove, Jones for Portmadoc

July 4 1875 Llanaelhaian put in Dove, Jones, stress of weather for Caernarvon

w/e July 24 1875 Pwllheli arrived Dove, Jones from Carnarvon

w/e July 24 1875 Pwllheli sailed Dove, Jones for Carnarvon

September 14 1875 Britonferry sailed Dove for Newry

## Appendix B Port & Other Locations

Aberdyfi also known in English as **Aberdovey** is both a village and a community in Gwynedd, Wales, located on the northern side of the estuary of the River Dyfi.

**Beaumaris** is a town on the Isle of Anglesey in Wales, located at the eastern entrance to the Menai Strait, the tidal waterway separating Anglesey from the coast of North Wales.

**Bridgwater** is a large historic market town in Somerset, England. It is at the edge of the Somerset Levels, in level and well-wooded country on the river Parrett from the Bristol channel.

**Caernarfon** is a royal town, and port in Gwynedd, Wales, on the eastern shore of the Menai Strait, opposite the Isle of Anglesey. The city of Bangor is 8.6 miles to the north-east

**Cemlyn** is a village in Anglesey, in north-west Wales. It lies near Cemlyn Bay. It is in the community of Cylch-y-Garn

**Dulas** Bay is on the NE corner of Anglesey. It has an off lying island (Ynys Dulas) and several rocky reefs. The estuary running through Traeth Dulas is that of the Afon Goch (Red River).

**Dee Bank** part of Chester

**Dulas** or City Dulas is a village in Anglesey, in north-west Wales near the coast at only 5 metres above sea level.

**Flint** is a town in Flintshire, Wales, lying on the estuary of the River Dee

**Llanbedrog** is a village on the Llŷn peninsula of Gwynedd in Wales. It is situated on the south side of the peninsula between Pwllheli and Abersoch, formerly in the county of Caernarfonshire,

**Mochras**, is a peninsula lying west of Llanbedr in Gwynedd, Wales, between Barmouth and Porthmadog. It was formed after the River Artro was diverted by the Earl of Winchelsea in 1819 from its previous course where it entered the sea to the south of Mochras.

**Moelfre** is a village, on the north-east coast of the Isle of Anglesey in Wales.

**Mumbles** is a headland sited on the western edge of Swansea Bay on the southern coast of Wales.

**Pembrey** is a village in Carmarthenshire, Wales, situated between Burry Port and Kidwelly, overlooking Carmarthen Bay,

**Penrhyndeudraeth** (Penrhynde) is a small town in the Welsh county of Gwynedd. The town is close to the mouth of the River Dwyryd nearly 3 miles east of Porthmadog,

**Penrhyn** Bay is a small town on the northern coast of Wales, in Conwy county borough, within the parish or community of Llandudno,

**Penryn** is a town in west Cornwall, England, United Kingdom. It is on the Penryn River about 1 mile northwest of Falmouth. The town of Penryn was named by Griffith Griffiths, who opened granite quarries here in 1860, after Penrhyn, Wales.

**Porthdinllaen** is a small coastal village in the Dwyfor locality on the Llŷn Peninsula within Gwynedd, Wales, located on a small promontory, and historically in Caernarfonshire. It is near the larger village of Morfa Nefyn.

**Portrush** is a small town on the north coast of County Antrim, Northern Ireland.

**Porth Ysgaden**, near Tudweiliog was a vital gateway for residents of this remote area. Boats and small ships brought iron, sugar, tea, salt, clothing, tobacco, coal and other goods. They took away local produce, including salted herring. Ysgadan is a Welsh name for herrings.

**Rhosneigr** is a village in the south-west of Anglesey, north Wales.

Traeth Coch is a wide sandy bay on the east coast of the island of Anglesey in Wales. The bay is also known in English as **Red Wharf Bay** and lies between the villages of Pentraeth and Benllech.

**Saltney** is a town adjoining Chester on the England–Wales border with the west part lying in Flintshire and the eastern part in Cheshire.

**Solva** is a village on the south side of St Davids Peninsula in Pembrokeshire, Wales.

**Wepra** is now part of Connah's Quay, Flintshire near Chester

Weston-super-Mare, also known as **Weston**, is a seaside town in Somerset, England. It lies by the Bristol Channel 18 miles south west of Bristol between Worlebury Hill and Bleadon Hill.

**Whithorn**, is a royal burgh in the historic county of Wigtownshire in Dumfries and Galloway, Scotland, about 10 miles south of Wigtown.

**Youghal** is a town in County Cork, Ireland. Located on the estuary of the River Blackwater, the town is a former military and economic centre.

## **Appendix C    Mercantile Navy List**

1860 10651 Dove Beaumaris

1862,1863 No Change

1864 not on line

1865 Dove, Liverpool 29 tons owner B P Evans Jun., Wavertree, Liverpool

1866 no change

1867 not on line

1868 owner John Owens, Penrhosllyyny, Anglesea

1869,1870,1871, No changes

1872 Schooner, owner Hy Griffiths, Llangian, Carnarvonshire

1873 not on line

1874, 1875, 1876 No changes

1877 not on line

1878 owner Hy Griffiths, Castell March, Llangian, Carnarvonshire

1879, 1880 No changes

1881 not on line

1882 Below

1883 No record

→ ↻ [crewlist.org.uk](http://crewlist.org.uk) 🔍 ☆ 📄 ⋮

🏠 Home 🔍 CLIP databases 📧 Contact CLIP

**Mercantile Navy List, 1882, page 254** Ship: DOVE, Sail

Image source: Memorial University Digital Archive Initiative

1882 GO 🔍 Page 254 GO 🔍 Notes 🔍 Search again

254 ALPHABETICAL LIST OF BRITISH REGISTERED SAILING VESSELS.

Official No.	Name of Ship and Port of Registry.	Rig.	Where built.	When built.	International Code Signal (if any).	Registered Tonnage.	Name and Address of <i>Sole</i> Registered Owner, or of <i>Managing</i> Owner when there are more Owners than One.
69126	Dove, Halifax, N.S.	Sr.	Lunenburg, N.S.	1819	..	16	A. Dwight De Wolf, Horton, King's co., N.S.
75344	Dove, Hull	K.	Newhaven	1876	..	70	James Leyman, 179, Bean St., Hull.
10651	Dove, Liverpool	Sr.	Glasson Dock, Lancashire.	1841	..	29	Henry Griffith, Castell March, Llangian, Carnarvonshire.
10729	Dove, London	Spl.	Reading	1841	K.P.R.F	38	Burt Alf. Bennet, Gladstone St., Southwark, Surrey.
11891	Dove, London	Sp.	Reading	1842	..	50	William Thomas, Market St., Lynn.
12575	Dove, London	Sk.	Peel	1849	L.C.K.H	21	Thomas Quilliam, Isle of Man.
9542	Dove, Portsmouth	Sk.	Lymington	1824	K.H.S.C	17	Edward Wm. Hart, Hamble, Hants.
34192	Dove, St. John's, N.F.L.	Sr.	Trinity Bay, N.F.L.	1858	R.J.L.K	42	William Percy, Heart's Content, N.F.L.
34330	Dove, St. John's, N.F.L.	Sr.	Trinity Bay, N.F.L.	1860	R.K.B.P	60	Stephen Rende, St. John's, N.F.L.
34420	Dove, St. John's, N.F.L.	Sr.	Port of St. John's, N.F.L.	1861	R.K.J.P	32	Isaac Bussey, St. John's, N.F.L.
34470	Dove, St. John's, N.F.L.	Sr.	Green Bay, N.F.L.	1861	R.K.N.W	19	Lot Britt, Green Bay, N.F.L.
34657	Dove, St. John's, N.F.L.	Sr.	Bonavista Bay, N.F.L.	1865	..	27	Edwin Duder, St. John's, N.F.L.
34679	Dove, St. John's, N.F.L.	Sr.	Hall's Bay, N.F.L.	1853	..	38	Edwin Duder, St. John's, N.F.L.
52385	Dove, St. John's, N.F.L.	Sr.	(a) Rebuilt Green Bay, N.F.L.	1866	..	26	J. Hopkins Heart's Content, N.F.L.
75961	Dove, St. John's, N.F.L.	Sr.	Green Bay, N.F.L.	1871	..	24	Robert Scott, Fogo, N.F.L.

**Crew Lists**

Held by the Maritime History Archive

- 1863: U2
- 1864: U2
- 1867: U2
- 1868: U2
- 1869: U2
- 1871: U2
- 1872: U2
- 1873: U2

1874: U2

Held by the National Maritime Museum

Reference

1861 RSS/CL/1861/234

1862 RSS/CL/1862/930

1865 RSS/CL/1865/1325

1875 May be ?

1870 Liverpool Archives ( See Appendix E )

## Appendix D Appropriation Book Entry

Appropriation Books, Official Numbers 10651 - 10700 (10651)

Image source [clip](#) CLIP

[Notes](#)

Official Number.	Name of Ship.	Tonnage.	Whether Steam or Sailing Ship.	Port of Registry.	Date of Registry.	Occasion of Appropriation.	Date of Appropriation.
10651	<i>Dora</i>	32	<i>Sailing</i>	<i>Beaumaris</i>	25 <sup>th</sup> Jan 1850	<i>Est<sup>o</sup> presented</i>	1855. July 13
10652	<i>Ferret</i>	90	"	<i>Liverpool</i>	26 Oct 1842	"	" 17
10653	<i>Lady Fife</i>	47	"	<i>Glasgow</i>	1 Aug <sup>th</sup> 1854	"	" 13
10654	<i>Mary</i>	54	"	<i>Caernarvon</i>	21. - 1846	"	" 23
10655	<i>Ann</i>	20	"	<i>Beaumaris</i>	19. - 1849	"	" 31
10656	<i>Phoebe</i>	65	"	"	8 Aug <sup>th</sup> 1855	<i>Reg<sup>o</sup> de Mare</i>	Aug <sup>th</sup> 6
10657	<i>Mary</i>	60	"	"	7 Feb 1842	<i>Est<sup>o</sup> presented</i>	" 9
10658	<i>Brothers</i>	32	"	"	4 Apr <sup>th</sup> 1855	"	" 24
10659	<i>Union</i>	58	"	<i>Beaumaris</i>	16 Nov 1850	"	" 23
10660	<i>Eliza &amp; Catherine</i>	40	"	"	20 July -	"	Sept <sup>th</sup> 6
10661	<i>Victoria</i>	31	"	<i>Abry &amp; Witt</i>	12 Apr <sup>th</sup> 1854	"	" 11
10662	<i>Milly</i>	58	"	<i>Liverpool</i>	10 - 1848	"	" 15

**Appendix E Crew lists Dove of Liverpool 1870**

**List D.** *R. Portinllaen* **PORT OF** *Liverpool* *Amount Paid £*

**ACCOUNT OF VOYAGES AND CREW OF HOME TRADE SHIP, TO BE DELIVERED HALF-YEARLY TO THE SHIPPING MASTER AT THE ABOVE PORT.**

**RECEIVED 2 SEP 70**

**No. 44**

Name of Ship	Tonnage	Port of Registry	Date of Departure	Registered Tonnage	MARRIAGE CERTIFICATE		MARRIAGE		Date of Commencement of Half Year	Date of Termination of Half Year
					Name	Address (care of Home, Street, & Town)	Name	No. of Certificate		
<i>"Dove"</i>	<i>1067</i>	<i>Liverpool</i>	<i>20th Dec 1869</i>	<i>29</i>	<i>John Humphrey Hughes</i>	<i>Liverpool</i>	<i>John Humphrey Hughes</i>	<i>Liverpool</i>	<i>1st Dec 1869</i>	<i>31st Dec 1869</i>

**ACCOUNT OF THE VOYAGES. (\*)**

*The above vessel was driven ashore at Hell's Mouth in Dec 1869 and became nearly a wreck but was sold and floated off and brought to Portinllaen 23rd June 1870. There were no crew employed during the six months.*

**RECEIVED 17 JUL 70**

**ACCOUNT OF THE CREW AND OF OTHER PARTICULARS REQUIRED BY LAW, IN RESPECT OF THE ABOVE-MENTIONED VOYAGES OR EMPLOYMENT OF THE SAID SHIP.**

Name—Class, last address etc. to be filled in by the Shipping Master.				Age	Town and County where born.	No. of Paid Tonnage (if any).	No. of Paid Tonnage (if any).	Ship in which he last served, and Port the subject is, or place of Employment.	Date and Place of Discharge from each Ship.		Date and Place of joining this Ship.		In what Capacity Employed, and if both Nos. of his Certificate (if any).	Date, Place, and Cause of Death, or Leaving this Ship, also of Re-joining or Discharge.														
Ships and Dates of Discharge.		Date and Place of joining this Ship.							Date	Place	Date	Place		Date	Place	Cause (see Note 2).												
<table border="1"> <thead> <tr> <th colspan="2">Ships and Dates of Discharge.</th> <th colspan="2">Date and Place of joining this Ship.</th> </tr> <tr> <th>Ships</th> <th>Dates</th> <th>Date</th> <th>Place</th> </tr> </thead> <tbody> <tr> <td> </td> <td> </td> <td> </td> <td> </td> </tr> </tbody> </table>				Ships and Dates of Discharge.		Date and Place of joining this Ship.		Ships	Dates	Date	Place																	
Ships and Dates of Discharge.		Date and Place of joining this Ship.																										
Ships	Dates	Date	Place																									

*Signature required*

The above vessel was driven ashore at Hell's mouth in Dec 1869 and became nearly a wreck but was sold and floated off and brought to Portinllaen 23<sup>rd</sup> June 1870. There were no crew employed during the six months.

**List D. PORT OF *Carmarthen***  
**No. 101 ACCOUNT OF VOYAGES AND CREW OF HOME TRADE SHIP, TO BE DELIVERED HALF-YEARLY TO THE SHIPPING MASTER AT THE ABOVE PORT.**

Amount of Fee £ *1/6*

Name of Ship	Tonnage	Port of Registry	Date She left Date of Departure	Registered Tonnage	SEAMAN'S OFFICER			MASTER			Date of Commencement of Voyage	Date of Termination of Voyage
					Name	Address (Street, No. of House, Street, & Town)	Rank	No. of Certificates	Address (Street, No. of House, Street, & Town)			
<i>"Dove"</i>	<i>1151</i>	<i>Liverpool</i>	<i>in 1855</i>	<i>29</i>	<i>High Hughes</i>	<i>Lynch, Llanelli</i>	<i>High Hughes</i>	<i>---</i>	<i>Lynch, Llanelli</i>	<i>14 July 1856</i>	<i>21 Aug 56</i>	

ACCOUNT OF THE VOYAGES (\*)

*Swire to Swansea sails 16 August 1856. 20 August. Swansea to Port Rash sails 29 August 1856. 11 Sept. Port Rash to Llanelli sails 27 Sept 1856. 30 Sept and 3 Voyages of Llanelli from Carmarthen to Llanelli ending 10 Nov and commencing 11 Nov.*

ACCOUNT OF THE CREW AND OF OTHER PARTICULARS REQUIRED BY LAW, IN RESPECT OF THE ABOVE-MENTIONED VOYAGES OR EMPLOYMENT OF THE SAID SHIP.

Merchant Seaman's Particulars				Name of the MASTER and the CREW-Christen and Signature to be set here on full length (see Note 3)	Age	Town and County where born	No. of Feet (if any)	No. of Eyes (if any)	Days in which he last served, and Port also belonged to, or name of Employment	Date and Place of Discharge from such Ship		Date and Place of joining this Ship		In what Capacity Employed, and if Master, No. of Lic. (Certificate, if any)	Date, Place, and Name of Vessel, or Leaving this Ship, and of Mating or Discharge		
Paid	Amount	Date	Place							Date	Place	Date	Place		Date	Place	Class (see Note 4)
				<i>High Hughes</i>	<i>46</i>	<i>Swire</i>			<i>Swire ship</i>		<i>Continues</i>			<i>Master</i>			<i>Swire</i>
				<i>John Herbert</i>	<i>34</i>	<i>Colyton</i>			<i>do</i>		<i>do</i>			<i>Mate</i>	<i>20 Nov</i>	<i>Llanelli</i>	<i>Swire</i>
				<i>James Thomas</i>	<i>12</i>	<i>Llanelli</i>			<i>do</i>		<i>do</i>			<i>Boy</i>	<i>do</i>	<i>do</i>	<i>do</i>

TOTAL ..

ACCOUNT OF APPRENTICES ON BOARD.						PARTICULARS RELATING TO WAGES AND EFFECTS OF DECEASED SEAMEN (see Note 4).								
Name of Apprentice (Surname and Christian name at full length)	Age	Time of Birth, stating Place of Birth or County	Registry of Indenture		Registry of Discharge (if any)		Name of Deceased Seaman, Christian and Surname at full length.	No. of Feet, or Certificate, or PT N. (if any)	Date and Place paid to Shipping Master, or not Assured in Part III.	Particulars of Effects (if any) delivered to Shipping Master, as per Assent in Part III.	Notes 1.-This List, with the completion of the 15th, of the List and of the crew, whenever, is to be ready filed up and signed by the Clerk or Master of every Home Trade Vessel, of whatever Tonnage, and to be deposited with the Shipping Master at some Port in the United Kingdom, within fourteen days after the 15th day and the 1st December in every year, under a penalty and penalty of £5.			
			Date of	Port of	Date of	Port of					£	s	d	

Received at *Porthcawl* the *21st* day of *January* 185*6*  
 by *High Hughes* Shipping Master.

I Declare the above Account to be true.  
 Signed *High Hughes* Master or Owner.

\* The Shipping Master should obtain from the Master of the Ship the Certificate (Form KV 2. or S.E.) belonging to any Seaman who has died or deserted, and forward the same to the Registrar General with this Return. Should the Master have had his Certificate should also be obtained and forwarded in the manner.

LONDON: PRINTED BY GEORGE EDWARD EYRE AND WILLIAM SPOTTISWOODE, PRINTERS TO THE QUEEN'S MOST EXCELLENT MAJESTY. [OVER]



Fig. 3 The cart in the 1886 photo of Porth Ysgaden (courtesy of local history website Rhiw.com) appears to be moving a delivery of limestone, which was burned with coal near the beach

**Appendix F Probate of Hugh Humphrey Hughes**

England & Wales, National Probate Calendar (Index of Wills and Administratio...

1887 > Hoad-Juvet

**HUGHES Hugh.**

Personal Estate £6,252 17s. 1½d.

23 December. The Will of Hugh Hughes late of Glynpadarn in the Parish of Llanbadarnfawr in the County of **Cardigan** Solicitor who died 14 September 1887 at Glynpadarn was proved at the **Principal Registry** by Hugh Hughes of Glynpadarn Solicitor the Son the sole Executor.

**HUGHES Hugh Humphrey.**

Personal Estate £95 6s.

9 December. Administration of the Personal Estate of Hugh Humphrey Hughes late of Ty'rbugail in the Parish of Llangian in the County of **Carnarvon** who died 14 November 1887 at Ty'rbugail was granted at the **Principal Registry** to Catherine Hughes of Ty'rbugail Widow the Relict.

**HUGHES Isaac**

Personal Estate £21 15s.

5 August. The Will of Isaac Hughes late of Brynffynone near Grovesend in the Parish of Llandilotalybont in the County of **Glamorgan** Labourer who died 6 May 1887 at Brynffynone was proved at **Carmarthen** by Mary Richards (Wife of David Richards) of Brynffynone the Daughter the sole Executrix.

**ROOSE- } Jane Anne.**  
**HUGHES }**

Personal Estate £1,745 8s. 10d.

Resworn August 1887 £1,805 8s. 10d.

28 February. The Will of Jane Anne Roose-Hughes late of 4 Menai - villas Menai Bridge in the County of **Anglesea** Widow who died 19 January 1887 at 4 Menai-villas was proved at **Bangor** by the Reverend Thomas Henry Platt Mouldale of Ballysumaghan Rectory Collooney Ireland Clerk the Nephew one of the Executors.