

**Welsh Wreck Web Research Project  
(North Cardigan Bay)  
On-line research into the Sinking of:  
SS Ferga (Steamship)**



**1917, Coastal Cargo Steamship**

**Report compiled by:  
Gareth J.S. Davies**

Report Title: **Welsh Wreck Web Research Project  
(North Cardigan Bay)  
On-line research into the Sinking of:  
SS Ferga (Steamship)**

Compiled by: **Gareth J.S. Davies**  
Manila, Philippines  
Email/Skype: [davies\\_j\\_gareth@hotmail.com](mailto:davies_j_gareth@hotmail.com)

On behalf of: **Nautical Archaeology Society**  
Fort Cumberland  
Fort Cumberland Road  
Portsmouth  
PO4 9LD  
Tel: +44 (0)23 9281 8419  
E-mail: [nas@nauticalarchaeologysociety.org](mailto:nas@nauticalarchaeologysociety.org)  
Web Site: [www.nauticalarchaeologysociety.org](http://www.nauticalarchaeologysociety.org)

Managed by: **Malvern Archaeological Diving Unit**  
17 Hornyold Road  
Malvern  
Worcestershire  
WR14 1QQ  
Tel: +44 (0)1684 574774  
E-mail: [MADUdiving@gmail.com](mailto:MADUdiving@gmail.com)  
Web Site: [www.madu.org.uk](http://www.madu.org.uk)

Date: **March 2021**

Report Ref: ***Leave blank***

## **1.0 Abstract**

Since 2001 the Malvern Archaeological Diving Unit (MADU) has developed a database of vessels known to have wrecked around the coast of Wales.

This project is to discover information relating to the history of the steamship SS Ferga built at Dublin Dockyard Company, Dublin in 1916.

On Feb 14 1917, the SS Ferga was stopped by the German U-boat UC-65 approximately 15 miles S of Bardsey Island. The crew was offloaded and the SS Ferga sunk.

The research has been conducted from information gathered from MADU and on-line sites as I do not reside in the U.K.

## 2.1 Tables of Contents Page No.

<b>1.0 Abstract</b> .....	3
<b>2.0 Index</b> .....	4
2.1 Table of Contents .....	4
2.2 List of Tables .....	4
2.3 List of Figures .....	4
2.4 Contributors .....	4
2.5 Abbreviations .....	5
2.6 Appendices .....	5
<b>3.0 Introduction</b> .....	6
<b>4.0 Background</b> .....	7
<b>5.0 Research Methodology</b> .....	8
<b>6.0 Results</b> .....	9
<b>7.0 Analysis</b> .....	10
<b>8.0 Conclusions &amp; Recommendations</b> .....	13
<b>9.0 References</b> .....	14
9.1 Online WebPages .....	14
9.2 Personal Correspondences .....	14

## 2.2 List of Tables

Table 1. Extract from MADU Master Wrecksite Database .....	7
Table 2. SS Ferga (Steamship) Specification and History .....	9
Table 3. UC-65 (U-boat) Specification and History .....	11
Table 4. C-15 (Submarine) Specification and History .....	12

## 2.3 List of Figures

Front Page: 1917, Coastal Cargo Steamship .....	1
Fig 1:       Reported Location of the Sinking of the SS Ferga .....	7

## 2.4 Contributors

Ian Cundy       MADU Archaeological Diving Unit,  
                   Nautical Archaeology Society (Regional co-ordinator for Wales)

## 2.5 Abbreviations

MADU Malvern Archaeological Diving Unit  
 MNL Mercantile Navy List  
 LR Lloyds' Registry

## 2.6 Appendices

<b>Appendix A:</b>	Appropriation Book 1916, SS Ferga -----	15
<b>Appendix B:</b>	Mercantile Navy Listing 1917, SS Ferga -----	15
<b>Appendix C:</b>	Report of U-Boat attack on SS Ferga, Feb 13 1917-----	15
<b>Appendix D:</b>	UC Class Mine laying U-Boat 1917 -----	16
<b>Appendix E:</b>	Reported Sinking of SS Ferga, Feb 15 1917 -----	16
<b>Appendix F:</b>	Lloyd's Casualty Listing 1917, SS Ferga -----	17
<b>Appendix G:</b>	C-15 at Sea -----	17
<b>Appendix H:</b>	C Class British Submarines -----	18
<b>Appendix I:</b>	Location of UC-65 Wreckage, English Channel -----	18

### **3.0 Introduction**

The steamship SS Ferga was chosen as:

- it covered a period of sea history covering WW1.
- it was a similar ship and time to other ships I had researched from the MADU Wreck list.
- I live overseas online information would be my priority research tool and similar to my previous research a ship from this period should be reasonably well documented online.

The following topics form the basis of the research:

- What were the vessel's specifications?
- What historical information is available relating to the vessel?
- Has any salvage, etc. been carried out?
- Have there been any previous reports produced relating to the vessel?

## 4.0 Background

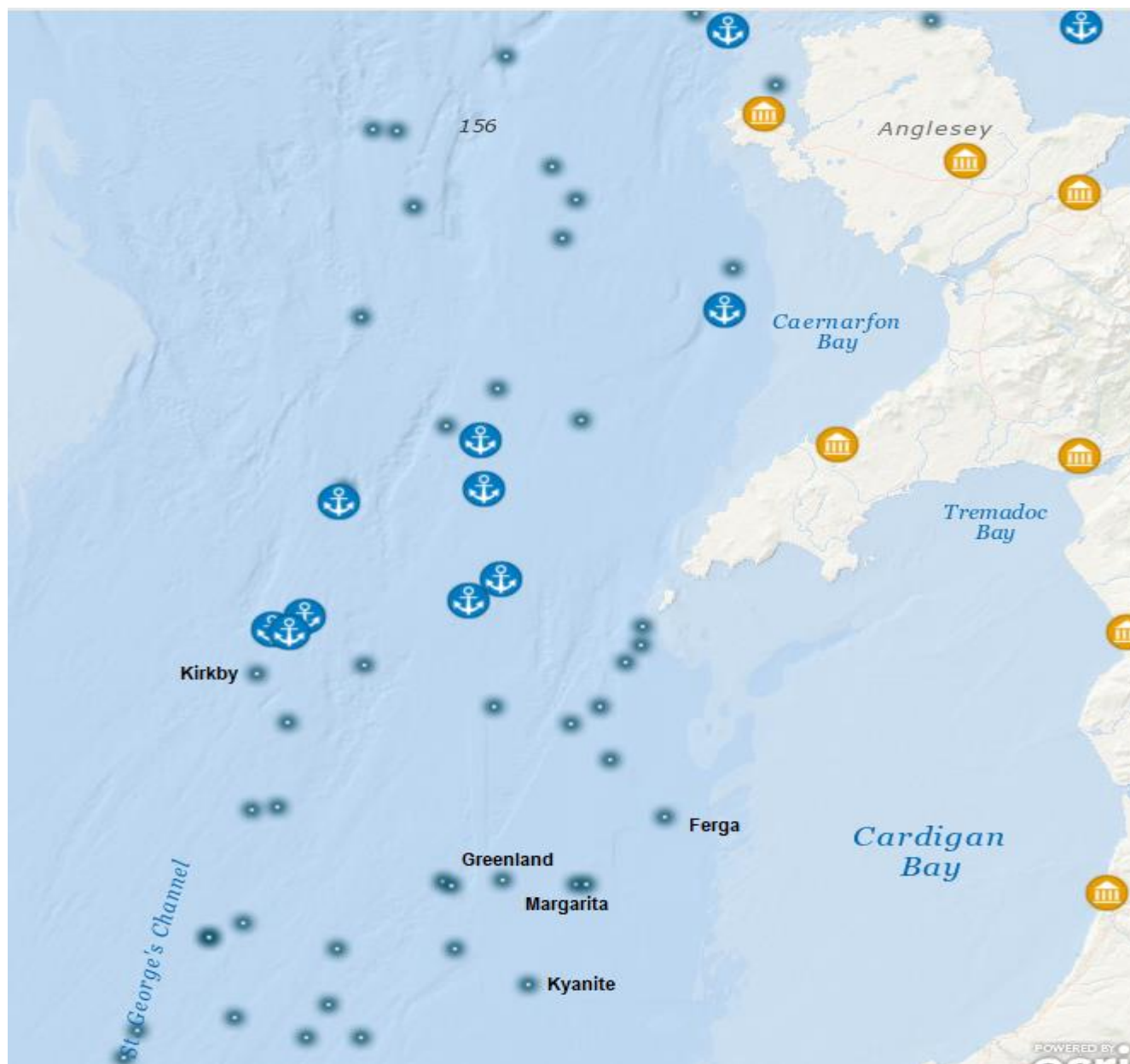
Prior to starting this research the only known data available to me was from the MADU Master Wrecksite Database Listing (Table 1) supplied by Mr Ian Cundy.

**Table 1: Extract from MADU Master Wrecksite Database**

MADU Ref. No.	Date Wrecked	Name	Location 1	Location 2	Details	Vessel Type	Matls	Ref.
	14/02/1917	Ferga	off Bardsey Island	15 miles S		Stm	Stl	RHIW / COF

On Feb 13 1917, the SS Ferga put in at Swansea after being attacked by a German U-boat. On Feb 14 1917, the SS Ferga sailed from Swansea for Liverpool. 15 miles S of Bardsey Island the SS Ferga was stopped by the U-boat UC-65 and sunk.

**Fig 1: Reported Location of the Sinking of the SS Ferga**



## 5.0 Research Methodology

### Computer System

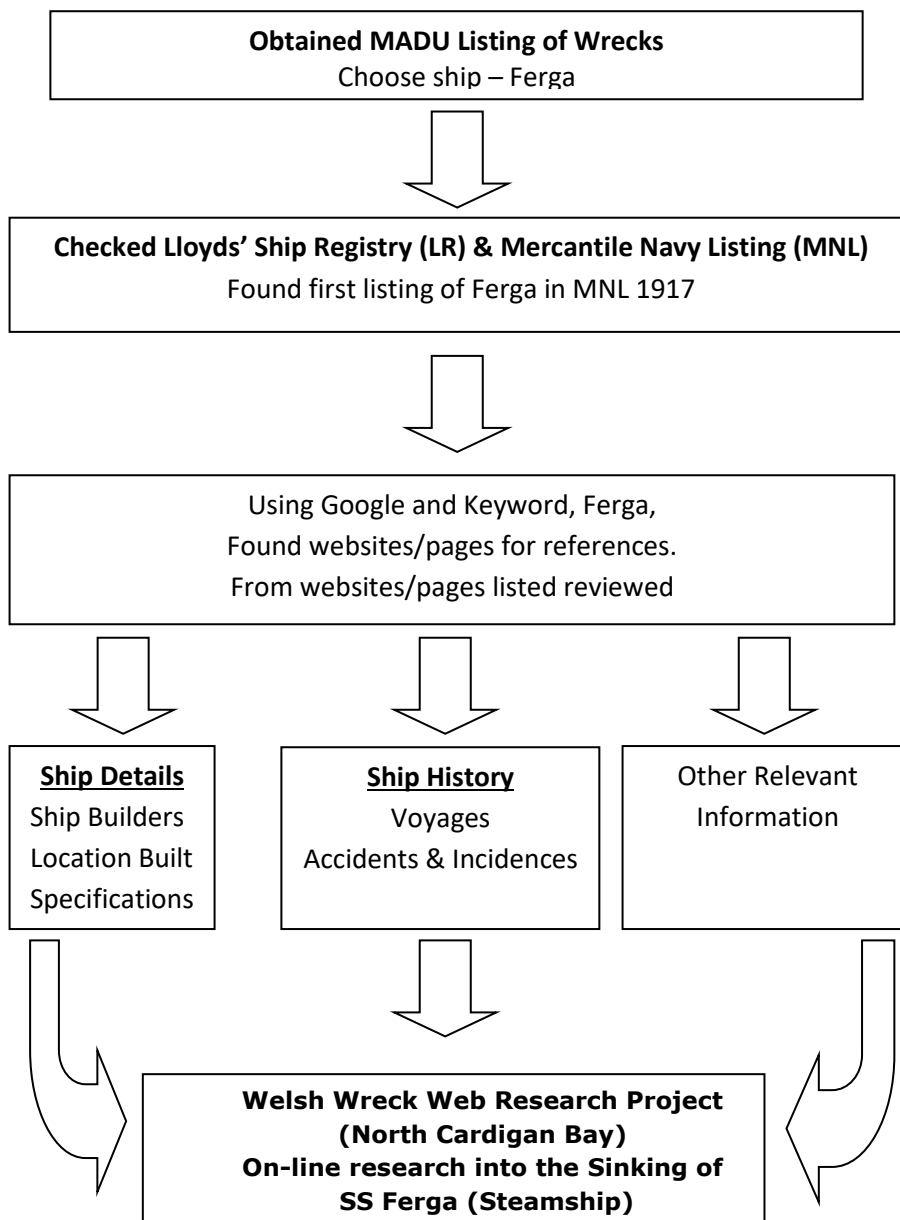
Acer Desktop 64 bit OS; 8 GB Memory, wireless connection.

Windows 10Pro

Microsoft Office 2007

Search engines used: Google Chrome

### Methodology



See Section 9 for list of websites viewed

## 6.0 Results

**Table 2: SS Ferga (Steamship) Specification and History**

Vessel	Name/s	SS Ferga		
	Type	Coaster Steamship General Cargo		
Built	Date	Laid Down: N/A		
		Launched: 20/01/1916		
		Delivered: 07/1916		
		Cost: N/A		
Builder	Dublin Dockyard Company			
	Dublin. Yard #: 90			
Construction	Materials	Steel		
	Decks	1		
	Bulkheads	5		
	Others	q/deck 119ft, b/deck 9ft, f/castle 29ft; machinery aft		
Propulsion	Type	Steam		
		Single screw		
Engine	Details	T3cyl, engine aft		
		N/A		
		H.P: 155 nhp		
		Ross & Duncan, Glasgow		
Boilers	1 steel boiler			
Drive	Type	Propeller		
	Number	1		
Dimensions	Length	197 ft	5 ins	m
	Beam	30 ft	6 ins	m
	Draught	12 ft	8 ins	m
Tonnage	Gross	791 grt		
	Net	315 nrt		
	Deadweight	N/A dwt		
Owner	First	Michael Murphy Ltd. - J. O'Dowd, Cardiff		
Registry	Port	Cardiff		
	Flag	GBR		
	Number	139593		
	Code	J.M.W.N.		
History	Routes	Cardiff, Swansea, Liverpool		
	Cargo	General		
Final Voyage	From	Swansea		
	To	Liverpool		
	Captain	Thomas Henry Callister		
	Crew	N/A		
	Passengers	0		
	Cargo	General		
	Date	14/02/1917		
	Location	50° 02'N, 5° 04'W; 15 miles S of Bardsey Island		
	Cause	Captured by U-boat UC-65		
	Loss of life	2 crewmen injured		
	Outcome	Sunk by gunfire		

## 7.0 Analysis

- The steamship SS Ferga was built and launched at Dublin Dockyard Company in August 1916 for Michael Murphy Ltd. of Cardiff (Appendix A, B).
- SS Ferga conducted coastal voyages between Swansea/Cardiff to Liverpool. The SS Ferga was only in service for 6 months.
- Feb 13 1917, SS Ferga put into Swansea having been attacked by a U-boat (Appendix C).
- Feb 14 1917, stopped by U-boat UC-65 (Appendix D) and scuttled (Appendix E, F).
- Feb 15 1917, the crew of the SS Ferga was safely landed.

From newspapers the SS Ferga was recorded:

### 1916

Aug 01: Sailed Cardiff for Swansea, light.  
Aug 21: Arrived Cardiff.  
Oct 27: Sailed Cardiff for Swansea.  
Oct 31-Nov 01: Sailed Liverpool for Cardiff.  
Nov 08: Sailed Cardiff for Swansea.  
Nov 21: Sailed Cardiff for Swansea.  
Nov 27: Sailed Cardiff for Swansea.  
Nov 28: Sailed Swansea for Liverpool.  
Dec 05: Sailed Cardiff for Swansea.  
Dec 13: Sailed Swansea for Liverpool.

### 1917

Feb 13: Put in to Swansea and reported having been attacked by submarine. A patrol boat in the vicinity had resulted in the submarine diving.  
Sailed from Swansea for Liverpool.  
Feb 14: Sunk by U-boat UC-65, 15 miles S of Bardsey Island.

**Table 3: UC-65 (U-boat) Specification and History**

Vessel	Name/s	UC-65
	Type	UC 11 submarine
Built	Date	Ordered: Jan 12 <sup>th</sup> 1916
		Launched: July 8 <sup>th</sup> 1916
		Delivered: Nov 7 <sup>th</sup> 1916
		Cost: N/A
	Material	Steel
	Builder	Blohm & Voss, Hamburg; Yard #281
	Owner	Imperial German Navy – Kaiserliche Marine
Dimensions	Length	50.35 m
	Beam	5.22 m
	Draught	3.63 m
Tonnage	Gross	427t (surface); 508t (submerged)
Propulsion	Type	2 x propeller shafts
Engine	Details	2x6 cyl, 4-stroke diesel, 600PS 400 kW; 590 shp) 2 Siemens-Schuckert electric motors, 620 PS 460 kW; 610 shp HP: 500
	Speed	12 knts (surface); 7.4 knts (submerged)
	Range	10,420 nat miles at 7 knts surface; 52 nat miles at 4 knts submerged
	Depth	50m
Armaments		6 × 100 cm (39.4 in) mine tubes 18 × UC 200 mines 3 × 50 cm (19.7 in) torpedo tubes (2 bow/external; one stern) 7 × torpedoes 1 × 8.8 cm (3.5 in) Uk L/30 deck gun
Operations	Captains	Kptlt. Otto Steinbrinck, 10 November 1916 – 31 July 1917 Kptlt. Max Viebeg, 1 August – 3 September 1917 Kptlt. Claus Lafrenz, 4 September – 3 November 1917
	Crew	27
	Patrols	11
	Sinkings/ Damaged	105 merchant ships sunk 116,218 grt 11 merchant ships damaged 64,712 grt 1 warship sunk 11,000 grt 1 warship damaged 850 grt
Wrecking	Date	3/11/1917
	Location	50°31'N 00°27'E.
	Cause	Torpedoed by HM SubC15
	Loss of life	22 dead and 5 survivors
	Outcome	Wreck. UC-65 lies at a maximum depth of 50m

- On 1 February 1917 Germany declared a renewal of 'unrestricted submarine warfare' in a last ferocious attempt to force an end to the First World War.
- Almost immediately, major losses of merchant ships occurred in Welsh waters. Thirteen ships were sunk off Bardsey Island and the Pembrokeshire coast in that month alone – all by the U-boat, UC-65, captained by Otto Steinbrinck, one of the most successful German U-boat commanders of the war.
- UC-65 also patrolled in the North Sea, and coast of France. On Nov 3 1917, at 16h45, HM Sub C-15 (Appendix G, H) fired two torpedoes and obtained one hit on the stern of UC-65, which sank immediately (Appendix I). Only the five men on the bridge (incl. Commander Lafrenz) survived, the rest of the crew, 22 in total, were killed.

**Table 4: C-15 (Submarine) Specification and History**

Vessel	Name/s	HMS C15 (Appendix C, D)
	Type	C-class submarine
Built	Date	Laid Down: Dec 7 <sup>th</sup> 1906
		Launched: Jan 21 <sup>th</sup> 1908
		Delivered: Apr 1 <sup>st</sup> 1908
		Cost: N/A
	Material	Steel
	Builder	Vickers, Barrow Cumbria
	Owner	British Royal Navy
Dimensions	Length	142 ft 2.5in
	Beam	13 ft 7in
	Draught	11 ft 2in
Tonnage	Gross	287t (surface); 316t (submerged)
Propulsion	Type	1 x electric motor
Engine	Details	1x16 cyl Vickers petrol engine 600 bhp, 450kW 300hp, 220 kW electric
	Speed	12 knts (surface); 7 knts (submerged)
	Range	910 nat miles at 12 knts surface; 52 nat miles at 4 knts submerged
	Depth	100 ft
	Crew	2 x officers, 14 crew
Armaments		2 × 18 in (450 mm) bow torpedo tubes 800 yards @ 26.5 knots, 118 lbs. wet gun-cotton warhead 2 reloads
	Outcome	Scrapped Feb 1922

## **8.0 Conclusions & Recommendations**

The project took approximately 2 working days with 1 day of that time spent on on-line research.

Having read the report, sufficient information has been collated to compile a comprehensive history of the steamship SS Ferga.

The SS Ferga was only in service for approximately 6 months after being launched sailing between South Wales and Liverpool. On the day previous to her sinking the SS Ferga had been attacked by a U-boat but the presence of a patrol boat resulted in the U-boat diving and sailing away.

Many different WebPages were viewed ranging from large organisations e.g. Lloyd's Registry Listings to smaller WebPages such as local history or people with a given interest in a subject. The quantity and quality of the WebPages appeared depended on the targeted audiences and the amount of work undertaken. Some of the historical and interest in a subject WebPages were extremely useful. Newspaper archives were also very helpful in giving an overall picture of the operation of the ship and filling in information gaps.

Much of the data collated between websites checked out with some discrepancies observed.

A few WebPages viewed led to pay to view pages. However in most cases the information was obtained from other sources.

From the research conducted, setting a goal and how to reach that goal should be mapped out first. Careful use of specific words in search engines is very important. Due to the name a more specific search through archived newspapers was made using specific newspapers to view e.g. Lloyd's List. This vastly reduced the number of articles but keep the search focused.

## 9.0 References

### 9.1 Online WebPages

The following websites and pages have been used in the compilation of this report:

<https://www.britishnewspaperarchive.co.uk/>

Keyword: steamship Ferga

<https://coflein.gov.uk/en/site/274835/details/ferga>

<https://www.crewlist.org.uk/data/vesselsalpha>

<https://www.crewlist.org.uk/data/viewimages?data/viewimages>

[http://shippingandshipbuilding.uk/view.php?official\\_number=&imo=&builder=&builder\\_eng=&year\\_built=&launch\\_after=&launch\\_before=&role=&type\\_ref1=&propulsion=&owner=&port=&flag=&disposal=&lost=&ref=203104&vessel=FERGA](http://shippingandshipbuilding.uk/view.php?official_number=&imo=&builder=&builder_eng=&year_built=&launch_after=&launch_before=&role=&type_ref1=&propulsion=&owner=&port=&flag=&disposal=&lost=&ref=203104&vessel=FERGA)

<https://www.google.co.uk/>

<https://hec.lrfoundation.org.uk/archive-library/casualty-returns>

<https://hec.lrfoundation.org.uk/archive-library/lloyds-register-of-ships-online>

<https://newspapers.library.wales/>

<https://rcahmw.gov.uk/one-hundred-years-ago-today-2/>

<http://www.rhiw.com/>

<https://www.tigerbay.org.uk/ships-cardiff-owned-and-operated>

<https://uboat.net/wwi/>

[https://uboat.net/wwi/ships\\_hit/2157.html](https://uboat.net/wwi/ships_hit/2157.html)

<https://uboat.net/wwi/types/?type=U+63>

<https://uboatproject.wales/>

<https://uboatproject.wales/test-esri-map/>

[https://en.wikipedia.org/wiki/HMS\\_C15](https://en.wikipedia.org/wiki/HMS_C15)

<https://www.wrecksite.eu/wreck.aspx?58429>

[https://en.wikipedia.org/wiki/SM\\_UC-65](https://en.wikipedia.org/wiki/SM_UC-65)

### 9.2 Personal Correspondences

I would like to thank Mr Ian Cundy for supplying the initial information and other information with regards to the research project.

**Appendices:**

**Appendix A: Appropriation Book 1916, SS Ferga**

Official Number.	Name of Ship.	Tonnage.	Whether Steam or Sailing.	Port of Registry.	Date of Registry.
1	<i>Hirose</i>	107	Steam	Cardiff	9.16
2	<i>Muirra</i>	107	Steam	"	10.16
3	<i>Ferga</i>	315	Steam	"	12.16
4	<i>Egntree</i>	1333	Steam	"	13.16
5	<i>Portrush</i>	2416	Steam	"	14.16
6	<i>S. Baruch</i>	Nil	Steam	"	15.16
7	<i>Ferry No 2</i>	14	Steam	"	16.16
8	<i>Carmarthen</i>	2690	Steam	"	17.16
9	<i>Kumishi</i>	111	"	"	17.16

**Appendix B: Mercantile Navy Listing 1917, SS Ferga**

Official No.	Name of Ship.	International Code Signal (if any).	Port and Year of Registry.	Where Built.	When Built.	Whether Iron, Wood, Steel, or Composite.	Dimensions.			Registered Tonnage.		Horse Power of Engines and description of Propeller.	Owner, or Part Owner, and Manager (if recorded). × Signifies Managing Owner. Italics signify Manager.
							Length.	Breadth.	Depth of Hold.	Net Tonnage.	Gross Tonnage.		
76303	Fenella . . .	J.C.T.G	Douglas, 1881 . . .	Barrow . . .	1881	Iron	200 0	26 0	13 0	238	564	152 Sc.	Is. of Man S. Pekt. Co. Lim., Douglas, Isle of Man.
101573	Fenella . . .	..	Port Natal, 1902 . . .	East London . . .	1899	Wood	60 4	11 4	6 0	15	26	128 Sc.	William M. Corkill, Imperial Bldg., Douglas.
120532	Fengtien . . .	H.C.P.T	London, 1905 . . .	Greenock . . .	1905	Steel	267 5	40 1	17 1	1073	1765	325 Sc.	Irvin & Johnson, Lim., Cape Town.
132342	Fennew . . .	..	Yarmouth, 1911 . . .	Yarmouth . . .	1911	Wood	83 0	19 0	9 3	29	85	24 Sc.	China Nav. Co., Lim., 8, Billiter Sq., City, London. John Sicre, same address.
134757	Fentonian . . .	..	Grimaby, 1913 . . .	Selby . . .	1912	Steel	120 4	21 6	11 5	99	221	70 Sc.	Horatio Fenner, Lim., Fish Wharf, Yarmouth.
122221	Ferdinand . . .	..	Montreal, 1906 . . .	St. Antoine, Que. . .	1903	Wood	87 0	17 6	5 4	48	76	28 Sc.	Leonard F. Fenner, same address. ×William Grant, Fish Docks, Grimsby.
130898	Ferga . . .	J.M.W.N	Cardiff, 1916 . . .	Dublin . . .	1916	Steel	137 5	30 6	12 8	315	791	155 Sc.	La Cie de Navigation, St. Laurent-Richelieu, Lim., Montreal, Quebec.
109805	Fermo . . .	..	Grimaby, 1898 . . .	Beverley . . .	1898	Iron	100 2	21 0	11 6	71	175	45 Sc.	Michael Murphy, Lim., 3, Beresford Place, Dublin. Joseph O'Dowd, same address.
124646	Fern . . .	..	Banff, 1907 . . .	Banff . . .	1907	Wood	87 0	19 1	8 8	33	85	30 Sc.	The Ocean Steam Fishing Co., Lim., Grimsby.
111274	Fern . . .	R.S.N.D	Glasgow, 1909 . . .	Troon . . .	1900	Steel	180 2	29 0	12 1	175	444	133 Sc.	Ernest de L. Road, Grimsby. ×Geo. Watt, II, Finlayson Street, Fraserburgh.
107504	Fern . . .	..	Quebec, 1898 . . .	Quebec . . .	1895	Wood	22 2	5 5	1 8	1	2	14 Sc.	George S. MacLellan, West Lodge, Downanhill, Glasgow. Archibald L. MacConnell & Robert G. Turnbull, 52, Robertson Street, Glasgow.
115543	Fern . . .	..	Yarmouth, 1903 . . .	Yarmouth . . .	1902	Wood	79 0	18 4	8 1	34	39	20 Sc.	Thophile Magnan, St. Thecle, Champlain, Quebec.
138223	Fernande . . .	..	Montreal, Que. 1916 . . .	Montreal, Que. . .	1916	Wood	23 2	6 9	5 0	3	4	*6 Sc.	×John W. George, Beach Rd., Winterton, Norfolk.
127430	Fernandina . . .	H.M.K.R	Hartlepool, W., 1908 . . .	Howdon-on-Tyne . . .	1908	Steel	276 0	40 5	18 6	1146	1851	205 Sc.	David Dion, 1902, Papineau Avenue, Montreal, Que. Furness, Wither & Co., Lim., Royal Liver Building, Liverpool.

**Appendix C: Report of U-Boat attack on SS Ferga, Feb 13 1917**

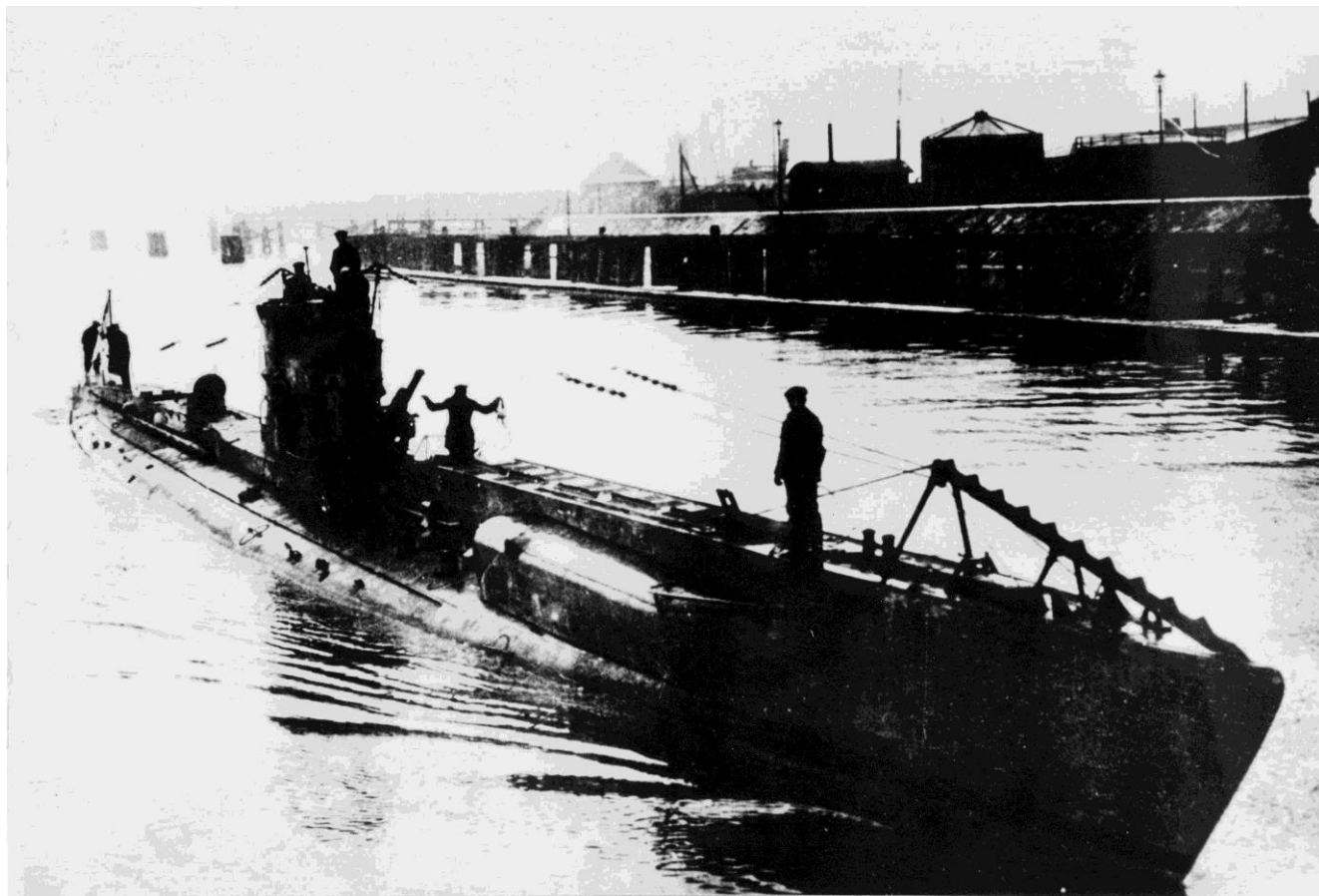
**ESCAPED FROM SUBMARINE.**

The crew of the steamer **Ferga**, of Cardiff, put its port to-day, and reported having been attacked by a submarine without warning. Fortunately no one was injured. A patrol boat appeared in sight, and the submarine immediately disappeared.

Lloyd's report that the British steamer **Cilicia** as been sunk. The crew have been landed.

The trawler **King Alfred GY 127** was sunk by submarine yesterday afternoon. Nine of the crew were landed. The master was taken prisoner.

The crew of the trawler **Barnsley**, previously reported sunk, have been landed.

**Appendix D: UC Class Mine laying U-Boat 1917****Appendix E: Reported Sinking of SS Ferga, Feb 15 1917**

**THE SUBMARINE HAUL.**

Lloyd's Agency issues the following report—The British steamer Ferga was sunk by a German submarine yesterday morning. The crew was landed by a patrol steamer. The trawler Ashwold and the steamer Margarita (375 tons gross), sunk. The steam trawler Ireland, of Hull, sunk by submarine. The crew landed by a patrol boat. The crew were 90 hours in open boats. Two of the crew were frost-bitten, and were sent to hospital. A steamer signalled on Tuesday—"I have been in collision with the steamer Cavado, of Lisbon, which sank. Have master and seven men on board."

**Appendix F: Lloyd's Casualty Listing 1917, SS Ferga**

**LLOYD'S REGISTER OF SHIPPING.**

**RETURNS OF VESSELS TOTALLY LOST, CONDEMNED, &c.**

**1ST JANUARY TO 31ST MARCH, 1917.**

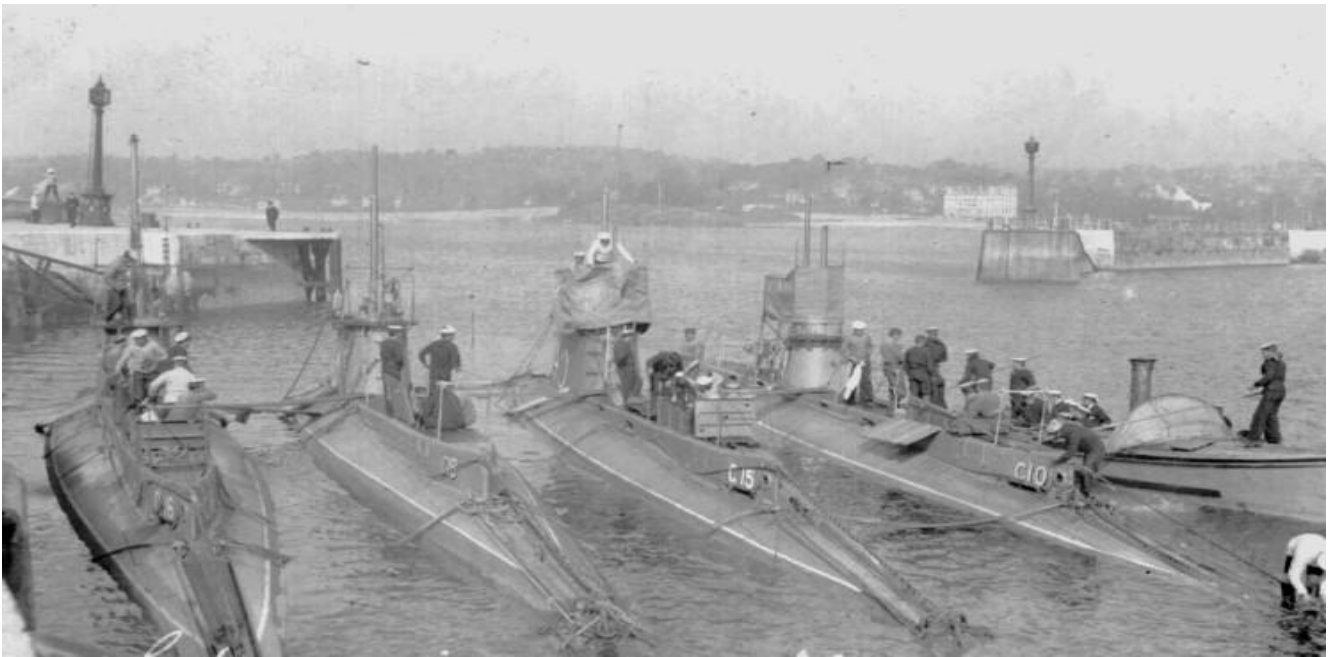
(i.) War Losses—continued.

No. in Reg. Book. 1916-17.	Vessel's Name.	Tons.		Nationality.	Description.	No. in Reg. Book. 1916-17.	Vessel's Name.	Tons.		Nationality.	Description.
		Net.	Gross.					Net.	Gross.		
5	F. D. Lambert.....	1321	2195	U.K.	Std. Sc.	552	Ivernia .....	916	1427	U.K.	Std. Tw. Sc.
37	Fairearn .....	261	592	U.K.	Std. Sc.	70	Jacamar .....	128	293	U.K.	Std. Sc.
2	Falcon .....	1332	2243	U.K.	Std. Sc.	71	Jacatra .....	3425	5373	U.K.	Std. Sc.
Sup. 176	Fenai Lodge .....	2075	3223	U.K.	Std. Sc.	160	Japanese Prince .....	3079	4876	U.K.	Std. Sc.
26	Ferga .....	315	791	U.K.	Std. Sc.	267	Jevington.....	1739	2747	U.K.	Std. Sc.
Sup. 362	Floridian .....	2997	4777	U.K.	Std. Sc.	364	John Miles.....	342	687	U.K.	Std. Sc.
24	Folia .....	4211	6705	U.K.	Std. Tw. Sc.	439	Joshua Nicholson .....	1196	1853	U.K.	I Sc.
Sup. 432	Foreland .....	1134	1960	U.K.	Std. Sc.	245	Katherine .....	1891	2926	U.K.	Std. Sc.
634	French Prince.....	3129	4766	U.K.	Std. Sc.	273	Kathleen Lily .....	317	521	U.K.	W. Sc.
680	Frimaire .....	1119	1778	U.K.	Std. Sc.	337	Kelvinhead .....	1946	3063	U.K.	Std. Sc.
682	Frinton .....	2707	4194	U.K.	Std. Sc.	397	Kestrel .....	74	181	U.K.	I. Sc.
710	Frolic.....	79	183	U.K.	I. Sc.	485	Kincardine .....	2568	4108	U.K.	Std. Sc.
73	Gafsa .....	2462	3974	U.K.	Std. Sc.	491	King Alfred .....	66	159	U.K.	Std. Sc.
Sup. 53	Galatia .....	63	150	U.K.	I. Sc.	986	Kyamite .....	224	564	U.K.	Std. Sc.
114	Garfield .....	2442	3838	U.K.	Std. Sc.	107	Laconia .....	11226	8099	U.K.	Std. Tw. Sc.
255	Geo. E. Benson .....	60	155	U.K.	Std. Sc.	118	Lady Ann .....	630	1016	U.K.	I. Sc.
296	Georgian .....	3318	5088	U.K.	Std. Sc.	149	Lady Olive .....	296	701	U.K.	Std. Sc.
362	Ghazee .....	3220	5084	U.K.	Std. Sc.	308	Laurentic.....	9235	14892	U.K.	Std. Trp. Sc.
437	Gladys .....	106	275	U.K.	Std. Sc.	364	Ledbury.....	1931	3046	U.K.	Std. Sc.

**Appendix G: C-15 at Sea**



## Appendix H: C Class British Submarines



From left to right; HMS C-16, HMS C-18, HMS C-15 and HMS C-10 at Torquay, England.

## Appendix I: Location of UC-65 Wreckage, English Channel

