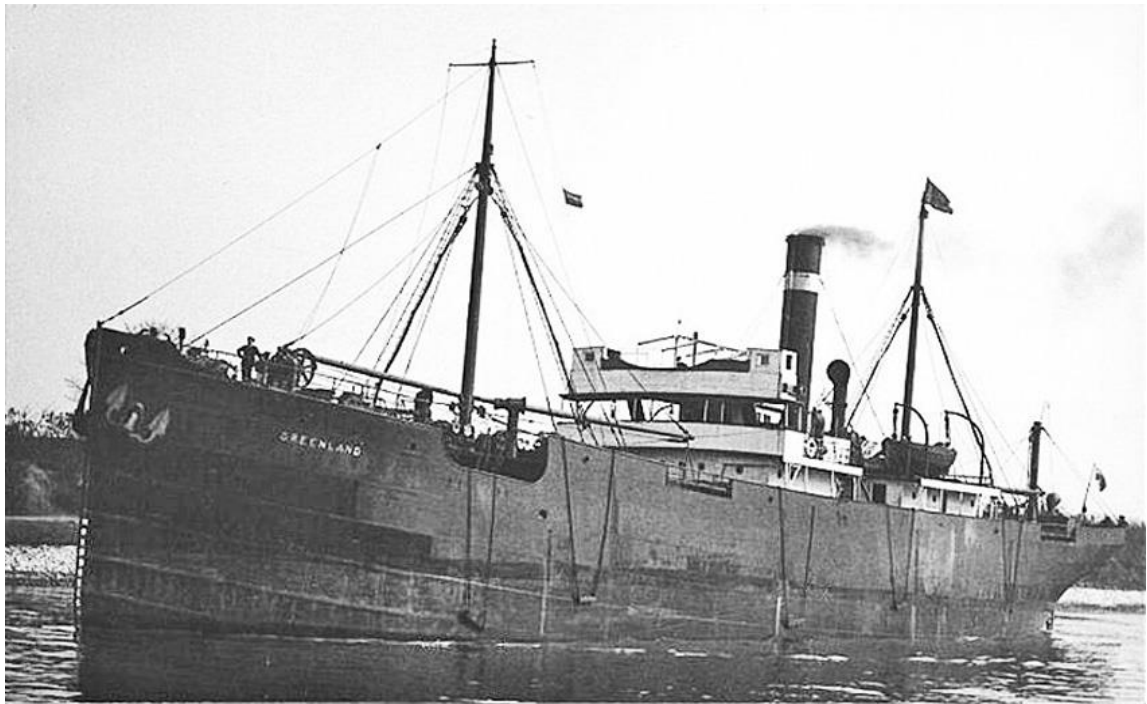


**Welsh Wreck Web Research Project
(North Cardigan Bay)
On-line research into the Sinking of:
SS Greenland (Steamship)**



SS Greenland

**Report compiled by:
Gareth J.S. Davies**

Report Title:

**Welsh Wreck Web Research Project
(North Cardigan Bay)
On-line research into the Sinking of:
*SS Greenland (Steamship)***

Compiled by:

Gareth J.S. Davies
Manila, Philippines
Email/Skype: davies_j_gareth@hotmail.com

On behalf of:

Nautical Archaeology Society
Fort Cumberland
Fort Cumberland Road
Portsmouth
PO4 9LD
Tel: +44 (0)23 9281 8419
E-mail: nas@nauticalarchaeologysociety.org
Web Site: www.nauticalarchaeologysociety.org

Managed by:

Malvern Archaeological Diving Unit
17 Hornyold Road
Malvern
Worcestershire
WR14 1QQ
Tel: +44 (0)1684 574774
E-mail: MADUdiving@gmail.com
Web Site: www.madu.org.uk

Date:

March 2021

Report Ref:

Leave blank

1.0 Abstract

Since 2001 the Malvern Archaeological Diving Unit (MADU) has developed a database of vessels known to have wrecked around the coast of Wales.

This project is to discover information relating to the history of the steamship SS Greenland built at Barclay, Curle & Co. Ltd for Liverpool & Hamburg Steamship Co. Ltd. in 1908.

The SS Greenland ran a fortnightly voyage between Liverpool and Hamburg. At the onset of WW1 the route ceased and the SS Greenland sailed to ports in Europe and Russia.

On Feb 14 1917, the SS Greenland was stopped by the German U-boat UC-65 approximately 20 miles SW of Bardsey Island. The crew was offloaded and the SS Greenland sunk by torpedoes.

The research has been conducted from information gathered from MADU and on-line sites as I do not reside in the U.K.

2.1 Tables of Contents	Page No.
1.0 Abstract	3
2.0 Index	4
2.1 Table of Contents	4
2.2 List of Tables	4
2.3 List of Figures	4
2.4 Contributors	4
2.5 Abbreviations	5
2.6 Appendices	5
3.0 Introduction	6
4.0 Background	7
5.0 Research Methodology	8
6.0 Results	9
7.0 Analysis	10
8.0 Conclusions & Recommendations	15
9.0 References	16
9.1 Online WebPages	16
9.2 Personal Correspondences	16

2.2 List of Tables

Table 1. Extract from MADU Master Wrecksite Database	7
Table 2. SS Greenland (Steamship) Specification and History	9
Table 3. UC-65 (U-boat) Specification and History	13
Table 4. C-15 (Submarine) Specification and History	14

2.3 List of Figures

Front Page: SS Greenland	1
Fig 1: Reported Location of the Sinking of the SS Greenland	7

2.4 Contributors

Ian Cundy MADU Archaeological Diving Unit,
 Nautical Archaeology Society (Regional co-ordinator for Wales)

2.5 Abbreviations

MADU	Malvern Archaeological Diving Unit
MNL	Mercantile Navy List
LR	Lloyds' Registry

2.6 Appendices

Appendix A:	Arrival at Liverpool, November 09 1908 -----	17
Appendix B:	SS Greenland -----	17
Appendix C:	Appendix C: Appropriation Book 1908, SS Greenland -----	18
Appendix D:	Mercantile Navy Listing 1909, SS Greenland -----	18
Appendix E:	Collision with Trawler, Feb 14 1910 -----	19
Appendix F:	Report of near drowning in Liverpool Docks, Aug 03 1910 -----	19
Appendix G:	UC Class Mine laying U-Boat 1917 -----	20
Appendix H:	Reported Sinking of SS Greenland, Feb 14 1917 -----	20
Appendix I:	Lloyd's Casualty Listing 1917, SS Greenland -----	21
Appendix J:	C-15 at Sea -----	22
Appendix K:	C Class British Submarines -----	22
Appendix L:	Location of UC-65 Wreckage, English Channel -----	23

3.0 Introduction

The steamship SS Greenland was chosen as:

- it covered a period of sea history covering WW1.
- it was a similar ship and time to other ships I had researched from the MADU Wreck list.
- I live overseas online information would be my priority research tool and similar to my previous research a ship from this period should be reasonably well documented online.

The following topics form the basis of the research:

- What were the vessel's specifications?
- What historical information is available relating to the vessel?
- Has any salvage, etc. been carried out?
- Have there been any previous reports produced relating to the vessel?

4.0 Background

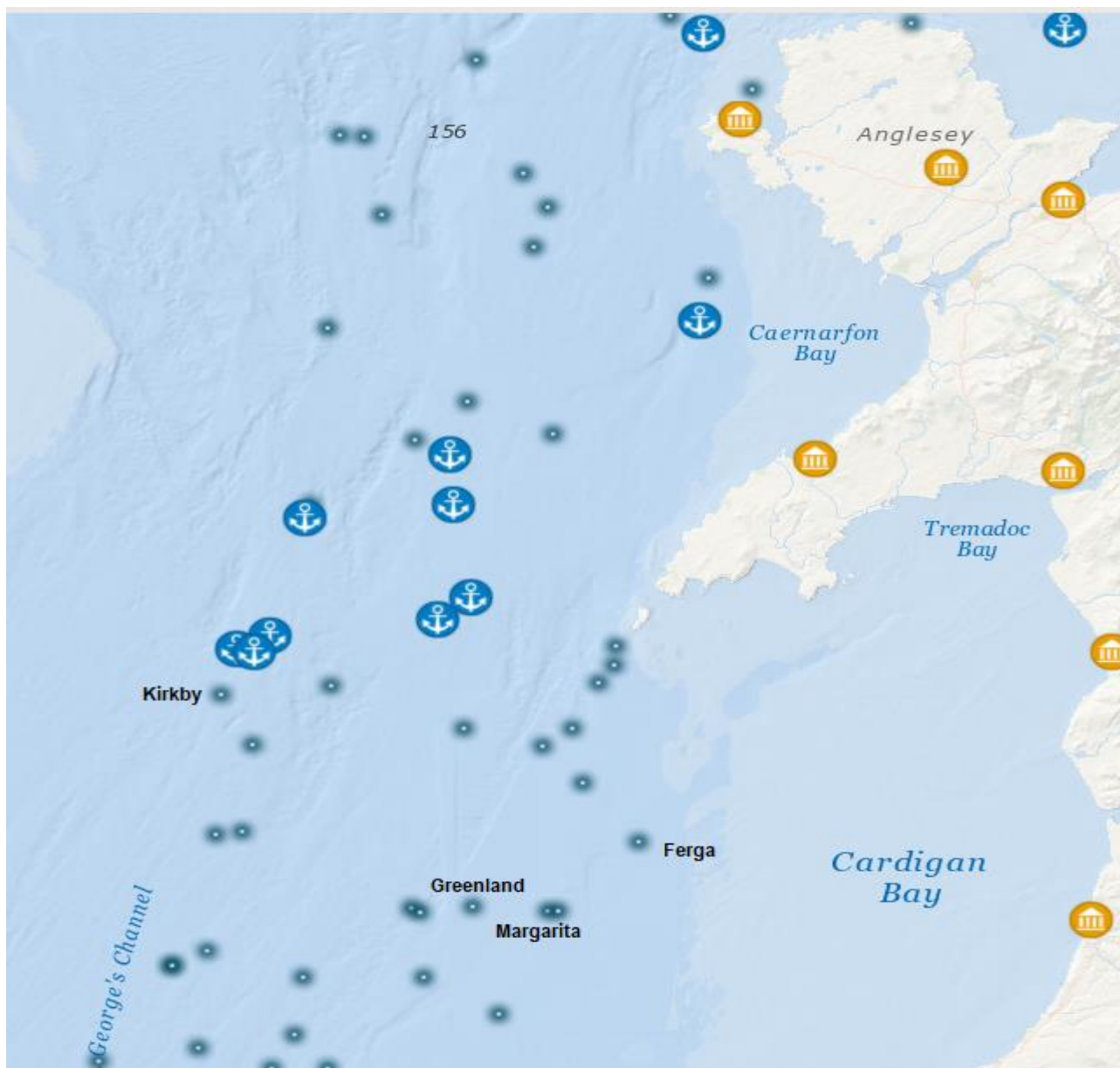
Prior to starting this research the only known data available to me was from the MADU Master Wrecksite Database Listing (Table 1) supplied by Mr Ian Cundy.

Table 1: Extract from MADU Master Wrecksite Database

MADU Ref. No.	Date Wrecked	Name	Location 1	Location 2	Details	Vessel Type	Matls	Ref.
	14/02/1917	Greenland	Off Bardsey Island	52.30N 05 05W, 20mi SW		Stm	Stl	RHIW / COF

On Feb 14 1917, the SS Greenland sailing from Fleetwood Lancashire to Cherbourg was stopped by the German U-boat UC-65. The crew abandoned the SS Greenland which was torpedoed and sunk.

Fig 1: Reported Location of the Sinking of the SS Greenland



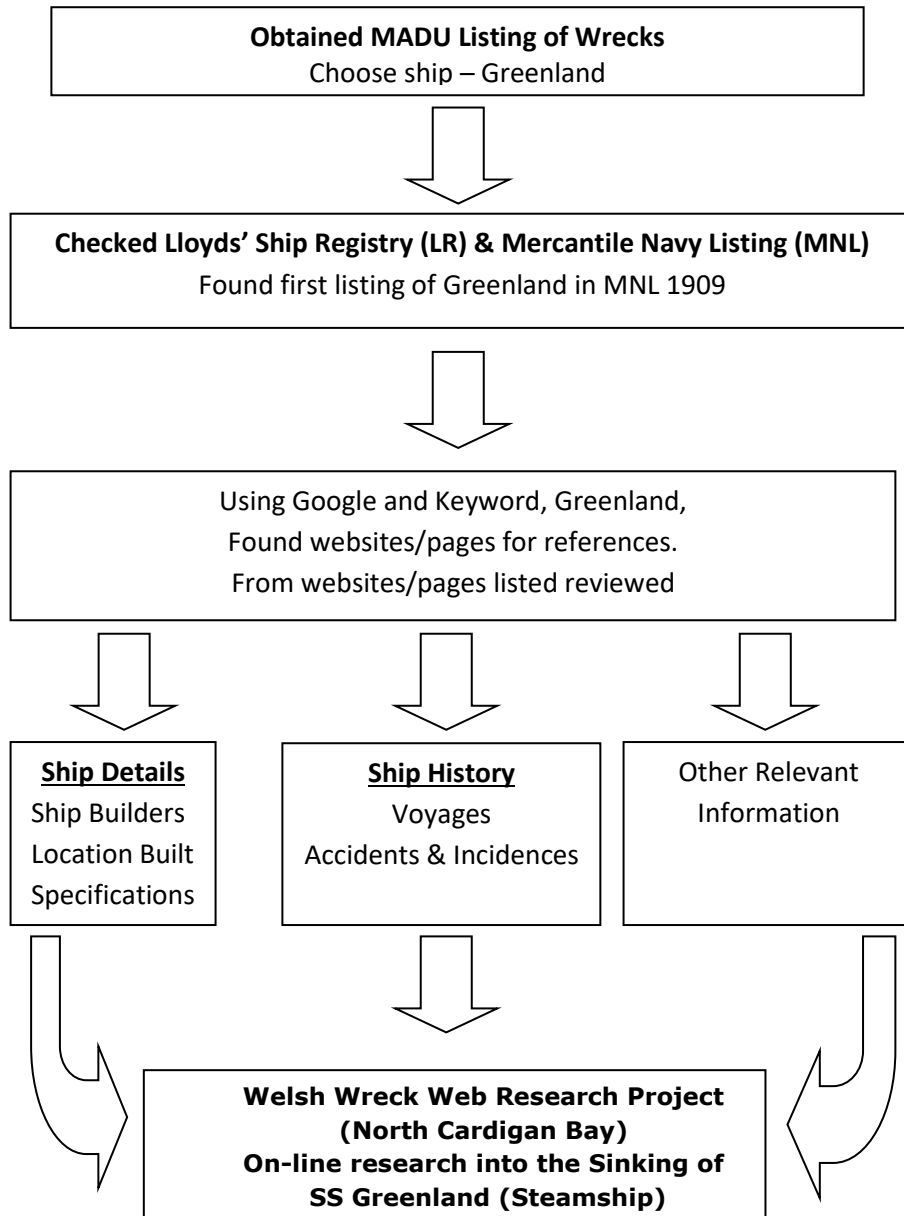
5.0 Research Methodology

Computer System

Acer Desktop 64 bit OS; 8 GB Memory, wireless connection.
Windows 10Pro
Microsoft Office 2007

Search engines used: Google Chrome

Methodology



See Section 9 for list of websites viewed

6.0 Results

Table 2: SS Greenland (Steamship) Specification and History

Vessel	Name/s	SS Greenland		
	Type	Steamship General Cargo		
Built	Date	Laid Down: N/A		
		Launched: 29/09/1908		
		Delivered: 10/1908		
		Cost: N/A		
Builder	Barclay, Curle & Co. Ltd.			
	Glasgow. Yard: Clydeholm Yard; Yard #: 473			
Construction	Materials	Steel		
	Decks	1		
	Bulkheads	4		
	Others	b/deck 73ft, f/castle 33ft, classed at Lloyd's 100 A1		
Propulsion	Type	Steam		
		Single screw		
Engine	Details	T3Cyl		
		19.5, 34, 55 x 42in		
		H.P: 246 nhp; 1200ihp; 10.5 knots		
		Barclay, Curle & Co. Ltd.		
Boilers	2 steel boiler, 180lb			
Drive	Type	Propeller		
	Number	1		
Dimensions	Length	260 ft	0 ins	m
	Beam	36 ft	0 ins	m
	Draught	14 ft	6 ins	m
Tonnage	Gross	1753 grt		
	Net	866 nrt		
	Deadweight	N/A dwt		
Owner	First	Liverpool & Hamburg Steamship Co. Ltd. – D. Currie & Co., London		
Registry	Port	Liverpool; 29/10/1908		
	Flag	GBR		
	Number	127939		
	Code	H.N.J.D.		
History	Routes	Liverpool, Hamburg. WW1: Europe, Russia		
	Cargo	Cotton, general cargos		
Final Voyage	From	Fleetwood Lancashire		
	To	Cherbourg France		
	Captain	A. Vincent		
	Crew	35		
	Passengers	0		
	Cargo	Government stores		
	Date	14/02/1917		
	Location	52° 30'N, 5° 05'W 20 miles SW of Bardsey Island		
	Cause	Stopped and scuttled with explosive charges by UC-65		
	Loss of life	0.		
	Outcome	Sunk.		

7.0 Analysis

- The steamship SS Greenland was built and launched (Appendix A, B) at Barclay, Curle & Co. Ltd. Clydeholm Yard Glasgow in 1908 for Liverpool & Hamburg Steamship Co. Ltd. (Appendix C, D).
- SS Greenland conducted fortnightly round trips between Liverpool and Hamburg.
- Feb 13 1910, the SS Greenland collided with the steam trawler Belle heading for Ijmuiden Netherlands about 5 miles NE of the Hook Lightship. The Belle sank with the loss of 10 men (Appendix E).
- From late 1914 and due to WW1 the SS Greenland stopped sailing to Hamburg and started sailing to ports in France, Portugal, Sweden and Russia
- Feb 14 1917, departed Fleetwood Lancashire for Cherbourg France with a cargo of government supplies. On the afternoon of Feb 14, the SS Greenland was fired upon by the U-boat UC-65 (Appendix G). The crew were offloaded and the SS Greenland sunk by torpedoes (Appendix H, I). A reference suggests the life boat containing the crew of the SS Greenland was towed by the UC-65 towards the coast
- Feb 15 1917, the crew of the SS Greenland landed safely ashore.

From newspapers the SS Greenland was recorded:

1908:

Sep 26:	Launched at Glasgow.
Nov 04-06:	Sailed Greenock for Liverpool. Nov 4/6: arr/dep Whitehaven.
Nov 13-29:	Sailed Liverpool-Hamburg-Liverpool.
Dec 04-17:	Sailed Liverpool-Hamburg-Liverpool. Dec 8: grounded in the Lower Elbe. Assisted off, no damage.
Dec 23-28:	Sailed Liverpool for Hamburg.

1909:

Jan 05-09:	Sailed Hamburg for Liverpool.
Jan 15-27:	Sailed Liverpool-Hamburg-Liverpool.
Feb 07-23:	Sailed Liverpool-Hamburg-Liverpool.
Feb 27-10:	Sailed Liverpool-Cuxhaven-Hamburg-Liverpool.
Mar 14-31:	Sailed Liverpool-Hamburg-Liverpool.
Apr 03-25:	Sailed Liverpool-Hamburg-Liverpool. Apr 6/7: arr/dep Southampton. Apr 10/11: arr/dep Bremen.
Apr 30-May 14:	Sailed Liverpool-Hamburg-Liverpool.
May 18-Jun 01:	Sailed Liverpool-Hamburg-Liverpool.
Jun 06-19:	Sailed Liverpool-Hamburg-Liverpool. Jun 9/10: arr Cuxhaven.
Jun 26-Jul 10:	Sailed Liverpool-Hamburg-Liverpool.
July 15-29:	Sailed Liverpool-Hamburg-Liverpool.
Aug 04-17:	Sailed Liverpool-Hamburg-Liverpool.
Aug 22-Sep 05:	Sailed Liverpool-Hamburg-Liverpool.
Sep 12-28:	Sailed Liverpool-Hamburg-Liverpool.
Oct 07-20:	Sailed Liverpool-Hamburg-Liverpool.
Oct 27-Nov 11:	Sailed Liverpool-Hamburg-Liverpool.
Nov 17-Dec 03:	Sailed Liverpool-Hamburg-Liverpool.
Dec 09-23:	Sailed Liverpool-Hamburg-Liverpool.
Dec 30-Jan 06:	Sailed Liverpool for Hamburg via Southampton.

1910

Jan 11: Sailed Hamburg for Liverpool.
 Jan 22-Feb 06: Sailed Liverpool-Hamburg-Liverpool.
 Feb 10-25: Sailed Liverpool-Hamburg-Liverpool.
 Feb 14: Collided with unknown steam trawler 5 miles NE of Hook LS.
 Mar 14-15: Sailed Liverpool-Whitehaven-Liverpool.

Mar 20-Apr 07: Sailed Liverpool-Hamburg-Liverpool.
 Apr 13-26: Sailed Liverpool-Hamburg-Liverpool.
 May 04-16: Sailed Liverpool-Hamburg-Liverpool.
 May 06: arr/dep Southampton

May 24-Jun 06: Sailed Liverpool-Hamburg-Liverpool.
 Jun 09-25: Sailed Liverpool-Hamburg-Liverpool.
 Jun 17: dep Bremerhaven

Jun 30-Jul 13: Sailed Liverpool-Hamburg-Liverpool.
 Jul 20-31: Sailed Liverpool-Hamburg-Liverpool.
 Aug 03: Steward of the SS Greenland saved a man from drowning in Liverpool Docks (Appendix F).

Aug 05-21: Sailed Liverpool-Hamburg-Liverpool.
 Aug 26-Sep 07: Sailed Liverpool-Hamburg-Liverpool.
 Sep 14-26: Sailed Liverpool-Hamburg-Liverpool.
 Oct 05-18: Sailed Liverpool-Hamburg-Liverpool.
 Oct 23-Nov 06: Sailed Liverpool-Hamburg-Liverpool.
 Nov 13-27: Sailed Liverpool-Hamburg-Liverpool.
 Dec 01-12: Sailed Liverpool-Hamburg-Liverpool.
 Dec 17-21: Sailed Liverpool for Hamburg.

1911

Jan 03: Arrived Liverpool from Hamburg.
 Jan 08: Sailed Liverpool for Hamburg.
 Jan 30: Sailed Liverpool for Hamburg.
 May 10: Arrived Liverpool from Hamburg with 50 bales of cotton.
 Jul 06: Sailed Liverpool for Hamburg.
 Oct 25: Arrived Liverpool from Hamburg with 400 bales of cotton.

1912

May 15: Arrived Liverpool from Hamburg with 63 bales of cotton.
 June 22: Arrived Liverpool from Hamburg with 52 bales of cotton.
 Jul 17: Arrived Liverpool from Hamburg with 437 bales of cotton.
 Aug 01: Arrived Liverpool from Hamburg.
 Aug 08-21: Sailed Liverpool-Hamburg-Liverpool.
 Nov 09: Arrived Liverpool from Hamburg with 103 bales of cotton.
 Dec 09: Arrived Hamburg from Liverpool.

1913

Jan 08: Arrived Liverpool from Hamburg
 Mar 05: Arrived Liverpool from Hamburg with 447 bales of cotton.
 Apr 19: Arrived Liverpool from Hamburg with 20 bales of cotton.
 May 20: Arrived Liverpool from Hamburg with 443 bales of cotton.
 Jun 06: Arrived Liverpool from Hamburg with 232 bales of cotton.
 Jun 25: Arrived Liverpool from Hamburg with 367 bales of cotton.
 Jul 31: Arrived Liverpool from Hamburg with 36 bales of cotton.
 Aug 15: Arrived Liverpool from Hamburg with 20 bales of cotton.
 Sep 24: Arrived Liverpool from Hamburg with 60 bales of cotton.
 Oct 15: Arrived Liverpool from Hamburg with 175 bales of cotton.

1914

Jan 04: Arrived Liverpool from Hamburg.

Jan 08-24: Sailed Liverpool-Hamburg-Liverpool.
 Feb 17: Arrived Liverpool from Hamburg.
 Feb 20-Mar 07: Sailed Liverpool-Hamburg-Liverpool.
 Mar 29: Arrived Liverpool from Hamburg.
 Apr 03-22: Sailed Liverpool-Hamburg-Liverpool, 551 bales of cotton
 May 16: Arrived Liverpool from Hamburg with 12 bales of cotton.
 May 21-Jun 03: Sailed Liverpool-Hamburg-Liverpool.
 Jun 10-Jun 25: Sailed Liverpool-Hamburg-Liverpool.
 Jun 27-Jul 12: Sailed Liverpool-Hamburg-Liverpool.
 Jul 17- Aug 02: Sailed Liverpool-Hamburg-Liverpool.

1915

Jan 04: Arrived Liverpool from Rouen France.
 Jan 25: Arrived Liverpool from Bordeaux France.
 Feb 03: Arrived Bordeaux France from Liverpool.
 Mar 31: Sailed Liverpool for Bordeaux France.
 Apr 13: Passed Peniche Portugal.
 Apr 28: Passed Tarifa Spain.
 Jul 12: Passed Gibraltar.
 Aug 25: Sailed Havre France for Gothenburg Sweden.
 Sep 16: Arrived Shields from Archangel Russia.

1916

Feb 01: Passed Gibraltar.
 Feb 04: Sailed London for Cardiff.
 Feb 28: Passed Lizard Cornwall.
 Mar 26: Arrived Glasgow.
 May 10-16: Sailed London from Rouen for Cardiff.

1917

Feb 14: Sailed Fleetwood Lancashire for Cherbourg France with government supplies.
 Attacked and sunk by U-boat UC-65.

N.B: the above voyages and incidences recorded were taken from achieved British Newspapers predominately the daily Lloyd's Listing. From 1911 onwards the Lloyd's Listing is missing a number of years and reports have been taken from local Liverpool newspapers.

Table 3: UC-65 (U-boat) Specification and History

Vessel	Name/s	UC-65
	Type	UC 11 submarine
Built	Date	Ordered: Jan 12 th 1916
		Launched: July 8 th 1916
		Delivered: Nov 7 th 1916
		Cost: N/A
	Material	Steel
	Builder	Blohm & Voss, Hamburg; Yard #281
	Owner	Imperial German Navy – Kaiserliche Marine
Dimensions	Length	50.35 m
	Beam	5.22 m
	Draught	3.63 m
Tonnage	Gross	427t (surface); 508t (submerged)
Propulsion	Type	2 x propeller shafts
Engine	Details	2x6 cyl, 4-stroke diesel, 600PS 400 kW; 590 shp 2 Siemens-Schuckert electric motors, 620 PS 460 kW; 610 shp HP: 500
	Speed	12 knts (surface); 7.4 knts (submerged)
	Range	10,420 nat miles at 7 knts surface; 52 nat miles at 4 knts submerged
	Depth	50m
Armaments		6 × 100 cm (39.4 in) mine tubes 18 × UC 200 mines 3 × 50 cm (19.7 in) torpedo tubes (2 bow/external; one stern) 7 × torpedoes 1 × 8.8 cm (3.5 in) Uk L/30 deck gun
Operations	Captains	Kptlt. Otto Steinbrinck, 10 November 1916 – 31 July 1917 Kptlt. Max Viebeg, 1 August – 3 September 1917 Kptlt. Claus Lafrenz, 4 September – 3 November 1917
	Crew	27
	Patrols	11
	Sinkings/ Damaged	105 merchant ships sunk 116,218 grt 11 merchant ships damaged 64,712 grt 1 warship sunk 11,000 grt 1 warship damaged 850 grt
Wrecking	Date	3/11/1917
	Location	50°31'N 00°27'E.
	Cause	Torpedoed by HM SubC15
	Loss of life	22 dead and 5 survivors
	Outcome	Wreck. UC-65 lies at a maximum depth of 50m

- On 1 February 1917 Germany declared a renewal of 'unrestricted submarine warfare' in a last ferocious attempt to force an end to the First World War.
- Almost immediately, major losses of merchant ships occurred in Welsh waters. Thirteen ships were sunk off Bardsey Island and the Pembrokeshire coast in that month alone – all by the U-boat, UC-65, captained by Otto Steinbrinck, one of the most successful German U-boat commanders of the war.
- UC-65 also patrolled in the North Sea, and coast of France. On Nov 3 1917, at 16h45, HM Sub C-15 (Appendix J, K) fired two torpedoes and obtained one hit on the stern of UC-65, which sank immediately (Appendix L). Only the five men on the bridge (incl. Commander Lafrenz) survived, the rest of the crew, 22 in total, were killed.

Table 4: C-15 (Submarine) Specification and History

Vessel	Name/s	HMS C15 (Appendix C, D)
	Type	C-class submarine
Built	Date	Laid Down: Dec 7 th 1906
		Launched: Jan 21 th 1908
		Delivered: Apr 1 st 1908
		Cost: N/A
	Material	Steel
	Builder	Vickers, Barrow Cumbria
	Owner	British Royal Navy
Dimensions	Length	142 ft 2.5in
	Beam	13 ft 7in
	Draught	11 ft 2in
Tonnage	Gross	287t (surface); 316t (submerged)
Propulsion	Type	1 x electric motor
Engine	Details	1x16 cyl Vickers petrol engine 600 bhp, 450kW 300hp, 220 kW electric
	Speed	12 knts (surface); 7 knts (submerged)
	Range	910 nat miles at 12 knts surface; 52 nat miles at 4 knts submerged
	Depth	100 ft
	Crew	2 x officers, 14 crew
Armaments		2 × 18 in (450 mm) bow torpedo tubes 800 yards @ 26.5 knots, 118 lbs. wet gun-cotton warhead 2 reloads
	Outcome	Scrapped Feb 1922

8.0 Conclusions & Recommendations

The project took approximately 3 working days with 2 day of that time spent on on-line research.

Having read the report, sufficient information has been collated to compile a comprehensive history of the steamship SS Greenland.

The SS Greenland was built for the Liverpool to Hamburg trade route with fortnightly sailings. After the start of WW1 the route was stopped and the SS Greenland sailed between other European ports.

Many different WebPages were viewed ranging from large organisations e.g. Lloyd's Registry Listings to smaller WebPages such as local history or people with a given interest in a subject. The quantity and quality of the WebPages appeared depended on the targeted audiences and the amount of work undertaken. Some of the historical and interest in a subject WebPages were extremely useful. Newspaper archives were also very helpful in giving an overall picture of the operation of the ship and filling in information gaps.

Much of the data collated between websites checked out with some discrepancies observed.

A few WebPages viewed led to pay to view pages. However in most cases the information was obtained from other sources.

From the research conducted, setting a goal and how to reach that goal should be mapped out first. Careful use of specific words in search engines is very important. Due to the name a more specific search through archived newspapers was made using specific newspapers to view e.g. Lloyd's List. This vastly reduced the number of articles but keep the search focused.

9.0 References

9.1 Online WebPages

The following websites and pages have been used in the compilation of this report:

<https://www.britishnewspaperarchive.co.uk/>

Keyword: Greenland

<https://coflein.gov.uk/en/site/274836/details/greenland>

<https://www.crewlist.org.uk/data/vesselsalpha>

<https://www.crewlist.org.uk/data/viewimages?data/viewimages>

http://www.clydeships.co.uk/view.php?official_number=&imo=&builder=&builder_eng=&year_built=&launch_after=&launch_before=&role=&propulsion=&category=&owner=&port=&flag=&disposal=&lost=&ref=1610&vessel=GREENLAND

<https://www.google.co.uk/>

<https://hec.lrfoundation.org.uk/archive-library/casualty-returns>

<https://hec.lrfoundation.org.uk/archive-library/lloyds-register-of-ships-online>

<https://newspapers.library.wales/>

<https://rcahmw.gov.uk/one-hundred-years-ago-today-2/>

<http://www.rhiw.com/>

<https://uboat.net/wwi/>

https://uboat.net/wwi/ships_hit/2607.html

<https://uboat.net/wwi/types/?type=U+63>

<https://uboatproject.wales/>

<https://uboatproject.wales/test-esri-map/>

https://en.wikipedia.org/wiki/HMS_C15

<https://www.wrecksite.eu/wreck.aspx?12232>

https://en.wikipedia.org/wiki/SM_UC-65

9.2 Personal Correspondences

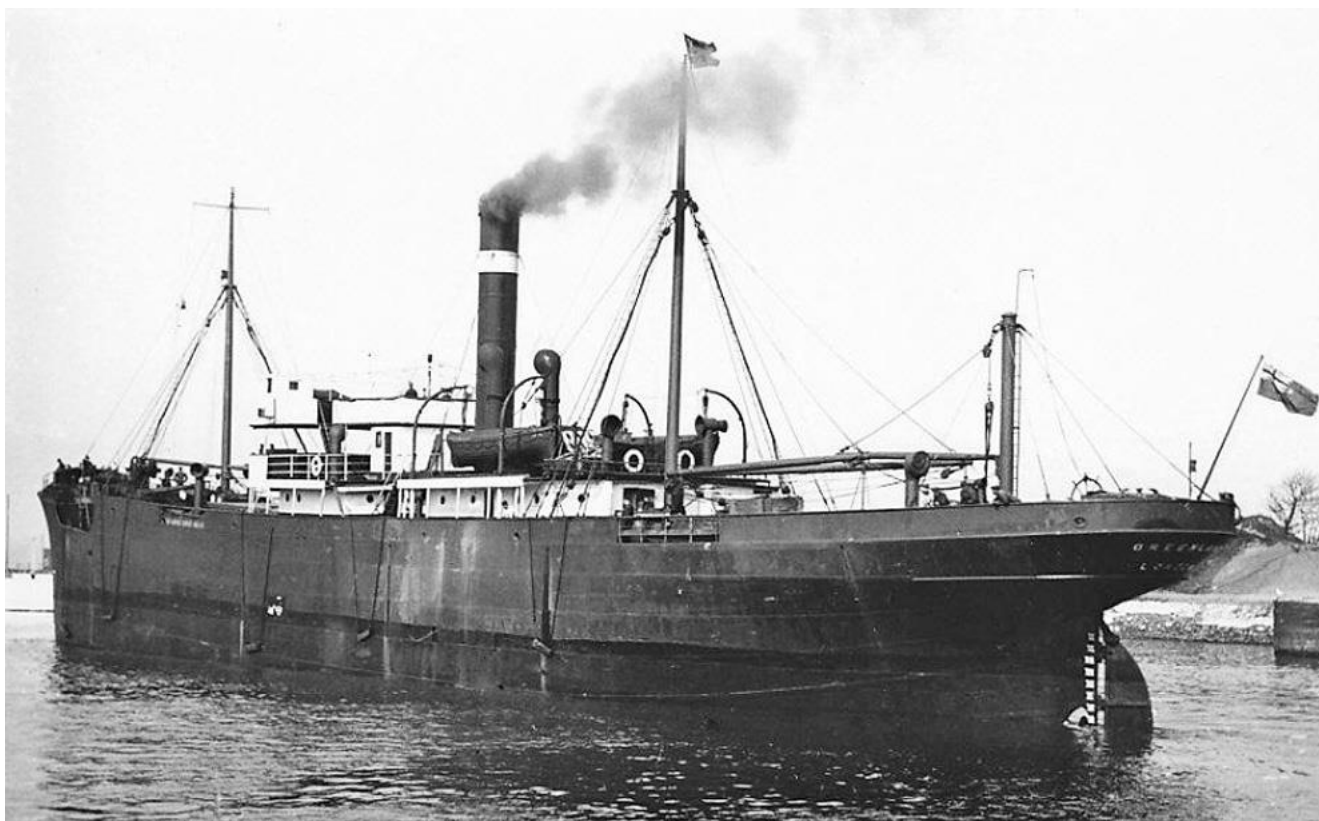
I would like to thank Mr Ian Cundy for supplying the initial information and other information with regards to the research project.

Appendices:

Appendix A: Arrival at Liverpool, November 09 1908

LIVERPOOL AND THE MERSEY.
[FROM OUR OWN CORRESPONDENT.]
21, WATER STREET, LIVERPOOL, Nov. 9.
Messrs. Donald Currie and Co.'s new steamer **Greenland**, of 866 tons net, reached the Mersey a few days ago from the builders. She is intended for the company's Liverpool and Hamburg trade, and is scheduled to make her first sailing on Thursday next.

Appendix B: SS Greenland



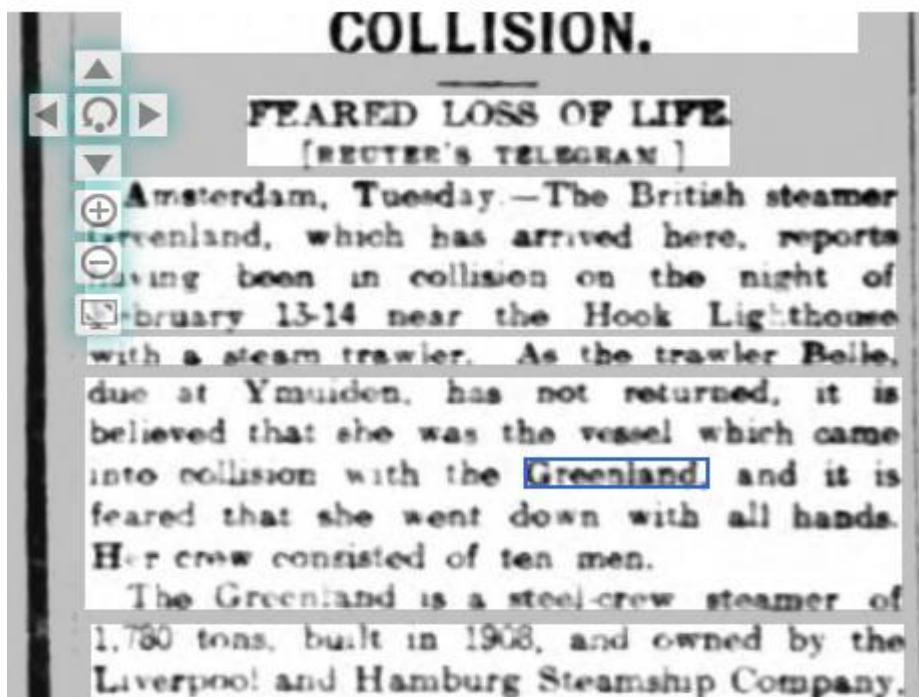
Appendix C: Appropriation Book 1908, SS Greenland

Official Number.	Name of Ship.	Tonnage.	Whether Steam or Sailing.	Port of Registry.	Date of Registry.
2	<i>Wrenbury</i>	84	-	<i>P</i>	62.08 13 ✓ ✓
3	<i>Thesens</i>	4297	-	-	63.08 13 ✓ ✓
4	<i>Lunesdale</i>	76	-	-	65.08 16 ✓ ✓
5	<i>Gorgon</i>	1784	-	-	64.08 15 ✓ ✓
6	<i>Bedouin</i>	2949	-	-	66.08 16 ✓ ✓
7	<i>Elsie Vernon</i>	66	<i>Sailing</i>	-	67.08 16 ✓ ✓
8	<i>Marena</i>	100	<i>Steam</i>	-	68.08 20 ✓ ✓
9	<i>Greenland</i>	866	-	-	71.08 29 ✓ ✓
40	<i>Ayudante</i>	1	-	-	69.08 24 ✓ ✓
1	<i>Ventura de Lavenaga</i>	2970	-	-	70.08 27 ✓ ✓
2	<i>Engineer</i>	3797	-	-	72.08 30 ✓ ✓
3	<i>Eilian</i>	77	-	-	73.08 4 Nov ✓
4	<i>E Hayward</i>	161	-	-	74.08 9 ✓ ✓
5	<i>Davehurst</i>	159	<i>Sailing</i>	-	75.08 10 ✓ ✓
6	<i>Alison</i>	99	<i>Steam</i>	-	76.08 23 ✓ ✓
7	<i>North Western</i>	439	-	-	77.08 7 Dec ✓
8	<i>Gascony</i>	1942	-	-	79.08 9 ✓ ✓
9	<i>Trinails</i>	3199	-	-	78.08 7 ✓ ✓
1995 0	<i>Summersgill</i>	97	-	-	80.08 10 ✓ ✓

Appendix D: Mercantile Navy Listing 1909, SS Greenland

Official No.	Name of Ship.	International Code-Signal (if any).	Port and Year of Registry.	Where Built.	When Built.	Whether Iron, Steel, or Composite.	Dimensions.			Tonnage.		Horse Power of Engines and description of Propeller.	Owner, or Part Owner, and Manager (if recorded). × Signifies Managing Owner. Italics signify Manager.
							Length.	Breadth.	Depth of Hold.	Net Tonnage.	Gross Tonnage.		
80576	Great Western	T.H.V.N	Windsor, Ont., 1882	Windsor, Ont.	1886	Wood	ft. 10m. 220 0	ft. 16m. 40 2	ft. 10m. 15 9	662	1080	700 Pa.	(c) The Grand Trunk Railway of Canada.
115805	Great Western	T.H.V.N	London, 1902	Birkenhead	1902	Steel	275 8	36 3	15 2	364	1339	328 Sc.	Great Western Railway Co., Paddington Station, London. <i>James C. Inglis, same address.</i>
97390	*Greatham	L.Q.R.P	Hartlepool, W., 1890	West Hartlepool	1890	Steel	290 0	38 1	20 3	1501	2338	190 Sc.	Clydesdale Navigation Co., Lim., 14, St. Vincent St., Glasgow. <i>George Nisbet, same address.</i>
102703	Greatham	..	Hartlepool, W., 1893	South Shields	1893	Iron	95 0	19 1	9 8	10	132	75 Pa.	The North Eastern Railway Co., York.
123597	Grebe	H.J.S.W	Grimsby, 1906	Beverley	1906	Steel	130 0	22 5	11 4	108	265	80 Sc.	<i>Arthur E. Bailin, Clarence House, W. Hartlepool.</i>
123282	Grebe	..	Hull, 1906	Goole	1906	Steel	110 2	21 1	11 2	52	172	61 Sc.	× Thomas Baskcomb, Fish Docks, Grimsby. Kelsall Brothers & Beeching, Lim., Hull. <i>George Beeching, 114, Westbourne Avenue, Hull, and John E. A. Kelsall, Dougal House, Love Lane, City, London.</i>
94312	Grebe	K.R.J.N	London, 1887	Dundee	1887	Steel	210 0	30 1	15 0	454	761	120 Sc.	General Steam Navigation Co., Lim., 55, Gt. Tower St., City, London. <i>Chas. H. Cliss, same address.</i>
116382	Grebe	..	Port Arthur, Ont., 1905	Sarnia, Ont.	1904	Wood	38 0	9 0	4 0	6	9	3 Sc.	John Sussel, Port Arthur, Ontario.
105540	Grecian	..	Grimsby, 1896	Hull	1896	Iron	88 5	20 1	10 7	38	119	45 Sc.	× Thomas Robinson, Fish Dock, Grimsby.
110756	Grecian Empire	R.K.V.P	Hull, 1889	Hull	1889	Iron	115 5	21 0	11 2	49	195	63 Sc.	The Cargill Steam Trawling Co., Lim., St. Andrew's Dock, Hull.
96169	Grecian Prince	L.M.V.V	Newcastle, 1890	Sunderland	1889	Steel	292 0	39 1	18 9	1405	2204	200 Sc.	<i>Edward B. Curlytt, same address.</i>
109900	Grecian Prince	..	Shields, North, 1899	South Shields	1899	Steel	96 0	19 1	10 7	20	126	47 Sc.	Princes Line, Lim., Milburn House, Newcastle-on-Tyne. <i>James Knott, same address.</i>
104192	Green Jacket	Q.B.L.F	Cardiff, 1898	Sunderland	1896	Steel	326 0	47 0	21 5	1829	2894	257 Sc.	The Prince Fishing Co., Lim., Fish Quay, North Shields. <i>Richard Irwin, same address.</i>
119864	Greenbank	H.B.V.N	Hartlepool, W., 1906	Sunderland	1905	Steel	352 0	48 1	23 4	2474	3681	307 Sc.	× George Hallett, 98, Butte St., Cardiff. The Horsley Line, Lim., Scandinavian Chambers, Surtees St., West Hartlepool. <i>Matthew H. Horsley, same address.</i>
125447	Greenbatt	H.N.J.W	Newcastle, 1906	Sunderland	1908	Steel	240 0	36 0	15 8	842	1407	181 Sc.	The Newbiggin Steam Shipping Co., Lim., 1, Gill's Buildings, Quayside, Newcastle-on-Tyne. <i>Edward B. Newbiggin, same address.</i>
102707	Greenbrier	N.G.B.C	Hartlepool, W., 1893	Hartlepool	1893	Steel	345 0	41 2	26 1	2139	3332	412 Sc.	Elders & Fyffes, 9-12, Bow St., Covent Garden, London.
79598	Greencastle	L.S.Q.K	Penzance, 1899	Granton	1884	Wood	90 0	18 1	9 1	32	83	30 Sc.	× James Owens, The Hollies, Liscard Road, Eremont, Cheshire.
86643	†Greendyke	H.C.Q.V	Glasgow, 1905	Sunderland	1883	Iron	259 8	36 0	18 6	971	1572	167 Sc.	<i>Austrie Currie & John Macmartin Currie, same address.</i>
73421	‡Greenfinch	..	Liverpool, 1898	Hayle, Cornwall	1877	Iron	61 6	13 5	6 8	22	32	15 Sc.	W. J. Tillett Steamship Co., Lim., 20, Mount Stuart Square, Cardiff. <i>Walter J. Tillett, same address.</i>
115368	llGreenhill	T.G.F.W	Cardiff, 1902	Middlesbrough	1901	Steel	272 5	40 0	18 1	1295	1900	191 Sc.	× Chas. McFerran Legg, Currickfergus, co. Antrim.
113506	Greenisland	S.G.J.R	Belfast, 1906	Tron	1901	Steel	145 3	22 1	9 1	79	282	58 Sc.	× Sir Donald Currie, 1 & 2, Fenchurch St., City, London.
127939	Greenland	H.N.J.D	Liverpool, 1908	Whiteinch	1908	Steel	260 0	36 0	22 2	866	1753	152 Sc.	<i>Thomas H. Collins, same address.</i>
96688	Greenland	..	London, 1890	Greenwich	1889	Steel	54 9	12 0	6 5	20	29	24 Sc.	Surrey Commercial Dock Co., Lim., 106, Fenchurch St., City, London.
106184	Greenock	..	Grimsby, 1897	Govan	1897	Steel	104 2	21 0	10 7	51	165	45 Sc.	Consolidated Steam Fishing and Ice Co. (Grimsby), Lim., 1, Quality Court, London.
104970	Greenore	..	Dublin, 1903	South Shields	1896	Steel	121 9	22 1	8 1	82	217	70 Pa.	<i>John D. Maraden, Fish Dock, Grimsby.</i> London & North-Western Railway Co., Euston Station, London. <i>W. H. Binney, Holyhead.</i>

Appendix E: Collision with Trawler, Feb 14 1910



Appendix F: Report of near drowning in Liverpool Docks, Aug 03 1910



Appendix G: UC Class Mine laying U-Boat 1917



Appendix H: Reported Sinking of SS Greenland, Feb 14 1917



Appendix I: UC Lloyd's Casualty Listing 1917, SS Greenland

LLOYD'S REGISTER OF SHIPPING.

RETURNS OF VESSELS TOTALLY LOST, CONDEMNED, &C.

1ST JANUARY TO 31ST MARCH, 1917.

List of total losses of Merchant Vessels of 100 tons and upwards between the above dates, of which information was received up to the 20th August, 1917.

11

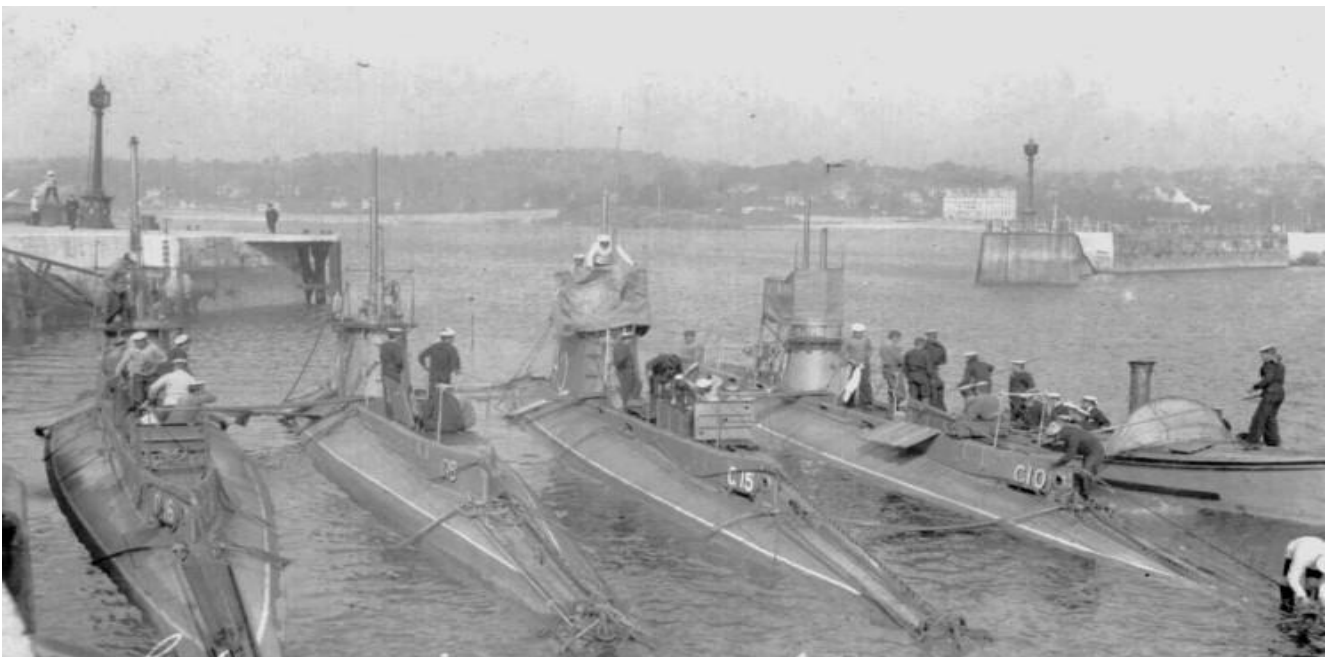
(i.) War Losses—continued.

No. in Reg. Book. 1916-17.	Vessel's Name.	Tons.		Nation- ality.	Descrip- tion.	No. in Reg. Book. 1916-17.	Vessel's Name.	Tons.		Nation- ality.	Descrip- tion.
		Net.	Gross.					Net.	Gross.		
5	F. D. Lambert.....	1321	2195	U.K.	Stl. Sc.	552	Ivernia	916 5	14278	U.K.	Stl. Tw. Sc.
37	Fairearn	261	592	U.K.	Stl. Sc.	70	Jacamar	128	293	U.K.	Stl. Sc.
2 Sup.	Falcon	1332	2243	U.K.	Stl. Sc.	71	Jacatra	3425	5373	U.K.	Stl. Sc.
176	Fenai Lodge	2075	3223	U.K.	Stl. Sc.	160	Japanese Prince	3079	4876	U.K.	Stl. Sc.
26 Sup.	Ferga	315	791	U.K.	Stl. Sc.	267	Jevington.....	1739	2747	U.K.	Stl. Sc.
362	Floridian	2997	4777	U.K.	Stl. Sc.	364	John Miles	342	687	U.K.	Stl. Sc.
24 Sup.	Folia	4211	6705	U.K.	Stl. Tw. Sc.	439	Joshua Nicholson	1196	1853	U.K.	I Sc.
432	Foreland	1134	1960	U.K.	Stl. Sc.	265	Katherine	1891	2926	U.K.	Stl. Sc.
634	French Prince.....	3129	4766	U.K.	Stl. Sc.	273	Kathleen Lily	317	521	U.K.	W. Sc.
680	Frimaire	1119	1778	U.K.	Stl. Sc.	337	Kelvinhead	1946	3063	U.K.	Stl. Sc.
682	Frinton	2707	4194	U.K.	Stl. Sc.	397	Kestrel	74	181	U.K.	I. Sc.
710	Frolic.....	79	183	U.K.	I. Sc.	485	Kincardine	2568	4108	U.K.	Stl. Sc.
73 Sup.	Gafsa	2462	3974	U.K.	Stl. Sc.	491	King Alfred	66	159	U.K.	Stl. Sc.
53	Galatia	63	150	U.K.	I. Sc.	986	Kyamite	224	564	U.K.	Stl. Sc.
114	Garfield	2442	3838	U.K.	Stl. Sc.	107	Laconia	11226	8099	U.K.	Stl. Tw. Sc.
255	Geo. E. Benson	60	155	U.K.	Stl. Sc.	113	Lady Ann	630	1016	U.K.	I. Sc.
296	Georgian	3318	5088	U.K.	Stl. Sc.	149	Lady Olive	296	701	U.K.	Stl. Sc.
362	Ghazee	3220	5084	U.K.	Stl. Sc.	303	Laurentic.....	9255	14892	U.K.	Stl. Trp. Sc.
437	Gladys	106	275	U.K.	Stl. Sc.	364	Ledbury.....	1951	3046	U.K.	Stl. Sc.
439	Gladys Royle	1983	3268	U.K.	Stl. Sc.	448	Lesbian	1625	2655	U.K.	Stl. Sc.
520	Glenogle	4857	7682	U.K.	Stl. Sc.	—	Leven.....	367	775	U.K.	I. & Stl. Sc.
564	Glynymel	714	1394	U.K.	Stl. Sc.	586	Lincolnshire	2567	3965	U.K.	Stl. Sc.
679	Governor	3493	5524	U.K.	Stl. Sc.	854	Lonclara (ex Port of London Authority Hopper No 20)	494	1294	U.K.	Stl. Sc.
760	Gravina	750	1242	U.K.	I. Sc.	776	Longhirst.....	1953	3053	U.K.	Stl. Sc.
790	Greenland.....	866	1753	U.K.	Stl. Sc.	779	Longscar	1773	2777	U.K.	Stl. Sc.
811	Grenadier	591	1004	U.K.	Stl. Sc.	780	Longset.....	147	275	U.K.	Stl. Sc.
831	Greypoint	582	894	U.K.	I. Sc.	805	Lord Collingwood	61	148	U.K.	I. Sc.

Appendix J: C-15 at Sea



Appendix K: C Class British Submarines



From left to right; HMS C-16, HMS C-18, HMS C-15 and HMS C-10 at Torquay, England.

Appendix L: Location of UC-65 Wreckage, English Channel

