

Welsh Wreck Web Research Project
(North Cardigan Bay)
On-line research into the wreck of the:
Jane & Ellen of Nevin



Painting of Jane and Ellen

Report compiled by:

Graeme Perks

Report Title:

**Welsh Wreck Web Research Project
(North Cardigan Bay)
On-line research into the wreck of the:
*Jane & Ellen of Nevin***

Compiled by:

Graeme Perks
graperks@aol.com
Sutton Coldfield
UK

On behalf of:

Nautical Archaeology Society
Fort Cumberland
Fort Cumberland Road
Portsmouth
PO4 9LD
Tel: +44 (0)23 9281 8419
E-mail: nas@nauticalarchaeologysociety.org
Web Site: www.nauticalarchaeologysociety.org

Managed by:

Malvern Archaeological Diving Unit
17 Hornyold Road
Malvern
Worcestershire
WR14 1QQ
Tel: +44 (0)1684 574774
E-mail: MADUdiving@gmail.com
Web Site: www.madu.org.uk

Date:

April 2020

Report Ref:

Leave blank

1.0 Abstract

The "www Research Project" is about, discovering by on line research details of ships, on the MADU data base of wrecks of North Wales, the circumstances of their loss, details of the owners and crew, the cargo carried and their history.

The Jane and Ellen was a wooden schooner of 81 tons built by Richard Davies of Nevin in 1839 for William Parry and others, registered at Beaumaris. Jane and Ellen operated as a coaster travelling to Ireland, London and other English, Scottish and French ports. Jane and Ellen was taken over by David Parry after his fathers death and operated by his wife after his death. In November 1877 the crew were rescued by the Abersoch lifeboat after Jane and Ellen's anchor had parted, before she was driven ashore. Jane and Ellen was recovered and continued trading, but she was sold in about 1882 to John Jones a diver of Bangor.

The Jane and Ellen was then used as a vessel supporting commercial diving and after John Jones death in 1885 sold as a hulk with fittings.

2.0 Index

2.1 Table of Contents	Page No.
1.0 Abstract -----	3
2.0 Index -----	4
2.1 Table of Contents	4
2.3 List of Pictures	5
2.4 Contributors	5
2.5 Abbreviations	6
3.0 Introduction -----	6
4.0 Background -----	7
5.0 Research Methodology -----	9
6.0 Results -----	10
7.0 Analysis -----	22
8.0 Conclusions & Recommendations -----	24
9.0 References -----	25
Appendices:	
Appendix A – LR entries for Jane and Ellen -----	26
Appendix B – Time Line for Jane and Ellen -----	29
Appendix C – Port Locations -----	55
Appendix D - Lloyds survey report for Repairs -----	57
Appendix E - Cargo descriptions and Measures used -----	60
Appendix F - Mercantile Navy List entries Jane and Ellen -----	64

2.3 List of Pictures

Page No.

Front Cover: Painting of Jane and Ellen -----	1
Fig. 1 Boat Building on Nevin Beech -----	11
Fig. 2 Photograph of Captain William Parry -----	18
Fig. 3 Porthdinllaen -----	54
Fig. 4 Measures used for dry and wet goods -----	60
Fig. 5 Map of Ireland showing Ports -----	61
Fig. 6 Map of Wales showing Ports -----	62
Fig. 7 Map of United Kingdom showing Ports -----	63
Fig. 8 Map of Europe showing Ports -----	65

2.4 Contributors

Madu

Rhiu. com

2.5 Abbreviations

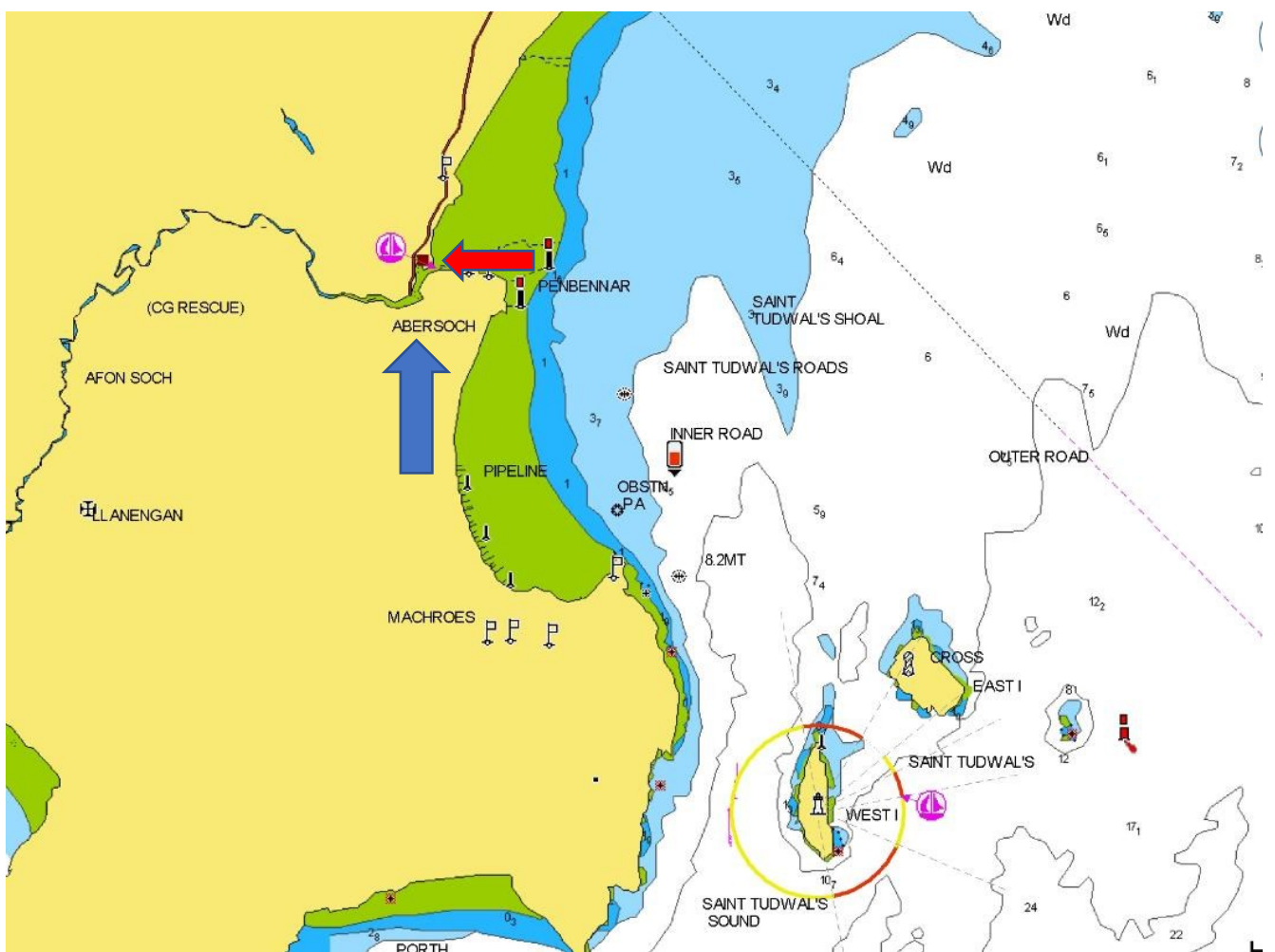
LR	Lloyds Register of shipping
MADU	Malvern Archaeological Diving Unit
MNL	Mercantile Navy List
NAS	Nautical Archaeology Society
NAW	National Archives of Wales
NPRN	National Primary Resource Number
OS	Ordnance Survey
RCAHMW	Royal Commission on the Ancient & Historical Monuments of Wales
RNLI	Royal National Lifeboat Institution
w/e	weekending

3.0 Introduction

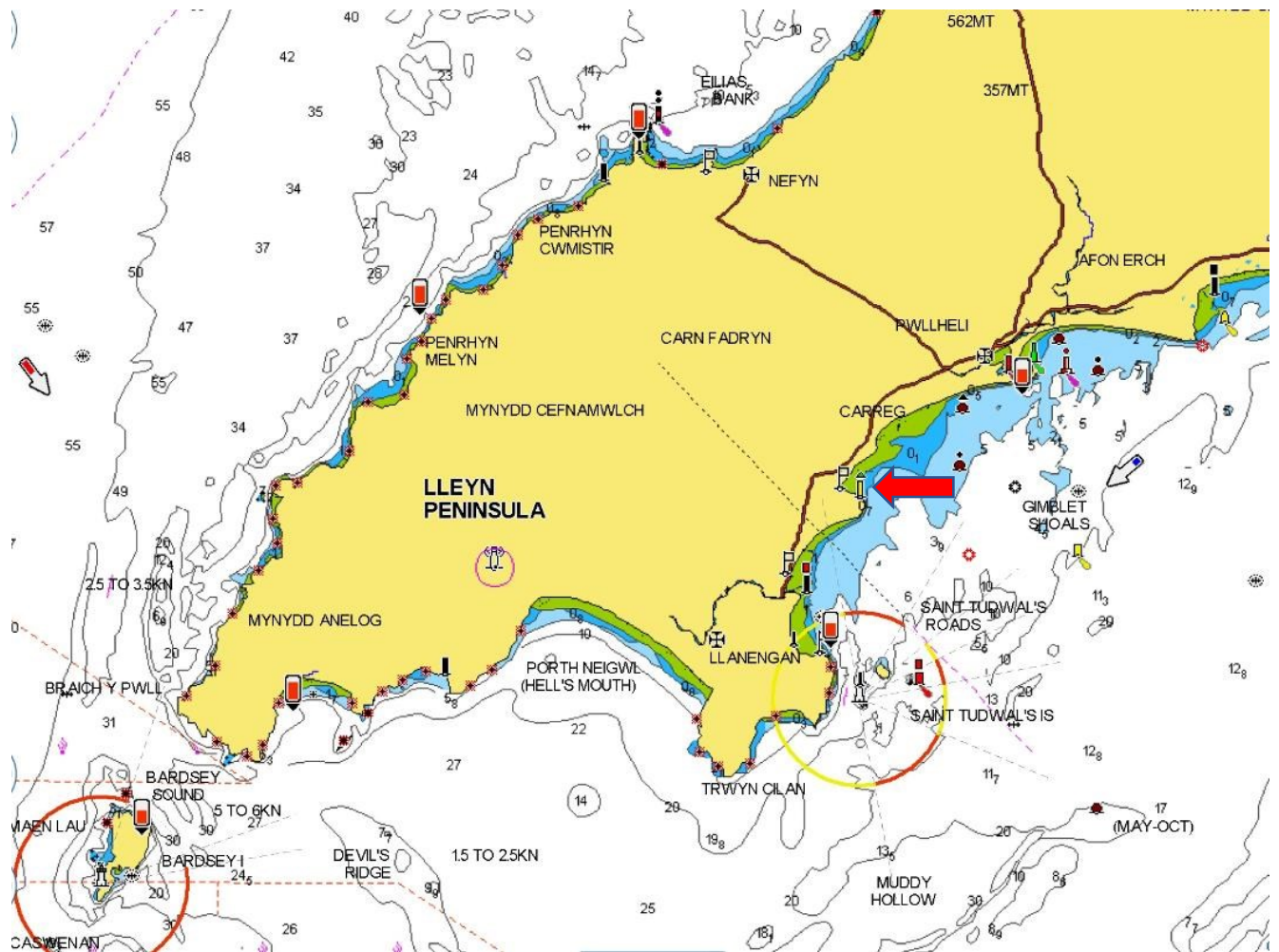
- 1.0 I selected Jane and Ellen to research because I had seen details about her on a previous vessel I was researching and I wanted to find out what happened and I wanted to discover:
- 2.0 The dimensions of the vessel. Who the builder was and when she was built and any other information available about her.
- 3.0 Information concerning the voyages, cargo's, any events affecting the vessel, details of its masters, crew and owners.
- 4.0 To find out the sequency of events leading up to the loss of the vessel, whenever that was and the event in 1877.
- 5.0 To discover the cause of the event in 1877 and if the vessel survived, the cause of its eventual loss or fate.
- 6.0 The events that happened after the incident in 1877 and up to and after its loss if it survived.
- 7.0 If there was any previous research of the vessel for the 1877 incident and its story.
- 8.0 If there was a wreck site for Jane and Ellen and if it had been identified, dived and recorded.
- 9.0 If any salvage of the vessel and its cargo had been carried out
- 10.0 If any previous reports had been produced for the Jane and Ellen.

4.0 Background

When I started this project I knew that Jane and Ellen was a schooner that was reported to be wrecked at Abersoch on 11th November 1877 and her home port was Bangor.



Abersoch and approaches
➔ Approximate position Jane and Ellen went ashore



Abersoch and Lleyn Peninsular
➔ Abersoch

5.0 Research Methodology

I used a Microsoft Pixel laptop with access to my home internet running windows 10 operating system. I also used my Apple I pad for research when I was away from the laptop and to assist in transcribing reports from the British newspaper archives. The new internet provider has now connected my home by a fibre connection so it is very much faster. The Lap top uses bling search engine but I also use Goggle which produces less advertisements and less Americanised content.

I searched Lloyds Register of Shipping (LR) for "Jane and Ellen" looking for details of her dimensions, master, builders and owners from 1839 with a match in 1840. I then searched yearly until 1877.

I searched LR ships, plans and survey reports for "Jane and Ellen" with a match.

I searched the Crewlist Project for " Jane and Ellen" looking for her official number and links to MNL, appropriation book, crew lists, owner and master with a match. I followed the links for crew lists and found matches.

I searched The British Newspaper Archives (BNA) for "Jane and Ellen", "Ellen Parry" and "Ellen Jones" looking for sailings, arrivals, a launch, owners, builders, mishaps and any details of her loss and found a number of matches. I searched "Ellen Parry" because the "and" produces matches for every "and" found and "Jane" is often corrupted or shortened to "J." I changed to searching "Jane Ellen" when Jones was the new master because it produced hundreds of possible matches, even though "Jane" was corrupted from June by the system. I used the advanced search but it was eliminating matches that I wanted, so I looked at the first 10 to 15 pages without it, then used it to eliminate " drunk Miss daughter wife complainant dam " This aimed to remove matches for "marriages, births, deaths, legal cases and horse racing" with the names Jane and Ellen. I also searched "Jones Diver" and found matches.

I searched Welsh newspapers on line for "Jane and Ellen" looking for sailings, arrivals, a launch, owners, builders and any details of her loss and found a number of matches. I also searched "John Jones diver" and "Richard Davies" with no matches.

I searched Coflein site for "Jane and Ellen" looking for any details of the wreck and a chart with no match.

I searched wreckeu site for "Jane and Ellen" looking for any details of the wreck with no matches.

I searched on google for "Jane and Ellen of Carnarvon" and found matches

I searched on google for "Richard Davies shipbuilder" with no matches and "Ship building Nevin" with a match listing all the vessels and their builders until 1880.

6.0 Results

Vessel	Name/s	Jane & Ellen		
	Type	Schooner		
		Cargo		
Built	Date	1839		
		Launched June 1839		
	Builder	Richard Davies		
		Nevin		
Construction	Materials	Wood		
	Decks	One		
	Bulkheads	None		
Propulsion	Type	Sail,		
	Details	Fore and aft rigged		
Engine	Details	N/A		
	Boilers			
Drive	Type			
	Number			
Dimensions	Length	58 ft	0 ins	
	Beam	18 ft	1 ins	
	Draught	10 ft	6 ins	
Tonnage	Gross	80		
	Net			
Owner	First	Parry & Co		
		Nevin		
	Last	John Jones		
		Bangor		
	Others	D Parry, Nevin		
Registry	Port	Beaumaris , Carnarvon		
	Flag	British		
	Number	631		
History	Routes	Wales to Ireland, Scotland, England and France		
	Cargo	Coal, setts, potatoes, clay, slates, wheat, railway iron, barley, oats		
Final Voyage	From	Llanaelhaiarn 9th November 1877 via Portinllaen		
	To	Swansea		
	Captain	Hugh Jones		
	Crew	three		
	Passengers	None		
	Cargo	setts		
Wrecking	Date	11th November 1877		
	Location	Abersoch at the mouth of river Soch		
	Cause	Heavy gale causing anchor to part, dragging the other		
	Loss of life	None		
	Outcome	Driven ashore, refloated and continued trading		

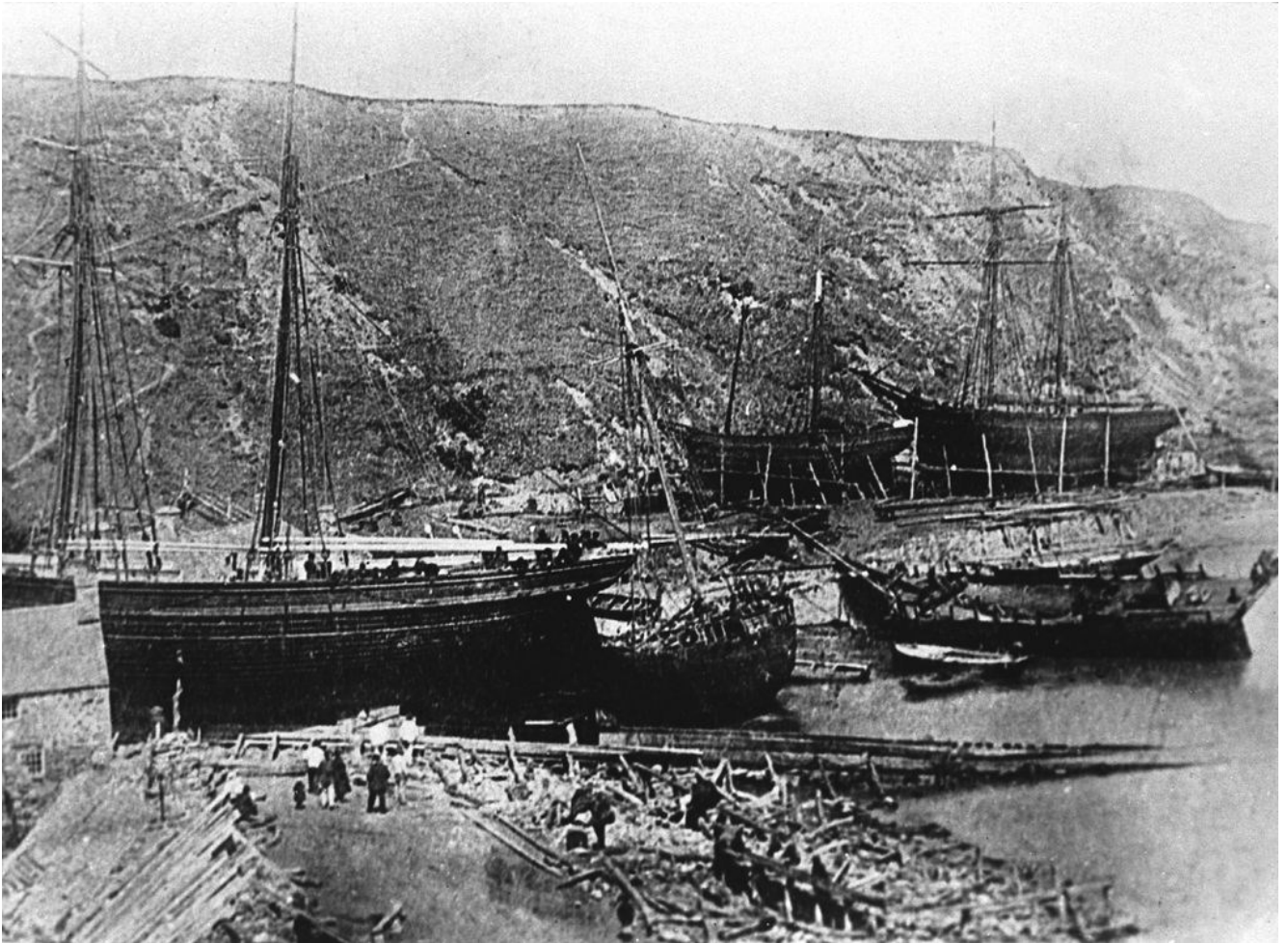


Fig. 1 Boat building on Nevin Beach

Hereford Times - Saturday 26 September 1840

GLOUCESTER. IMPORTS from Sept. 11 Sept. 18, 1840.

From London, the Jane and Ellen, Beaumaris, Parry, 80, with 621 qrs. wheat for Wait and Co.

Monmouthshire Merlin - Saturday 17 October 1840

NEWPORT EXPORTS 6TH TO 13TH October 1840

Jane and Ellen, Parry, for Liverpool, 100 tons of bar and 30 tons of rail iron

The Cambrian 11th December 1841

Milford put in Jane and Ellen, Parry, from Cardiff, for Cork, with loss of jib and main booms, part of bulwarks on starboard side, and split tails.

Shipping and Mercantile Gazette - Saturday 01 October 1842

HOLYHEAD—Sept 27. 28. and 29—Wind E.N.E., strong breeze, and squally.
28— Put in the Swan, Grlffiths, from Pwllheli for Isle of Man. Jane and Ellen, Parry, from Liverpool for Amlwch ; the gates at the entrance of the harbour being closed when she passed, consequence of the strong N.E. breeze

Shipping and Mercantile Gazette - Wednesday 07 December 1842

PWLLHELI—Dec. 5 Wind 8. W, thick, hazy, with rain. Since my last report the wind has been variable, from S. W. thick hazy weather, with drizzling rain. The following vessels are laid up, owing to the low rate of freights the owners being unable to pay wages, and, as the old adage, "keep the pot boiling. The Great Britain. Queen Trumps, Venus, Sarah, Priscilla, Jane, Sisters, Mary. Deborah, Racer, Mary and Elisabeth, Edward, Salem, and John and Ellen—nearly all in first-rate condition, the vessels are, however, on the stocks, In state of forwardness.

North Wales Chronicle - Tuesday 07 December 1847

Porthdyllaen. Coroner's Inquest.—On the 29th ult., an inquest was held before H. H. Hughes, coroner, and a respectable jury, the body of William Jones, (otherwise Wil Sibols) who died very suddenly board the schooner Jane & Ellen. The deceased died in a fit of appoplexy.

Shipping and Mercantile Gazette - Wednesday 08 December 1847

PORTINLLAEN—Dec. : 6—Blowing tremendous to-day from the westward.
7 —N.N.W., a perfect gale.

Remains—The Jane and Ellen, Parry; and Progress, Roberts; both for Bangor. The schooner Memnon. of Cardiff, parted one of her chains and drove the other until she came on the beach.

Bristol Times and Mirror - Saturday 11 May 1850

BRISTOL FOREIGN AND IRISH IMPORTS,

In the Jane & Ellen, Parry, from Yarmouth ; 625 qrs barley.

Gore's Liverpool General Advertiser - Thursday 22 May 1851CARGOS REPORTED AT LIVERPOOL
IRELAND.
Clarence Dock

Jane & Ellen – Parry from Tralee, with 111 tons oats for E Adams and Co.,
Canning Dock.

Kerry Evening Post. - Saturday 06 March 1852

PORT NEWS

Arrived at Ballykissane quay, Killorgan, the Jane and Ellen William Parry master,
direct from Bangor, with cargo of slate for William Conel, Killarney

Rhiu. Com

On June 11th, 1853 whilst the Jane and Ellen was in Poole, Dorset her Captain
William Parry fell between the vessel and the dock side. He was buried at
Longfleet but there is a memorial to him in Fynwent Newydd, Nefyn.

Poole & Dorset Herald - Thursday 10 March 1853

RECOVERY OF BODY OF A PERSON DROWNED • A month since.—The body of Mr.
William Parry, master of the schooner Jane and Ellen of Pwllheli, who it is
supposed fell into the water when attempting to get on board his vessel, on the
night of Friday, the 14th ult., was found yesterday (Wednesday) morning by a
fisherman named William Cane, who was dragging for old rope or anything that
he could find, in front of the quay. near the spot when the deceased is supposed
to have fallen overboard. There was a stain from a bruise on the nose and one
eye, which was doubtless caused by a blow received on his falling against the
side of the vessel. Money in notes, gold, silver and copper, were found on the
body to about the amount the deceased was suggested to have had in his
possession at the time he was missed. An inquest was held on the body in the
afternoon, before Mr H. M. Aldridge, Esq., coroner, for the borough, and a
respectable Jury, when a verdict of "found drowned" was returned.

Shipping and Mercantile Gazette - Friday 06 January 1854

BANGOR- Jan. 3 : S.S.E., a heavy gale, with snow drifts. The following are wind bound off Garth Point;—The Rival, Thomas, from London; Jane and Ellen, Parry, from Poole; both for Runcorn.

Shipping and Mercantile Gazette - Thursday 06 April 1854

PORTHDINLLAEN—April 4: All the windbound sailed yesterday, with fine breeze from N.E., and among them were the Ardent, Jones, for London ; John, Newport; and Jane and Ellen, Parry, for Bristol.

Shipping and Mercantile Gazette - Friday 15 December 1854

ABERSOCH Dec.14 : S W Strong
Put into St Tudwall's roads Jane and Ellen, Parry from Chichester for Larne

Shipping and Mercantile Gazette - Wednesday 09 July 1856

PORTHDINLLAEN – July 8 : At 1.0 pm yesterday the wind chopped round to the NNW and blew a tremendous gale which lasted until 8.0 o'clock this day. There were a great many vessels in the bay at the time; among them was Jane and Ellen, Parry and a smack name unknown and they rode out the gale well. Four other vessels were driven onto the beach but expected to get off without damage. The Three Brothers, Jones and Diligent, Evans are likely to go to pieces.

Lloyd's List - Wednesday 24 September 1856

POOLE. 22nd Sept.
The JANE ELLEN, Parry, from Newhaven to Runcorn, has put in here with mainmast sprung, and will have to discharge part of cargo to replace it.

Lloyd's List - Tuesday 30 October 1866

PORTSMOUTH WNW to W arrived 29 Jane and Ellen, Parry Bangor for London with loss of bowsprit, having been in collision on the 28th, 4.15 p.m., off the Needles, with a schooner belonging to Ipswich, bound to Plymouth

Lloyd's List - Tuesday 06 November 1866

Portsmouth Nov. 5 sailed Jane & Ellen, Parry London after repairing

Galway Vindicator, and Connaught Advertiser - Saturday 18 December 1869

Per Schooner "Jane Ellen" from Bangor
140 tons best ton slates

Which with their usual large Stock of Building Materials, English and Scotch Irons, Steel and castings they will prepared to Sell their friends and the trade in these articles, lowest Market prices.

MURRAY & Co..

STORE AND YARD- MERCHANTS ROAD, and St. AUGUSTINE STREET. Galway,
15th December, 1869

Shipping and Mercantile Gazette - Saturday 06 July 1872

PORTINLLAEN— July 5 : The Jane and Ellen, Parry .which put in yesterday leaky, has stopped it.

Lloyd's List – Saturday 06 July 1872

PORTINLLAEN— July 4 : The Jane & Ellen (schr.), Parry, from Bangor to Southampton, has come to the pier to find a leak.

Lloyd's List - Friday 08 September 1876

ABSTRACT OF BOARD OF TRADE CASUALTY RETURNS-

26th Aug., Jane & Ellen, of Carnarvon. Llanhairn to Garston, leaky

The Cambrian News and Merionethshire Standard 16th November 1877

ABERSOCH. A SHIP IN DISTRESS.—About three p.m. on Sunday, the 11th Nov., the schooner Jane Ellen, Nevin, bound from Llanaelhaiarn to Swansea with setts was observed to be in distress. The Abersoch lifeboat went out, and brought the crew safe to land. The vessel dragged both her anchors and went ashore near the mouth of the river Soch.

Manchester Courier and Lancashire General Advertiser - Wednesday 14 November 1877

THE LATE HEAVY GALE. SERVICES ONE THE MANCHESTER LIFEBOATS.
November 13. During the recent heavy gale the schooner Jane an Ellen, of Nefyn, being in distress, the Mabel Louisa lifeboat (presented to the National Lifeboat Institution, through its Manchester branch, the late Mr. Barnes) immediately proceeded to her assistance, and succeeded in rescuing the crew, three in Number. During the late storms the lifeboats the National Lifeboat Institution have been instrumental altogether in saving about 70 lives from different shipwrecks on our coast.

THE LIFE-BOAT FEBRUARY 1, 1878.

ABERSOCH.—On the 11th November, at about 3 P.M., the schooner Jane and Ellen, of Nefyn, which had parted from her anchors, was observed to show a signal of distress, having struck on a bank at the mouth of the river Soch, during a heavy gale from W.S.W. The crew of the Mabel Louisa Life-boat were summoned and the boat was launched, and succeeded in bringing the vessel's crew, consisting of 3 men, safely ashore.

Y Genedl Gymreig 18th April 1878

AR WERTH, drwy gytundeb cyfrinai, T A Schooner, "JANE & ELLEN," 78 Tons Register, a adeiladwyd yn 1839; yn bresenol yn llwytho yn Mangor. — Am fanylion veliwaiegol ymfyner a Mrs Mary Parry, Jane & Ellen, Nevin.

FOR SALE, by private agreement, T A Schooner, "JANE & ELLEN," 78 Tons Register, built 1839; is currently loading in Bangor. - For further information ask Mrs Mary Parry, Jane & Ellen, Nevin.

Lloyd's List - Wednesday 02 October 1878

Portdinllaen 30th Sept. – JANE and ELLEN, Jones put back here with mainsail, main boom and gallant rail carried away.

The North Wales Express 27th February 1885

DEATHS

JONES - On the 23rd inst., at 28, Ambrose-street, Hiracl, Bangor, Capt. John Jones (Diver), aged 70 years; and on the 24th. Catherine, wife of the above, aged 28 years (of childbirth).

DISTRESSING OCCURRENCE AT BANGOR.—On Monday last, Captain John Jones, diver, Ambrose-street, Hiracl, died at his residence. On the following evening his wife also died of childbirth—the child also dying—leaving three dead bodies in the house. Four children are left behind to mourn their loss.

The North Wales Express 27th March 1885

Sales by Mr. JOHN PRITCHARD.

HIRAEL, BANGOR.

TO DIVERS. SHIP CARPENTERS, MARINE STORE DEALERS, PARTIES FURNISHING, AND OTHERS.

MR JOHN PRITCHARD has been instructed by the administrator of the late John Jones, deceased, diver, to SELL BY PUBLIC AUCTION, on the premises, 28, AMBROSE STREET, HIRAEL, BANGOR, Wednesday, April 1st, 1885, commencing at 12.30 noon prompt, the whole of the serviceable Household Furniture, together with the Diving Apparatus, all in good order, including Dress, Helmet, India Rubber Piping, Air Pump, &c., complete, Patent Log, Telescopes. The Hulk of the 'Jane Ellen,' as she now lies at the Old Baths, Bangor; Chains, Cables, Anchor, Wood and Iron Blocks, Shackles, Brass Bells, Old Iron, an excellent Boat, &c. Bodhyfryd, Bangor.



Fig. 2 Captain William Parry

Owners of Jane & Ellen

William Parry– Mariner – twenty shares.

Hugh Roberts, Shipbuilder – Six shares

John Griffiths, Merchant – Two shares.

Edward Roberts – Farmer – Four shares.

Richard Williams – Blacksmith – Two shares.

All the above of the Parish of Nevin.

Griffith Williams – Farmer.- Four shares

Robert Hughes – Farmer –Two shares

Both of the Parish of Edern.

Owen Griffith Williams - Four

Richard Hughes – Shopkeeper. – Two

Evan Hughes – Two.

All the above of the Parish of Tudweiliog.

Evan Williams – Farmer-Four

Griffith Jones – Farmer - Two

William Thomas – Farmer – Two

Hugh Evans – Farmer – Two.

All the above of the Parish of Penllech.

David Thomas Butcher – Two

Parish of Denio.

Thomas Christian – Sailmaker, Liverpool Four.

Captain William Parry was married to Catherine Griffiths of Plas Mawr, Nefyn, and a member of the well know Griffiths family shipbuilders

William and Catherine Parry lived at Tyn y Maes Nefyn and had three sons, John, William and David all of whom became sea captains. David Parry the youngest took command of the Jane and Ellen. He married Mary Griffiths of Penarfynydd, who was the youngest daughter of Captain Griffith Griffiths Master of the schooner Vine.

Captain David Parry died suddenly in July 1877, aged 43. He left a wife Mary, daughter Ann aged 6 and a son William 18 months, they lived at Fair View, Y Maes, Nefyn. After the sudden death of her husband Mary continued to run the schooner Jane and Ellen and engaged Captain Henry Jones to take command of the vessel. In his book 'Hen Longau Sir Gaernarfon' (Old Ships of

Caernarvonshire) David Thomas mentions that Mary Parry was the only woman to manage a ship on her own at that period in time. Thus from 1877, Mary Parry was the sole owner of the Jane and Ellen. Sometime during 1890, her cargo of slate shifted and she foundered off the coast of Abererch, but she managed to limp back to Portdinorwig, and she was broken up in 1892.

JOHN JONES, DIVER

North Wales Chronicle - Saturday 14 May 1859

BETHESDA. On the 11th inst., an inquest was held at the Douglas Arms Hotel, before Mr. Powell, jun., Deputy Coroner, on the body of Ellis Roberts, weaver, Llenwllechid, who was found the preceding day, in the Coetmor Quarry, which at present is filled with water.

After the Jury were addressed by the Coroner, and had carefully considered the case, they returned the following verdict: "Found dead, but by what means he came to his death is unknown." The deceased was a widower, and has left four orphan children to lament his loss. The generosity and kindness of the Hon. Colonel Pennant on this as well as on all other occasions is worthy of remark—not only in his personal attendance, and making a strict inquiry into the case,—but also in engaging John Jones, a diver from Bangor, to come as early as possible, and search for the body of the deceased.

Cork Examiner - Tuesday 18 February 1862

THE MISSING BARQUE "SWAN." Intelligence has reached Queenstown that Mr. Jones, diver, went down examine a sunken vessel at the mouth of Milford Haven, and, from the appearances of the wreck, it is believed to be the barque Swan, of Queenstown, which left Cardiff nearly three weeks since, laden with coal. No human remains are stated to have been discovered, so there is yet hope that the crew—nearly all Queenstown people—had found safety in some passing ship.

Isle of Man Times - Saturday 04 September 1869

Recovery of a Wreck. — A Lucky Speculation. The circumstances attending the loss of the smack Laurel, and crew, in Ramsey Bay, in February, are no doubt fresh in the minds of our readers. Since that time, she has been lying in about 13 fathoms of water, off Maughold Head, and about three weeks ago, she was purchased, together with her cargo, consisting of about 65 tons of coal, by Messrs Kelly and Quayle, owners of the Naomi and Jane, the diving apparatus connected with which was so usefully employed last year. They immediately took steps to recover the vessel, by means of a new diving apparatus, lately purchased, for use on the Naomi and Jane. They obtained the assistance of J. Jones, diver, of Bangor, who succeeded with the aid of his vessel the Priscilla, of 45 tons burthen, in bringing the vessel into Ramsey harbour, on Saturday last ; the whole work being accomplished a little over a week. The hull was found to be quite water tight ; the main sail was set, thus leaving no doubt as to the conjecture that the vessel was capsized during the storm. The rapidity with which the vessel has been recovered, and the manner with which it was effected, has taken many people by surprise. The affair will, we understand, turn out a very remunerative speculation. The cargo is being sold, and it is expected that the sale of that alone will almost pay the expenses of the recovery, and the price paid for the wreck.

Shipping and Mercantile Gazette - Tuesday 04 July 1882

THOMAS CROWLEY 85 tons that sunk off Dutchman's Bank, Jan. 3, has been lifted and beached at Friars, by John Jones, diver, of Bangor. She was coal laden for Ireland. (Beaumaris. July 3.)

7.0 Analysis

The master of Jane & Ellen was Parry from when she was built until 1876 but William Parry was the first master until he drowned after falling, on boarding the vessel in Poole in February 1853. The new master was his youngest son David who was master until 1876 when Hugh Jones took over as the new master, probably due to ill health as David died in 1877. Mary Parry, David's wife then took over managing the vessel until it was sold after 1878 to John Jones of Bangor who was a commercial diver. He seems to have used the vessel as his dive boat when working as it is no longer reported as arriving or departing ports after 1879. The previous vessel he used was the Priscilla 45 tons, so Jane and Ellen at 80 tons provided more space, stability and power to recover vessels. This would also explain the lack of crew lists as she was no longer operating transporting cargo.

The LR entries for Jane and Ellen ceased in 1852 but restarted in 1854 when she appears in the supplement.

Richard Davies, the builder of Jane and Ellen is recorded as building six vessels between 1839 and 1843 at Nevin, including three in one year on Rhiu.com but I found no other information concerning him.

The Shipping and Mercantile Gazette of December 1842 show the decline that led to many vessels being laid up as the only option to survive financially.

The Surveyors report, Appendix D, in 1864/5 relates to damage on the Port side of Jane and Ellen but the explanation of how it occurred is on another report which has not survived. I searched for a report of damage in newspaper reports with no match.

The frequent visits to Portdinllaen and the destinations the Jane and Ellen sailed to from there suggest it was used to give orders to the master to deliver or collect cargos. I have seen a report of a court case where an owner failed to pay for stores delivered from there, so it looks more than a sheltered anchorage.

The Jane & Ellen was driven ashore but survived on 11th November 1877 and appeared for sale in April 1878, but does not appear to have been sold then. It appears to be the whole of the vessel is for sale not the twenty shares William Parry originally owned in the Jane and Ellen. In MNL 1882 the owner changes to John Jones and the registration finishes in 1887, 1886 is not available on line. The public auction in March 1885 at John Jones 70 home, after his death, included the hulk of the Jane Ellen, not only some faction of shares and his diving equipment. The vessel was by this time 46 years old and a hulk is a vessel without masts, often unfit for sea and at the end of its working life.

The Jane & Ellen was not wrecked in October 1879 after striking rocks in the Menai Straits as I at first thought, this was the 44250 Jane Ellen of Nevin(Caernarvon) 76 tons owned by Owen Jones of Portmadoc. Jane Ellen or Jane and Ellen was a popular name in North Wales at the time with a brigantine also registered at the same port and others at Aberystwith.

The crew lists held by the Gwynedd Archives Service are an area that may produce further information but require a visit as they are not available on line.

The BNA produced the majority of the reports concerning the Jane and Ellen with the WNL most of the remainder. The goggle search finding the report on Rhiu.com which provided the photograph of William Parry, all the information concerning the Parry family and some additional information concerning the Jane & Ellen.

The MNL list in 1876 shows a change of address for D Parry the owner of Jane and Ellen to the address given previously for her father in law William Parry.

The use of divers seem to become common from the 1860's and newspaper reports ceased to give the divers names unless they were involved in the common fatalities.

8.0 Conclusions & Recommendations

I have spent about 55 hours on this project with about 95% of the time being on line searching. The nearly 45 years of her use took the time along with the numbers of vessels with the same name from the same area and searching a vessel with two parts in its name produced hundreds if not thousands of possible matches. The advanced search eliminates matches that are needed but without it the time required would be unreasonable, so I experimented.

The website Rhiu. Com states the Jane and Ellen continued sailing until about 1890 when after its cargo shifted, it limped into Port Dinorwic and was broken up. The entries in the MNL finish in 1886/7 and the crew lists in 1869 which are legal requirements and I cannot find any ship with the names Jane Ellen or Jane and Ellen after these dates in Wales. It may be the vessels name was changed after it was sold in 1885 as a hulk. The same website gives the date of William Parry's death as 11th June 1853 but the newspaper reports when his body was recovered in March 1853 give the date of his disappearance as 14th February 1853. The Shipwrecks of North Wales by Ivor Wynne Jones gives the port of registration for Jane and Ellen as Bangor but although the last recorded owner lived at Bangor the vessel was registered at Beaumaris, then Carnarvon.

The Jane and Ellen was probably broken up at the end of its life, as there is no record of her being wrecked and Rhiu.com states that was her fate. So there is no prospect of diving or discovering her location.

The project has answered most of my objectives except details concerning the builder Richard Davies, the crew and the master Hugh Jones. The crew lists will probable allow further research concerning the crew and Hugh Jones. I found no other research concerning the vessel except the details provided on Rhiu.com and its full explanation of the Parry family's involvement with the vessel.

The story of the Jane and Ellen is fairly routine, although more masters were lost then the vessel had near misses and the information concerning the Parry family has already been published. The fact that Mary Parry managed the vessel is very unusual at this time but the circumstances left her little choice with her husband dead and a very young family. The crew lists may have new information particularly concerning the arrangement with the master to make this a more interesting story. To control a ships master at a distance and make a profit is a difficult undertaking and for a woman with the attitudes prevailing at the time an achievement.

9.0 References

<https://www.britishnewspaperarchive.co.uk/>

<https://www.crewlist.org.uk/>

<https://www.google.co.uk>

<https://hec.lrfoundation.org.uk/>

<https://www.navionics.com/>

<https://newspapers.library.wales/>

<http://www.rhiw.com/>

<https://en.wikipedia.org/>

Jane & Ellen painting by the late Captain John Lewis Jones, Morfa Nefyn.

Appendices:

Appendix A – Table of Lloyd’s Registers entries for the *Jane & Ellen*

1840

2	—	G O Hughes	68	Frdsrn	1816	Davies&C	B'maris	BmsRuncrn	—	Æ 1
		I.B.	66	s T ds	&lrp.	39				39
3	—	Sr R. Shields	47	Nwestl	1816	Shield&C	Nwcast	Nwc.Coastr	—	Æ 1
		I.B.		alm. rb	38					39
4	—	& Barbara S Coleman	389	Bristol	1813	J. Salmon	Bristol	Brs. Quebec	—	Æ 1
		r.&C.36		lrp.36s	n.w.T	Sds& Srprs	39			6
5	—	& Eliza Sr Richards	103	Plhely	1839	Richards	Crnvrn	Bms.Hull	12	A 1
		I.B.			9 mo					39
6	—	& Elizabeth E. Evans	53	Abryst	1815	Capt.&Co	Abstwh	Glr. Abryst.	—	35
		Sr I.B.		lrp.30						
7	—	& Ellen Sr W. Parry	81	Nevin	1839	Parry&Co	B'maris	Bms Boulgn	12	A 1
		I.B.			6 mo					39
8	—	& Frances Weekham		Wexfd	1838	Hughes&	Wexf	Wex.Milfrd	6	A 1
		Sk		ptRP.p	lk	9 mo				38
9	—	& Isabella Hall	211	Sndrld	1840	Elliott&C	Sndrl	Sld. London	7	A 1
		Sw I.	204		1 mo					1
10	—	& Jessie B Campble	130	Whtvn	1839	Campble	Whit	Whn.	12	A 1
			123							39
11	—	& Margaret Gordon	246	Sndrld	1809	Paul & Co	Sndrlnd	Lon.Oporto	—	Æ 1
		Bg I.B.	231	nd.&T	Sds33	Srprs35	Drp 40			3
12	—	Sp G.Harvey	55	Pdst'w	1830	Morcomb	Padst'w	Pad. Newpt	—	34
13	—	Sk Roberts	57	Amlch	1837	Jones & C.	Amlech	Bms. Rncrn	6	A 1
		I.B.			1 mo					37
14	—	& Mary Sp A. Owen	55	Pwlhly	1832	Owen & C.	B'maris	Glr.Glasg'w	10	A 1
		H.Davies	41					Gff.Coaster		34
15	—	Sp WRich'ds	42	Sw'nse	1831	Southan&	Glo'ster	Glr. Coaster	10	A 1
			37	nd.&D	rp. 39					39
16	—	& Sarah Sr Wallis	66	Apldor	1830	N Phillips	Pnznce	Pnz.Swnsea	8	

No. 7 *Jane & Ellen*, schooner, built at Nevin, completed June 1839 with iron bolts, D. Parry master, 81 tons, owners Parry & Co., registered at Beaumaris, survey at Beaumaris in 1839, A1 for 12 years, sailing Beaumaris to Boulogne.

1841, 1842, 1843, 1844 No changes

1845 page missing

1846 new survey at Beaumaris in 1845, no changes

1847, 1848, 1849, 1850 No changes

1851 classification amended to AE1

1852, 1853 No entry

1854 In Supplement

10	Glaister Sr I.B.	J Christian	101	Mrypt 80 <i>O.A.Lh</i>	1846	J. Whelan &P.	Dublin	Npt. France	6	Æ1	7
6	Jason I.B.	Sp R. Mann	65	Leeds	1854	France&C	Goole	Goo. Coaster	10	A	1
7	John Z.54,I.B.	Sr Pickering	118	N.Brns B.&S.	1852	R. Rchrds	Chester	Liv. Tmpico	4	A	1
+	James Russel YM.&ptr.54,c.f.	S D. Muir	773 801	Grnck	1854	Russel&C	Grenck	Cly Bombay	13	A	1
+	James Fernie Sr.&YM.54over	B. Daly ptI.B.	977 1037	StJohn <i>TamBP</i>	1854	Collns, Br O.&S. w.F.&s.54	London	Liv. Austral	6	A	1
10	Joshua & Mary Sw r.&Z.54,ptI.	T. Drew B.	243	Sndrld	1854	Miller&C.	London	Sld. London	8	A	1
21	Jenny Lind I.B.	Sr P. Kearns	63	N. Sco. O.B.S.	1850	HHingl'y Hk & YP. nK154	Liverp'l	Liv. Coaster	4	A	1
+	Joseph Steel YM 54.c.f.	S R Johnson	848 959	Livrpl	1854	J. Steel, jr	Liverp'l	Liv. Calcut.	13	A	1
23	Jane & Ellen I.B.	Sr D. Parry	81	Nevin Srprs54	1839	Parry & Co	Carnrvn	Bng. Coaster Cont.51—	12	A	1
+	John man Sr M.54	Robertson over pt I.B.	1201 1131	StJohn <i>TamS L</i>	1854	Reed & &P.	St. John	Liv. St. John	4	A	1
25	Jessie I.B.	Bn FM Crthy	168	Tatma B.S.&Y	1850	A. Sut P.Spr s54-	Cork	Crk. Coaster S.S.54—4yrs	4	A	1
26	John Bg	ley A. Harley	189	Cork <i>ChsA.O. Lh</i>	1854	Harley &P.	Cork	Crk. Coaster	6	A	1
27	J. Bradshaw pt I.B.	S J. Miles	750 814	N Brns B.&S.	1854	JBrdshaw	St. John	Liv. St. John	4	A	1
28	Joseph Colin I.B.	Sr T. Bolands	111	Wells nd&Srprs54	1837	J Fletcher	Goole	Goo. Coaster	10	Æ1	9

No. 23 Jane & Ellen, schooner, built at Nevin in 1839 with iron bolts, D. Parry master, 81 tons, owners Parry & Co., registered at Caernarvon, new survey at Bangor in August 1854, classified A1, some repairs in 1854, sailing as a Bangor coaster continuing since 1851.

1855 No changes

1856 Classification now AE1, no other changes

1857 Classification, port and sailing area now blank

1858 No entry

1859 In Supplement new survey in August 1859, classified A1, no other changes

1860, 1861, 1862 No changes

1863 Now shows dimensions of vessel, no other changes

1864 Damage repairs 1865, new survey London January 1865, classified A1

1865, 1866 No changes

1867 No changes but stamped expired in red ink

1868 No changes except classification blank

1869, 1870, 1871, 1872 No changes

1873 Tonnage amended to 78 tons, new survey at Bangor August 1873 classified **A1, SS Bangor 1873 for 8 years** (sides opened for survey, repeat in 8 years)

1874 No changes

1875 Tonnage 80 tons again, new survey May 1875 still **A1**,no other changes

1876 no changes

1877 Master amended to H Jones, owner to Mrs M Parry, area half time Bangor, new survey **A1** in January 1878

1878 No changes

1879, 1880, 1881 No Changes

1882 no classification

1883,1884,1885 No Changes

1886 no entry

Appendix B – The Timeline for the *Jane & Ellen***1839**

August 7 1839 Portmadoc arrived Jane Ellen, Parry from Portinllaen

September 2 1839 Portmadoc windbound Jane & Ellen, Parry for Boulogne

October 23 1839 Runcorn arrived Jane Ellen, Parry from Poole

December 31 1839 Falmouth arrived & put in Jane & Ellen, Parry from London

1840

July w/e 30 1840 Bangor sailed Jane Ellen, Parry for London

August w/e 29 1840 Bangor sailed Jane & Ellen, Parry for London

September 11 1840 Cowes arrived Jane & Ellen, Parry from London

September w/e 18 1840 Gloucester arrived Jane & Ellen, Parry from London

October 1 1840 Gloucester arrived Jane & Ellen, Parry from Newport

October w/e 15 1840 Newport sailed Jane & Ellen, Parry for Liverpool

December 23 1840 Carnarvon, Passed through the Menai Straits Jane & Ellen,
- Parry for London from Bangor

1841

January 29 1841 London customs house outwards Jane & Ellen, Parry for
. Liverpool

February 13 1841 Portinllaen put in Jane & Ellen, Parry from London for Liverpool

February 17 1841 Portinllaen sailed Jane & Ellen, Parry

March 10 1841 Port Penrhyn, Bangor arrived Jane & Ellen, Parry from Liverpool

April 6 1841 Port Penrhyn, Bangor sailed Jane & Ellen, Parry for Goole

April 11 1841 Ramsgate put in Jane & Ellen, Parry from Bangor for Goole

April 15 1841 Ramsgate sailed Jane & Ellen, Parry for Goole

April 21 1841 Goole arrived Jane & Ellen, Parry from Bangor

June 24 1841 Runcorn sailed Jane & Ellen, Parry for Liverpool

August 29 1841 Porthdynllaen sailed Jane & Ellen, Parry

October 10 1841 Portland Roads arrived Jane & Ellen, Parry from London

October 24 1841 Falmouth sailed Jane & Ellen, Parry for Bristol

19 November 1841 Glamorganshire Canal arrived Jane & Ellen, Parry from
 . Beaumaris

December 8 1841 Milford put in Jane & Ellen, Parry from Cardiff for Cork-
 . damaged

December 21 1841 Cove of Cork arrived Jane & Ellen, Parry from Cardiff - iron

December 21 1841 Cork arrived Jane & Ellen, Parry from Cardiff - iron

December 31 1841 Deal arrived Jane & Ellen, Parry A B S No.227 of Beaumaris

1842

January 12 1842 Cove of Cork sailed Jane & Ellen, Parry for Cardiff

January 18 1842 Newport arrived Jane & Ellen, Parry from Cork

March 5 1842 Beaumaris passed Jane & Ellen, Parry from Newry for Bangor

March 10 1842 Port Penrhyn, Bangor arrived Jane & Ellen, Parry from Liverpool

August 5 1842 London customs house entered inwards Jane & Ellen, Parry from
 . Cork

September 1 1842 Newhaven arrived Jane & Ellen, Parry from London

September 21 1842 Runcorn arrived Jane & Ellen, Parry from Newhaven

September 25 1842 Runcorn sailed Jane & Ellen, Parry for Liverpool

October 1 1842 Holyhead sailed Jane & Ellen, Parry from Liverpool for Almwch

October 7 1842 Portinllaen passed Jane & Ellen, Parry from Almwch for London

October 12 1842 Falmouth sailed Jane & Ellen, Parry for Newcastle

1843

January 11 1843 Falmouth sailed Jane & Ellen, Parry for Liverpool

January 18 1843 Falmouth sailed Jane & Ellen, Parry for Liverpool
April 18 1843 Dublin arrived Jane & Ellen, Parry from Newcastle
April 25 1843 Caernarvon arrived Jane & Ellen, Parry from Dublin
June 2 1843 Caernarvon sailed Jane & Ellen, Parry for London
July 10 1843 Runcorn arrived Jane & Ellen, Parry from Newhaven
July 20 1843 Runcorn sailed Jane & Ellen, Parry for Liverpool
August 21 1843 Deal arrived & proceeded Jane & Ellen, Parry A B S No.227
August 23 1843 Griffin's wharf, London arrived Jane & Ellen, Parry from Liverpool
August 23 1843 London customs house entered inwards Jane & Ellen, Parry from
. Liverpool
September 21 1843 Mistle sailed Jane & Ellen, Parry for Liverpool
October 5 1843 Liverpool arrived Jane & Ellen, Parry from Ipswich

1844

April 16 1844 Beaumaris passed Jane & Ellen, Parry from London for Bangor
April 27 1844 Pickle Herring upper arrived Jane & Ellen, Parry from Bangor
May 11 1844 Newhaven arrived Jane & Ellen, Parry from London
May 30 1844 Runcorn arrived Jane & Ellen, Parry from Newhaven
June 2 1844 Runcorn sailed Jane & Ellen, Parry for Liverpool
June 5 1844 Port Penrhyn, Bangor arrived Jane & Ellen, Parry from Liverpool
July 27 1844 Pentewan arrived Jane & Ellen, Parry from London
August 4 1844 Pentewan sailed Jane & Ellen, Parry for Runcorn
August 19 1844 Runcorn sailed Jane & Ellen, Parry for Liverpool
September 17 1844 Caernarvon passed through the straits Jane & Ellen, Parry
. from Bangor for London
September 20 1844 Falmouth put in Jane & Ellen, Parry from Bangor

September 24 1844 Falmouth proceeded Jane & Ellen, Parry for London

September 30 1844 Deal arrived & proceeded Jane & Ellen, Parry A B S No.227

October 29 1844 Shoreham arrived Jane & Ellen, Parry from London - barley

November 29 1844 Runcorn arrived Jane & Ellen, Parry from Shoreham

December 5 1844 Runcorn sailed Jane & Ellen, Parry for Bangor

December 10 1844 Port Penrhyn, Bangor arrived Jane & Ellen, Parry from
. Liverpool

1845

January 31 1845 Caernarvon passed through the straits Jane & Ellen, Parry for
. London from Bangor

February 25 1845 St Kathrine's dock, London hauled in to load Jane & Ellen, Parry

March 4 1845 London customs house outwards Jane & Ellen, Parry for Plymouth

March 25 1845 Pentewan arrived Jane & Ellen, Parry from Plymouth

March 28 1845 Pentewan sailed Jane & Ellen, Parry for Runcorn

April 1 1845 Pentewan arrived Jane & Ellen, Parry from Plymouth

April 3 1845 Pentewan sailed Jane & Ellen, Parry for Runcorn

April 25 1845 Caernarvon passed through the straits Jane & Ellen, Parry from
. Liverpool for Newcastle

May 18 1845 Lowestoft in the Roads Jane & Ellen, Parry from Liverpool for
. Newcastle

June 21 1845 Pentewan arrived Jane & Ellen, Parry from Plymouth

July 7 1845 Liverpool arrived Jane & Ellen, Parry from Poole

September 3 1845 Port Penrhyn, Bangor sailed Jane & Ellen, Parry for London

September 5 1845 Caernarvon passed through the straits Jane & Ellen, Parry for
. London from Bangor

September 11 1845 Dartmouth arrived Jane & Ellen, Parry from Bangor

October 13 1845 Fowey sailed Jane & Ellen, Parry for Liverpool

October 20 1845 Liverpool arrived Jane & Ellen, Parry from London

1846

January 21 1846 Port Penrhyn, Bangor sailed Jane & Ellen, Parry for Lynn

February 9 1846 Caernarvon passed through the straits Jane & Ellen, Parry for
· Lynn

April 7 1846 Pentewan arrived Jane & Ellen, Parry from Portsmouth

April 25 1846 Pentewan sailed Jane & Ellen, Parry for Runcorn

May 8 1846 Runcorn arrived Jane & Ellen, Parry from Pentewan

To July 26 1846 Portland Roads arrived Jane & Ellen, Parry for Newcastle

August 15 1846 Portinllaen put in Jane & Ellen, Parry for Dublin

August 27 1846 Port Penrhyn, Bangor arrived Jane & Ellen, Parry

October 16 1846 Caernarvon passed through the straits Jane & Ellen, Parry from
· Bangor for London

December 5 1846 St Marys, Scilly sailed Jane & Ellen, Parry for Liverpool

December 21 1846 Liverpool arrived Jane & Ellen, Parry from London

1847

March 29 1847 Caernarvon passed through the straits Jane & Ellen, Parry from
· Bangor for London

April 7 1847 Maldon arrived Jane & Ellen, Parry from Bangor – slate

April 21 1847 Maldon sailed Jane & Ellen, Parry - ballast

April 29 1847 Portland Roads put in for shelter Jane & Ellen, Parry from
· Newhaven

May 15 1847 Runcorn sailed Jane & Ellen, Parry for Liverpool

June 30 1847 Port Penrhyn, Bangor sailed Jane & Ellen, Parry for Whitstable

August 7 1847 Portinllaen sailed Jane & Ellen, Parry for Liverpool

August 11 1847 Runcorn arrived Jane & Ellen, Parry from Pentewan

August 19 1847 Port Penrhyn, Bangor arrived Jane & Ellen, Parry

October 6 1847 Falmouth put in Jane & Ellen, Parry from Bangor for London

October 7 1847 Falmouth sailed Jane & Ellen, Parry for London

October 25 1847 London customs house cleared out Jane & Ellen, Parry for Dublin

November 5 1847 Falmouth arrived Jane & Ellen, Parry from London for Dublin

November 16 1847 Dublin arrived Jane & Ellen, Parry from London

November 26 1847 Dublin sailed Jane & Ellen, Parry for Bangor

November 29 1847 Portinllaen remains schooner Jane & Ellen, Parry for
· Caernarvon

December 7 1847 Portinllaen remains Jane & Ellen, Parry for Bangor

December 11 1847 Port Penrhyn, Bangor arrived Jane & Ellen, Parry from Dublin

1848

January 12 1848 Carnarvon arrived Jane & Ellen, Parry from Bangor

January 28 1848 Carnarvon sailed Jane & Ellen, Parry for London

February 3 1848 Porthdynllaen arrived Jane & Ellen, Parry

February 4 1848 Porthdynllaen sailed Jane & Ellen, Parry

March 9 1848 Falmouth put in Jane & Ellen, Parry from London for Dublin

March 15 1848 Penzance arrived in the roads Jane & Ellen, Parry from London
· for Dublin

March 16 1848 Penzance sailed Jane & Ellen, Parry for Dublin

March 21 1848 Dublin arrived Jane & Ellen, Parry from London

May 10 1848 Port Penrhyn, Bangor sailed Jane & Ellen, Parry for Whitstable

May 10 1848 Caernarvon passed through the straits Jane & Ellen, Parry

May 31 1848 Newhaven arrived Jane & Ellen, Parry from Whitstable - ballast

May 31 1848 Newhaven sailed Jane & Ellen, Parry for Liverpool – boulders

June 6 1848 Newhaven sailed Jane & Ellen, Parry for Liverpool

June 27 1848 Runcorn arrived Jane & Ellen, Parry from Newhaven

July 3 1848 Runcorn sailed Jane & Ellen, Parry for Liverpool

July 13 1848 Carnarvon arrived Jane & Ellen, Parry from Runcorn

September 8 1848 Dunkirk arrived Jane & Ellen, Parry from London

October 6 1848 Falmouth sailed Jane & Ellen, Parry for Belfast

October 22 1848 Belfast arrived Jane & Ellen, Parry from Dunkirk – flour

November 2 1848 Belfast sailed Jane & Ellen, Parry for Pwllheli

1849

April 25 1849 Newhaven arrived Jane & Ellen, Parry from Bangor

May 3 1849 Newhaven sailed Jane & Ellen, Parry for Liverpool

May 12 1849 Portinllaen in the bay Jane & Ellen, Parry from Newhaven for
· Liverpool

May 31 1849 Port Penrhyn, Bangor arrived Jane & Ellen, Parry

October 2 1849 Looe sailed Jane & Ellen, Parry for Chester

November 4 1849 Carnarvon arrived Jane & Ellen, Parry from Flint

November 10 1849 Carnarvon arrived Jane & Ellen, Parry from Flint

1850

March 14 1850 Carnarvon sailed Jane & Ellen, Parry for Yarmouth,

March 28 1850 Yarmouth, Norfolk arrived Jane & Ellen, Parry from Carnarvon

March 31 1850 Yarmouth sailed Jane & Ellen, Parry for Bristol

April 8 1850 Yarmouth, Norfolk arrived Jane & Ellen, Parry from Carnarvon

April 27 1850 Yarmouth sailed Jane & Ellen, Parry for Bristol

May 3 1850 Bristol arrived Jane & Ellen, Parry from Yarmouth

May 9 1850 Bristol arrived Jane & Ellen, Parry from Yarmouth – barley
May 25 1850 Bristol, Pill sailed Jane & Ellen, Parry for Plymouth
June 19 1850 Pentewan arrived Jane & Ellen, Parry from Plymouth
June 26 1850 Pentewan sailed Jane & Ellen, Parry for Liverpool
July 24 1850 Liverpool cleared out Jane & Ellen, Parry for Colchester
July 27 1850 Caernarvon remain Jane & Ellen, Parry from Liverpool for Colchester
July 28 1850 Caernarvon sailed Jane & Ellen, Parry for Colchester
August 3 1850 Colchester arrived Jane & Ellen, Parry from Liverpool
August 14 1850 Colchester sailed Jane & Ellen, Parry for Newcastle
August 27 1850 Pentewan sailed Jane & Ellen, Parry for Liverpool
September 6 1850 Liverpool arrived Jane & Ellen, Parry from Fowey
October 21 1850 Caernarvon sailed Jane & Ellen, Parry for Hull
October 24 1850 Porthdinllaen arrived Jane & Ellen, Parry
October 25 1850 Porthdinllaen sailed Jane & Ellen, Parry
November 1 1850 Hull arrived Jane & Ellen, Parry from Carnarvon
November 25 1850 Bangor sailed Jane & Ellen, Parry for Runcorn
November 29 1850 Plymouth arrived Jane & Ellen, Parry from Hull
December 13 1850 Pentewan arrived Jane & Ellen, Parry from Plymouth
December 24 1850 Caernarvon passed through the straits Jane & Ellen, Parry
. from Pentewan for Liverpool
December 29 1850 Liverpool arrived Jane & Ellen, Parry from Fowey

1851

January 22 1851 Liverpool cleared out Jane & Ellen, Parry for Dublin
February 17 1851 Dublin arrived Jane & Ellen, Parry from Liverpool
February 28 1851 Carnarvon arrived Jane & Ellen, Parry from Dublin
April 8 1851 Porthdinllaen put in Jane & Ellen, Parry from Port Dinorwic

April 10 1851 Carnarvon sailed Jane & Ellen, Parry for Kilorgan
May 15 1851 Porthdinllaen put in Jane & Ellen, Parry from Milltown for Liverpool
May 21 1851 Liverpool arrived Jane & Ellen, Parry from Milltown
May 23 1851 Porthdinllaen arrived Jane & Ellen, Parry
May 24 1851 Porthdinllaen sailed Jane & Ellen, Parry
June 6 1851 Carnarvon arrived Jane & Ellen, Parry from Runcorn
June 11 1851 Carnarvon arrived Jane & Ellen, Parry from Runcorn
August 4 1851 Carnarvon sailed Jane & Ellen, Parry for London
September 5 1851 London customs house cleared out Jane & Ellen, Parry for
. Shoreham
September 12 1851 Shoreham arrived Jane & Ellen, Parry from London
September 22 1851 Shoreham sailed Jane & Ellen, Parry for Runcorn
October 27 1851 Runcorn arrived Jane & Ellen, Parry from Shoreham
December 30 1851 Port Penrhyn, Bangor sailed Jane & Ellen, Parry for Ballyrissio

1852

January 6 1852 Carnarvon remain Jane & Ellen, Parry from Bangor for Killorgan
January 16 1852 Carnarvon remain Jane & Ellen, Parry from Bangor for Killorgan
January 26 1852 Carnarvon remain Jane & Ellen, Parry from Bangor for Killorgan
February 7 1852 Carnarvon remain Jane & Ellen, Parry from Bangor for Killorgan
February 10 1852 Carnarvon sailed Jane & Ellen, Parry for Killorgan
March 4 1852 Killorgan arrived Jane & Ellen, Parry from Bangor - slates
August 2 1852 London customs house entered in Jane & Ellen 80, Parry of
. Pwllheli from Tralee in Pickle Herring wharf agent J H Brenan
August 25 1852 London customs house cleared out Jane & Ellen, Parry for Exeter
September 4 1852 Exeter arrived Jane & Ellen, Parry from London
w/e September 29 1852 Exeter sailed Jane & Ellen, Parry for Padstow

October 18 1852 Scilly arrived Jane & Ellen, Parry from Fowey to Liverpool

October 26 1852 Runcorn arrived Jane & Ellen, Parry from Pentewan

November 28 1852 Beaumaris passed by Jane & Ellen, Parry for Poole

December 1 1852 Carnarvon remain Jane & Ellen, Parry from Frodsham for Poole

December 7 1852 Carnarvon remain Jane & Ellen, Parry from Runcorn for Poole

December 22 1852 Carnarvon remain Jane & Ellen, Parry from Frodsham for
Poole

1853

January 1 1853 Carnarvon remain Jane & Ellen, Parry from Frodsham for Poole

January 11 1853 Carnarvon remain Jane & Ellen, Parry from Frodsham for Poole

February 1 1853 Poole arrived Jane & Ellen, Parry from Runcorn – salt

March 26 1853 Beaumaris passed by Jane & Ellen, Parry for Bangor

March 31 1853 Port Penrhyn, Bangor arrived Jane & Ellen, Parry from Runcorn

April 6 1853 Port Penrhyn, Bangor arrived Jane & Ellen, Parry

May 23 1853 Caernarvon passed through the straits Jane & Ellen, Parry for
Jersey from Bangor

June 9 1853 Jersey sailed Jane & Ellen, Parry for Newcastle

September 1 1853 Galway sailed Jane & Ellen, Parry seeking cargo

September 9 1853 Porthdinllaen put in Jane & Ellen, Parry from Galway for
Bangor

September 15 1853 Porthdinllaen arrived Jane & Ellen, Parry

September 16 1853 Porthdinllaen sailed Jane & Ellen, Parry

October 2 1853 Carnarvon remains Jane & Ellen, Parry from this port for Whitby

October 6 1853 Carnarvon sailed Jane & Ellen, Parry for Whitby

November 14 1853 Poole arrived Jane & Ellen, Parry from Newcastle

December 2 1853 Poole sailed Jane & Ellen, Parry for Runcorn

December 12 1853 Holyhead put in windbound Jane & Ellen, Parry from Poole for
 . Runcorn

December 15 1853 Beaumaris put in windbound Jane & Ellen, Parry for Liverpool

1854

January 6 1854 Windbound off Garth Point, near Bangor Jane & Ellen, Parry for
 . Runcorn

January 14 1854 Runcorn arrived Jane & Ellen, Parry from Poole

February 2 1854 Runcorn sailed Jane & Ellen, Parry for Bangor

March 28 1854 Port Penrhyn, Bangor cleared out Jane & Ellen, Parry - slates

March 28 1854 Caernarvon passed through the straits Jane & Ellen, Parry for
 . Bristol from Bangor

March 28 1854 Porthdinllaen put in Jane & Ellen, Parry from Carnarvon for Bristol

April 3 1854 Porthdinllaen sailed Jane & Ellen, Parry for Bristol

April 6 1854 Bristol arrived Jane & Ellen, Parry from Bangor

July 6 1854 Runcorn sailed Jane & Ellen, Parry

September 7 1854 Carnarvon sailed Jane & Ellen, Parry for London

September 7 1854 Porthdinllaen put in Jane & Ellen, Parry from Carnarvon for
 . London

September 13 1854 Porthdinllaen arrived Jane & Ellen, Parry

December 14 1854 Put into St Tudwall's Roads Jane & Ellen, Parry from
 . Chichester for Larne

1855

April 5 1855 Port Penrhyn, Bangor cleared out Jane & Ellen, Parry - slates

April 28 1855 London customs house cleared Jane & Ellen, Parry for Londonderry

July 5 1855 Port Penrhyn, Bangor arrived Jane & Ellen, Parry

August 16 1855 Port Penrhyn, Bangor cleared out Jane & Ellen, Parry - slates

October 11 1855 Porthdinllaen arrived Jane & Ellen, Parry

October 12 1855 Porthdinllaen sailed Jane & Ellen, Parry

October 18 1855 Port Penrhyn, Bangor arrived Jane & Ellen, Parry

November 1 1855 Port Penrhyn, Bangor cleared out Jane & Ellen, Parry – slates

1856

January 10 1856 Porthdinllaen sailed Jane & Ellen, Parry

January 17 1856 Port Penrhyn, Bangor arrived Jane & Ellen, Parry

January 19 1856 Port Penrhyn, Bangor cleared out Jane & Ellen, Parry – slates

April 29 1856 Port Penrhyn, Bangor cleared out Jane & Ellen, Parry – slates

June 5 1856 Port Penrhyn, Bangor arrived Jane & Ellen, Parry

July 6 1856 Porthdinllaen anchored Jane & Ellen, Parry – gale

July 10 1856 Porthdinllaen anchored Jane & Ellen, Parry

August 7 1856 Port Penrhyn, Bangor arrived Jane & Ellen, Parry

August 14 1856 Port Penrhyn, Bangor cleared out Jane & Ellen, Parry – slates

September 22 1856 Poole put in damaged Jane & Ellen, Parry from Newhaven for
Runcorn

October 6 1856 Poole sailed Jane & Ellen, Parry for Runcorn – clay

October 16 1856 Porthdinllaen arrived Jane & Ellen, Parry

October 17 1856 Porthdinllaen sailed Jane & Ellen, Parry

November 13 1856 Port Penrhyn, Bangor arrived Jane & Ellen, Parry

November 20 1856 Port Penrhyn, Bangor cleared out Jane & Ellen, Parry – slates

1857

March 12 1857 Port Penrhyn, Bangor cleared out Jane & Ellen, Parry – slates

May 4 1857 Swansea arrived Jane & Ellen, Parry from London

May 14 1857 Port Penrhyn, Bangor arrived Jane & Ellen, Parry
June 4 1857 Port Penrhyn, Bangor cleared out Jane & Ellen, Parry – slates
June 11 1857 Port Penrhyn, Bangor put in Jane & Ellen, Parry
September 3 1857 Port Penrhyn, Bangor arrived Jane & Ellen, Parry
October 18 1857 London customs house cleared Jane & Ellen for Plymouth
October 26 1857 Dublin arrived Jane & Ellen from London
November 12 1857 Porthdinllaen sailed Jane & Ellen, Parry

1858

January 2 1858 Eling arrived Jane & Ellen from London - guano
May 17 1858 Galway arrived Jane & Ellen, Parry from London
June 14 1858 Queenstown arrived Jane & Ellen, Parry from Galway – oats
June 18 1858 Queenstown sailed Jane & Ellen for Galway
June 22 1858 Newport arrived Jane & Ellen, Parry from Galway
July 10 1858 Newport, Mon sailed Jane & Ellen, Parry for Liverpool
July 15 1858 Porthdinllaen arrived Jane & Ellen, Parry
August 20 1858 Dublin arrived Jane & Ellen from Queenstown
September 9 1858 Porthdinllaen arrived Jane & Ellen, Parry
December 16 1858 Porthdinllaen arrived Jane & Ellen, Parry

1859

April 15 1859 London customs house entered in Jane & Ellen from Aberystwith
August 17 1858 Port Penrhyn, Bangor sailed Jane & Ellen, Parry – slates
December 15 1859 Ipswich sailed Jane & Ellen, Parry for Holyhead
December 23 1859 Falmouth arrived Jane & Ellen, Parry from Ipswich for
Holyhead

1860

February 16 1860 Dublin arrived Jane & Ellen, Parry from Bangor - slates

March 24 1860 Porthdinllaen arrived Jane & Ellen, Parry from London

April 12 1860 Gt Yarmouth sailed Jane & Ellen, Parry for Donegal

April 26 1860 Porthdinllaen arrived Jane & Ellen, Parry from Gt Yarmouth

April 27 1860 Porthdinllaen sailed Jane & Ellen, Parry for Donegal

August 23 1860 Porthdinllaen arrived Jane & Ellen, Parry from Holyhead

1861

April 13 1861 Port Penrhyn, Bangor cleared out Jane & Ellen, Parry – slates

w/e May 16 1861 Poole arrived Jane & Ellen, Parry

May 13 1861 Poole sailed Jane & Ellen, Parry for Runcorn

May 23 1861 Porthdinllaen arrived Jane & Ellen, Parry from Poole

June 6 1861 Port Penrhyn, Bangor arrived Jane & Ellen, Parry

July 4 1861 Port Penrhyn, Bangor cleared out Jane & Ellen, Parry – slates

August 30 1861 Carnarvon arrived Jane & Ellen, Parry from Runcorn

September 6 1861 Carnarvon arrived Jane & Ellen, Parry from Runcorn

September 12 1861 Port Penrhyn, Bangor arrived Jane & Ellen, Parry

1862

March 12 1862 Port Penrhyn, Bangor cleared out Jane & Ellen, Parry – slates

March 13 1862 Carnarvon sailed Jane & Ellen, Parry for London

March 31 1862 Dublin arrived Jane & Ellen from London

May 15 1862 Port Penrhyn, Bangor arrived Jane & Ellen, Parry

July 17 1862 Port Penrhyn, Bangor cleared out Jane & Ellen, Parry – slates

August 29 1862 Glasgow arrived Jane & Ellen, Parry from Sligo

September 17 1862 Porthdinllaen arrived Jane & Ellen, Parry from Clyde

September 18 1862 Porthdinllaen sailed Jane & Ellen, Parry for Dieppe

September 28 1862 Dieppe arrived Jane & Ellen, Parry from Clyde

November 11 1862 Poole sailed Jane & Ellen, Parry for Runcorn

November 22 1862 Holyhead sailed Jane & Ellen, Parry for Liverpool

December 18 1862 Carnarvon arrived Jane & Ellen, Parry from Runcorn

1863

May 27 1863 Porthdinllaen arrived Jane & Ellen, Parry from Dublin

May 28 1863 Porthdinllaen sailed Jane & Ellen, Parry for Port Dinorwic

July 10 1863 London customs house cleared out Jane & Ellen for Penzance

September 17 1863 Porthdinllaen arrived Jane & Ellen, Parry from Port Dinorwic

September 27 1863 Waterford arrived Jane & Ellen, Parry from Bangor -slates 78

September 27 1863 Tide not passage arrived Jane & Ellen 78, Parry from Bangor
for Cork -slates

October 9 1863 Cork arrived Jane & Ellen, Parry from Bangor

December 3 1863 Port Penrhyn, Bangor arrived Jane & Ellen, Parry

1864

February 19 1864 Dublin arrived Jane & Ellen from Ipswich

March 12 1864 Off Dungeness at anchor 631 HDQB Jane and Ellen of Caernarvon

March 20 1864 Porthdinllaen arrived Jane & Ellen from London

March 25 1864 Porthdinllaen sailed Jane & Ellen, Parry for Wigton

w/e July 30 1864 Sligo arrived Jane & Ellen from Bangor – 140 tons slates

w/e August 20 1864 Sligo arrived Jane & Ellen from Bangor – 140 tons slates

w/e September 2 1864 Sligo arrived Jane & Ellen from Bangor – 140 tons slates

September 5 1864 Liverpool arrived Jane & Ellen from Ballina

September 26 1864 Carnarvon arrived Jane & Ellen, Parry from Liverpool

November 3 1864 Carnarvon sailed Jane & Ellen, Parry

1865

January 21 1865 Ipswich arrived Jane & Ellen, Parry from London

January 28 1865 Ipswich sailed Jane & Ellen, Parry for Caen

February 25 1865 Larne arrived Jane & Ellen, Parry from Ipswich

April 8 1865 Beaumaris windbound Jane & Ellen, Parry for London

June 14 1865 Cork arrived Jane & Ellen, Parry from Newcastle

June 21 1865 Cork sailed Jane & Ellen, Parry for Carnarvon

June 25 1865 Portinllaen arrived Jane & Ellen, Parry from Cork

July 4 1865 Portinllaen sailed Jane & Ellen, Parry for Firth of Forth

July 6 1865 Portinllaen sailed Jane & Ellen, Parry for Wigton Bay

September 11 1865 Newhaven arrived Jane & Ellen, Parry from Newcastle

October 4 1865 Swansea arrived Jane & Ellen, Parry from Padstow

October 12 1865 Dublin arrived Jane & Ellen, Parry from Swansea

October 13 1865 Off Margate Jane & Ellen of Caernarvon

October 28 1865 Port Penrhyn, Bangor arrived Jane & Ellen, Parry

1866

February 17 1866 Carnarvon sailed Jane & Ellen, Parry for London

June 21 1866 Porthdinllaen arrived Jane & Ellen, Parry from Carnarvon

June 24 1866 Porthdinllaen sailed Jane & Ellen, Parry for London

July 19 1866 Middlesbrough arrived Jane & Ellen, Parry from London

August 25 1866 Porthdinllaen put in Jane & Ellen, Parry from Dieppe for Runcorn

August 29 1866 Liverpool arrived Jane & Ellen, Parry from Dieppe

October 29 1866 Portsmouth arrived Jane & Ellen, Parry from Bangor after
collision damaged

November 5 1866 Portsmouth sailed Jane & Ellen, Parry for London – after repair

1867

April 11 1867 Port Penrhyn, Bangor sailed Jane & Ellen, Parry – slates

May 25 1857 Victoria dock, London Jane & Ellen 78, Parry for Dublin

May 28 1857 London customs house cleared out Jane & Ellen, Parry for Dublin

June 13 1867 Dublin arrived Jane & Ellen, Parry from London

June 27 1867 Port Penrhyn, Bangor arrived Jane & Ellen, Parry

October 30 1867 Port Penrhyn, Bangor sailed Jane & Ellen, Parry – slates

November 22 1867 Off Dover Jane & Ellen, Parry HDQB of Carnarvon from Bangor

December 10 1867 London customs house cleared out Jane & Ellen for Belfast

December 31 1867 Falmouth arrived Jane & Ellen, Parry from London for Belfast

1868

January 22 1868 Belfast sailed Jane & Ellen, Parry for London

February 7 1868 Belfast sailed Jane & Ellen, Parry for Bangor(NW)

February 13 1868 Port Penrhyn, Bangor arrived Jane & Ellen, Parry

May 21 1868 Porthdinllaen arrived Jane & Ellen, Parry from Bangor

June 16 1868 Hamburg arrived Jane & Ellen, Parry from Bangor

June 28 1868 Hamburg sailed Jane & Ellen, Parry for Shields

August 6 1868 Porthdinllaen arrived Jane & Ellen, Parry from Plymouth

August 13 1868 Porthdinllaen sailed Jane & Ellen, Parry for Bangor

August 14 1868 Port Penrhyn, Bangor arrived Jane & Ellen, Parry

November 12 1868 Port Penrhyn, Bangor sailed Jane & Ellen, Parry

December 24 1868 Porthdinllaen arrived Jane & Ellen, Parry from Porthcawl

1869

January 14 1869 Port Penrhyn, Bangor arrived Jane & Ellen, Parry

February 4 1869 Port Penrhyn, Bangor sailed Jane & Ellen, Parry

February 25 1869 Carnarvon sailed Jane & Ellen, Parry for London

March 17 1869 Ipswich arrived Jane & Ellen, Parry from London

April 8 1869 Porthdinllaen arrived Jane & Ellen, Parry from Ipswich

April 15 1869 Porthdinllaen sailed Jane & Ellen, Parry for Isle of Man

May 13 1869 Port Penrhyn, Bangor sailed Jane & Ellen, Parry – slates

June 5 1869 London customs house cleared out Jane & Ellen for Londonderry

July 1 1869 Porthdinllaen arrived Jane & Ellen, Parry from London

July 15 1869 Workington arrived Jane & Ellen, Parry from Londonderry

July 22 1869 Workington sailed Jane & Ellen, Parry for Londonderry

August 7 1869 Carnarvon sailed Jane & Ellen, Parry for London

August 13 1869 Porthdinllaen arrived Jane & Ellen, Parry from Carnarvon

August 19 1869 Porthdinllaen sailed Jane & Ellen, Parry for London

September 22 1869 London customs house cleared out Jane & Ellen for Runcorn

October 11 1869 Runcorn arrived Jane & Ellen, Parry from London

November 4 1869 Port Penrhyn, Bangor arrived Jane & Ellen, Parry

November 9 1869 Beaumaris arrived Jane & Ellen, Parry from Liverpool

November 25 1869 Port Penrhyn, Bangor sailed Jane & Ellen, Parry – slates

w/e December 2 1869 Galway arrived Jane & Ellen, Parry from Bangor - Slates

December 19 1869 Ipswich arrived Jane & Ellen, Parry from London

1870

January 15 1870 Ipswich sailed Jane & Ellen, Parry west

January 20 1870 Falmouth put in Jane & Ellen, Parry Ipswich for Bowmore, Islay

January 30 1870 Holyhead arrived Jane & Ellen, Parry from Ipswich for Bowling

September 15 1870 Poole arrived Jane & Ellen, Parry from Southampton

September 27 1870 Poole sailed Jane & Ellen, Parry for Runcorn

October 7 1870 Runcorn arrived Jane & Ellen, Parry from Poole

November 19 1870 Porthdinllaen arrived Jane & Ellen, Parry from Dublin

December 1 1870 Porthdinllaen sailed Jane & Ellen, Parry

December 29 1870 Porthdinllaen arrived Jane & Ellen, Parry from Llanaelhaiarn

1871

January 5 1871 London customs house cleared out Jane & Ellen for Belfast

February 2 1871 Belfast arrived Jane & Ellen, Parry from London

February 8 1871 Belfast sailed Jane & Ellen, Parry for Portmadoc

February 23 1871 Porthdinllaen arrived Jane & Ellen, Parry from Belfast

February 23 1871 Porthdinllaen sailed Jane & Ellen, Parry for Llanaelhaiarn

February 23 1871 Llanaelhaiarn arrived Jane & Ellen, Parry from Belfast

March 26 1871 Porthdinllaen in Roadstead Jane & Ellen, Parry for London

April 29 1871 Ipswich sailed Jane & Ellen west

May 18 1871 Porthdinllaen arrived Jane & Ellen, Parry

June 23 1871 Porthdinllaen arrived Jane & Ellen, Parry from Llanaelhaiarn

June 23 1871 Porthdinllaen sailed Jane & Ellen, Parry for London

July 30 1871 Porthdinllaen arrived Jane & Ellen, Parry from London

August 7 1871 Londonderry arrived Jane & Ellen, Parry from London

August 30 1871 Carnarvon sailed Jane & Ellen, Parry for Glasgow

September 15 1871 Glasgow sailed Jane & Ellen, Parry for Dundalk

September 18 1871 Belfast arrived Jane & Ellen, Parry from Glasgow

October 19 1871 Porthdinllaen in Roadstead Jane & Ellen, Parry for London- setts

October 20 1871 Porthdinllaen sailed Jane & Ellen, Parry for London

November 18 1871 London, Russia dock Jane & Ellen 78, Parry from Carnarvon

1872

February 1 1872 Port Penrhyn, Bangor arrived Jane & Ellen, Parry

March 18 1872 Shoreham sailed Jane & Ellen, Parry for Ipswich

March 25 1872 Ipswich arrived Jane & Ellen, Parry from north

April 26 1872 Bowmore, Isla arrived Jane & Ellen, Parry

May 16 1872 Port Penrhyn, Bangor arrived Jane & Ellen, Parry

May 18 1872 Beaumaris arrived Jane & Ellen, Parry from Dublin

July 1 1872 Porthdinllaen put in Jane & Ellen, Parry from Bangor

July 4 1872 Porthdinllaen Jane & Ellen, Parry from Bangor for Southampton put
 in – leaky

July 5 1872 Porthdinllaen sailed Jane & Ellen, Parry for Southampton

July 11 1872 Porthdinllaen sailed Jane & Ellen, Parry for Shoreham

July 28 1872 Porthdinllaen arrived Jane & Ellen, Parry from Southampton

August 2 1872 Porthdinllaen sailed Jane & Ellen, Parry for Londonderry

September 6 1872 Porthdinllaen arrived Jane & Ellen, Parry from Llanaelhaiarn
 for Cardiff

September 7 1872 Porthdinllaen sailed Jane & Ellen, Parry for Bristol

October 16 1872 Porthdinllaen arrived Jane & Ellen, Parry from Bristol Channel

October 24 1872 Carnarvon sailed Jane & Ellen, Parry for Bangor

1873

March 13 1873 Port Penrhyn, Bangor sailed Jane & Ellen, Parry for Shoreham

April 3 1873 Shoreham arrived Jane & Ellen, Parry from Bangor

April 15 1873 Shoreham sailed Jane & Ellen, Parry for Runcorn

June 1 1873 Porthdinllaen arrived Jane & Ellen, Parry from Dublin

June 12 1873 Porthdinllaen arrived Jane & Ellen, Parry from Llanaelhaiarn

August 27 1873 Llanaelhaiarn arrived Jane & Ellen, Parry from Porthdinllaen

September 23 1873 Porthdinllaen sailed Jane & Ellen, Parry for Portsmouth

September 24 1873 Falmouth arrived Jane & Ellen, Parry from Carnarvon for
Portsmouth

December 17 1873 Llanaelhaiarn arrived Jane & Ellen, Parry from Dublin

1874

January 5 1874 Llanaelhaiarn in the harbour Jane & Ellen, Parry

February 6 1874 London Regents Canal Jane & Ellen, Parry from Caernarvon

February 11 1874 London customs house cleared out Jane & Ellen, Parry for
Rothesay

March 24 1874 Holyhead sailed Jane & Ellen, Parry for Rothesay

April 22 1874 Liverpool arrived Jane & Ellen, Parry from Caernarvon

April 27 1874 Porthdinllaen arrived Jane & Ellen, Parry from Birkenhead

April 28 1874 Porthdinllaen sailed Jane & Ellen, Parry for Llanaelhaiarn

May 4 1874 Porthdinllaen arrived Jane & Ellen, Parry from Llanaelhaiarn

May 5 1874 Porthdinllaen sailed Jane & Ellen, Parry for Bristol

June 13 1874 Llanaelhaiarn arrived Jane & Ellen, Parry from Newry

July 1 1874 Llanaelhaiarn sailed Jane & Ellen, Parry for Bristol

July 2 1874 Porthdinllaen arrived Jane & Ellen, Parry from Llanaelhaiarn

July 5 1874 Porthdinllaen sailed Jane & Ellen, Parry for Bristol

July 27 1874 Cardiff sailed Jane & Ellen, Parry for Waterford

September 2 1874 Porthdinllaen ready for sea Jane & Ellen, Parry for Garston

September 22 1874 Porthdinllaen arrived Jane & Ellen, Parry from Liverpool

September 24 1874 Porthdinllaen sailed Jane & Ellen, Parry for Llanaelhaiarn

October 10 1874 Llanaelhaiarn ready for sea Jane & Ellen, Parry for Bristol

December 25 1874 Llanaelhaiarn ready for sea Jane & Ellen, Parry for Bristol

December 26 1874 Llanaelhaiarn sailed Jane & Ellen, Parry for Bristol

1875

January 8 1875 Porthdinllaen in Roadstead Jane & Ellen, Parry for Bristol

February 14 1875 Britonferry arrived Jane & Ellen, Parry from Bristol

April 8 1875 Llanaelhaiarn ready for sea Jane & Ellen, Parry for Runcorn

May 18 1875 Carnarvon arrived Jane & Ellen, Parry from Swansea

June 17 1875 Porthdinllaen sailed Jane & Ellen, Parry for Bristol

June 26 1875 Newport, Mon arrived Jane & Ellen 78, Parry from Bristol – light

June 29 1875 Newport, Mon sailed Jane & Ellen, Parry for Cork

July 15 1875 Porthdinllaen arrived Jane & Ellen, Parry from Dublin

July 16 1875 Porthdinllaen sailed Jane & Ellen, Parry for Llanaelhaiarn

October 11 1875 Llanaelhaiarn in the harbour Jane & Ellen, Parry for Bristol

October 14 1875 Llanaelhaiarn sailed Jane & Ellen, Parry for Bristol

December 4 1875 Llanaelhaiarn arrived Jane & Ellen, Parry from Porthdinllaen

1876

January 6 1876 Briton Ferry arrived Jane & Ellen, Jones from Bristol – pig iron

February 21 1876 Porthdinllaen put back Jane & Ellen, Jones

March 20 1876 Bristol Pill passed Jane & Ellen from Caernarvon

March 28 1876 Cardiff sailed Jane & Ellen, Jones for Kingston
April 10 1876 Llanaelhaiarn arrived Jane & Ellen, Jones from Dublin
April 28 1876 Llanaelhaiarn sailed Jane & Ellen , Jones for Bristol
April 30 1876 Milford put in schooner Jane & Ellen of Carnarvon after collision
May 12 1876 Cardiff arrived Jane & Ellen 78, Jones from Bristol - wheat
May 19 1876 Cardiff sailed Jane & Ellen, Jones for Dublin
June 23 1876 Porthdinllaen passed Jane & Ellen, Parry from Llanaelhaiarn for
. Bristol
July 8 1876 Newport, Mon sailed Jane & Ellen, Jones for Aberthaw
August 5 1876 Deal passed Jane & Ellen of Caernarvon from North to west
September 4 1876 Llanaelhaiarn sailed Jane & Ellen, Parry for Garston
September 19 1876 Liverpool cleared out Jane & Ellen for Dublin
September 29 1876 Holyhead arrived Jane & Ellen, Jones from Garston for Dublin
October 23 1876 Porthdinllaen arrived Jane & Ellen, Jones from Dublin
November 2 1876 Llanaelhaiarn sailed Jane & Ellen, Parry for Bristol
November 10 1876 Bristol Pill passed Jane & Ellen from Caernarvon
November 16 1876 Bristol Pill sailed Jane & Ellen for Newport
November 28 1876 Belfast arrived Jane & Ellen from Garston – coal

1877

February 4 1877 Porthdinllaen put in Jane & Ellen, Jones from Llanaelhaiarn for
. Bristol
February 8 1877 Porthdinllaen sailed Jane & Ellen, Jones for Bristol
February 20 1877 Bristol Pill passed Jane & Ellen from Llanaelhaiarn
February 24 1877 Bristol Pill sailed Jane & Ellen for Cardiff
February 26 1877 Newport, Mon arrived Jane & Ellen, Jones from Bristol
March 2 1877 Porthdinllaen arrived Jane & Ellen, Jones from Newport

March 22 1877 Llanaelhaiarn arrived Jane & Ellen, Jones from Porthdinllaen

April 18 1877 Bristol Pill sailed Jane & Ellen for Cardiff

April 18 1877 Penarth Roads arrived Jane & Ellen 78, light

April 26 1877 Porthdinllaen put in Jane & Ellen, Jones from Cardiff to Liverpool

May 3 1877 Liverpool arrived Jane & Ellen, Jones from Cardiff

May 13 1877 Porthdinllaen arrived Jane & Ellen from Liverpool

June 12 1877 Llanaelhaiarn sailed Jane & Ellen, Jones for Dublin

July 2 1877 Liverpool arrived Jane & Ellen, Jones from Llanaelhaiarn

July 17 1877 Porthdinllaen sailed Jane & Ellen, Parry for Nevin

July 31 1877 Llanaelhaiarn sailed Jane & Ellen, Jones for Dublin

August 14 1877 Porthdinllaen put in Jane & Ellen, Jones from Llanaelhaiarn for
 . Dublin

August 20 1877 Liverpool arrived Jane & Ellen, Jones from Llanaelhaiarn

August 29 1877 Liverpool sailed Jane & Ellen, Jones for Warrenpoint

September 18 1877 Porthdinllaen put in Jane & Ellen, Jones from Newry for
 . Llanaelhaiarn

October 27 1877 Porthdinllaen put in & sailed Jane & Ellen, Jones from
 . Llanaelhaiarn for Swansea

November 9 1877 Porthdinllaen sailed Jane & Ellen, Parry for Swansea

November 11 1877 Abersoch In distress Jane & Ellen of Nevin, Life boat rescued
 . crew, went ashore near mouth river Soch

December 29 1877 Galway arrived Jane & Ellen from Liverpool

1878

January 21 1878 Galway windbound in Roads schooner Jane & Ellen for Cork

February 21 1878 Swansea sailed Jane & Ellen, Jones for Newry

February 27 1878 Newry arrived Jane & Ellen, Jones from Swansea

March 12 1878 Newry sailed Jane & Ellen, Jones for Bangor

March 12 1878 Beaumaris arrived Jane & Ellen from Newry
May 3 1878 Liverpool arrived Jane & Ellen from Newry
May 24 1878 Westport arrived Jane & Ellen from Bangor
June 11 1878 Westport Jane & Ellen, Jones seeking cargo
June 18 1878 Swansea sailed Jane & Ellen, Jones for Neath
June 19 1878 Neath vessels entered outwards Jane & Ellen 78, Jones for Treport
June 20 1878 Neath vessels cleared Jane & Ellen 78 for Treport –coal Dynevor Co
June 28 1878 Prawle Point passed east 12.20pm HDQB (Jane & Ellen schooner of
. Caernarvon)
July 15 1878 Treport sailed Jane & Ellen, Jones for England
July 24 1878 Aberdaron Bay arrived Jane & Ellen, Jones from Treport for Runcorn
July 26 1878 Aberdaron sailed Jane & Ellen, Jones for Runcorn
July 27 1878 Porthdinllaen put in Jane & Ellen, Jones from Treport for Runcorn
August 1 1878 Liverpool arrived Jane & Ellen, Jones from Treport
August 2 1878 Runcorn arrived Jane & Ellen, Jones from Treport
August 13 1878 Runcorn sailed Jane & Ellen
September 18 1878 Westonpoint arrived Jane & Ellen from Liverpool
September 26 1878 Llanaelhaiarn sailed Jane & Ellen, Jones for Dublin
September 29 1878 Porthdinllaen sailed Jane & Ellen, Jones for Dublin
October 15 1878 Porthdinllaen sailed Jane & Ellen for Dublin
October 18 1878 Dublin entered inwards Jane & Ellen from Caernarvon
November 27 1878 Dublin arrived Jane & Ellen, Jones from Caernarvon
December 13 1878 Llanaelhaiarn sailed Jane & Ellen, Jones for Dublin
December 13 1878 Porthdinllaen put in Jane & Ellen, Jones from Llanaelhaiarn for
. Dublin

1879

February 4 1879 Neath cleared Jane & Ellen for St Valery – coal-Dynevor Coal Co

March 15 1879 Cardiff arrived Jane & Ellen from St Valery – potatoes

March 25 1879 Milford arrived Jane & Ellen, Jones from Caernarvon

March 31 1879 Bristol, Pill arrived Jane & Ellen from Caernarvon

April 7 1879 Bristol sailed Jane & Ellen, Jones for Cardiff

April 16 1879 Cardiff sailed Jane & Ellen, Jones for Dublin

June 11 1879 Dublin arrived Jane & Ellen from Runcorn

July 18 1879 Liverpool cleared out Jane & Ellen

August 28 1879 Liverpool cleared out Jane & Ellen for Warrenpoint

December 2 1879 Runcorn sailed Jane & Ellen, Jones for Dublin



Fig. 3

Porthdinllaen

Appendix C Port Locations

Aberdaron is a village at the western tip of the Llŷn Peninsula in Caernarfonshire. It lies 15 miles west of Pwllheli and 33 miles southwest of Caernarfon,

Aberthaw is an area containing the villages of East Aberthaw and West Aberthaw, on the coast of South Wales about 5 miles west of Barry.

Amlwch Port is a port village in Anglesey, Wales.

Ballina is a town in north County Mayo, Ireland. It lies at the mouth of the River Moy near Killala Bay

Ballyrissio now Ballyrisode, Beach is located 11km west of Schull Town. The beach forms an inlet within the larger Toormore Bay, County Cork, Ireland

Bowling is a village in West Dunbartonshire, Scotland, it lies on the north bank of the Firth of Clyde, between the towns of Clydebank and Dumbarton.

Bowmore is a small town on the Scottish island of Islay. The Isle of Islay is the southernmost island of the Inner Southern Hebrides of Scotland

Briton Ferry is a town in the borough of Neath Port Talbot, Wales.

Caen is a port city and capital of Calvados department in northern France's Normandy region, reached via a ship canal at Ouistreham on the English Channel

Cove of Cork renamed Queenstown after a visit by Queen Victoria in 1849, renamed Cobh in 1920.

Dungeness is a headland on the coast of Kent, England,

Eling opposite side of River Test from Southampton

Frodsham on the River Mersey near Runcorn

Glamorganshire Canal in South Wales, UK, was begun in 1790. It ran along the valley of the River Taff from Merthyr Tydfil to the sea at Cardiff.

Goole is a port, The town was historically within the West Riding of Yorkshire and lies 19 miles south of York and 29 miles west of Hull

Garston is a district of Liverpool. Historically in Lancashire

Islay is the southernmost of the Inner Hebrides islands, off the west coast of Scotland.

Killorglin is a town in County Kerry, Ireland. It sits on the Ring of Kerry and the Wild Atlantic Way.

Kingstown The town was built following the 1816 legislation that allowed the building of a major port to serve Dublin. It was known as Dunleary until it was renamed Kingstown in honour of King George IV's 1821 visit, and in 1920 was given its present name, Dún Laoghaire, the original Irish form of Dunleary.

Llanhaiarn now Llanaelhaearn is a few miles from the beach at Trefor and 6 miles from the beaches of Nefyn and Porth Dinllaen on the Llŷn Peninsula in the Welsh county of Gwynedd.

Looe is a small coastal town in south-east Cornwall, England, 20 miles west of Plymouth

Menai Straits is a narrow stretch of shallow tidal water about 15 miles long, which separates the island of Anglesey from the mainland of Wales. It varies in width from 400 metres to 1,100 metres

Milltown Malbay, also Miltown Malbay, is a town in the west of County Clare, Ireland, near Spanish Point.

Mistley is a large village in northeast Essex, England, it is around 11 miles northeast of Colchester

Newhaven is a port in East Sussex in England, it lies at the mouth of the River Ouse, which has historically migrated westward from Seaford, one of the Cinque Ports

Penarth is a town in the Vale of Glamorgan, Wales, approximately 4 miles south of Cardiff city centre on the north shore of the Severn Estuary at the southern end of Cardiff Bay. The Roads is the anchorage off shore.

Pentewan is a coastal village and former port in south Cornwall, England, United Kingdom. It is situated 3 miles south of St Austell at the mouth of the St Austell River.

Porthcawl is a town on the south coast of Wales in the county borough of Bridgend, 25 miles west of Cardiff

Porthdinllaen is a small coastal village in the Dwyfor locality on the Llŷn Peninsula within Gwynedd, Wales, located on a small promontory, and historically in Caernarfonshire

Y Felinheli, formerly known in English as **Port Dinorwic**, is a village, beside the Menai Strait between Bangor and Caernarfon in Gwynedd, northwest Wales.

Queenstown named after a visit by Queen Victoria in 1849, previously Cove of Cork, renamed Cobh in 1920.

Rothesay is the principal town on the Isle of Bute, in the council area of Argyll and Bute, Scotland. It lies along the coast of the Firth of Clyde.

Shoreham-by-Sea is a coastal town and port in West Sussex, England, it is approximately equidistant from the city of Brighton to the east and the town of Worthing to the west.

Saint-Valery-sur-Somme, commune in the Somme department, is a seaport on the south bank of the River Somme estuary, between Dieppe and Boulogne.

Le **Tréport** is a commune in the Seine-Maritime department in Normandy, France

Warrenpoint is a small port town in County Down, Northern Ireland. It sits at the head of Carlingford Lough, south of Newry, and is separated from the Republic of Ireland by a narrow strait.

Westonpoint – part of Runcorn

Westport is a town on the edge of an Atlantic inlet, on Ireland's west coast, on the banks of the Carrowbeg River.

Whitstable is a seaside town on the north coast of Kent in south-east England, 5 miles north of Canterbury

Wigtown Bay is a large inlet of the Irish Sea on the coast of Galloway in southwest Scotland.

Appendix D Lloyds survey report for Repairs

REPORT of SURVEY for REPAIRS.

26622

No. in Reg. Book. **No.** 222. Survey held at London Date Dec 12th 1855
 on the "Jane and Ellen" Master D. Parry
 Tonnage 20 Built at Newin When built 1839
 By whom built _____ Owners Parry & Co.
 Port belonging to Carnarvon Destined Voyage _____
 If Surveyed Afloat or in Dry Dock Here + Off Dock

Last Survey, No. 1162 Port Panama Classed 12 Rest 07-59
 Class 12 59

REPAIRS now done on account of damage: for particulars see Special Report.

Port side: Six timbers, two lengths of Ceiling-plank, two planks of Wales, two planks in upper course of bottom, one length of Shelf, two planks of Ceiling, two upper-deck Beams to main hatch, and four Lodging-Planks, all removed with English Cast; one length of Waterway with Red Traije; one plank of Sheerside, two of Wales, two of Clamps, and two of Ceiling removed with Red Traije and Yeast; one length of Waterway with Red Traije, and four planks of deck with Yellowpine; the majority of the treenails on the Port
 P. F. O.

Decks	<u>Good where seen</u>	Treenails	<u>Good + pt new</u>	Windlass and Capstan	<u>Good</u>
Waterways	"	Breasthooks and Stenson	<u>Good where seen</u>	Pumps	"
Cainings	"	Transoms, Pointers, and Crutches	"	Boats	"
Upper Deck Beams & Fastenings	"	Timbers of the Frame at the openings	"	Masts, Yards, &c.	"
Lower Deck Beams & Fastenings	"	Ditto Ditto at other places	"	Sails	"
Planksheers	"	Keelsons	"	Anchor's No. of	<u>Sufficient</u>
Sheerstrakes	"	Clamps and Shelves	"	Cables	"
Topsides	"	Ceiling	"	Hawsers and Warps	"
Wales	"	Rudder	"	Standing & Running Rigging	"
Plank (Bottom) and Counter	"	Copper	When put on		

General Observations and Opinion, Caulking of Bottom, Deck, & Waterways: Good where tested.
This vessel now appears to be in good and efficient condition, and is eligible, in my opinion, to be again classed - A. I.

R. J. Reed

The Amount of Fee.....£ - : 10: - is received by me,
 Special Allowance 3 : 3 : 0
 Attendance 2 : 2 : 0
 Certificate (if required) _____

Committee's Minute 31st January 1855
 Character assigned Rest. 3 P 1

LON649-0198



26622 Low

Side down to turn of bidge, also those in seven marks
of planting at turn of bidge on Starboard side, removed
with Coupled oak; and the vessel re-caulked overall.

The Windlass has now been unhooked and the wood linings
stripped, the middle line and timbers cleared all fore &
aft, and the remaining requisitions of the Half time
survey have now been complied with.

R. J. Reed.



© 2019

Lloyd's Register
Foundation

Appendix E Cargo descriptions and Measures used

The "**quarter** of London" mentioned by Magna Carta as the national standard measure for wine, ale, and grain was $\frac{1}{4}$ ton or tun. It continued to be used, e.g. to regulate the prices of bread. This quarter (qrs) was a unit of 8 bushels of 8 gallons each, understood at the time as a measure of both weight and volume: the grain gallon or half-peck was composed of 76,800 (Tower) grains weight; the ale gallon was composed of the ale filling an equivalent container; and the wine gallon was composed of the wine weighing an equivalent amount to a full gallon of grain.

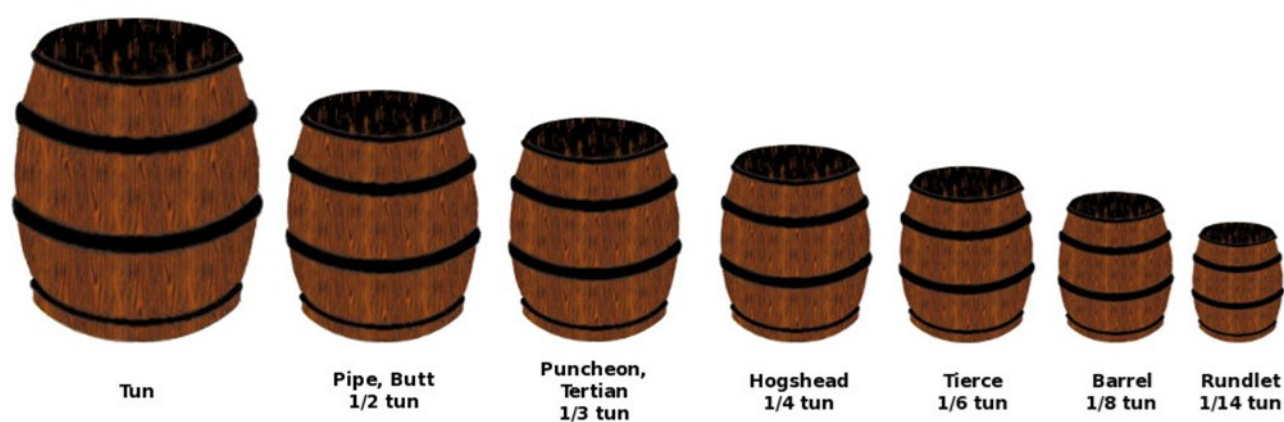


Fig. 4 Measures used for dry and wet goods

Pig iron a crude iron as first obtained from a smelting furnace, in the form of oblong blocks.

A **sett** is a slab of granite, shaped into square or rectangular blocks. These setts were used as cobblestones on streets throughout Britain.



Fig. 5 Map of Ireland showing Ports
 Ballyissio → Kilorgan → Miltown → Larne → Queenstown → Newry
 → Warrenpoint



Fig. 6 Map of Wales showing Ports

White arrow	Black arrow	Orange arrow	Grey arrow	Yellow arrow
Carnarvon	Runcorn	Porthdinllaen	Pwllheli	Porthcawl
Green arrow	Red arrow	Red arrow	Yellow arrow	Purple arrow
Aberdaron Bay	Milford	Llanaelhaearn	Neath	Beaumaris
Pink arrow	Red arrow	Yellow arrow	Red arrow	Green arrow
Aberthaw	Flint	Menai Straits	Almwch	



Fig. 7 Map of United Kingdom showing Ports

☐	→	☐	→	☐	→	☐	→	☐	→
☐	→	☐	→	☐	→	☐	→	☐	→
☐	→	☐	→	☐	→	☐	→	☐	→
☐	→	☐	→	☐	→	☐	→	☐	→
☐	→	☐	→	☐	→	☐	→	☐	→
☐	→	☐	→	☐	→	☐	→	☐	→

Appendix F Mercantile Navy List

1860 631 Jane and Ellen Caernarvon

No change until 1865 when more details included

1865

HDQB international code signal, 80 tons, D Parry Church Street, Nevin

1872 rig included – schooner

1876 address changes for D Parry Pen-y-Maes, Nevin

1881 not available on line

1882 owner changes to John Jones 28 Ambrose Street, Bangor, Caernarvonshire

1886 not available on line

1887 no entry

Crew Lists

The crew lists are listed until 1879 held by the Gwynedd Archives Service except

1861,1862, 1865 and 1875 which may be held by the National Maritime Museum

1870 which is in the National Archives REF. BT99/630

but not available on line.



Fig. 8 Map of Europe
→ Scilly Isles → Caen → Boulogne → Dieppe → Dunkirk