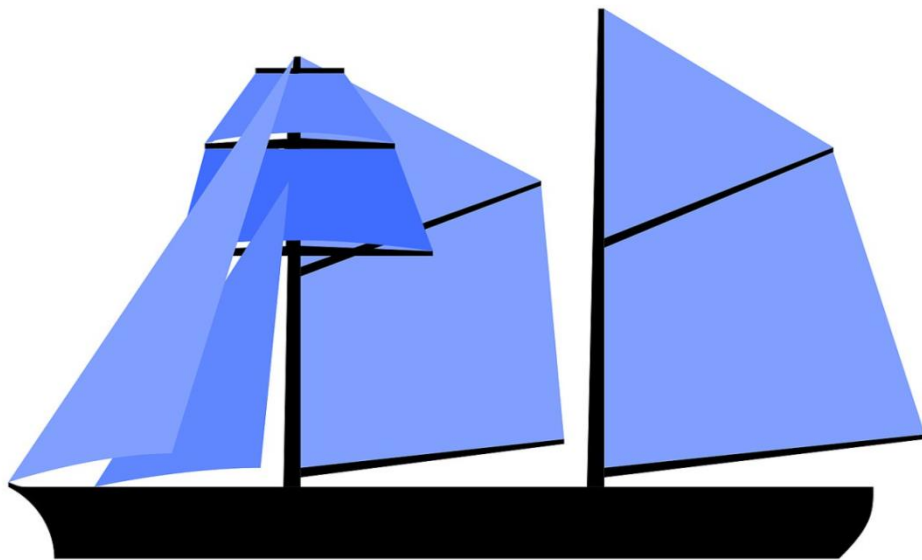


**Welsh Wreck Web Research Project
(North Cardigan Bay)
On-line research into the Sinking of:
Maude (Schooner)**



**Report compiled by:
Gareth J.S. Davies**

Report Title:

**Welsh Wreck Web Research Project
(North Cardigan Bay)
On-line research into the Sinking of:
*Maude (Schooner)***

Compiled by:

Gareth J.S. Davies
Manila, Philippines
Email/Skype: davies_j_gareth@hotmail.com

On behalf of:

Nautical Archaeology Society
Fort Cumberland
Fort Cumberland Road
Portsmouth
PO4 9LD
Tel: +44 (0)23 9281 8419
E-mail: nas@nauticalarchaeologysociety.org
Web Site: www.nauticalarchaeologysociety.org

Managed by:

Malvern Archaeological Diving Unit
17 Hornyold Road
Malvern
Worcestershire
WR14 1QQ
Tel: +44 (0)1684 574774
E-mail: MADUdiving@gmail.com
Web Site: www.madu.org.uk

Date:

Oct 2021

Report Ref:

Leave blank

1.0 Abstract

Since 2001 the Malvern Archaeological Diving Unit (MADU) has developed a database of vessels known to have wrecked around the coast of Wales.

This project is to discover information relating to the history of the schooner Maude built by Ferguson & Baird at Connah's Quay Wales in 1894.

The Maude was a cargo schooner which sailed between ports in N, S Wales, N.W, S.W, S, E England, Ireland, Scotland and occasionally to Europe. Cargoes carried included raw materials.

On May 7th 1917, the Maude sailing from Padstow in Cornwall to Manchester with a cargo of pipe clay was stopped by German U-boat UC-65 approximately 8 miles SW of Bardsey Island. The crew was offloaded and the Maude scuttled.

The research has been conducted from information gathered from MADU and on-line sites as I do not reside in the U.K.

2.1 Tables of Contents Page No.

1.0 Abstract	3
2.0 Index	4
2.1 Table of Contents	4
2.2 List of Tables	4
2.3 List of Figures	4
2.4 Contributors	4
2.5 Abbreviations	5
2.6 Appendices	5
3.0 Introduction	6
4.0 Background	7
5.0 Research Methodology	8
6.0 Results	9
7.0 Analysis	10
8.0 Conclusions & Recommendations	15
9.0 References	16
9.1 Online WebPages	16
9.2 Personal Correspondences	16
9.3 Publications	16

2.2 List of Tables

Table 1. Extract from MADU Master Wrecksite Database	7
Table 2. Maude (Schooner) Specification and History	9
Table 3. UC-65 (U-boat) Specification and History	13
Table 4. C-15 (Submarine) Specification and History	14

2.3 List of Figures

Front Page: Diagram of 2 masted Schooner	1
Fig 1: Location of the Scuttling of the Maude, May 07 1917	7

2.4 Contributors

Ian Cundy MADU Archaeological Diving Unit,
 Nautical Archaeology Society (Regional co-ordinator for Wales)

2.5 Abbreviations

MADU	Malvern Archaeological Diving Unit
MNL	Mercantile Navy List
LR	Lloyds' Registry

2.6 Appendices

Appendix A:	Appropriation Book 1895, Maude -----	17
Appendix B:	Mercantile Navy Listing 1895, Maude Chester -----	17
Appendix C:	For Sale Advertisement March 1897 -----	17
Appendix D:	Grounding off Sandown Castle, April 1899 -----	18
Appendix E:	Grounding off Brigg's Reef, Belfast, Feb 1900 -----	18
Appendix F:	Allocation of Signal Letters, July 1904 -----	18
Appendix G:	Collision in River Mersey, Sep 1904 -----	19
Appendix H:	Collided in River Thames, Jan 1908 -----	19
Appendix I:	Accident at Sea, Dec 1908 -----	19
Appendix J:	Mercantile Navy Listing 1915, Maude Bideford Devon -----	19
Appendix K:	UC Class Mine laying U-Boat 1917 -----	20
Appendix L:	C-15 at Sea -----	20
Appendix M:	C Class British Submarines -----	21
Appendix N:	Location of UC-65 Wreckage, English Channel -----	21

3.0 Introduction

The schooner Maude was chosen as:

- it covered a period of sea history from late 19th century through to WW1.
- it was a similar ship and time to other ships I had researched from the MADU Wreck list.
- I live overseas online information would be my priority research tool and similar to my previous research a ship from this period should be reasonably well documented online.

The following topics form the basis of the research:

- What were the vessel's specifications?
- What historical information is available relating to the vessel?
- Has any salvage, etc. been carried out?
- Have there been any previous reports produced relating to the vessel?

4.0 Background

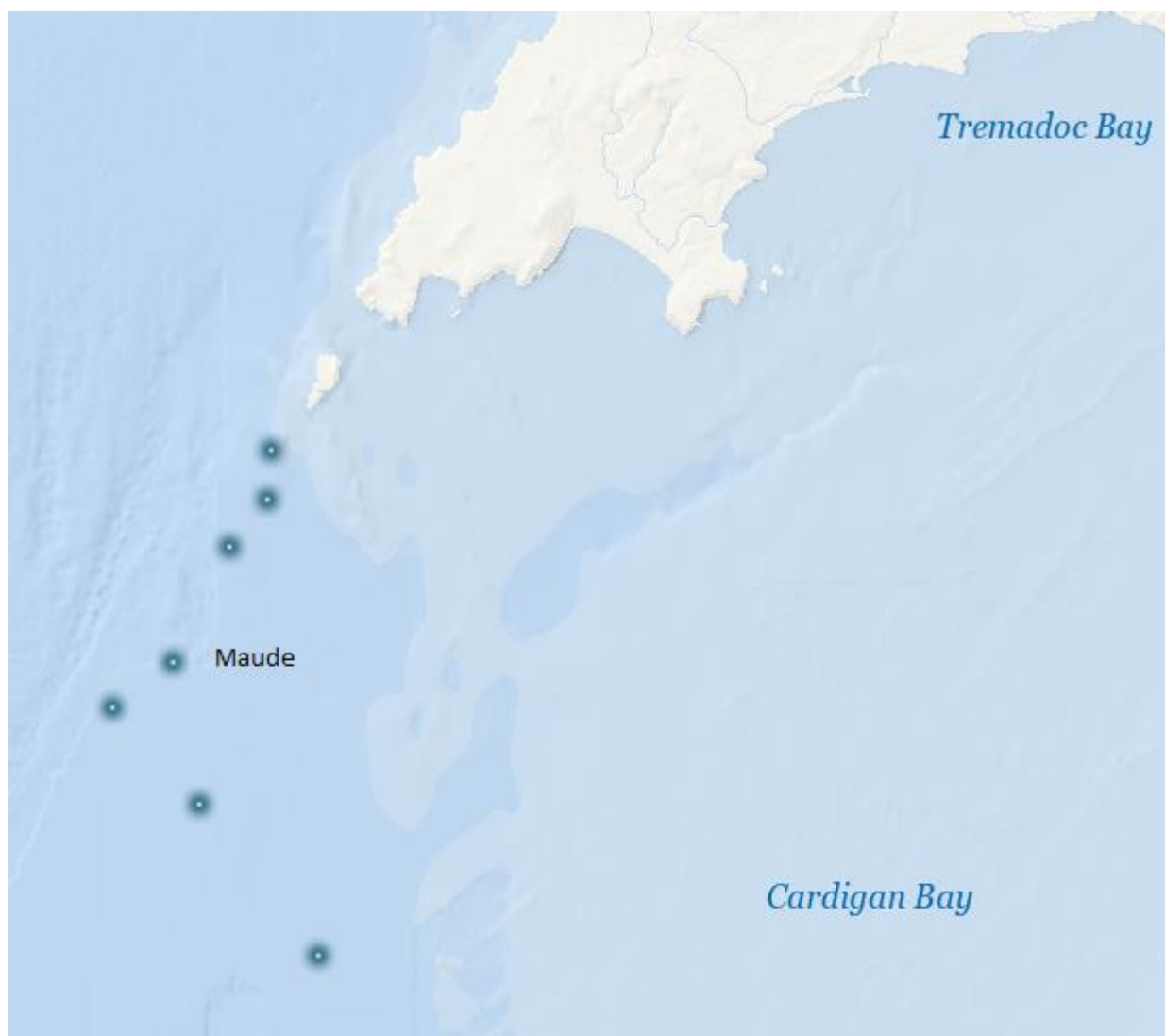
Prior to starting this research the only known data available to me was from the MADU Master Wrecksite Database Listing (Table 1) supplied by Mr Ian Cundy.

Table 1: Extract from MADU Master Wrecksite Database

MADU Ref. No.	Date Wrecked	Name	Location 1	Location 2	Details	Vessel Type	Matls	Ref.
407	07/05/1917	Maude	Caernarfonshire	Llyn Pen, Bardsey Island, 8M SW		Sailing Vessel	wood	rl

On May 7th 1917, the Maude sailing from Padstow in Cornwall to Manchester a cargo of pipe clay was stopped by German U-boat UC-65 approximately 8 miles SW of Bardsey Island. The crew was offloaded and the Maude scuttled.

Fig 1: Location of the Scuttling of the Maude, May 07 1917



5.0 Research Methodology

Computer System

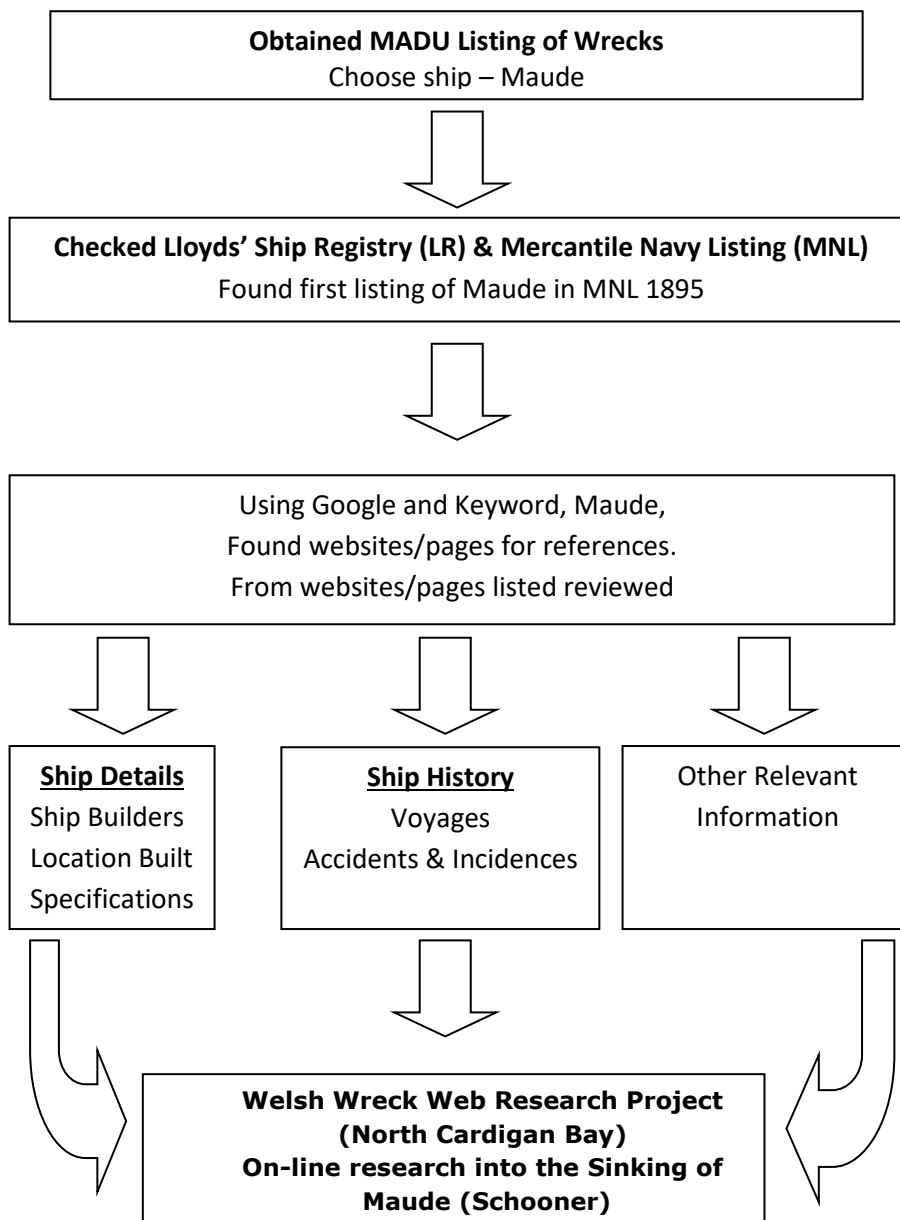
Acer Desktop 64 bit OS; 8 GB Memory, wireless connection.

Windows 10Pro

Microsoft Office 2007

Search engines used: Google Chrome

Methodology



See Section 9 for list of websites viewed

6.0 Results

Table 2: Maude (Schooner) Specification and History

Vessel	Name/s	Maude
	Type	Sailing Ship – Schooner General Cargo
Built	Date	Launched: N/A
		Delivered: Apr 1894
		Cost: N/A
	Builder	Ferguson & Baird Connah's Quay, Wales; Yard #47
Construction	Materials	Wood
	Decks	1
	Bulkheads	N/A
	Others	N/A
Propulsion	Type	Sail
	Details	2 masts
Dimensions	Length	87 ft 0 in
	Beam	21 ft 3 in
	Draught	8 ft 8 in
Tonnage	Gross	93 grt
	Net	72 nrt
Owners	1894	Frederick L Hancock, Hawarden, Flint, Wales
	1904	Nicholas H. Tregaskes, Bude, Cornwall
	1915	James H. Lamey, New Ferry, Cheshire
Registry	Port	1894: Chester; 1915: Bideford Devon
	Flag	GBR
	Number	96285
	Code	V.W.M.B.
History	Routes	N, S Wales, N.W, S.W, S, E England, Ireland, Scotland and occasionally to Europe
	Cargo	Raw materials
Sunk	Date	07/05/1917
	From	Padstow, Cornwall
	To	Manchester
	Captain	N/A
	Crew	N/A
	Cargo	China clay
	Location	52.40N 04:58W 8 miles SW of Bardsey Island
	Cause	Stopped and scuttled by UC65
	Loss of life	0
	Outcome	Sunk

7.0 Analysis

- The schooner Maude was built by Ferguson & Baird at Connah's Quay Wales in 1894 and registered at Chester Cheshire (Appendix A, B).
- The Maude sailed between ports in N, S Wales, N.W, S.W, S, E England, Ireland, Scotland and occasionally to Europe. Cargoes carried were raw materials and probably food products.
- In March 1897 the Maude was put up for sale (Appendix C).
- May 07th 1917, the Maude was stopped 8 miles SW of Bardsey Island by U-boat UC-65 and scuttled.

From newspapers the Maude was recorded:

1894

Oct 22: Arrived Swansea Wales from Chester Cheshire.
Dec 06: Arrived London from Swansea Wales.

1896

Feb 25: Arrived Britonferry from Chester Cheshire.
Mar 13-Apr 06: Sailed Britonferry Wales for London.
Apr 14: Sailed London for Maryport Cumbria.
Jun 09: Sailed London for Lancaster Lancashire.
Jul 05: Sailed Lancaster Lancashire for River Dee Wales.

1897

Mar 04: Advertised for Sale (Appendix).
Apr 21: Sailed Connah's Quay Wales for Dublin (Vickers).
Jul 02: Arrived Swansea Wales from Chester Cheshire (Vickers, 72 tons).
Oct 25: Arrived Swansea Wales from Chester Cheshire (Vickers).
Nov 17: Arrived Holyhead Anglesey from Garston Liverpool (Vickers).

1898

Jan 24: Arrived Swansea Wales from Chester Cheshire (72 tons).
Feb 22: Sailed London for Youghal Ireland (Vickers).
Aug 10: Arrived Lamlash Scotland (Chester).
Oct 12: Arrived Cardiff from Poole Dorset (72 tons), pitwood.

1899

Feb 16: Arrived Falmouth Cornwall from Cardiff.
Apr 24: Grounded at Sandown Castle Kent sailing London for Swansea Wales (Appendix D).
May 06: Arrived Swansea Wales from London (Vickers).
Jun 04: Arrived Yarmouth I.O.W. from Swansea Wales.

1900

Feb 02: Ran ashore on Briggs Reef Belfast from Chester Cheshire, cargo bricks (Appendix E).
Mar 06: Sailed Dublin for Bangor Wales.
May 04: Sailed Runcorn Cheshire for Waterford Ireland.
Jun 22: Sailed Connah's Quay Wales for Belfast (Tuffs).
Sep 25: Arrived Connah's Quay Wales from Dublin (Tuffs).
Sep 28: Sailed Connah's Quay Wales for Belfast (Tuffs).
Oct 22: Sailed Connah's Quay Wales for Belfast (Tuffs).
Nov 19: Arrived Waterford Ireland from Belfast (Tuffs).
Dec 07-13: Sailed Waterford Ireland for Runcorn Cheshire (Tuffs).

1901

Feb 03: Arrived Liverpool from Dublin (Tuffs).
 Feb 17: Arrived Connah's Quay Wales from Liverpool (Tuffs).
 Feb 23: Sailed Connah's Quay Wales for Belfast (Tuffs).
 Apr 01: Arrived Connah's Quay from Dublin for Saltney Wales (Tuffs).
 Jul 15: Arrived Connah's Quay Wales from Waterford Ireland (Tuffs).
 Aug 09: Sailed Swansea Wales for Rye E. Sussex (Tuffs).
 Sep 12: Arrived Runcorn Cheshire from Rye E. Sussex (Tuffs).
 Sep 18: Sailed Runcorn Cheshire for Connah's Quay Wales (Tuffs).
 Oct 04: Arrived Belfast from Chester (Tuffs).
 Dec 11: Arrived Connah's Quay Wales from Belfast (Tuffs).

1903

Aug 25: Arrived Bude Cornwall from Runcorn Cheshire (Stevens).
 Dec 30: Arrived London from Swansea Wales (Stevens).

1904

Jan 06-26: Sailed London for Newry N. Ireland (Stevens).
 Feb 29: Arrived Bridgwater Somerset from Connah's Quay Wales (Stevens).
 Apr 14: Sailed Newport Wales for Ballinacurra Ireland (Stevens).
 May 30: Arrived Bridgwater from Ballinacurra Ireland (Stevens).
 Jul 01: Sailed Runcorn Cheshire for Bude Cornwall (Stevens).
 Jul 23: Signal Letters Allocated VWMB (Appendix F).
 Aug 12: Sailed Dublin for Chester Cheshire.
 Sep 21: Collided in River Mersey from Bideford Devon, cargo pipe clay (Appendix G).
 Sep 29: Sailed Runcorn Cheshire for Bideford Devon.
 Nov 19: Arrived Padstow Cornwall from Liverpool (Stevens).

1905

Jan 13: Sailed Runcorn Cheshire for Bideford Devon.
 Mar 07: Sailed London for Bideford (Stevens).
 Apr 20: Arrived Par Cornwall from Looe Cornwall (Stevens).
 Apr 29: Sailed Par Cornwall for London (Stevens).
 Nov 22: Sailed London for Topsham Devon (Stevens).
 Dec 13: Arrived Cardiff from Topsham Devon (Stevens).

1906

Jan 10: Sailed London for Bideford Devon (Stevens).
 Feb 10: Sailed Saundersfoot Wales for Ipswich Suffolk (Stevens).
 Mar 13: Arrived Cowes I.O.W from Ipswich Suffolk for Cork Ireland (Stevens).
 Apr 14: Arrived Bristol from Cork Ireland.
 May 15: Sailed Saundersfoot Wales for Faversham Kent (Stevens).
 Jul 11-23: Sailed London for Inverness Scotland (Stevens).
 Aug 19: Sailed Methil Scotland for Topsham Devon (Stevens).
 Sep 06: Arrived Teignmouth Devon from Exmouth Devon (Stevens).
 Sep 13: Sailed Teignmouth Devon for Terneuze Holland and Ghent Belgium (Stevens).
 Oct 03: Sailed Ghent Belgium for Tralee Ireland (Stevens).
 Nov 19: Sailed Saundersfoot Wales for Ipswich Suffolk (Stevens).
 Dec 10: Sailed Ipswich Suffolk for Bideford Devon (Stevens).

1907

Jan 11: Arrived Ipswich Suffolk from Saundersfoot Wales (Stevens).
 Jan 26: Sailed Ipswich Suffolk for Haverfordwest Wales (Stevens).
 Mar 22: Sailed Ipswich Suffolk for Haverfordwest Wales (Stevens).
 May 08: Arrived Boston Lincolnshire from Porthmadog Wales (Stevens).
 May 22: Sailed Boston Lincolnshire for Liverpool (Stevens).

Jul 07: Arrived Waterford Ireland from Newport Wales (Stevens).
 Jul 11-18: Sailed Waterford Ireland for Porthmadog Wales (Stevens).
 Jul 29: Arrived Cork Ireland from Porthmadog Wales (Stevens).
 Oct 24-Nov 03: Sailed London for Newport Wales (Stevens).
 Nov 12: Sailed Newport Wales for Par Cornwall (Stevens).
 Sec 02: Sailed Par Cornwall for London (Stevens).

1908

Jan 06: Anchored at Milford Haven Wales after collision (Appendix H).
 Jan 28: Arrived Ipswich from Saundersfoot Wales, cargo coal (Stevens).
 Feb 10: Sailed Ipswich Suffolk for Haverfordwest Wales, cargo manure (Stevens).
 Jul 09: Arrived London from Greenock Scotland (Stevens).
 Jul 18: Sailed London for Kirkcudbright Scotland (Stevens).
 Aug 18: Sailed Whitehaven Cumbria for Skerries Ireland (Stevens).
 Sep 06: Arrived Caernarfon Wales from Skerries Ireland (Stevens).
 Nov 03: Arrived London from Newcastle (Stevens).
 Nov 04: Sailed London for Hayle Cornwall (Stevens).
 Dec 18: Arrived Ipswich Suffolk from Mistley Essex, light (Stevens).
 Dec 23: Sailed Ipswich Suffolk for Haverfordwest Wales, cargo manure (Stevens).
 Dec 29: Accident sailing Ipswich Suffolk for Milford Haven Wales (Appendix I).

1909

Mar 16-Apr 02: Sailed London for St Ives Cornwall (Stevens, Chester).
 May 05: Arrived London from Greenock Scotland (Stevens).
 Jul 06: Sailed London for Dumfries Scotland (Stevens).
 Aug 26: Arrived London from Greenock Scotland (Stevens).
 Sep 01: Sailed London for Oban Scotland (Stevens).
 Nov 01: Arrived London from Greenock Scotland (Stevens).
 Nov 11-25: Sailed London for Bridgwater Somerset (Stevens).
 Dec 12: Sailed Bridgwater Somerset for Dublin (Stevens).
 Dec 22: Sailed Newport for Bideford Devon (Stevens).

1910

Feb 01: Arrived Newport Wales from Bideford Devon (Stevens).
 Feb 03: Sailed Newport Wales for Bideford Devon (Stevens).
 Feb 24: Arrived Newport Wales from Porthmadog Wales (Stephens).
 Apr 05: Sailed London for Maryport Cumbria (Stephens).
 Jun 15: Arrived London from Greenock Scotland (Stevens).
 Jun 20: Sailed London for Annan Scotland (Stephens).
 Jun 25: passed west Horse Sand Fort Hampshire.
 Nov 07: Arrived London from Greenock Scotland (Stevens).

1911

May 20: Arrived Belfast from London, cargo cement and powder (Stevens).

1912

Aug 20: Arrived London from Greenock Scotland (Stevens).
 Aug 28: Sailed London for Kirkcudbright Scotland (Stevens).

1913

Mar 04: Arrived London from Greenock Scotland (Stevens).

1915

Jan Registered at Bideford Devon, (Appendix J).

1917

May 07: Stopped/scuttled by U-boat UC-65 (Appendix K), 8 miles SW of Bardsey Island, Wales.

Table 3: UC-65 (U-boat) Specification and History

Vessel	Name/s	UC-65
	Type	UC 11 submarine
Built	Date	Ordered: Jan 12 th 1916
		Launched: July 8 th 1916
		Delivered: Nov 7 th 1916
		Cost: N/A
	Material	Steel
	Builder	Blohm & Voss, Hamburg; Yard #281
	Owner	Imperial German Navy – Kaiserliche Marine
Dimensions	Length	50.35 m
	Beam	5.22 m
	Draught	3.63 m
Tonnage	Gross	427t (surface); 508t (submerged)
Propulsion	Type	2 x propeller shafts
Engine	Details	2x6 cyl, 4-stroke diesel, 600PS 400 kW; 590 shp) 2 Siemens-Schuckert electric motors, 620 PS 460 kW; 610 shp HP: 500
	Speed	12 knts (surface); 7.4 knts (submerged)
	Range	10,420 nat miles at 7 knts surface; 52 nat miles at 4 knts submerged
	Depth	50m
Armaments		6 × 100 cm (39.4 in) mine tubes 18 × UC 200 mines 3 × 50 cm (19.7 in) torpedo tubes (2 bow/external; one stern) 7 × torpedoes 1 × 8.8 cm (3.5 in) Uk L/30 deck gun
Operations	Captains	Kptlt. Otto Steinbrinck, 10 November 1916 – 31 July 1917 Kptlt. Max Viebeg, 1 August – 3 September 1917 Kptlt. Claus Lafrenz, 4 September – 3 November 1917
	Crew	27
	Patrols	11
	Sinkings/ Damaged	105 merchant ships sunk 116,218 grt 11 merchant ships damaged 64,712 grt 1 warship sunk 11,000 grt 1 warship damaged 850 grt
Wrecking	Date	3/11/1917
	Location	50°31'N 00°27'E.
	Cause	Torpedoed by HM SubC15
	Loss of life	22 dead and 5 survivors
	Outcome	Wreck. UC-65 lies at a maximum depth of 50m

- On 1 February 1917 Germany declared a renewal of 'unrestricted submarine warfare' in a last ferocious attempt to force an end to the First World War.
- Almost immediately, major losses of merchant ships occurred in Welsh waters. Thirteen ships were sunk off Bardsey Island and the Pembrokeshire coast in that month alone – all by the U-boat, UC-65, captained by Otto Steinbrinck, one of the most successful German U-boat commanders of the war.
- UC-65 also patrolled in the North Sea, and coast of France. On Nov 3 1917, at 16h45, HM Sub C-15 (Appendix L, M) fired two torpedoes and obtained one hit on the stern of UC-65, which sank immediately (Appendix N). Only the five men on the bridge (incl. Commander Lafrenz) survived, the rest of the crew, 22 in total, were killed.

Table 4: C-15 (Submarine) Specification and History

Vessel	Name/s	HMS C15
	Type	C-class submarine
Built	Date	Laid Down: Dec 7 th 1906
		Launched: Jan 21 th 1908
		Delivered: Apr 1 st 1908
		Cost: N/A
	Material	Steel
	Builder	Vickers, Barrow Cumbria
	Owner	British Royal Navy
Dimensions	Length	142 ft 2.5in
	Beam	13 ft 7in
	Draught	11 ft 2in
Tonnage	Gross	287t (surface); 316t (submerged)
Propulsion	Type	1 x electric motor
Engine	Details	1x16 cyl Vickers petrol engine 600 bhp, 450kW 300hp, 220 kW electric
	Speed	12 knts (surface); 7 knts (submerged)
	Range	910 nat miles at 12 knts surface; 52 nat miles at 4 knts submerged
	Depth	100 ft
	Crew	2 x officers, 14 crew
Armaments		2 × 18 in (450 mm) bow torpedo tubes 800 yards @ 26.5 knots, 118 lbs. wet gun-cotton warhead 2 reloads
	Outcome	Scrapped Feb 1922

8.0 Conclusions & Recommendations

The project took approximately 3 working days with 2 day of that time spent on on-line research.

Having read the report, sufficient information has been collated to compile a comprehensive history of the schooner Maude.

At the start of the research a problem with the name was observed showing in some information as Mande and in others Maude. However after reviewing various webpages the name Maude was found to be correct.

The schooner Maude was an active coastal vessel sailing to ports around the entire United Kingdom, Ireland and occasionally Europe. Cargoes appear to have consisted of raw material and probably food products.

Many different WebPages were viewed ranging from large organisations to smaller WebPages such as local history or people with a given interest in a subject (See Section 9.1). The quantity and quality of the WebPages appeared depended on the targeted audiences and the amount of work undertaken. Some of the historical and interest in a subject WebPages were extremely useful. Newspaper archives were also very helpful in giving an overall picture of the operation of the ship and filling in information gaps.

Much of the data collated between websites checked out with some discrepancies observed.

A few WebPages viewed led to pay to view pages. However in most cases the information was obtained from other sources.

From the research conducted, setting a goal and how to reach that goal should be mapped out first. Careful use of specific words in search engines is very important. Due to the name a more specific search through archived newspapers was made using specific newspapers to view e.g. Lloyd's List. This vastly reduced the number of articles but keep the search focused.

9.0 References

9.1 Online WebPages

The following websites and pages have been used in the compilation of this report:

<https://www.britishnewspaperarchive.co.uk/>
Keyword: Maude

<https://coflein.gov.uk/en/site/271660?term=Maude>

<https://www.crewlist.org.uk/data/vesselsalpha?shipsearch=Maude&SearchType=Exact&submit=search>

<https://www.crewlist.org.uk/data/appropriation/96285>

<https://www.crewlist.org.uk/data/viewimages?&name=Maude&steamsail=Sail&submit=Enter&year=1895>

http://shippingandshipbuilding.uk/view.php?official_number=&imo=&builder=&builder_eng=&year_built=1894&launch_after=&launch_before=&role=&type_ref1=&propulsion=&owner=&port=&flag=&disposal=&lost=&ref=217507&vessel=MAUDE

<https://www.google.co.uk/>

<https://newspapers.library.wales/>

<https://rcahmw.gov.uk/one-hundred-years-ago-today-2/>

<https://uboat.net/wwi/>

https://uboat.net/wwi/ships_hit/4034.html

<https://uboat.net/wwi/types/?type=U+63>

<https://uboatproject.wales/>

<https://uboatproject.wales/test-esri-map/>

https://en.wikipedia.org/wiki/HMS_C15

<https://www.wrecksite.eu/wreck.aspx?157245>

https://en.wikipedia.org/wiki/SM_UC-65

9.2 Personal Correspondences

I would like to thank Mr Ian Cundy for supplying the initial information and other information with regards to the research project.

9.3 Publications

Larn, R. & Larn, B., 2000, Shipwreck Index of the British Isles: Volume 5 – West Coast and Wales. Lloyd's Register of Shipping.

Appendices:

Appendix A: Appropriation Book 1895, Maude

Official Number.	Name of Ship.	Tonnage.	Whether Steam or Sailing Ship.	Port of Registry.	Date of Registry.	Occasion of Appropriation.	Date of Appropriation.
9628	Ormonde	14	Steam	"	13/90	25 Mar. 90	
1	James	54	Sailing	"	4/90	20 Apl.	
2	Bend'Or	16	Steam	"	2/91		
3	Grange	771	"	"	3/91		
4	Hilda	91	Sailing	"	2/92		
5	Maude	72	"	"	1/92		
6	Letty	57	Sailing	Liverpool	18 Mar. 89	First Registry	18 Mar. 89

Appendix B: Mercantile Navy Listing 1895, Maude Chester

Official No.	Name of Ship and Port of Registry.	Rig.	Where built.	When built.	International Code Signal (if any).	Registered Tonnage.	Owner, or Part Owner, and Manager (if recorded). X Signifies <i>Managing Owner</i> Italics signify <i>Manager</i> .
92951	Maud of Scotland, Lowestoft	Dy.	Bideford, Devon.	1836	..	64	X Francis Pearce, 156, Denmark Rd., Lowestoft.
96285	Maude, Chester	Sr.	Connah's Quay	1894	..	72	X Frederick Leigh Hancock, Hawarden, Flint.
28692	*Maude, Cowes	Yl.	Cowes	1860	Q.B.M.S	41	Joseph Gordon, Marsala, Trapani, Sicily.
78781	Maude, Liverpool	Bk.	Liverpool	1878	R.M.H.K	1077	X John Evans, Brunswick Dock, Liverpool.
101407	Maude, Nassau, N.P.	Sp.	New Providence Bahamas	1891	..	4	Moses N. Deveaux, Rum Cay, Bahamas.
62010	Maude, Runcom	Sr.	Widnes	1869	..	67	X Robert Hughes, 5, South Penrallt, Carnarvon.
94055	Maude Green, Lowestoft	K.	Burton Stather	1887	..	51	X George Batty, 140, Raglan St., Lowestoft.

Appendix C: For Sale Advertisement March 1897

FULL LIST of STEAMERS and SAILERS of all sizes will be forwarded on application.

THE very superior Schooner DUCHESS,
of Chester, 150 tons burthen on easy draught; built at Connah's Quay, 1878, of English oak; 12 A 1; continued 3 A 1 1890; always been well maintained; now in capital order and well found; smart model; sails fast, and is immensely strong; 86 x 22.6 x 10.4. Also,

The superior and handy Schooner **MAUDE,** of Chester, 160 tons burthen on 9.3 draught; built 1891; 12 A 1; good model; sails well; little or no ballast; 85.8 x 21 x 8.6. Apply

W. PARKES and Co.,
Shipping Salesmen,
7, Manchester Buildings, Liverpool.

LARGE SELECTION of COASTING VESSELS of all sizes and descriptions always on hand for SALE.

Appendix D: Grounding off Sandown Castle, April 1899

MAUDE.—*Deal*, April 24, 8 23 a.m.—Schooner **Maude**, of Chester, Captain Vickers, from London for Swansea, laden with scrap iron, stranded off Sandown Castle at 4 10 this morning at low water. She floated with the tide, and is now anchored in the Downs without assistance, and apparently without damage.

Appendix E: Grounding off Brigg’s Reef, Belfast, Feb 1900

MAUDE.—*Groomsport*, Feb. 2, 9 20 a.m.—Schooner **Maude**, of Chester, ashore on Brigg’s Reef. Crew still on board. Probably get off. Further particulars will follow.

MAUDE.—*Belfast*, Feb. 2, 12 13 p.m.—Telegram from coast says schooner **Maude**, from Chester for Belfast, with bricks, ashore on Brigg’s Reef, badly damaged.

MAUDE.—*Groomsport*, Feb. 3, 11 40 a.m.—Schooner **Maude** 96,285, previously reported on Brigg’s Reef, has got off ; discharged part cargo.

Appendix F: Allocation of Signal Letters, July 1904

SIGNAL LETTERS ALLOTTED.

The following International Code Signals have been allotted by me to the undermentioned Vessels during the week ended July 23, 1904 :—

Signal Letters.	Name of Ship and Port of Registry, &c.	Tons.	Horse Power.
KPMC	Norseman, of London ...	790	250
	(late Mirror)		
VTSL	Whateley Hall, of Cardiff ...	2380	313
VTSR	G. Player, of Teignmouth...	242	82
VTWB	Shira, of Cowes ...	14	—
VTWF	Vagrant, of Newcastle ...	117	150
VTWG	Port Kingston, of Bristol ...	3841	1452
VWMB	Maude , of Chester ...	72	—
VWNT	Endeavour, of London ...	125	55
WDHR	Edendale, of Singapore ...	718	108
WHJC	Rescue, of Gibraltar ...	102	180

Appendix G: Collision in River Mersey, Sep 1904

MAUDE.—*Manchester*, Sept. 21.—The **Maude**, of Chester, from Bideford, with pipeclay, collided Sept 13 in Crosby Channel with an unknown steamer and had bowsprit carried away and head gear and jib damaged.

Appendix H: Collided in River Thames, Jan 1908

MAUDE.—*St. Ann's Head*, Jan. 6, 3 5 p.m.—Schooner **Maude**, of Chester, with starboard rail carried away, reports collision in River Thames. Now at anchor in Dale Roads.

————— *Milford Haven*, Jan. 6, 4 5 p.m.—Schooner **Maude**, of Chester, is anchored in Dale Roads in this Haven, with starboard rail carried away through having been in collision.

Appendix I: Accident at Sea, Dec 1908

MAUDE.—*Milford Haven*, Dec. 31, 5 30 p.m.—Schooner **Maude**, of Chester, Ipswich for Milford Haven (superphosphate), on 29th inst. shipped sea which filled deck up to rails; had to knock away bulwarks and throw overboard warps, square sail, and running gear to clear ship, foresail and foretopsail cut away and foreyard carried away.

Appendix J: Mercantile Navy Listing 1915, Maude Bideford Devon

Official No.	Name of Ship and Port of Registry.	Rig.	Where built.	When built.	International Code Signal (if any).	Registered Tonnage.	Owner, or Part Owner, and Manager (if recorded). × Signifies <i>Managing Owner</i> . Italics signify <i>Manager</i> .
62010	Maude, Bideford . . .	K.	Widnes . . .	1869	..	59	× Joseph Knight, The Docks, Lydney, Glos.
96285	Maude, Bideford . . .	Sr.	Connah's Quay.	1894	V.W.M.B	72	× James H. Lamey, 1, Esplanade, New Ferry, Cheshire.
101407	Maude, Nassau, N.P. . .	Sp.	New Providence, Bahamas.	1891	..	4	Moses N. Deveaux, Rum Cay, Bahamas.

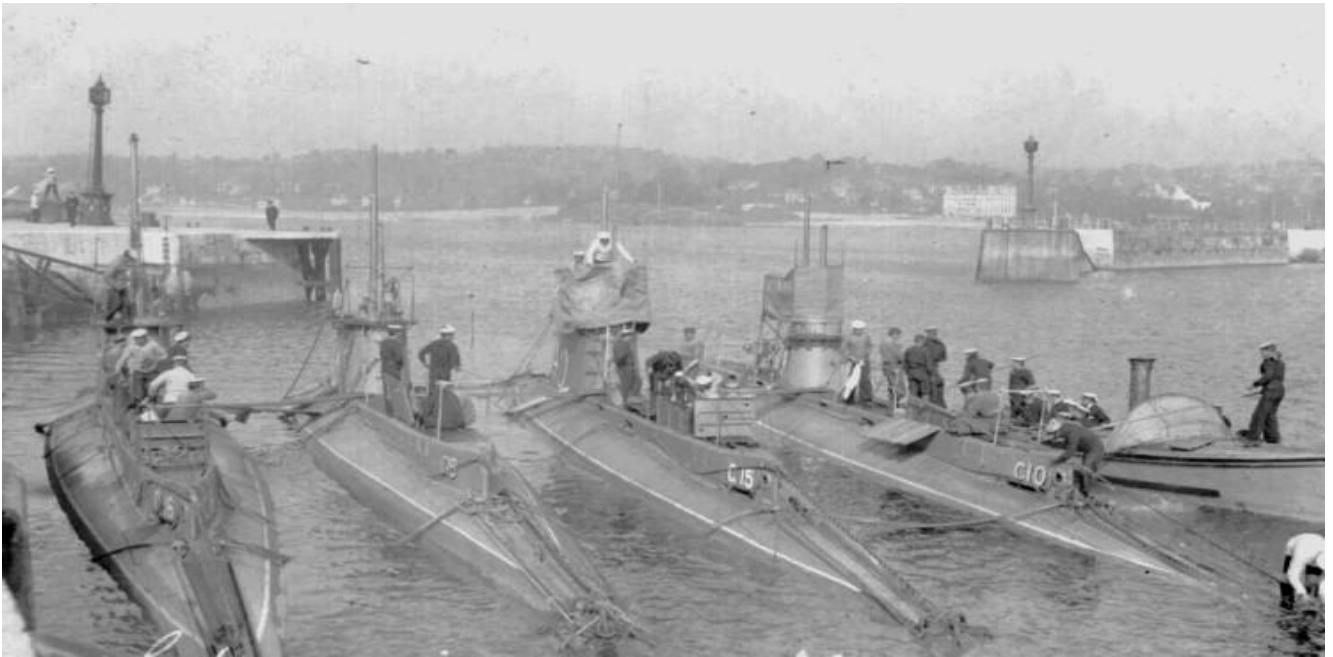
Appendix K: UC Class Mine laying U-Boat 1917



Appendix L: C-15 at Sea



Appendix M: C Class British Submarines



From left to right; HMS C-16, HMS C-18, HMS C-15 and HMS C-10 at Torquay, England.

Appendix N: Location of UC-65 Wreckage, English Channel

