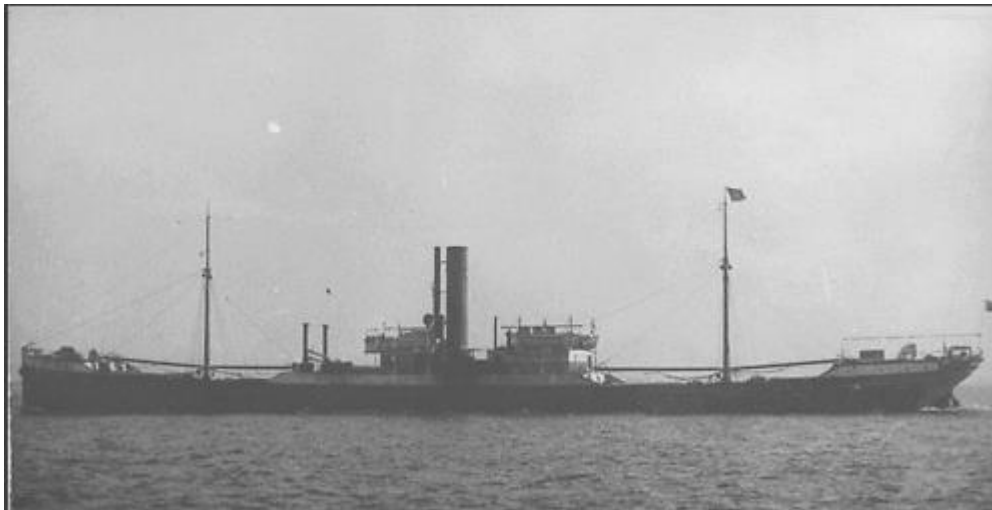


**Welsh Wreck Web Research Project
(North Cardigan Bay)
On-line research into the Sinking of:
SS Snowdon Range (Steamship)**



SS Snowdon Range

**Report compiled by:
Gareth J.S. Davies**

Report Title: **Welsh Wreck Web Research Project
(North Cardigan Bay)
On-line research into the Sinking of:
SS Snowdon Range (Steamship)**

Compiled by: **Gareth J.S. Davies**
Manila, Philippines
Email/Skype: davies_j_gareth@hotmail.com

On behalf of: **Nautical Archaeology Society**
Fort Cumberland
Fort Cumberland Road
Portsmouth
PO4 9LD
Tel: +44 (0)23 9281 8419
E-mail: nas@nauticalarchaeologysociety.org
Web Site: www.nauticalarchaeologysociety.org

Managed by: **Malvern Archaeological Diving Unit**
17 Hornyold Road
Malvern
Worcestershire
WR14 1QQ
Tel: +44 (0)1684 574774
E-mail: MADUdiving@gmail.com
Web Site: www.madu.org.uk

Date: **March 2021**

Report Ref: ***Leave blank***

1.0 Abstract

Since 2001 the Malvern Archaeological Diving Unit (MADU) has developed a database of vessels known to have wrecked around the coast of Wales.

This project is to discover information relating to the history of the steamship SS Snowdon Range built at Scotts' Shipbuilding & Engineering Co. Ltd. Greenock in 1906.

On March 28 1917, the SS Snowdon Range sailing from Philadelphia to Liverpool with a cargo of gunpowder and food supplies was torpedoed by the German U-boat UC-65 approximately 25 miles WSW of Bardsey Island. The crew was offloaded and after provisions and brass were removed by the U-boat crew the SS Snowdon Range was scuttled with explosives and gun fire.

The research has been conducted from information gathered from MADU and on-line sites as I do not reside in the U.K.

2.1	Tables of Contents	Page No.
1.0	Abstract -----	3
2.0	Index -----	4
2.1	Table of Contents -----	4
2.2	List of Tables -----	4
2.3	List of Figures -----	4
2.4	Contributors -----	4
2.5	Abbreviations -----	5
2.6	Appendices -----	5
3.0	Introduction -----	6
4.0	Background -----	7
5.0	Research Methodology -----	8
6.0	Results -----	9
7.0	Analysis -----	10
8.0	Conclusions & Recommendations -----	15
9.0	References -----	16
9.1	Online WebPages -----	16
9.2	Personal Correspondences -----	16

2.2 List of Tables

Table 1.	Extract from MADU Master Wrecksite Database -----	7
Table 2.	SS Dalhanna (Steamship) Specification and History -----	9
Table 3.	UC-65 (U-boat) Specification and History -----	13
Table 4.	C-15 (Submarine) Specification and History -----	14

2.3 List of Figures

Front Page:	SS Snowdon Range -----	1
Fig 1:	Reported Location of the Sinking of the SS Snowdon Range -----	7

2.4 Contributors

Ian Cundy MADU Archaeological Diving Unit,
 Nautical Archaeology Society (Regional co-ordinator for Wales)

2.5 Abbreviations

MADU	Malvern Archaeological Diving Unit
MNL	Mercantile Navy List
LR	Lloyds' Registry

2.6 Appendices

Appendix A:	Launch Announcement Sept 03 1906, SS Dalhanna -----	17
Appendix B:	Creation of Steamship Dalhanna Company Oct 03 1906 -----	17
Appendix C:	Appropriation Book 1907, SS Dalhanna -----	18
Appendix D:	Mercantile Navy Listing 1907, SS Dalhanna -----	18
Appendix E:	Appendix E: Lloyd's Register 1907, SS Dalhanna -----	18
Appendix F:	Repairs required after survey, Oct 1908 -----	19
Appendix G:	Reported change of name to SS Den of Kelly, Mar 1915 -----	19
Appendix H:	Reported change of name to SS Snowdon Range, Oct 1915 -----	19
Appendix I:	Court Case against crew members of Den of Kelly Dec 1915 -----	20
Appendix J:	Advert for Fortnightly service Glasgow to Philadelphia -----	20
Appendix K:	UC Class Mine laying U-Boat 1917 -----	21
Appendix L:	Reported Sinking of SS Snowdon Range, Mar 28 1917 -----	21
Appendix M:	Lloyd's Casualty Listing 1917, SS Snowdon Range -----	22
Appendix N:	C-15 at Sea -----	23
Appendix O:	C Class British Submarines -----	23
Appendix P:	Location of UC-65 Wreckage, English Channel -----	24

3.0 Introduction

The steamship SS Snowdon Range was chosen as:

- it covered a period of sea history covering WW1.
- it was a similar ship and time to other ships I had researched from the MADU Wreck list.
- I live overseas online information would be my priority research tool and similar to my previous research a ship from this period should be reasonably well documented online.

The following topics form the basis of the research:

- What were the vessel's specifications?
- What historical information is available relating to the vessel?
- Has any salvage, etc. been carried out?
- Have there been any previous reports produced relating to the vessel?

4.0 Background

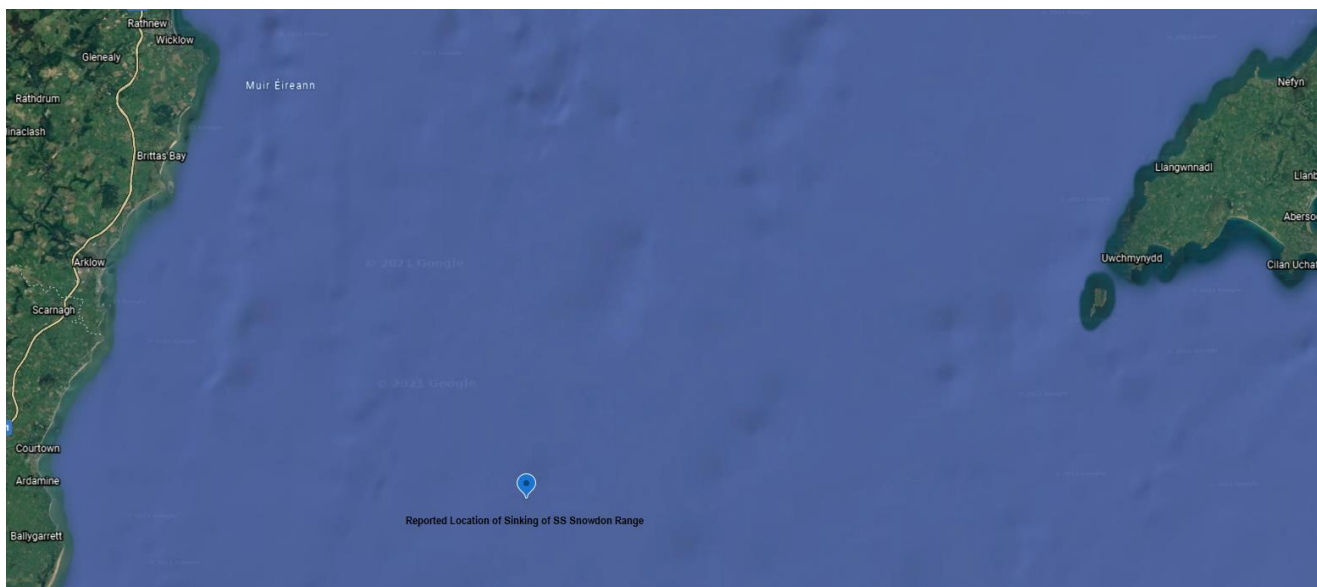
Prior to starting this research the only known data available to me was from the MADU Master Wrecksite Database Listing (Table 1) supplied by Mr Ian Cundy.

Table 1: Extract from MADU Master Wrecksite Database

MADU Ref. No.	Date Wrecked	Name	Location 1	Location 2	Details	Vessel Type	Matls	Ref.
	28/03/1917	Snowdon Range	Off Bardsey Island	25 miles WSW		Stm	Stl	RHIW

On March 28 1917, the SS Snowdon Range sailing from Philadelphia to Liverpool with a cargo of gunpowder was torpedoed by the German U-boat UC-65 approximately 25 miles WSW of Bardsey Island. The crew was offloaded and after provisions and brass were removed by the U-boat crew the SS Snowdon Range was scuttled with explosives.

Fig 1: Reported Location of the Sinking of the SS Snowdon Range



5.0 Research Methodology

Computer System

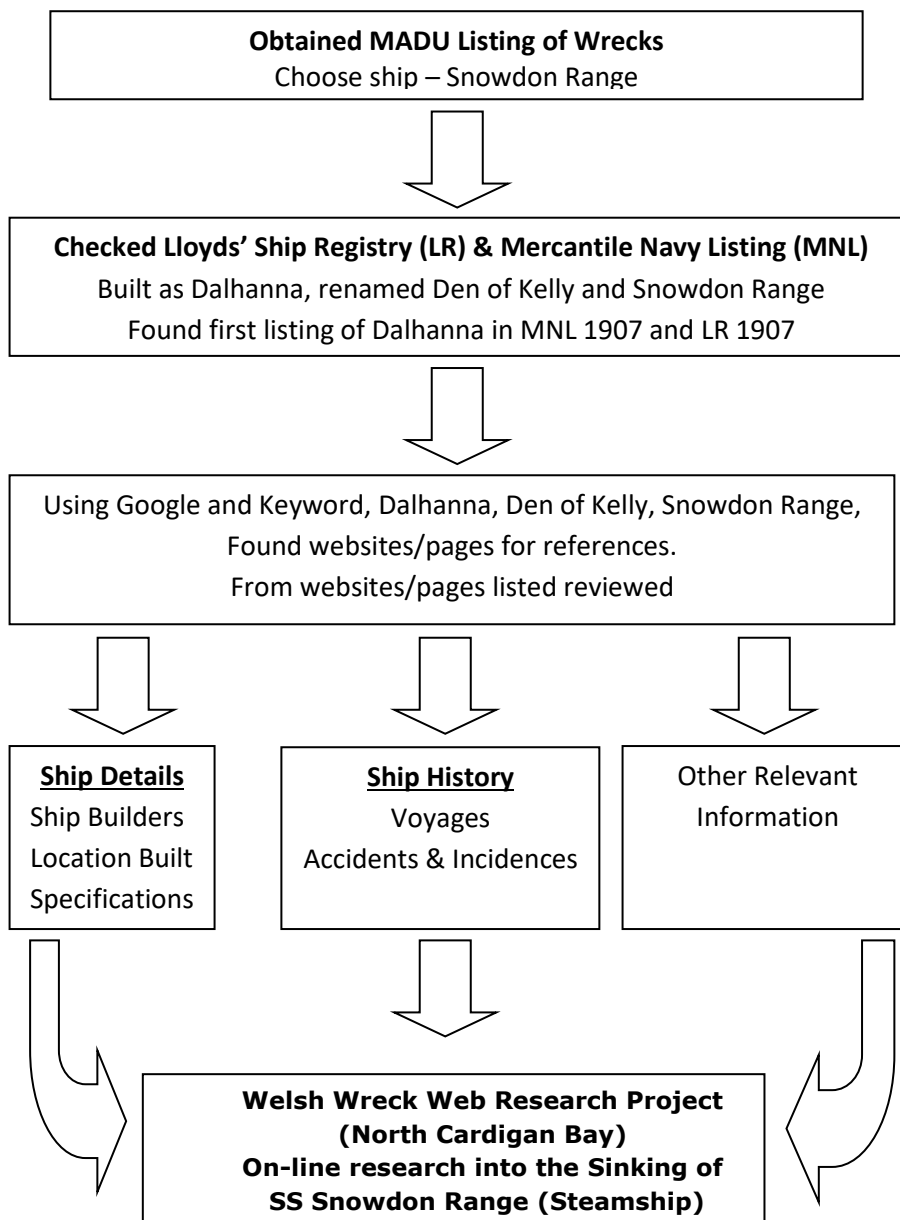
Acer Desktop 64 bit OS; 8 GB Memory, wireless connection.

Windows 10Pro

Microsoft Office 2007

Search engines used: Google Chrome

Methodology



See Section 9 for list of websites viewed

6.0 Results

Table 2: SS Dalhanna (Steamship) Specification and History

Vessel	Name/s	SS Dalhanna (renamed Den of Kelly Mar 1915, Snowdon Range Oct 1915)		
	Type	Steamship General Cargo		
Built	Date	Laid Down: N/A		
		Launched: 03/09/1906		
		Delivered: 09/1906		
Builder	Scotts' Shipbuilding & Engineering Co. Ltd.			
	Greenock. Yard#: 403			
Construction	Materials	Steel		
	Decks	2		
	Bulkheads	6		
	Others	p/deck 44ft, b/deck 121ft, f/castle 42ft, 1x4.7in Stern gun; classed Lloyd's 100A1		
Propulsion	Type	Steam		
		Single screw		
Engine	Details	T3cyl, 11 knots		
		26.5, 44, 72 x 48in		
		H.P: 441 nhp; 2500 ihp 180lb		
		Scotts' Shipbuilding & Engineering Co. Ltd., Greenock		
Boilers	2 boiler, 6cf GS 134 HS 6014			
Drive	Type	Propeller		
	Number	1		
Dimensions	Length	390 ft	0 ins	m
	Beam	52 ft	2 ins	m
	Draught	26 ft	4 ins	m
Tonnage	Gross	4662 grt		
	Net	2999 nrt		
	Deadweight	7500 dwt		
Owner	First	Steamship Dalhanna Ltd. J.M. Campbell & Son, Glasgow		
	Second	Barrie Shipping Co. Ltd - Charles Barrie & Sons, Dundee		
	Third	Neptune S.N. Ltd. - Furness, Withy & Co. Ltd., London		
Registry	Port	Glasgow		
	Flag	GBR		
	Number	124138		
	Code	H.J.F.V.		
History	Routes	U.K, India, Sri Lanka, South Africa, east coast of North America, west and east coasts of South America South America, S.E Asia, Korea, Japan, Australia, N.Z.		
	Cargo	Coal, ores, grains, wool, jute, general cargos		
Final Voyage	From	Philadelphia PA		
	To	Liverpool		
	Captain	E. Twindle?		
	Crew	43		
	Passengers	N/A		
	Cargo	Gunpowder and general cargo		
	Date	28/03/1917		
	Location	52.36N, 05.34W, 25 WSW of Bardsey Island		
	Cause	Torpedoed without warning by UC-65		
	Loss of life	4		
	Outcome	Sunk		

7.0 Analysis

- The steamship SS Dalhanna was built and launched (Appendix A, B) at Scotts' Shipbuilding & Engineering Co. Ltd. Greenock in October 1906 for Steamship Dalhanna Ltd. J.M. Campbell & Son, Glasgow (Appendix C, D, E).
- SS Dalhanna sailed between the U.K, India, Sri Lanka, South Africa, east coast of North America, west and east coasts of South America, S.E Asia, Korea, Japan, Australia and New Zealand. Cargoes carried were probably coal, ores, grains, wool, jute.
- March 1915, the SS Dalhanna was bought by Barrie Shipping Co. Ltd - Charles Barrie & Sons, Dundee and renamed the Den of Kelly (Appendix G).
- SS Den of Kelly sailed between the U.K, India, Sri Lanka and east coast of North America. Cargoes carried were probably coal, grains, jute.
- October 1915, the SS Den of Kelly was bought by Neptune S.N. Ltd. - Furness, Withy & Co. Ltd., London and renamed SS Snowdon Range (Appendix H).
- SS Snowdon Range sailed between Glasgow and Philadelphia on a fortnightly schedule (Appendix J).
- Mar 28 1917, at 8:35am 25 miles WSW of Bardsey Island, the SS Snowdon Range sailing from Philadelphia to Liverpool in calm and hazy conditions with a cargo of food supplies and gunpowder observed a torpedo track heading towards her on the port side. The helm was put hard to port but the SS Snowdon Range was struck at engine level killing 3 men in the engine room. Another crew member who jumped overboard drowned. A distress call was put out and the crew abandoned the SS Snowdon Range. The U-boat UC-65 (Appendix K) surfaced and the SS Snowdon Range looted. Scuttling charges were rigged and fired and the UC-65 continued to shell the SS Snowdon Range until she sank (Appendix L, M).
- Mar 28 1917, at 6:00pm the crew who has abandoned in 3 lifeboats were picked up by the SS Somerset Coast and a R.N patrol vessel and landed at Holyhead.

From newspapers the SS Dalhanna, Den of Kelly and Snowdon Range was recorded:

1906

Sep 03: Launched at Glasgow.
 Oct 02-04: Sailed Greenock for Barry.
 Oct 06: Steamship Dalhanna Company created. Allotted H.J.F.V.
 Oct 15-Nov 11: Sailed Barry for Colombo.
 Oct 26: arr Port Said.
 Nov 29: Arrived Calcutta from Colombo.
 Dec 13: Sailed Calcutta for Bombay.

1907

Jan 25: Sailed Bombay for U.K continent.
 Feb 9: arr Suez.
 Mar 09-12: Sailed Antwerp for Barry.
 Mar 25-Apr 23: Sailed Barry for Colombo.
 Apr 7/8: arr/dep Port Said.
 May 09: Arrived Bombay from Colombo.
 May 19-Jun 28: Sailed Bombay for Baltimore MD with cargo of manganese.
 Jun 02: arr Suez. While transiting Suez Canal the Dalhanne was fouled by the steamer Manipur from Calcutta to London. The Dalhanne sustained damage to starboard bow.
 Jun 17: arr/dep St Michael's Azores for coal.
 Jul 31-Aug 09: Sailed New York for Chile.
 Sep 07: Arrived Callao Peru.
 Oct 03: Sail Callao Peru for Tacoma WA.

Nov 08: Arrived Callao Peru from Valparaiso Chile.

1908

Jan 07-Feb 22: Sailed Callao Peru for New York via Montevideo, St Lucia, Baltimore MD.
 Apr 08-May 16: Sailed New York for Durban.
 Apr 22/23: arr/dep St Vincent Cape Verde.
 May 18-Jun 06: Sailed Durban for Padang West Sumatra.
 Jul 16: Arrived Makassar (Sulawesi) from Semarang and Banyuwangi (East Java).
 Jul 30-Sep 30: Depart Makassar (Sulawesi) for Philadelphia.
 Sep 2/3: arr/dep Suez/Port Said.
 Sep 11/13; arr/dep Oran Algeria.
 Oct 25: Repairs required after survey (Appendix F).
 Nov 18: Sail Philadelphia PA for Norfolk VA.
 Dec 18-28: Sailed Norfolk VA for Talcahuano Chile.

1909

Jan 30-Apr 06: Sailed Talcahuano Chile for Wilmington NC via Montevideo and St Lucia.
 Apr 07: Sailed Wilmington NC for New York.
 April 10: Dalhanna and King George anchored off Tompkinsville NY dragged a foul of each other. The Dalhanna suffered damage on port side aft damaged.
 Apr 22-Jun 24: Sailed New York for Adelaide SA.
 Jun 29: Grounded in the Adelaide river under Government pilot. Evidently some machinery damage. However only engine broken down, no damage.
 July 16-21: Sailed Melbourne VC for Brisbane QLD.
 July 24: Sailed Brisbane QLD for Sydney NSW.
 Aug 04: Arrived Bluff NZ from Sydney NSW.
 Aug 10-Oct 06: Sailed Bluff NZ for U.K with 49054 sacks of oats.
 Oct 13: Arrived Newport Wales from Bristol.
 Oct 21-Nov 19: Sailed Newport Wales for Bahia Blanca Argentina.

1910

Jan 19-Feb 20: Sailed Bahia Blanca Argentina for London.
 Feb 12: passed St Vincent Cape Verde.
 Feb 25-28: Sailed Gravesend for Cardiff.
 Mar 10-31: Sailed Barry Wales for Rio Janeiro.
 Apr 15: Sailed Rio Janeiro for New York.
 May 27-Jul 28: Sailed New York for Fremantle WA via Norfolk VA and Durban.
 Jul 7: dep Durban.
 Jul 07: Sailed Durban for Fremantle WA.
 Aug 10: Arrived Adelaide SA from Fremantle WA.
 Aug 11: When entering dock at Port Adelaide Dalhanna was in collision with steamer Paringa and sustained damage to her port bulwark.
 Aug 26: Arrived Brisbane.
 Sep 13: Arrive Port Pirie SA from Brisbane QLD.
 Sep 30: Sailed Wallaroo SA for Fremantle WA.
 Oct 12-Dec 31: Sailed Fremantle WA for Barry Wales.
 Nov 03: arr/dep Durban.
 Nov 28: arr Las Palmas Canary Islands.
 Dec 06: arr St Nazaire France.
 Dec 30: passed west of Lizard Cornwall.

1911

Jan 28: Arrived Philadelphia PA from Barry Wales.
 Apr 11: Arrived Durban from Philadelphia PA.
 May 16: Arrived Chemulpo South Korea from Durban.
 Jun 10: Arrived Karatsu Japan.
 Jun 27: Arrived Singapore from Kuaratsu Japan.
 Sep 14-20: Sailed Suez for Aden.

Oct 13: Arrived Colombo.
 Nov 24: Sailed Colombo for Hull.
 Dec 19: dep Port Said.

1912

Jan 07: Arrived Hull from Calcutta via Colombo.
 Jan 27-30: Sailed Hull for Glasgow, light.
 Jan 29: passed Dunnet Head.
 Mar 02: Sailed Glasgow for Kobe Japan.
 Mar 17: arr Port Said.
 Apr 11: arr Shanghai.
 Apr 18: dep Hong Kong for Japan.
 Jul 05-24: Sailed Suez for Liverpool from Batavia Java.
 Aug 02: Sailed Newport Wales for Karachi.
 Aug 29: dep Aden.
 Sep 17-Oct 15: Sailed Karachi for Hull with 71500 bags of wheat.
 Sep 29: dep Suez.
 Oct 16: Apprentice onboard fell off the funnel while painting. Require two stitches to an eye wound.
 Oct 29-Dec 09 Sailed Cardiff for Colombo.

1913

Apr 10: Arrived Port Said from Bangkok.
 Jun 10: Sailed Newport Wales for Bahia Blanca Argentina.
 Aug 01: Sailed Buenos Aires for Rotterdam.
 Aug 26: arr Las Palmas.
 Sep 09: Arrived Cardiff from Rotterdam in ballast.
 Sep 16: Sailed Cardiff for Rio Janerio, coal.
 Oct 18-Nov 07: Sailed Rio Janerio for Norfolk VA.
 Dec 05: Arrived Rio Janerio from Norfolk VA.

1914

Jan 11-30: Sailed Durban for Adelaide SA.
 Feb 16-May 03: Sailed Wallaroo SA for Hull via Durban Las Palmas.
 May 18-Jun 03: Sailed Newcastle for New York.
 Jul 30: Arrived Cape Town from New York.
 Dec 20: Sailed Bahia Blanca Argentina for London.

1915

Feb 07: Arrived London from Bahia Blanca Argentina.
 Mar 16: Bought and renamed.
 Apr 13-26: Arrived Aden from Bagnoli Italy for Rangoon (Den of Kelly).
 Jul 11: Arrived Table Bay from Calcutta for West Indies.
 Sep 18: Sailed New Orleans LA for Gibraltar.
 Oct 15: Sold and renamed (Appendix I).
 Dec 20: Arrived Glasgow from Philadelphia PA, general cargo (Snowdon Range).
 Dec 23: Court case in Glasgow over crew members disobeying orders (Appendix I).

1916

Feb 16: Arrived Glasgow from Philadelphia, general cargo.
 Apr 16: Sailed Glasgow for Philadelphia (Appendix J).
 Jun 03: Sailed Glasgow for Philadelphia.
 Jul 26: Sailed Glasgow for Philadelphia.
 Sep 09: Sailed Glasgow for Philadelphia.
 Oct 28: Sailed Glasgow for Philadelphia.

1917

Mar 28: Sunk with 6700 tons of grain, fruit, oat flakes and gunpowder.

Table 3: UC-65 (U-boat) Specification and History

Vessel	Name/s	UC-65
	Type	UC 11 submarine
Built	Date	Ordered: Jan 12 th 1916
		Launched: July 8 th 1916
		Delivered: Nov 7 th 1916
		Cost: N/A
	Material	Steel
	Builder	Blohm & Voss, Hamburg; Yard #281
	Owner	Imperial German Navy – Kaiserliche Marine
Dimensions	Length	50.35 m
	Beam	5.22 m
	Draught	3.63 m
Tonnage	Gross	427t (surface); 508t (submerged)
Propulsion	Type	2 x propeller shafts
Engine	Details	2x6 cyl, 4-stroke diesel, 600PS 400 kW; 590 shp) 2 Siemens-Schuckert electric motors, 620 PS 460 kW; 610 shp HP: 500
	Speed	12 knts (surface); 7.4 knts (submerged)
	Range	10,420 nat miles at 7 knts surface; 52 nat miles at 4 knts submerged
	Depth	50m
Armaments		6 × 100 cm (39.4 in) mine tubes 18 × UC 200 mines 3 × 50 cm (19.7 in) torpedo tubes (2 bow/external; one stern) 7 × torpedoes 1 × 8.8 cm (3.5 in) Uk L/30 deck gun
Operations	Captains	Kptlt. Otto Steinbrinck, 10 November 1916 – 31 July 1917 Kptlt. Max Viebeg, 1 August – 3 September 1917 Kptlt. Claus Lafrenz, 4 September – 3 November 1917
	Crew	27
	Patrols	11
	Sinkings/ Damaged	105 merchant ships sunk 116,218 grt 11 merchant ships damaged 64,712 grt 1 warship sunk 11,000 grt 1 warship damaged 850 grt
Wrecking	Date	3/11/1917
	Location	50°31'N 00°27'E.
	Cause	Torpedoed by HM SubC15
	Loss of life	22 dead and 5 survivors
	Outcome	Wreck. UC-65 lies at a maximum depth of 50m

- On 1 February 1917 Germany declared a renewal of 'unrestricted submarine warfare' in a last ferocious attempt to force an end to the First World War.
- Almost immediately, major losses of merchant ships occurred in Welsh waters. Thirteen ships were sunk off Bardsey Island and the Pembrokeshire coast in that month alone – all by the U-boat, UC-65, captained by Otto Steinbrinck, one of the most successful German U-boat commanders of the war.
- UC-65 also patrolled in the North Sea, and coast of France. On Nov 3 1917, at 16h45, HM Sub C-15 (Appendix N, O) fired two torpedoes and obtained one hit on the stern of UC-65, which sank immediately (Appendix P). Only the five men on the bridge (incl. Commander Lafrenz) survived, the rest of the crew, 22 in total, were killed.

Table 4: C-15 (Submarine) Specification and History

Vessel	Name/s	HMS C15 (Appendix C, D)
	Type	C-class submarine
Built	Date	Laid Down: Dec 7 th 1906
		Launched: Jan 21 th 1908
		Delivered: Apr 1 st 1908
		Cost: N/A
	Material	Steel
	Builder	Vickers, Barrow Cumbria
	Owner	British Royal Navy
Dimensions	Length	142 ft 2.5in
	Beam	13 ft 7in
	Draught	11 ft 2in
Tonnage	Gross	287t (surface); 316t (submerged)
Propulsion	Type	1 x electric motor
Engine	Details	1x16 cyl Vickers petrol engine 600 bhp, 450kW 300hp, 220 kW electric
	Speed	12 knts (surface); 7 knts (submerged)
	Range	910 nat miles at 12 knts surface; 52 nat miles at 4 knts submerged
	Depth	100 ft
	Crew	2 x officers, 14 crew
Armaments		2 × 18 in (450 mm) bow torpedo tubes 800 yards @ 26.5 knots, 118 lbs. wet gun-cotton warhead 2 reloads
	Outcome	Scrapped Feb 1922

8.0 Conclusions & Recommendations

The project took approximately 3 working days with 2 day of that time spent on on-line research.

Having read the report, sufficient information has been collated to compile a comprehensive history of the steamship SS Snowdon Range.

The SS Snowdon Range (built as SS Dalhanna and also renamed Den of Kelly) sailed between the U.K., India, Sri Lanka, S.E Asia, Australia, New Zealand, Japan, Korea, South Africa, east coast of North America, west and east coasts of South America.

Many different WebPages were viewed ranging from large organisations e.g. Lloyd's Registry Listings to smaller WebPages such as local history or people with a given interest in a subject. The quantity and quality of the WebPages appeared depended on the targeted audiences and the amount of work undertaken. Some of the historical and interest in a subject WebPages were extremely useful. Newspaper archives were also very helpful in giving an overall picture of the operation of the ship and filling in information gaps.

Much of the data collated between websites checked out with some discrepancies observed.

A few WebPages viewed led to pay to view pages. However in most cases the information was obtained from other sources.

From the research conducted, setting a goal and how to reach that goal should be mapped out first. Careful use of specific words in search engines is very important. Due to the name a more specific search through archived newspapers was made using specific newspapers to view e.g. Lloyd's List. This vastly reduced the number of articles but keep the search focused.

9.0 References

9.1 Online WebPages

The following websites and pages have been used in the compilation of this report:

<https://www.britishnewspaperarchive.co.uk/>

Keyword: Dalhanna, and Den of Kelly, Snowdon Range

<https://www.crewlist.org.uk/data/vesselsalpha>

<https://www.crewlist.org.uk/data/viewimages?data/viewimages>

http://www.clydeships.co.uk/view.php?official_number=&imo=&builder=&builder_eng=&year_built=&launch_after=&launch_before=&role=&propulsion=&category=&owner=&port=&flag=&disposal=&lost=&ref=16259&vessel=DALHANNA

<https://www.google.co.uk/>

<https://hec.lrfoundation.org.uk/archive-library/casualty-returns>

<https://hec.lrfoundation.org.uk/archive-library/lloyds-register-of-ships-online>

<https://newspapers.library.wales/>

<https://rcahmw.gov.uk/one-hundred-years-ago-today-2/>

<http://www.rhiw.com/>

<https://uboat.net/wwi/>

https://uboat.net/wwi/ships_hit/5625.html

<https://uboat.net/wwi/types/?type=U+63>

<https://uboatproject.wales/>

<https://uboatproject.wales/test-esri-map/>

https://en.wikipedia.org/wiki/HMS_C15

<https://www.wrecksite.eu/wreck.aspx?165003>

https://en.wikipedia.org/wiki/SM_UC-65

9.2 Personal Correspondences

I would like to thank Mr Ian Cundy for supplying the initial information and other information with regards to the research project.

Appendices:

Appendix A: Launch Announcement Sept 03 1906, SS Dalhanna

LAUNCH OF LARGE STEAMER AT GREENOCK TO-DAY.

About noon to-day Scotts' Shipbuilding and Engineering Company launched from their dockyard the steel screw steamer "Dalhanna," which they have built to the order of Messrs J. M. Campbell & Sons, shipowners, Glasgow. The naming ceremony was gracefully performed by Mrs John Campbell, Hughenden House, Irvine. The new vessel, which took the water in fine style, is of 4,600 tons gross, with a deadweight carrying capacity of 7,500 tons, and is sister ship to the Dalblair, launched by Scotts' Company for the same owners in June last. The Dalhanna was towed to the firm's fitting-out basin, where her engines and machinery will be put on board by the builders. Among those present were Mr John R. Campbell, Mr R. L. Scott, Mr C. Munn, Mr and Mrs J. Leckie, Walsall; Miss Wightman, etc.

Appendix B: Creation of Steamship Dalhanna Company Oct 03 1906

NEW SCOTTISH COMPANIES.

Six new joint stock companies were registered in Scotland this week, with a total capital of £179,500, making 251 companies, with an aggregate capital of £8,772,292, registered since the beginning of the year. The following are this week's companies:—

The Straits and Borneo Syndicate, 166 St Vincent Street, Glasgow, to acquire lands, estates, plantations, and concessions, and to carry on the business of planters, cultivators, and dealers in rubber, gutta percha, coconut, and other products. Capital, £5000, in 5000 shares of £1 each. Private company.

The Steamship Dalhanna Company, 154 St Vincent Street, Glasgow, to carry on business of shipowners. Capital, £20,000, in 200 shares of £100 each. Private company.

Appendix C: Appropriation Book 1907, SS Dalhanna

Table with columns: Official Number, Name of Ship, Tonnage, Whether Steam or Sailing, Port of Registry, Date of Registry. Lists ships like Sherries, Dalhanna, Crown of Galicia, Bastalia, Butriana, Argo, Letter, Kumeria, Scottish Monarch, Tertius, and Emilius.

Appendix D: Mercantile Navy Listing 1907, SS Dalhanna

Table with columns: Official No., Name of Ship, International Code Signal, Port and Year of Registry, Where Built, When Built, Dimensions (Length, Breadth, Depth), Registered Tonnage, Horse Power, and Owner/Manager. Includes ships like Dalegarth, Dalhanna, Dalhousie, Dallington, Dalmally, Dalmatia, and Dalmatian.

Appendix E: Lloyd's Register 1907, SS Dalhanna

Lloyd's Register Steamers table for 1906-07. Columns include Steamer Name, Material, Rig, &c., Particulars of Classification, Built, Owners, Dimensions, Port of Registry, Engines, and Moulded depth. Lists ships like Daleby, Dalegarth, Dalhanna, and Dalhousie.

Appendix F: Repairs required after survey, Oct 1908

FOR FRANCE.

DALHANNA (s).—*London, Oct. 26.*—The Salvage Association have received the following telegram from their surveyor, dated Philadelphia, Oct. 25, re **Dalhanna** (s):—Surveyed. Must renew one bottom shell plate abutting stern frame. To accomplish same must remove other plates and cement. Must renew steering worm gear, lift rudder, draw tailshaft, clean examine tanks, renew mooring bitt, fair bilge keel, paint bottom.

Appendix G: Reported change of name to SS Den of Kelly, Mar 1915

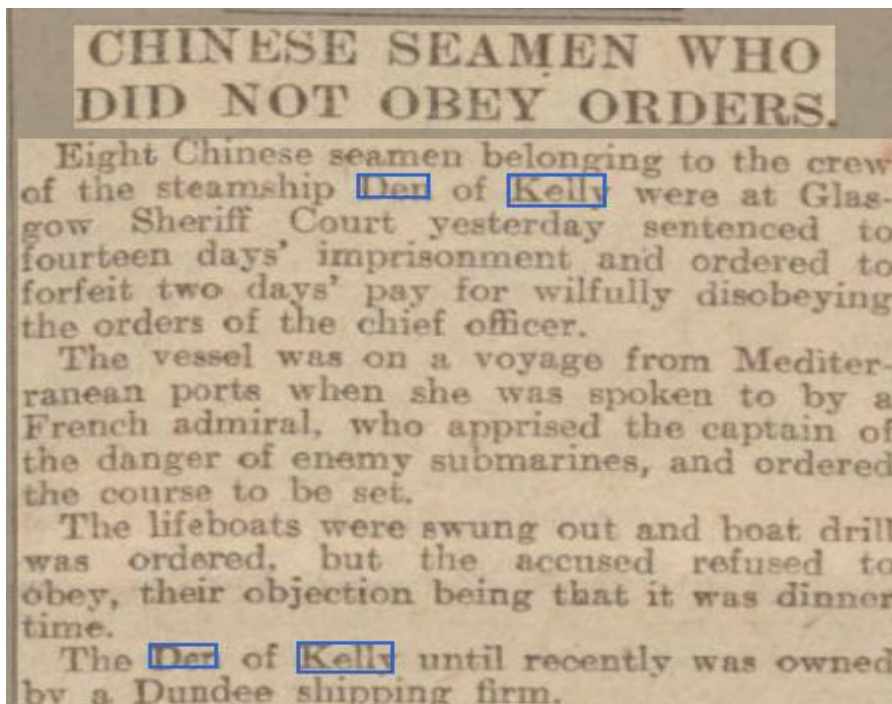
Steamer Purchased by Dundee Company.
 The steel s.s. Dalhanna, 4662 tons gross, 2999 tons net, carries about 7700 tons deadweight, built and engined by Scott's Shipbuilding and Engineering Company, Greenock, in 1906, and owned by the Steamship Dalhanna Co., Ltd., Messrs J. M. Campbell, Anderson, Glasgow, is reported sold to Messrs Charles Barrie & Son, Dundee, for about £59,000, and renamed the **Den** of **Kelly**.

Appendix H: Reported change of name to SS Snowdon Range, Oct 1915

SOLD.

Four steamers, the **Den** of Ruthven, the **Den** of Glamis, the **Den** of Crombie, and the **Den** of **Kelly**, belonging to the Barrie Shipping Company (Messrs C. Barrie & Sons), Dundee, have been sold to Furness, Withy, & Co., Limited, Liverpool. The first two vessels together realised about £200,000, while the Den of Crombie was sold at about £100,000. All are steel screw steamers. The **Den** of Crombie and the **Den** of Ruthven were both built by Messrs C. Connell & Co., Glasgow, the **Den** of **Kelly** by Scott's Shipbuilding and Engineering Company, Greenock, and the **Den** of Glamis by Messrs Napier & Miller, Glasgow.

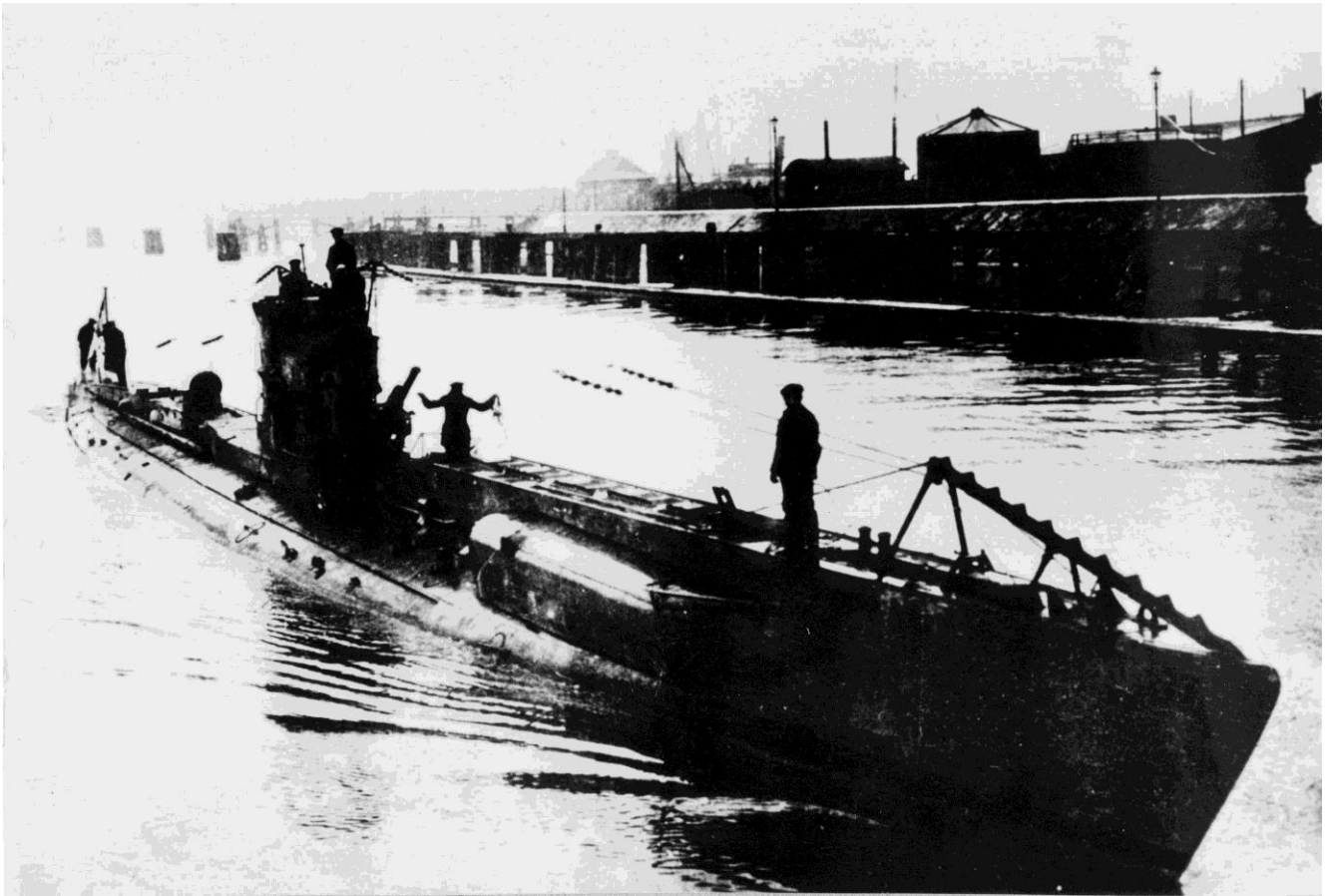
Appendix I: Court Case against crew members of Den of Kelly Dec 1915



Appendix J: Advert for Fortnightly service Glasgow to Philadelphia



Appendix K: UC Class Mine laying U-Boat 1917



Appendix L: Reported Sinking of SS Snowdon Range, Mar 28 1917

THE U BOATS' "DOINGS."
A GERMAN RECORD.

The London "Daily Express" reproduces the following exact translation from the German newspapers, of the official German Admiralty report on U boat "successes."

April 12.—The following particulars are given, supplementary to the U boat successes published on April 6. Among the vessels sunk are:—The armed English steamers Snowdon Range (4,662 tons), with 7,500 tons of grain, fruit, and oat flakes; Wyenwood (1,984 tons), with 2,900 tons of coal for the English Fleet; an unknown steamer of 1,800 tons; the English steamer Fairearn (592 tons), with coal; Ennistown (700 tons); Ardenwen (3,798 tons), with 5,000 tons of sugar; Ardglass (778 tons), with steel plates; Cannizoro (6,113 tons); the English steamer Somme (1,800 tons); Holgate (2,604 tons), with iron ore (the captain was made prisoner); a passenger steamer of the Megantic type (14,878 tons). The English sailing ships Home, with coals; Brandon, with steel plates; Eastern Belle, with pitch. The English fishing vessels Prince of Wales, Gallatia, Moul-

Appendix M: Lloyd's Casualty Listing 1917, SS Snowdon Range

LLOYD'S REGISTER OF SHIPPING.

RETURNS OF VESSELS TOTALLY LOST, CONDEMNED, &c.

1ST JANUARY TO 31ST MARCH, 1917.

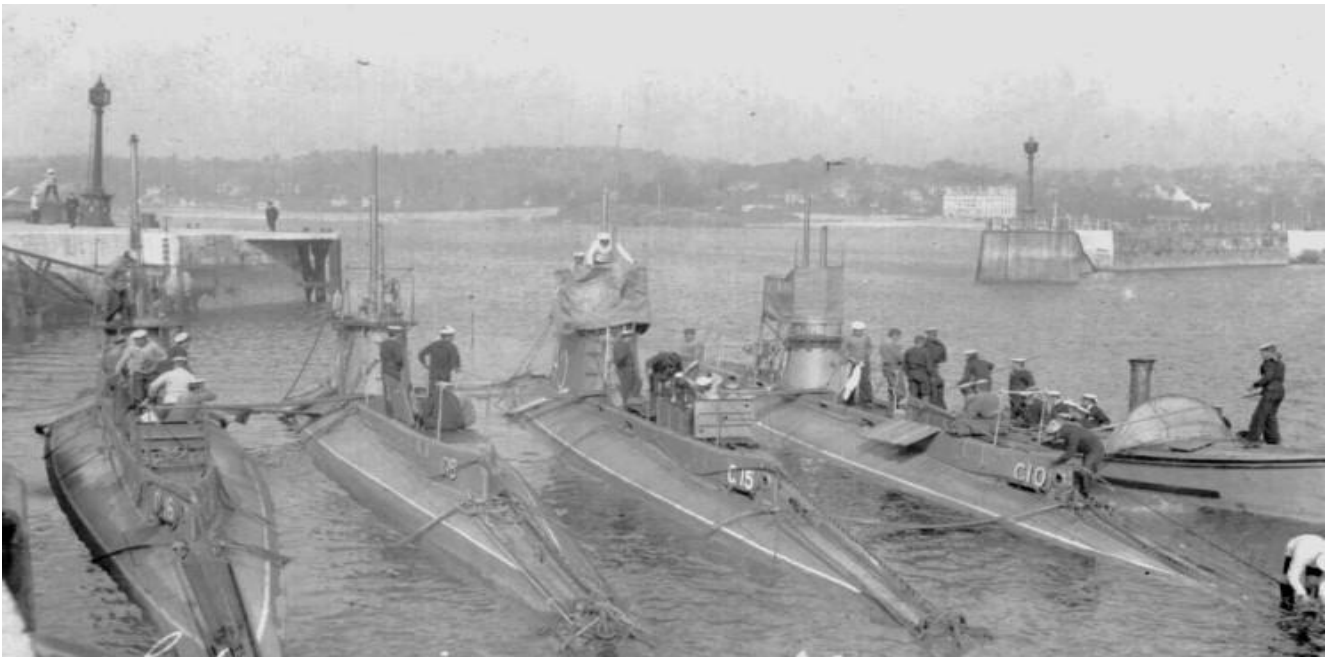
(i.) War Losses—*continued.*

No. in Reg. Book. 1916-17.	Vessel's Name.	Tons.		Nation- ality.	Descrip- tion.	No. in Reg. Book. 1916-17.	Vessel's Name.	Tons.		Nation- ality.	Descrip- tion.
		Net.	Gross.					Net.	Gross.		
921	Meldon	1572	2514	U.K.	Stl. Sc.	585	Rio Sorocaba	2735	4307	U.K.	Stl. Sc.
944	Memnon.....	2042	3203	U.K.	Stl. Sc.	581	River Forth.....	2875	4421	U.K.	Stl. Sc.
950	Mendi.....	2639	4230	U.K.	Stl. Sc.	736	Romeo	47	114	U.K.	I. Sc.
58 Sup.	Minieh	2381	3806	U.K.	Stl. Sc.	744	Romsdalen	1632	2548	U.K.	Stl. Sc.
1345	Mohacsfield	2345	3678	U.K.	Stl. Sc.	784	Rosalie	2682	4237	U.K.	Stl. Sc.
1556	Moulmein	59	151	U.K.	I. Sc.	814	Rose Lea	1817	2830	U.K.	Stl. Sc.
1610	Munificent	2004	3270	U.K.	Stl. Sc.	855	Rosslyn	41	113	U.K.	I. Sc.
19	Naamah	114	267	U.K.	Stl. Sc.	876	Rotorua.....	7100	11140	U.K.	Stl. Trp. Sc.
56	Nailsea Court.....	2152	3295	U.K.	Stl. Sc.	939	Ruby	88	226	U.K.	I. Sc.
114	Narragansett.....	5776	9196	U.K.	Stl. Sc.	972	Rupert	47	114	U.K.	I. Sc.
164	Navenby	69	167	U.K.	I. Sc.	54	Sagamore.....	3305	5197	U.K.	Stl. Sc.
175	Neath.....	4696	5548	U.K.	Stl. Aux. Sc.	276	Sallagh	113	325	U.K.	Stl. Sc.
289	Netherby Hall	2855	4461	U.K.	Stl. Sc.	191	Saint Ninian	1938	3026	U.K.	Stl. Sc.
292	Netherlee	2744	4227	U.K.	Stl. Sc.	221	Saint Theodore	3175	4992	U.K.	Stl. Sc.
305	Neuquen	2286	3583	U.K.	Stl. Sc.	668	Saxon Briton	832	1337	U.K.	I. Sc.
321	New Comet.....	71	177	U.K.	Stl. Sc.	676	Saxonian	2978	4855	U.K.	Stl. Sc.
376	Newstead	1827	2836	U.K.	Stl. Sc.	775	Sea Gull	54	144	U.K.	Stl. Sc.
35 Sup.	Norma Pratt	2838	4416	U.K.	Stl. Sc.	1021	Shamrock.....	68	173	U.K.	I. Sc.
770	Norwegian	4056	6327	U.K.	Stl. Sc.	1014	Shakespeare	82	210	U.K.	Stl. Sc.
754	Northwaite	2336	3626	U.K.	Stl. Sc.	1387	Sisters Melville	115	260	U.K.	Stl. Sc.
15	Oakwell.....	129	248	U.K.	I. Sc.	1528	Snowdon Range.....	2999	4662	U.K.	Stl. Sc.
180	Okement	2666	4349	U.K.	Stl. Sc.	1603	Somme	1091	1828	U.K.	Stl. Sc.
197	Olivia.....	111	242	U.K.	I. Sc.	1846	Stanley	2482	3987	U.K.	Stl. Sc.
483	Ostrich	62	148	U.K.	I. Sc.	1877	Star of the Sea	76	197	U.K.	Stl. Sc.

Appendix N: C-15 at Sea



Appendix O: C Class British Submarines



From left to right; HMS C-16, HMS C-18, HMS C-15 and HMS C-10 at Torquay, England.

Appendix P: Location of UC-65 Wreckage, English Channel

